

Adams County Forest Buffer Summary

100 ft. Width

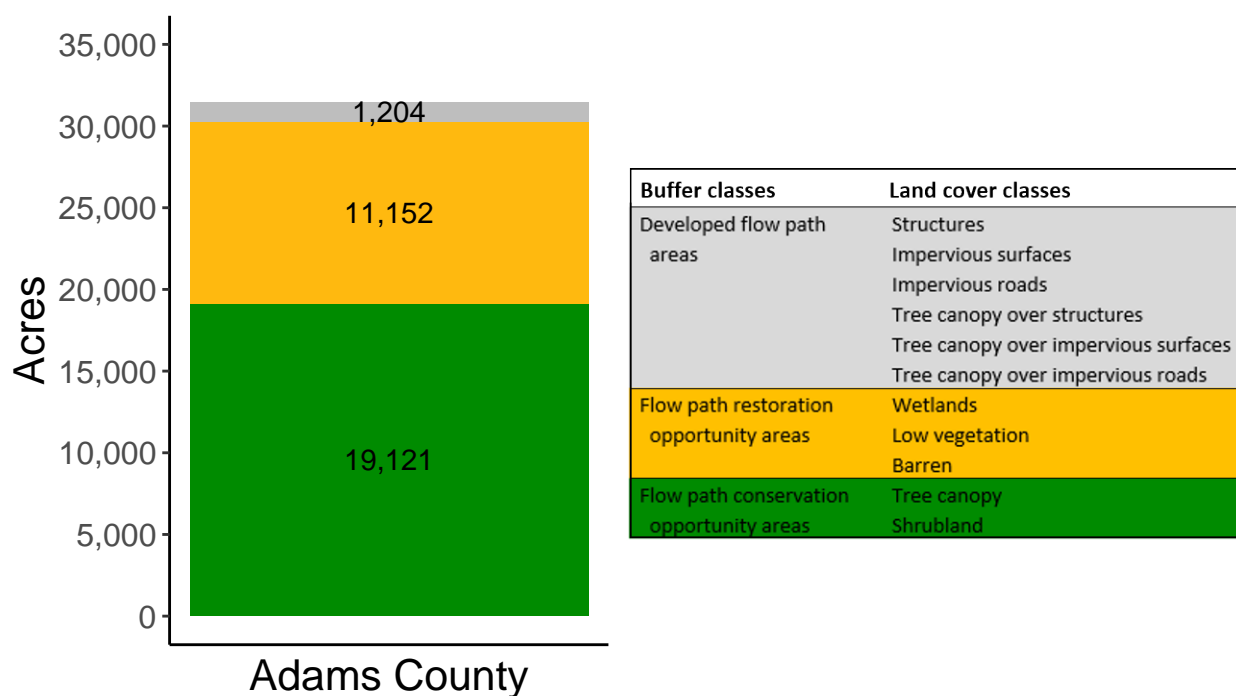
Created by: Chesapeake Conservancy, February 2019

Data Description

The buffer analysis is based on two Geospatial Information Systems (GIS) datasets created by Chesapeake Conservancy and partners. The enhanced flow path water network dataset was derived from 2006 & 2008 PAMAP Statewide digital elevation models (DEMs), developed from Lidar data. Channel heads were assigned where upslope drainage accumulation reached 60 acres. Flow paths were widened based on US Geological Survey regional curves and enhanced with high-resolution land cover. The high-resolution land cover dataset was derived from 2013 National Agriculture Inventory Program imagery. Both datasets have a spatial resolution of 1 meter. Pixels from the high-resolution land cover dataset within 35 ft. and 100 ft. distances of the enhanced flow path water network were considered in the buffer analysis. For more information and to download datasets, go to www.ChesapeakeConservancy.org and search for “data downloader.”

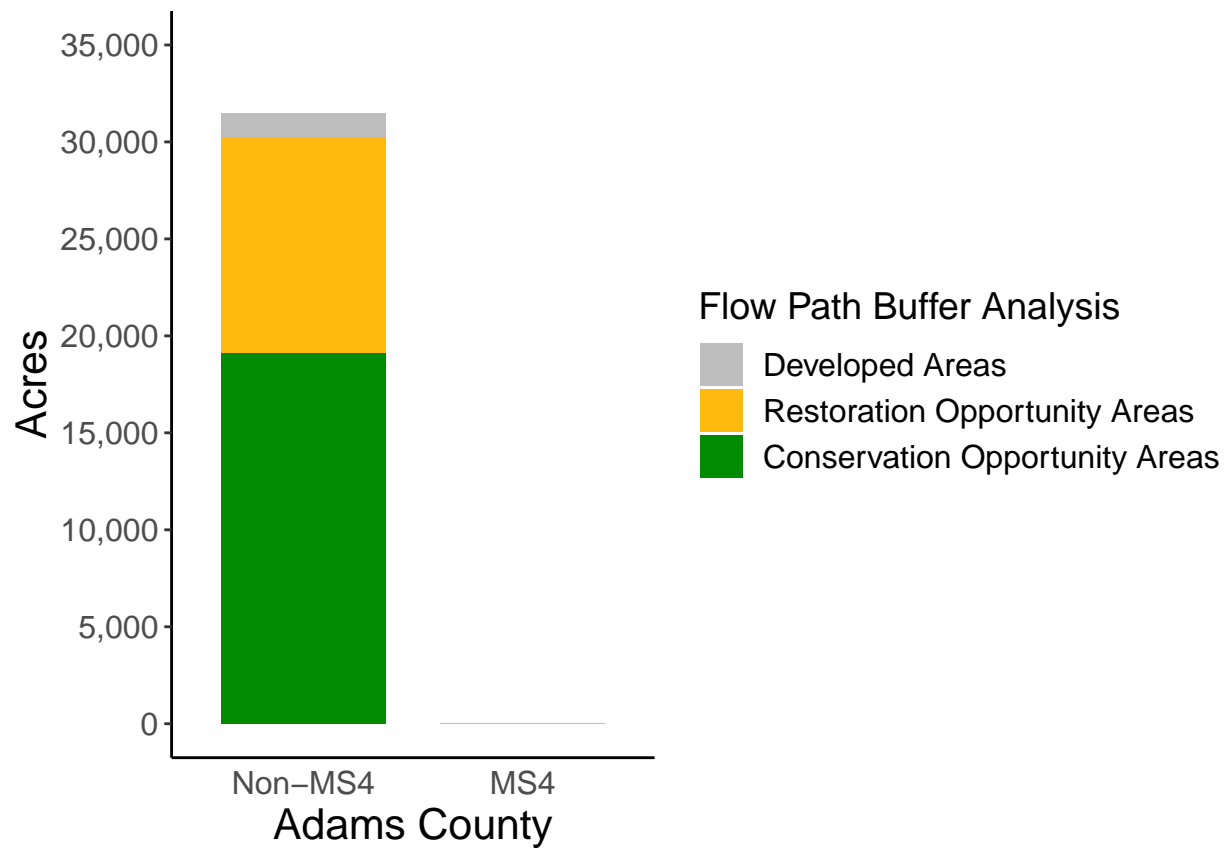
County Summary

Adams County contains a total of 11,152 acres of flow path restoration opportunity area, and has 60.75% forest buffer coverage. Adams County has complete buffer data coverage.



Municipal Separate Storm Sewer System (MS4) Regulated Municipality Summary

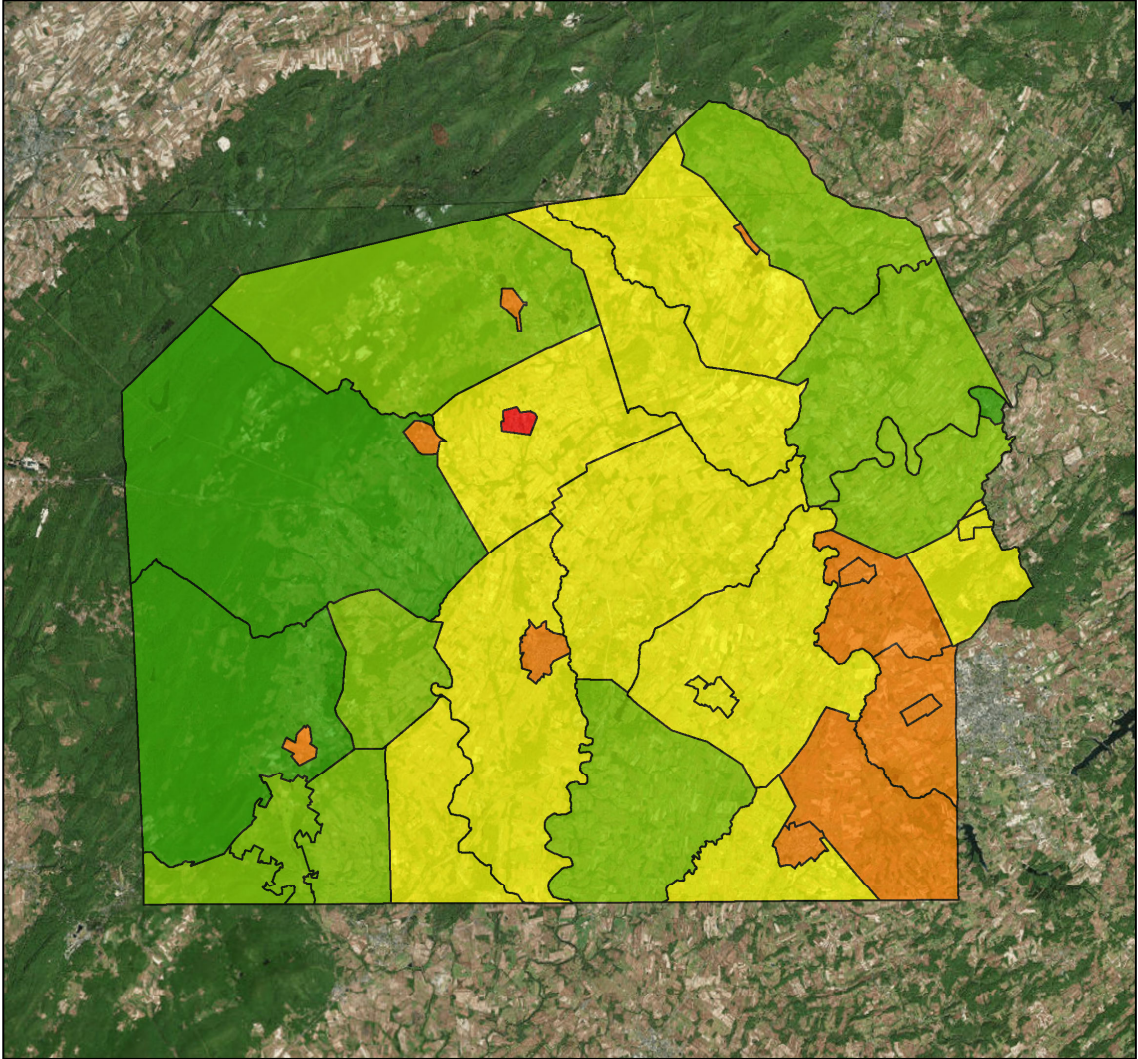
Totals by Municipalities



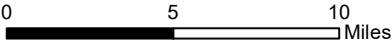
Adams County does not contain any MS4 Municipalities.

Averages for MS4 and Non-MS4 Municipalities

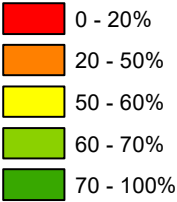
	Non-MS4	MS4
Conservation Opportunity Areas (Acres)	562	0
Restoration Opportunity Areas (Acres)	328	0
Developed Areas (Acres)	35	0
Total Buffer Acres	926	0
Percent Forest Buffer Coverage (%)	51.67	0.00



Adams County Municipalities



100' Buffer Coverage (%)



Municipality	MS4	Total 100 ft buffer acres	Conservation opportunity areas (acres)	Restoration opportunity areas (acres)	Developed areas (acres)	Percent forest buffer coverage (%)
ABBOTTSTOWN	0	19	11	7	1	57.00
ARENDTSTVILLE	0	32	7	19	6	20.92
BENDERSVILLE	0	24	11	10	3	46.72
BERWICK	0	412	231	157	23	56.15
BIGLERVILLE	0	38	5	22	10	13.56
BONNEAUVILLE	0	62	31	22	9	50.63
BUTLER	0	1,804	959	785	61	53.12
CARROLL VALLEY	0	310	210	77	23	67.53
CONEWAGO	0	696	295	353	48	42.36
CUMBERLAND	0	2,019	1,138	794	88	56.35
EAST BERLIN	0	35	27	7	2	75.15
FAIRFIELD	0	73	15	51	7	20.88
FRANKLIN	0	3,681	2,721	838	121	73.93
FREEDOM	0	839	486	338	16	57.85
GERMANY	0	787	404	362	21	51.28
GETTYSBURG	0	99	26	41	32	26.11
HAMILTON	0	904	600	287	17	66.34
HAMILTONBAN	0	2,122	1,549	496	77	73.00
HIGHLAND	0	798	509	270	19	63.78
HUNTINGTON	0	1,498	821	616	61	54.82
LATIMORE	0	1,355	888	431	36	65.57
LIBERTY	0	993	650	310	33	65.48
LITTLESTOWN	0	60	27	26	7	45.92
MCSHERRYSTOWN	0	34	9	16	10	25.35
MENALLEN	0	2,462	1,693	675	93	68.77
MOUNT JOY	0	1,726	1,042	634	50	60.38
MOUNT PLEASANT	0	1,775	927	783	65	52.23
NEW OXFORD	0	11	5	3	3	44.95
OXFORD	0	745	372	312	62	49.87
READING	0	1,602	995	565	41	62.16
STRABAN	0	2,085	1,210	795	79	58.06
TYRONE	0	1,310	761	508	42	58.05
UNION	0	1,043	480	532	31	46.01
YORK SPRINGS	0	24	6	12	5	26.62

*

Non-MS4 Regulated Municipalities

