

Bedford County Forest Buffer Summary

100 ft. Width

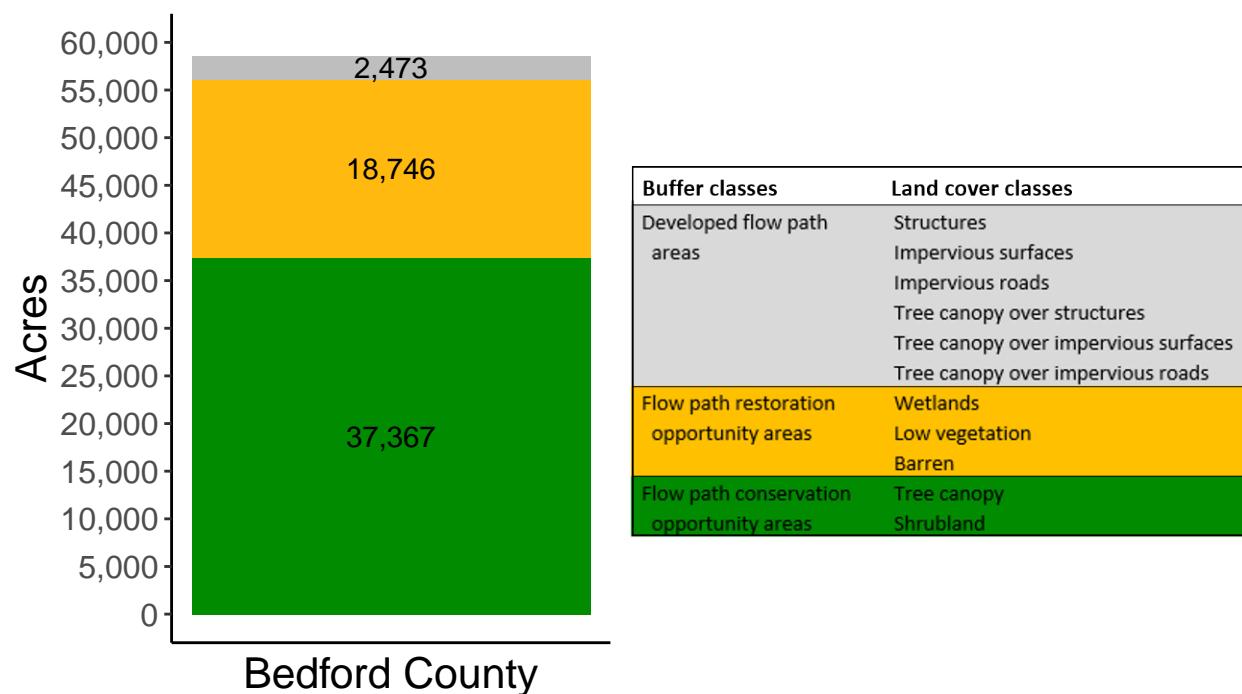
Created by: Chesapeake Conservancy, February 2019

Data Description

The buffer analysis is based on two Geospatial Information Systems (GIS) datasets created by Chesapeake Conservancy and partners. The enhanced flow path water network dataset was derived from 2006 & 2008 PAMAP Statewide digital elevation models (DEMs), developed from Lidar data. Channel heads were assigned where upslope drainage accumulation reached 60 acres. Flow paths were widened based on US Geological Survey regional curves and enhanced with high-resolution land cover. The high-resolution land cover dataset was derived from 2013 National Agriculture Inventory Program imagery. Both datasets have a spatial resolution of 1 meter. Pixels from the high-resolution land cover dataset within 35 ft. and 100 ft. distances of the enhanced flow path water network were considered in the buffer analysis. For more information and to download datasets, go to www.ChesapeakeConservancy.org and search for “data downloader.”

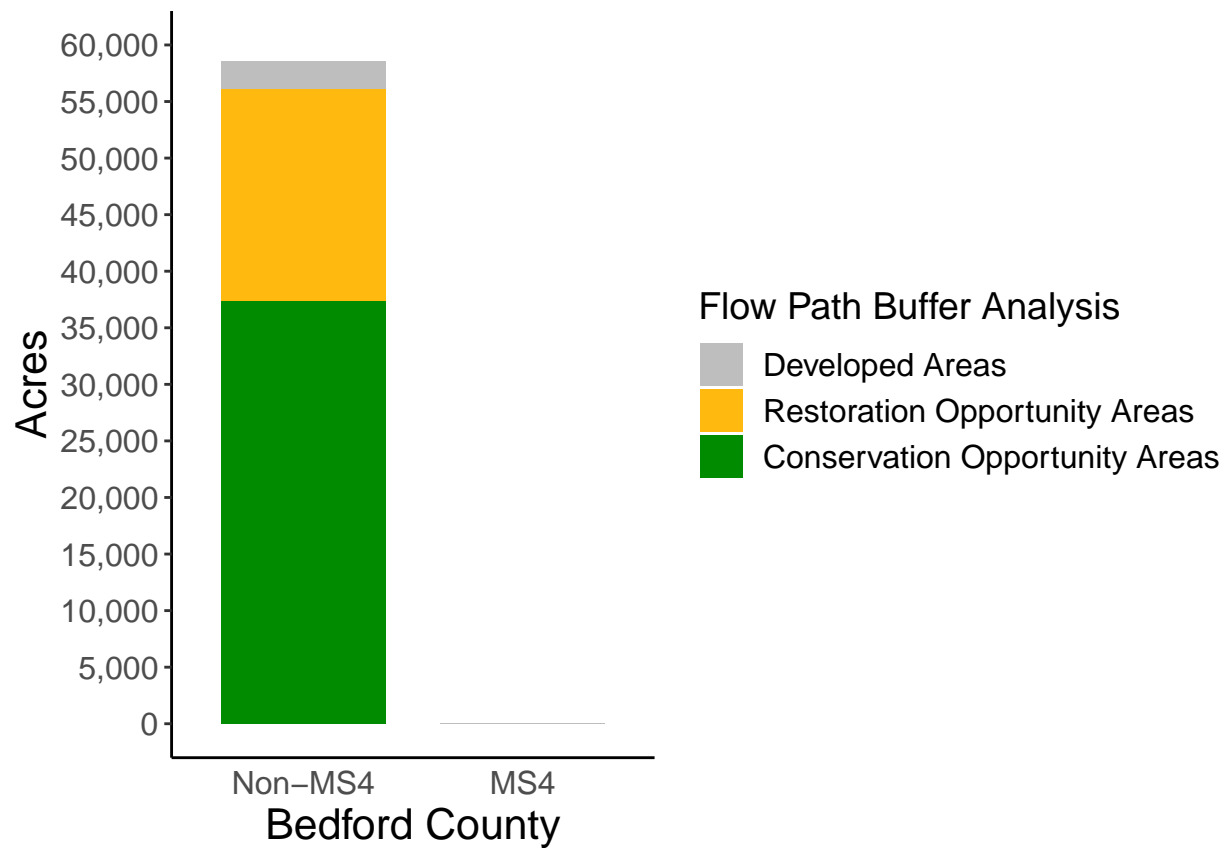
County Summary

Bedford County contains a total of 18,746 acres of flow path restoration opportunity area, and has 63.78% forest buffer coverage. Bedford County has complete buffer data coverage.



Municipal Separate Storm Sewer System (MS4) Regulated Municipality Summary

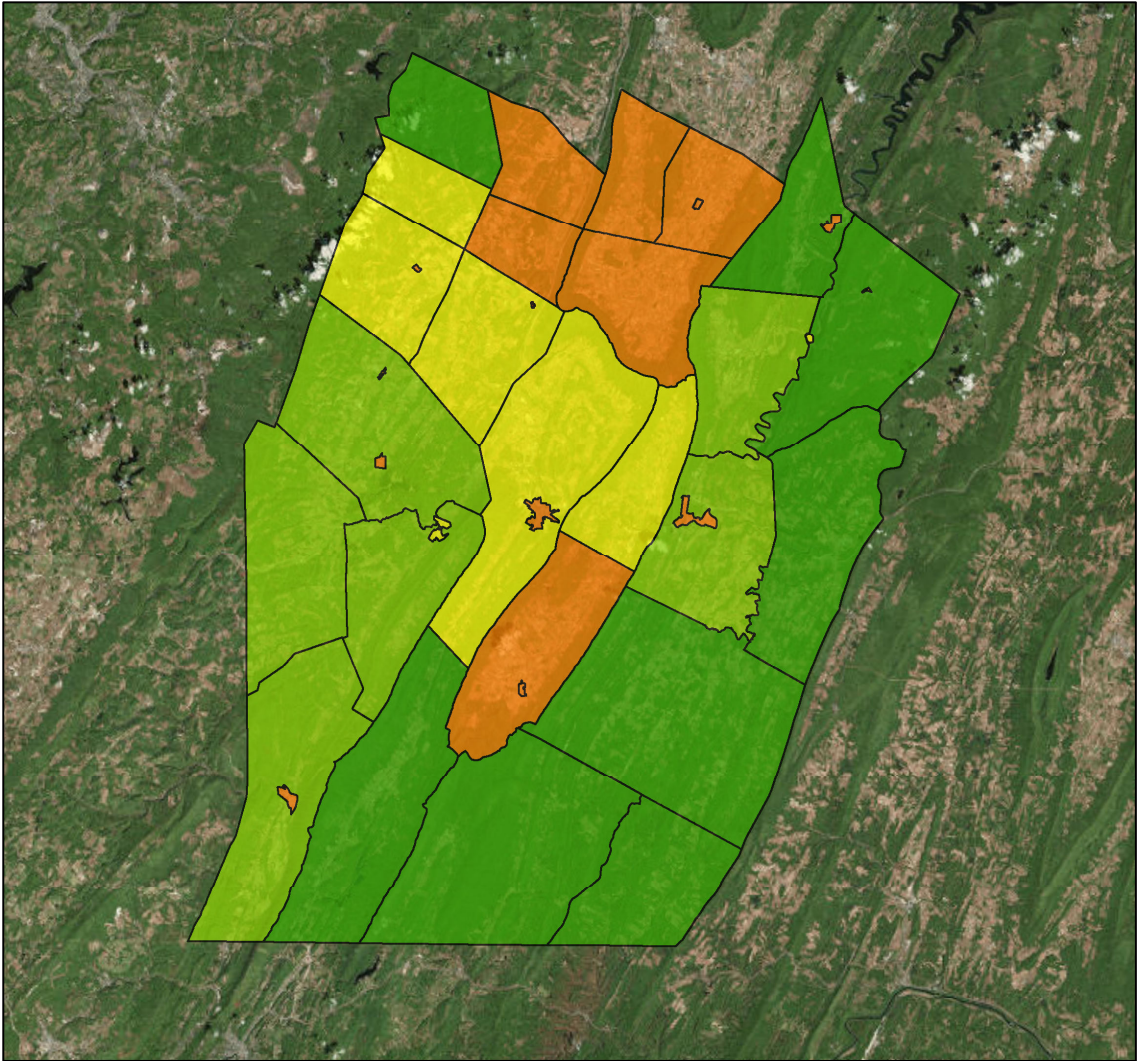
Totals by Municipalities



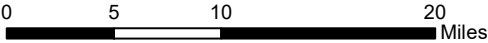
Bedford County does not contain any MS4 Municipalities.

Averages for MS4 and Non-MS4 Municipalities

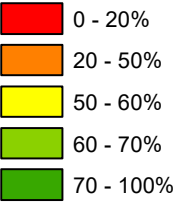
	Non-MS4	MS4
Conservation Opportunity Areas (Acres)	983	0
Restoration Opportunity Areas (Acres)	493	0
Developed Areas (Acres)	65	0
Total Buffer Acres	1542	0
Percent Forest Buffer Coverage (%)	51.39	0.00



Bedford County Municipalities



100' Buffer Coverage (%)



Municipality	MS4	Total 100 ft buffer acres	Conservation opportunity areas (acres)	Restoration opportunity areas (acres)	Developed areas (acres)	Percent forest buffer coverage (%)
BEDFORD	0	3,923	2,028	1,666	229	51.70
BEDFORD	0	94	25	35	34	26.10
BLOOMFIELD	0	1,079	413	619	46	38.31
BROAD TOP	0	2,453	2,010	363	80	81.95
COALDALE	0	7	2	3	3	26.08
COLERAIN	0	2,468	1,126	1,282	59	45.64
CUMBERLAND VALLEY	0	3,550	2,508	956	86	70.65
EAST PROVIDENCE	0	3,009	2,337	550	122	77.68
EAST ST CLAIR	0	2,303	1,203	973	126	52.26
EVERETT	0	120	40	50	30	33.61
HARRISON	0	2,124	1,350	701	72	63.58
HOPEWELL	0	1,933	1,173	665	95	60.68
HOPEWELL	0	6	4	1	1	59.23
HYNDMAN	0	89	28	32	29	31.59
JUNIATA	0	2,796	1,847	827	122	66.06
KIMMEL	0	1,081	520	497	64	48.07
KING	0	994	358	569	67	36.02
LIBERTY	0	1,432	1,076	298	59	75.11
LINCOLN	0	808	475	290	42	58.80
LONDONDERRY	0	3,130	2,136	809	185	68.24
MANN	0	2,293	1,893	341	60	82.53
MANNS CHOICE	0	42	21	17	3	50.28
MONROE	0	4,831	3,584	1,143	104	74.17
NAPIER	0	3,438	2,102	1,187	149	61.14
NEW PARIS	0	7	2	4	1	29.70
PAVIA	0	1,158	996	131	31	86.04
PLEASANTVILLE	0	11	3	5	3	26.56
RAINSBURG	0	13	4	8	1	34.85
SAXTON	0	22	8	7	7	34.03
SHELLSBURG	0	26	9	11	5	36.30
SNAKE SPRING	0	1,584	796	692	96	50.24
SOUTH WOODBURY	0	1,914	733	1,086	96	38.27
SOUTHAMPTON	0	4,479	3,558	825	96	79.44
ST CLAIRSVILLE	0	1	0	1	0	13.60
WEST PROVIDENCE	0	2,360	1,637	604	119	69.36

(continued)

Municipality	MS4	Total 100 ft buffer acres	Conservation opportunity areas (acres)	Restoration opportunity areas (acres)	Developed areas (acres)	Percent forest buffer coverage (%)
WEST ST CLAIR	0	1,727	918	718	91	53.13
WOODBURY	0	1,273	443	775	56	34.75
WOODBURY	0	9	2	5	2	27.10

*

Non-MS4 Regulated Municipalities

