

Berks County Forest Buffer Summary

100 ft. Width

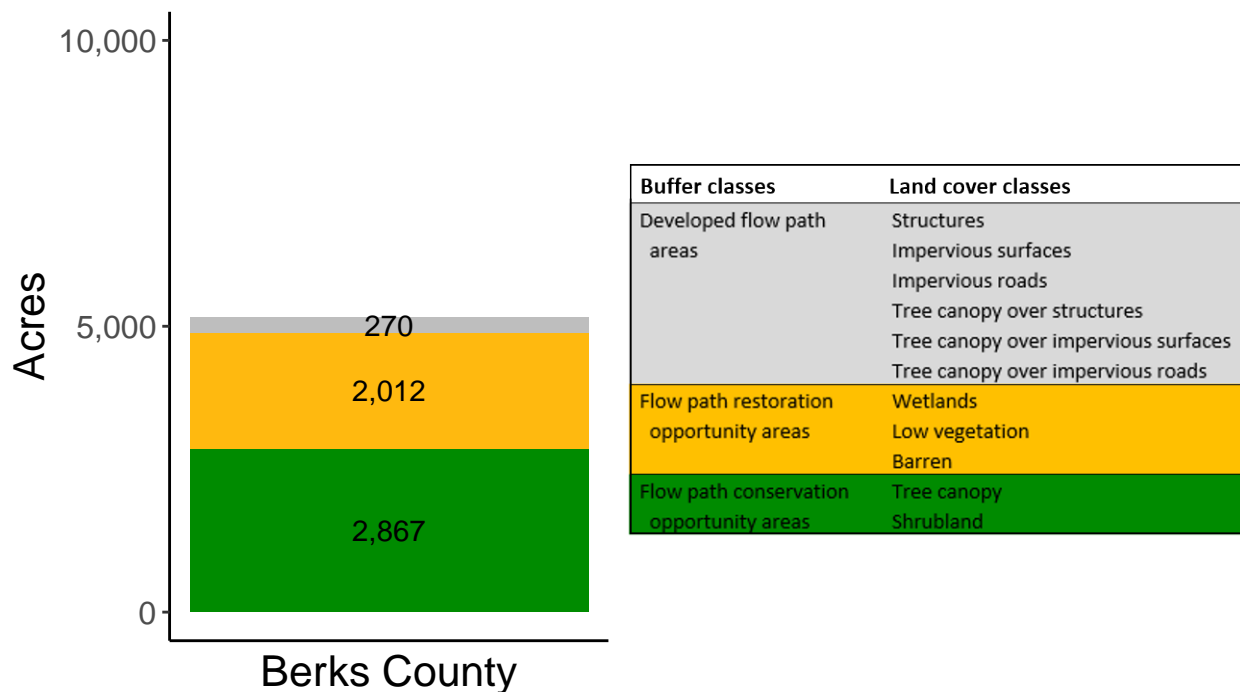
Created by: Chesapeake Conservancy, February 2019

Data Description

The buffer analysis is based on two Geospatial Information Systems (GIS) datasets created by Chesapeake Conservancy and partners. The enhanced flow path water network dataset was derived from 2006 & 2008 PAMAP Statewide digital elevation models (DEMs), developed from Lidar data. Channel heads were assigned where upslope drainage accumulation reached 60 acres. Flow paths were widened based on US Geological Survey regional curves and enhanced with high-resolution land cover. The high-resolution land cover dataset was derived from 2013 National Agriculture Inventory Program imagery. Both datasets have a spatial resolution of 1 meter. Pixels from the high-resolution land cover dataset within 35 ft. and 100 ft. distances of the enhanced flow path water network were considered in the buffer analysis. For more information and to download datasets, go to www.ChesapeakeConservancy.org and search for “data downloader.”

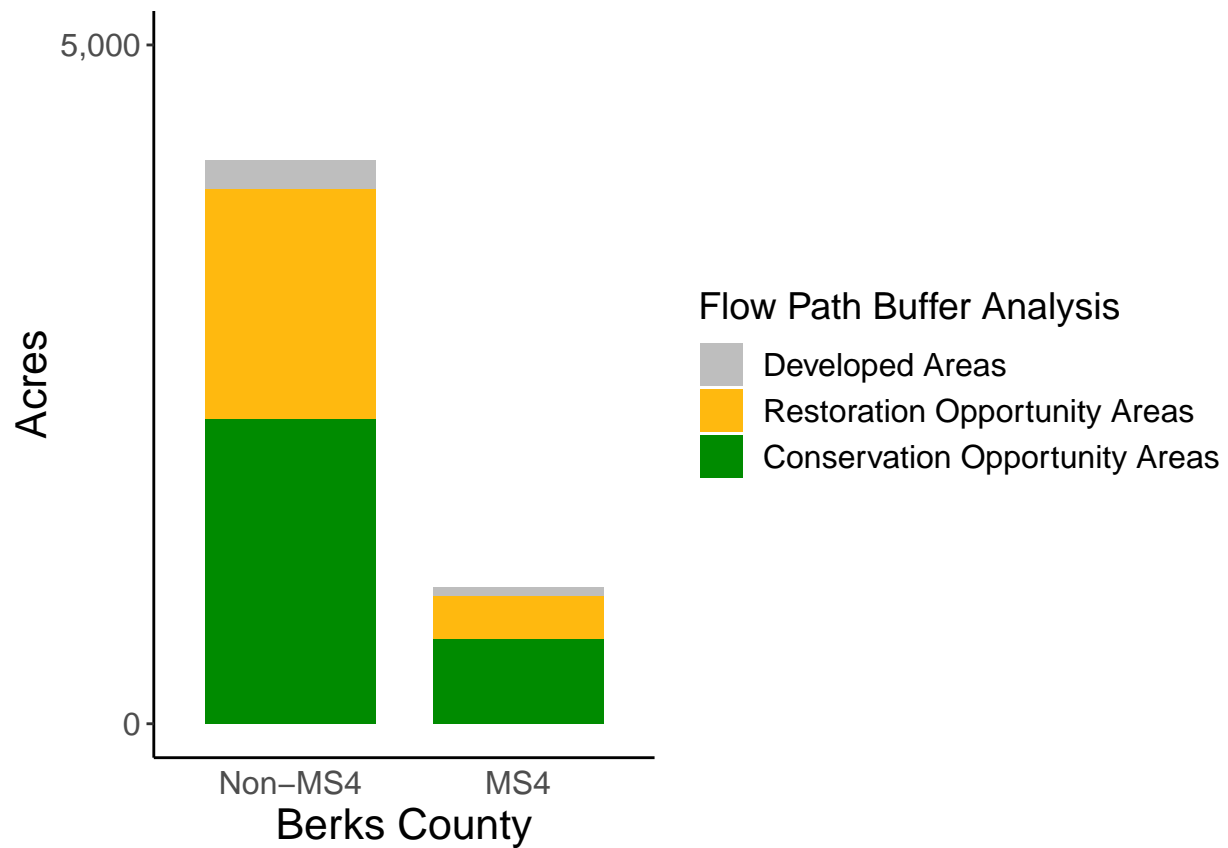
County Summary

Berks County contains a total of 2,012 acres of flow path restoration opportunity area, and has 55.67% forest buffer coverage. Berks County has incomplete buffer data coverage.



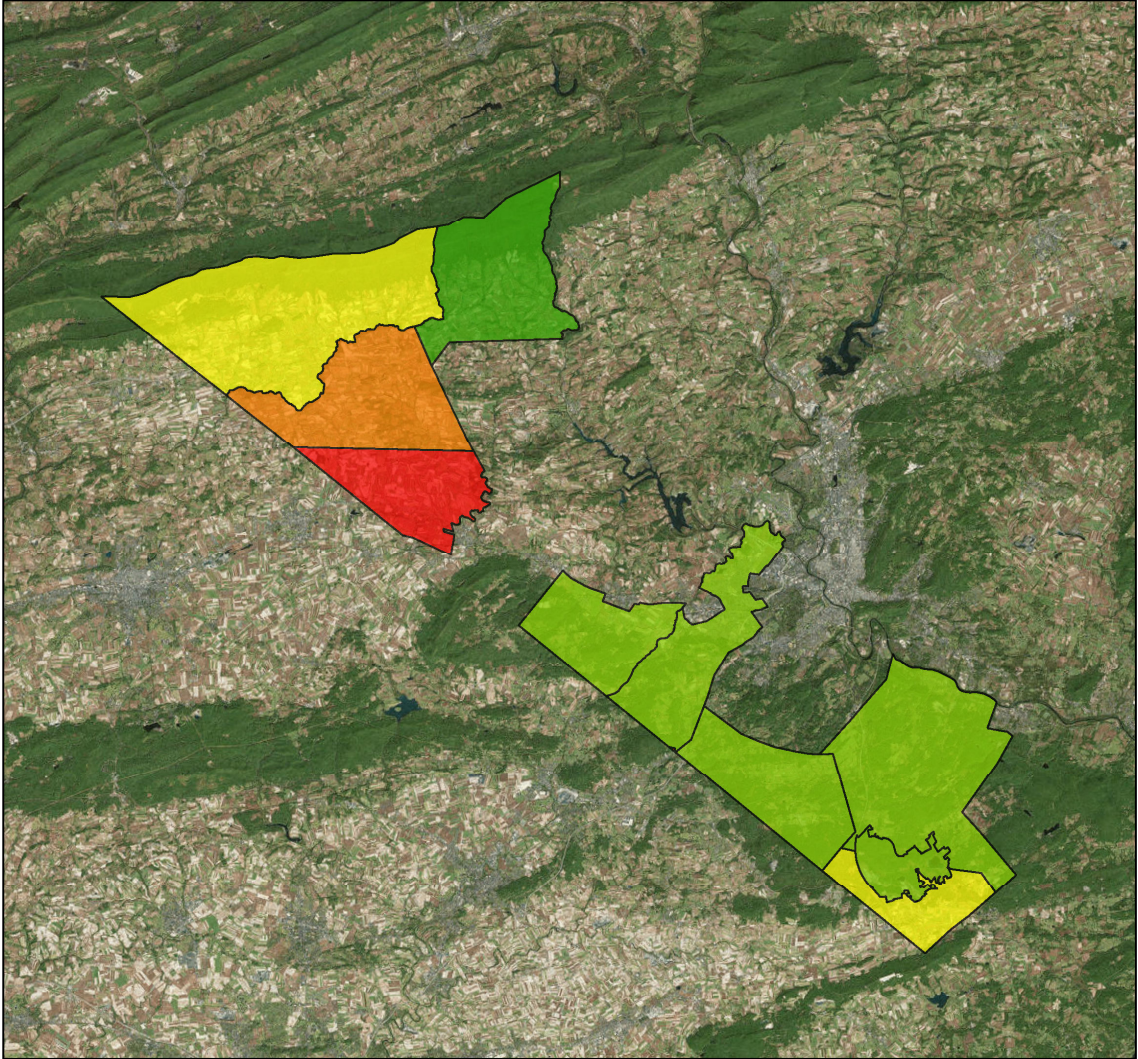
Municipal Separate Storm Sewer System (MS4) Regulated Municipality Summary

Totals by Municipalities



Averages for MS4 and Non-MS4 Municipalities

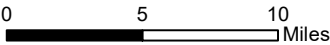
	Non-MS4	MS4
Conservation Opportunity Areas (Acres)	449	125
Restoration Opportunity Areas (Acres)	339	63
Developed Areas (Acres)	41	13
Total Buffer Acres	829	201
Percent Forest Buffer Coverage (%)	59.15	54.17



Berks County Municipalities

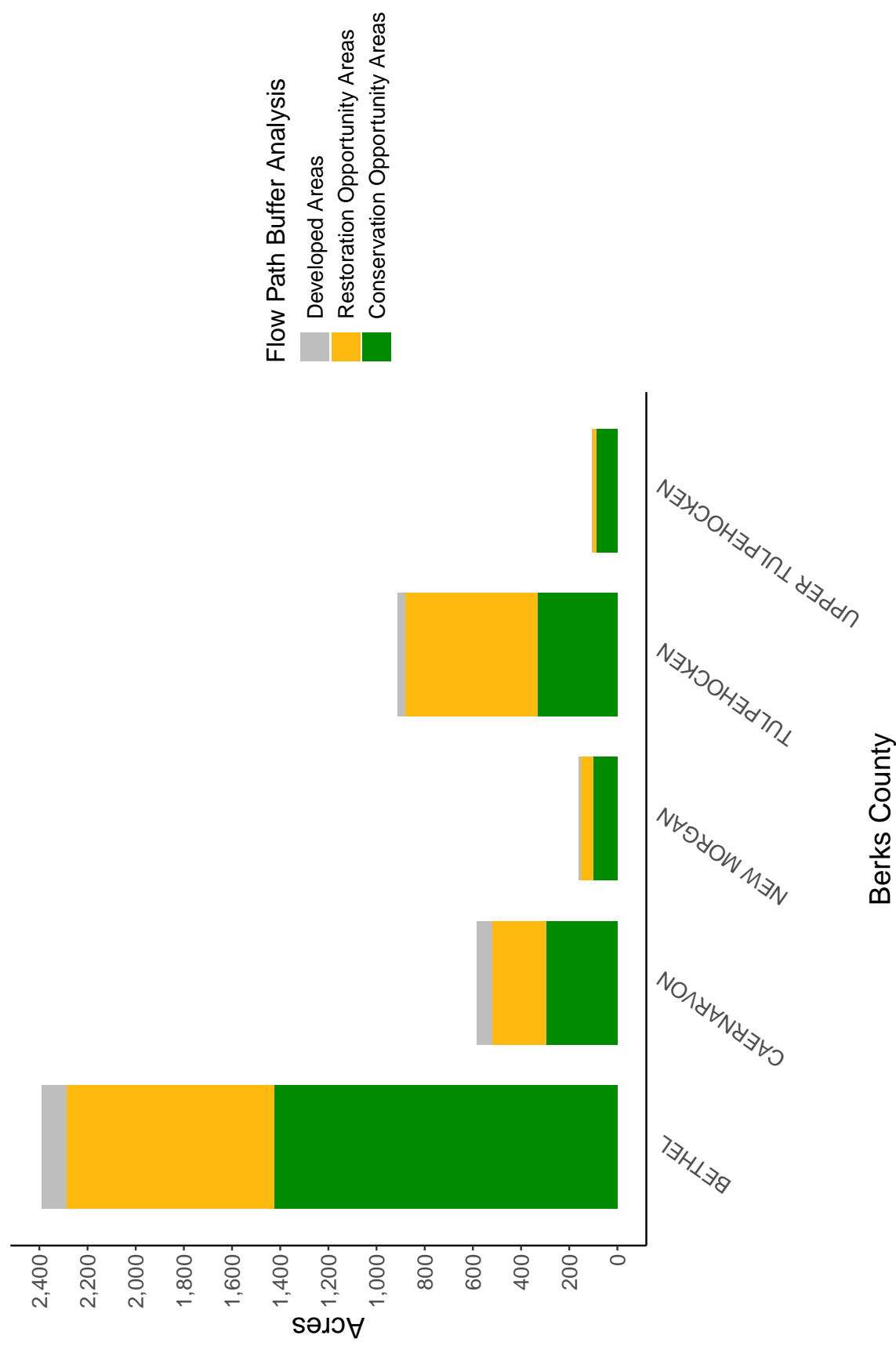
100' Buffer Coverage (%)

- 0 - 20%
- 20 - 50%
- 50 - 60%
- 60 - 70%
- 70 - 100%



Municipality	MS4	Total 100 ft buffer acres	Conservation opportunity areas (acres)	Restoration opportunity areas (acres)	Developed areas (acres)	Percent forest buffer coverage (%)
BETHEL	0	2,389	1,425	861	103	59.64
CAERNARVON	0	584	295	224	64	50.60
NEW MORGAN	0	160	102	50	8	63.79
TULPEHOCKEN	0	910	332	549	30	36.48
UPPER TULPEHOCKEN	0	104	89	13	2	85.24
BRECKNOCK	1	456	309	115	31	67.78
MARION	1	61	8	49	4	12.82
ROBESON	1	10	6	3	0	63.08
SOUTH HEIDELBERG	1	126	81	37	8	64.35
SPRING	1	350	220	110	20	62.83

Non-MS4 Regulated Municipalities



MS4 Regulated Municipalities

