

Carbon County Forest Buffer Summary

100 ft. Width

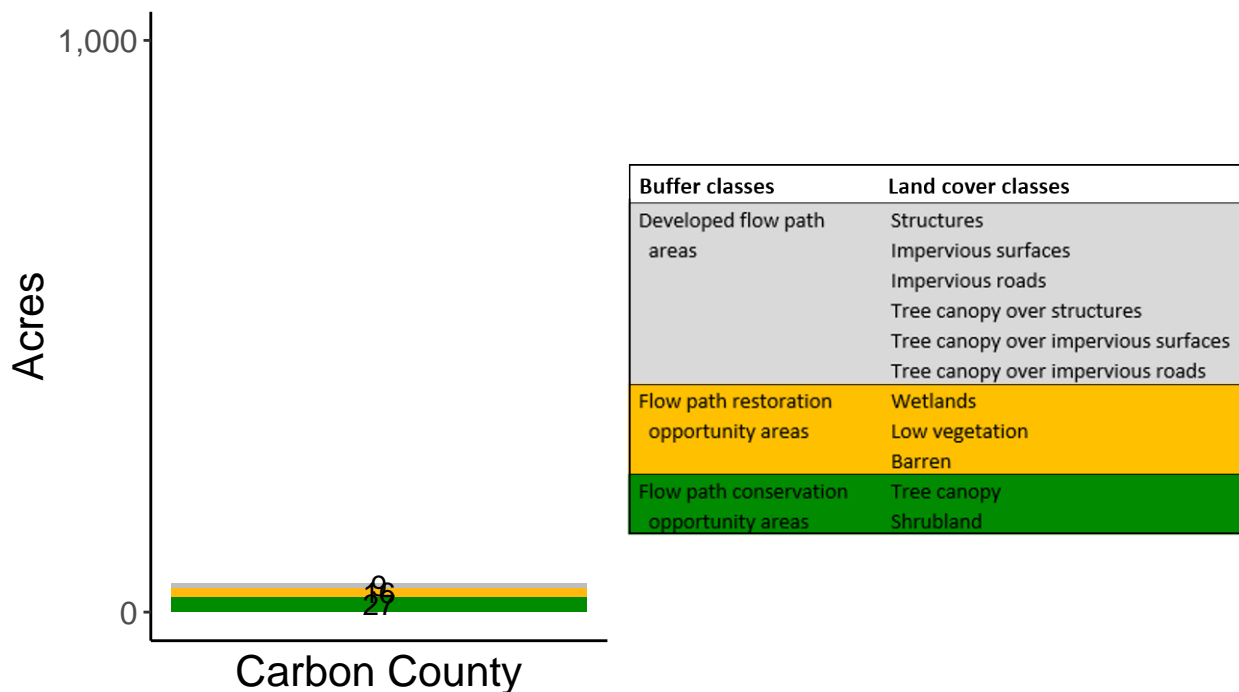
Created by: Chesapeake Conservancy, February 2019

Data Description

The buffer analysis is based on two Geospatial Information Systems (GIS) datasets created by Chesapeake Conservancy and partners. The enhanced flow path water network dataset was derived from 2006 & 2008 PAMAP Statewide digital elevation models (DEMs), developed from Lidar data. Channel heads were assigned where upslope drainage accumulation reached 60 acres. Flow paths were widened based on US Geological Survey regional curves and enhanced with high-resolution land cover. The high-resolution land cover dataset was derived from 2013 National Agriculture Inventory Program imagery. Both datasets have a spatial resolution of 1 meter. Pixels from the high-resolution land cover dataset within 35 ft. and 100 ft. distances of the enhanced flow path water network were considered in the buffer analysis. For more information and to download datasets, go to www.ChesapeakeConservancy.org and search for “data downloader.”

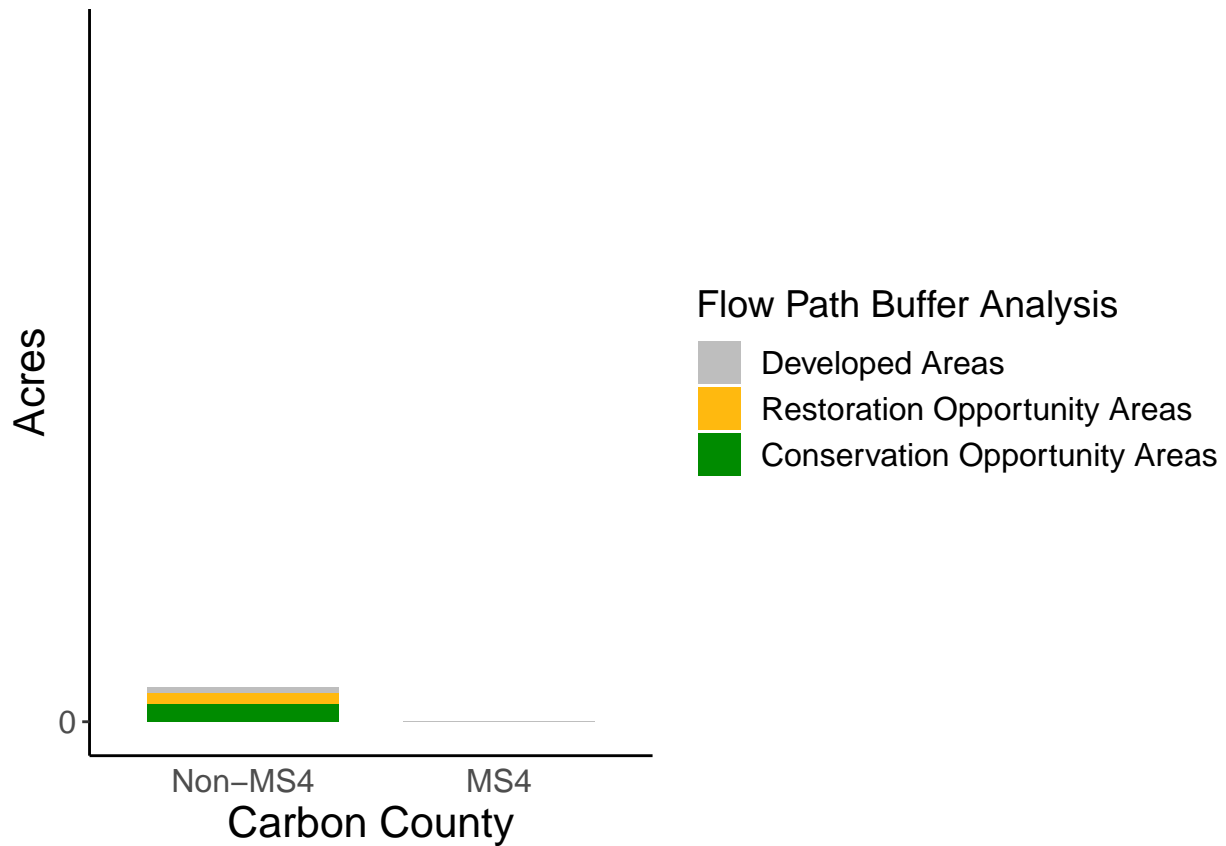
County Summary

Carbon County contains a total of 16 acres of flow path restoration opportunity area, and has 52.77% forest buffer coverage. Carbon County has incomplete buffer data coverage.



Municipal Separate Storm Sewer System (MS4) Regulated Municipality Summary

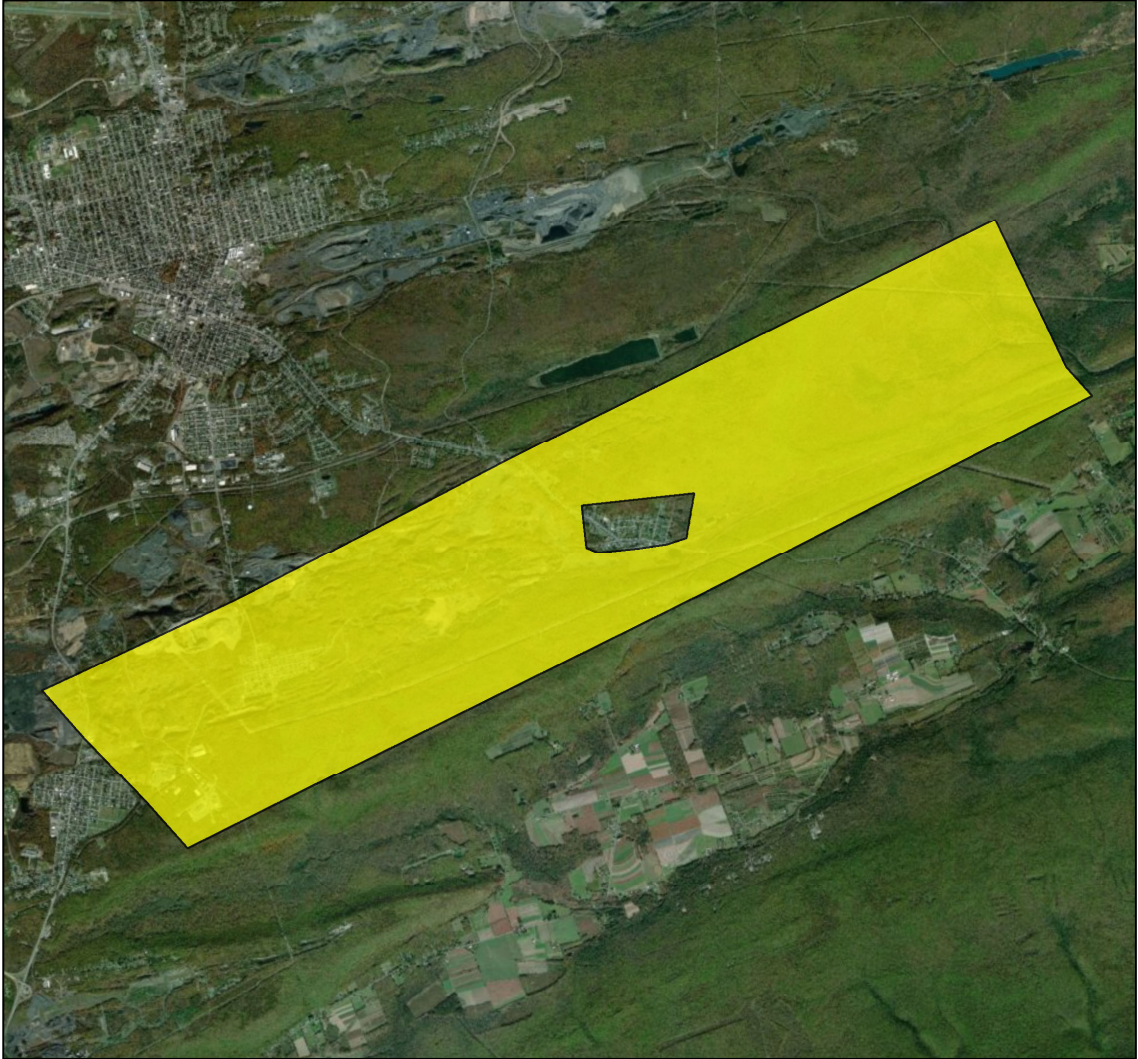
Totals by Municipalities



Carbon County does not contain any MS4 Municipalities.

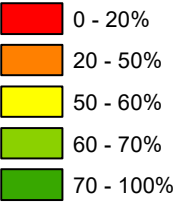
Averages for MS4 and Non-MS4 Municipalities

	MS4	Non-MS4
Conservation Opportunity Areas (Acres)	27	0
Restoration Opportunity Areas (Acres)	16	0
Developed Areas (Acres)	9	0
Total Buffer Acres	51	0
Percent Forest Buffer Coverage (%)	52.77	0.00



Carbon County Municipalities

100' Buffer Coverage (%)



Municipality	MS4	Total 100 ft buffer acres	Conservation opportunity areas (acres)	Restoration opportunity areas (acres)	Developed areas (acres)	Percent forest buffer coverage (%)
BANKS	1	51	27	16	9	52.77

MS4 Regulated Municipalities

