

Chester County Forest Buffer Summary

100 ft. Width

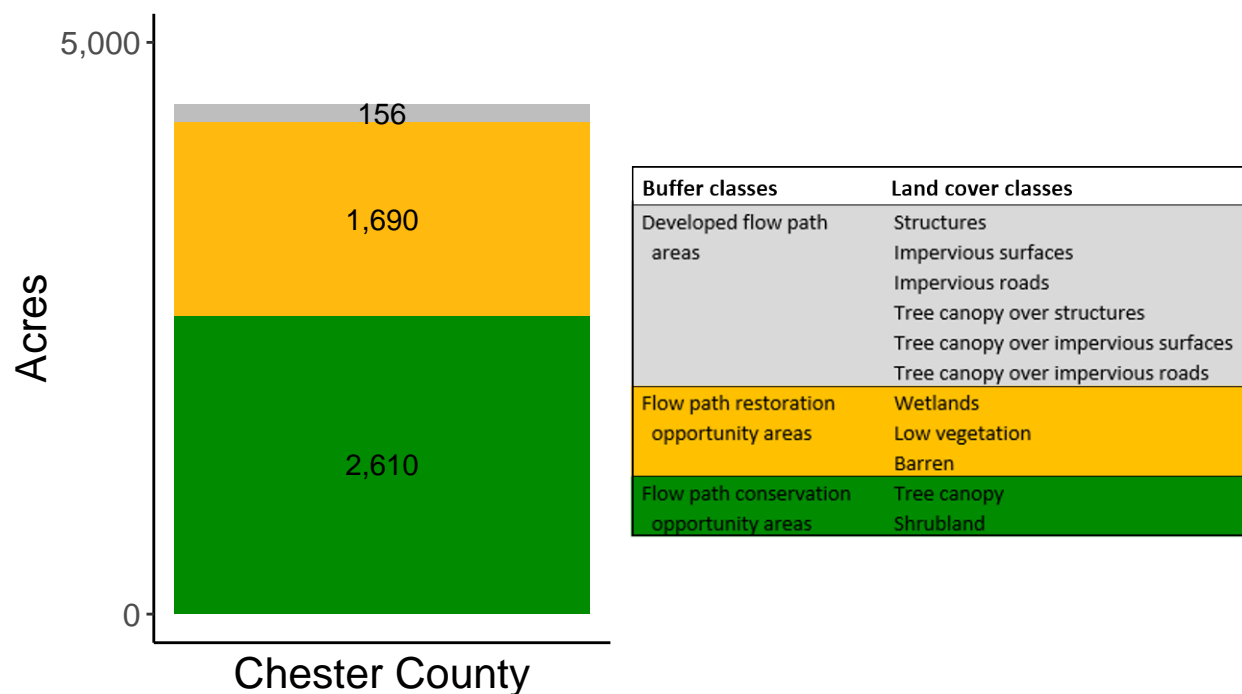
Created by: Chesapeake Conservancy, February 2019

Data Description

The buffer analysis is based on two Geospatial Information Systems (GIS) datasets created by Chesapeake Conservancy and partners. The enhanced flow path water network dataset was derived from 2006 & 2008 PAMAP Statewide digital elevation models (DEMs), developed from Lidar data. Channel heads were assigned where upslope drainage accumulation reached 60 acres. Flow paths were widened based on US Geological Survey regional curves and enhanced with high-resolution land cover. The high-resolution land cover dataset was derived from 2013 National Agriculture Inventory Program imagery. Both datasets have a spatial resolution of 1 meter. Pixels from the high-resolution land cover dataset within 35 ft. and 100 ft. distances of the enhanced flow path water network were considered in the buffer analysis. For more information and to download datasets, go to www.ChesapeakeConservancy.org and search for “data downloader.”

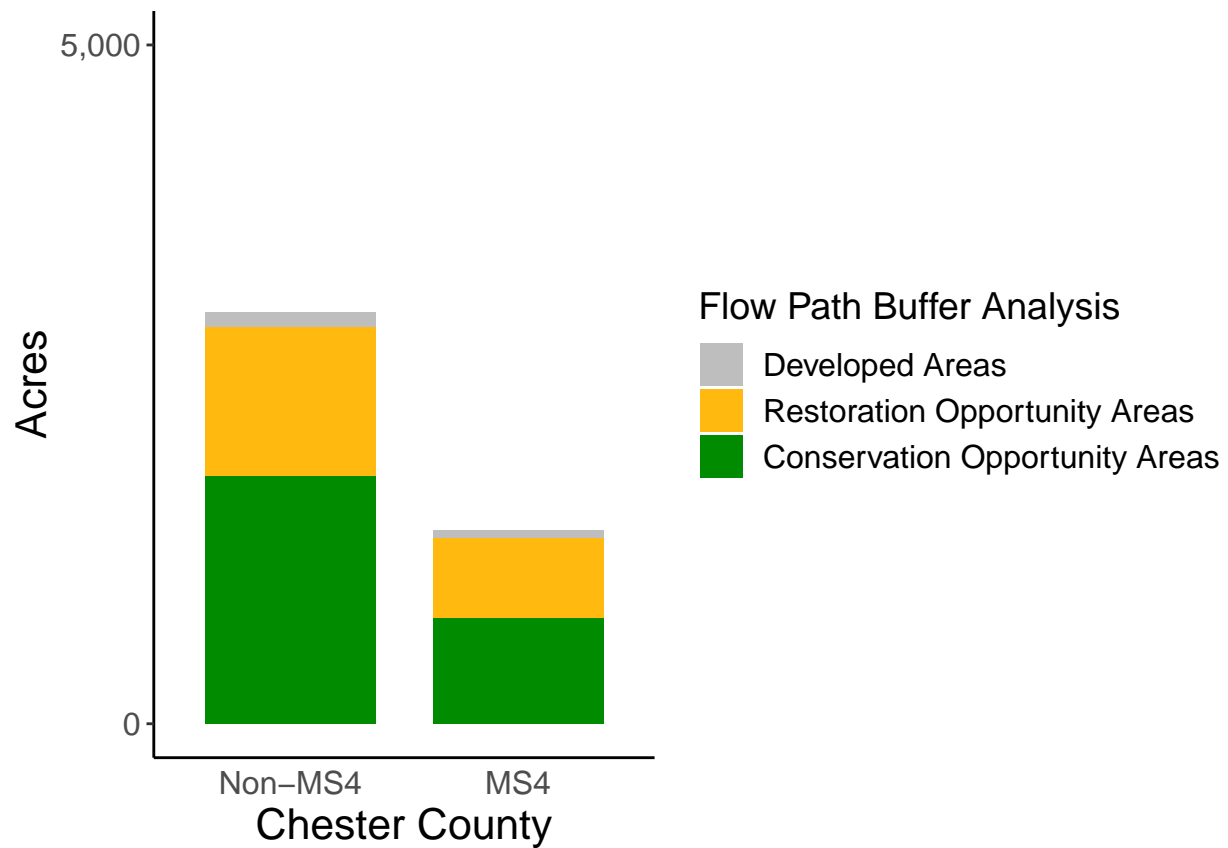
County Summary

Chester County contains a total of 1,690 acres of flow path restoration opportunity area, and has 58.57% forest buffer coverage. Chester County has incomplete buffer data coverage.



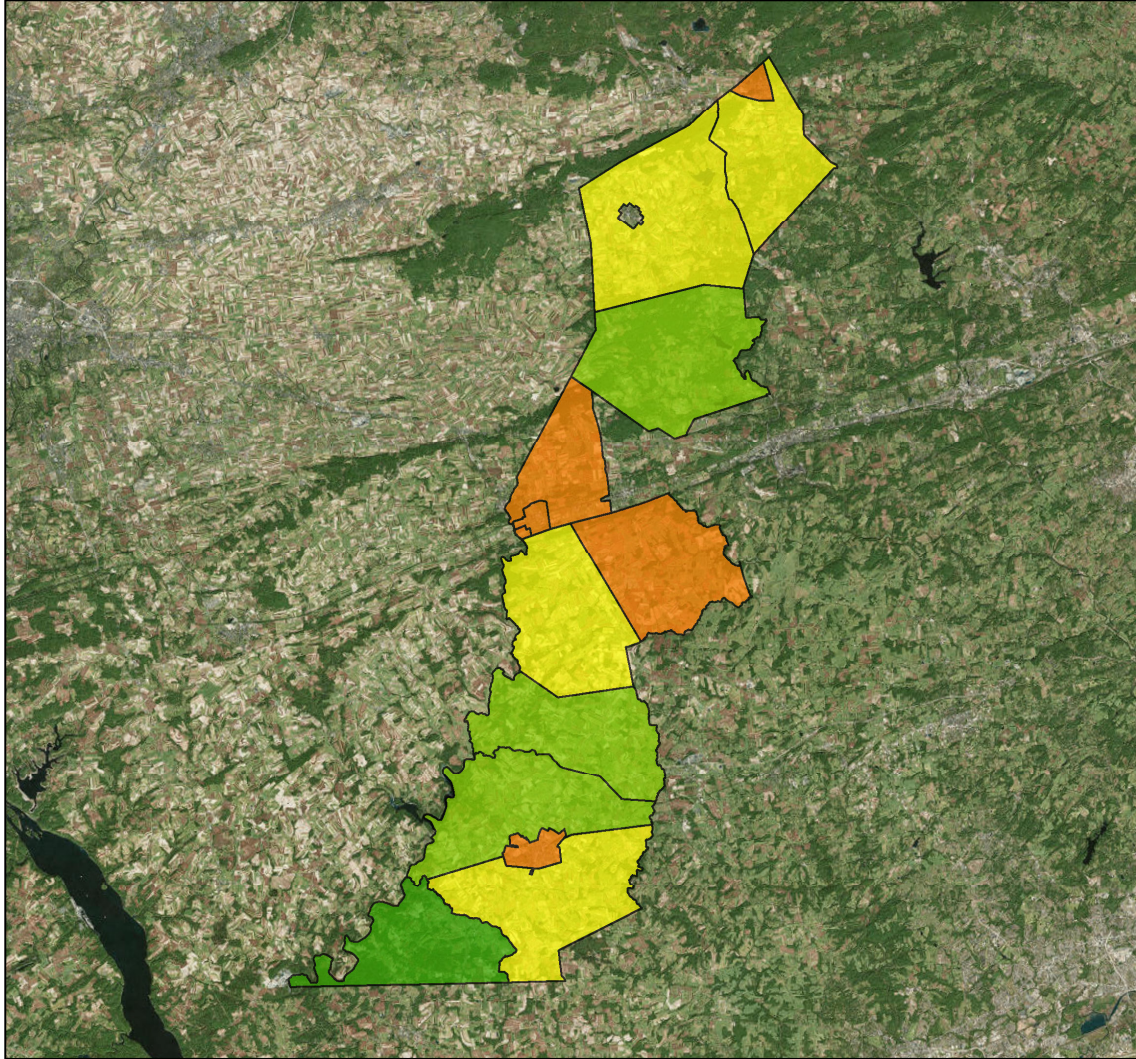
Municipal Separate Storm Sewer System (MS4) Regulated Municipality Summary

Totals by Municipalities

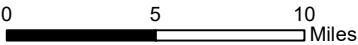


Averages for MS4 and Non-MS4 Municipalities

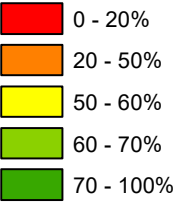
	Non-MS4	MS4
Conservation Opportunity Areas (Acres)	203	195
Restoration Opportunity Areas (Acres)	122	148
Developed Areas (Acres)	12	13
Total Buffer Acres	337	356
Percent Forest Buffer Coverage (%)	54.50	54.82



Chester County Municipalities

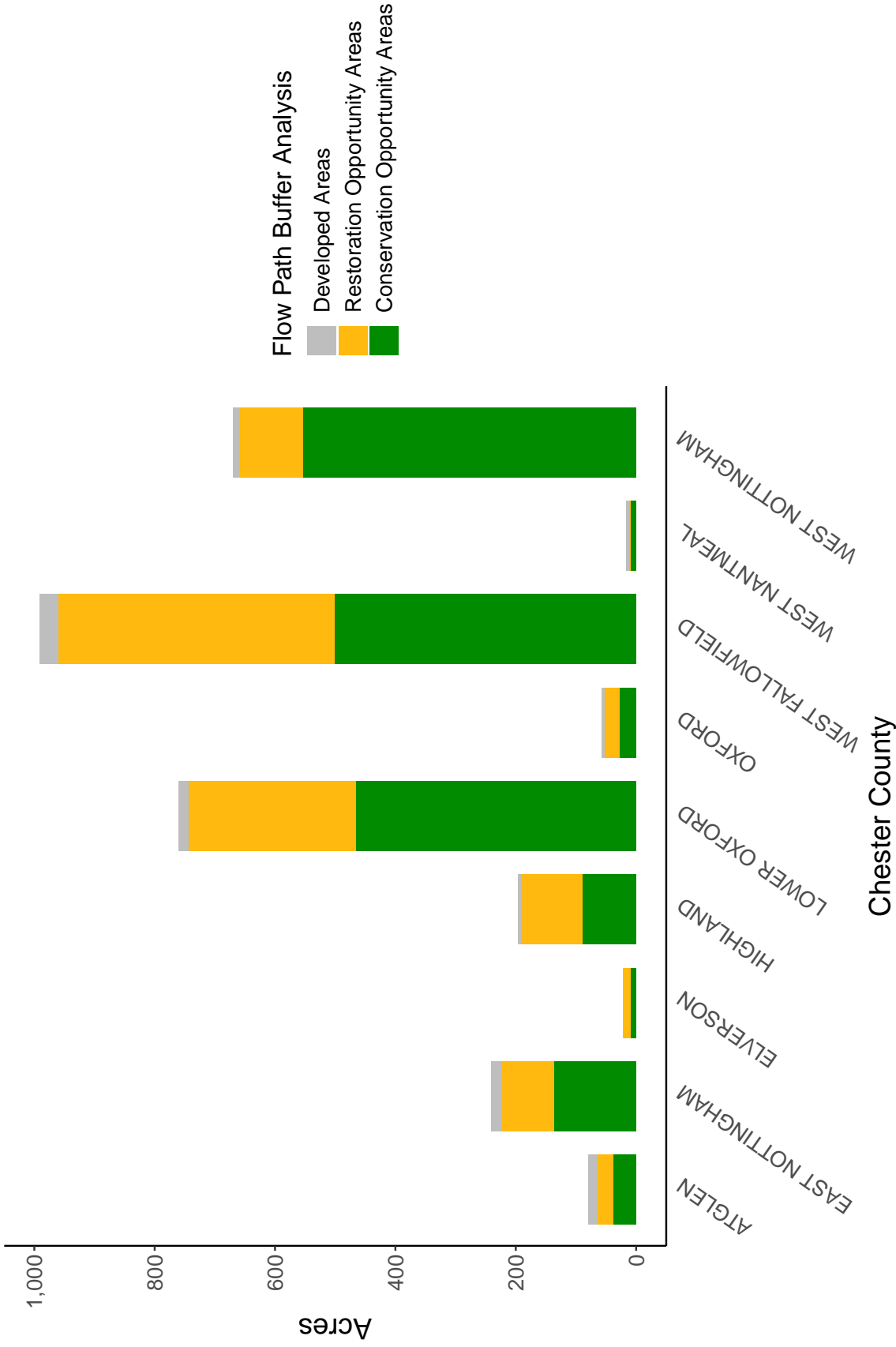


100' Buffer Coverage (%)



Municipality	MS4	Total 100 ft buffer acres	Conservation opportunity areas (acres)	Restoration opportunity areas (acres)	Developed areas (acres)	Percent forest buffer coverage (%)
ATGLEN	0	80	38	27	15	47.66
EAST NOTTINGHAM	0	241	137	87	17	56.87
ELVERSON	0	22	9	12	1	39.39
HIGHLAND	0	196	89	103	4	45.46
LOWER OXFORD	0	760	465	279	16	61.12
OXFORD	0	57	28	24	5	49.45
WEST FALLOWFIELD	0	991	502	458	31	50.68
WEST NANTMEAL	0	15	9	3	4	57.16
WEST NOTTINGHAM	0	671	554	105	11	82.69
HONEY BROOK	1	65	33	30	2	50.51
UPPER OXFORD	1	568	354	206	8	62.33
WEST CALN	1	281	185	87	9	65.85
WEST SADSBUURY	1	509	207	269	34	40.62

Non-MS4 Regulated Municipalities



MS4 Regulated Municipalities

