

Columbia County Forest Buffer Summary

100 ft. Width

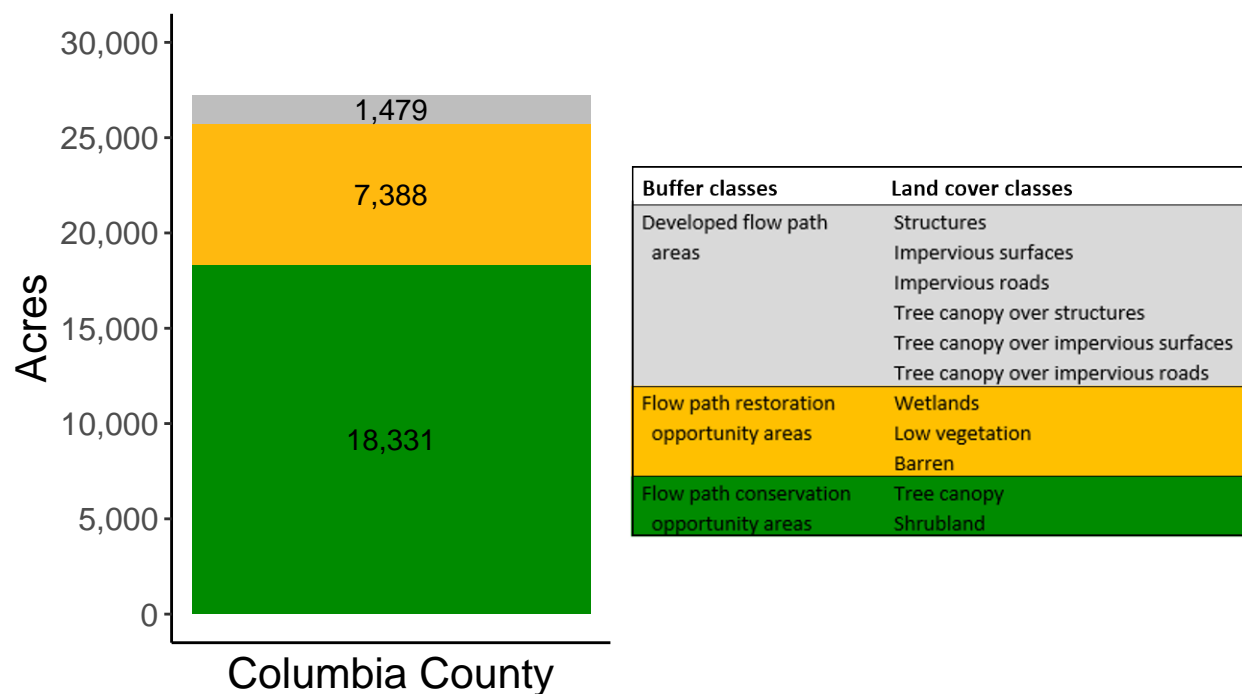
Created by: Chesapeake Conservancy, February 2019

Data Description

The buffer analysis is based on two Geospatial Information Systems (GIS) datasets created by Chesapeake Conservancy and partners. The enhanced flow path water network dataset was derived from 2006 & 2008 PAMAP Statewide digital elevation models (DEMs), developed from Lidar data. Channel heads were assigned where upslope drainage accumulation reached 60 acres. Flow paths were widened based on US Geological Survey regional curves and enhanced with high-resolution land cover. The high-resolution land cover dataset was derived from 2013 National Agriculture Inventory Program imagery. Both datasets have a spatial resolution of 1 meter. Pixels from the high-resolution land cover dataset within 35 ft. and 100 ft. distances of the enhanced flow path water network were considered in the buffer analysis. For more information and to download datasets, go to www.ChesapeakeConservancy.org and search for “data downloader.”

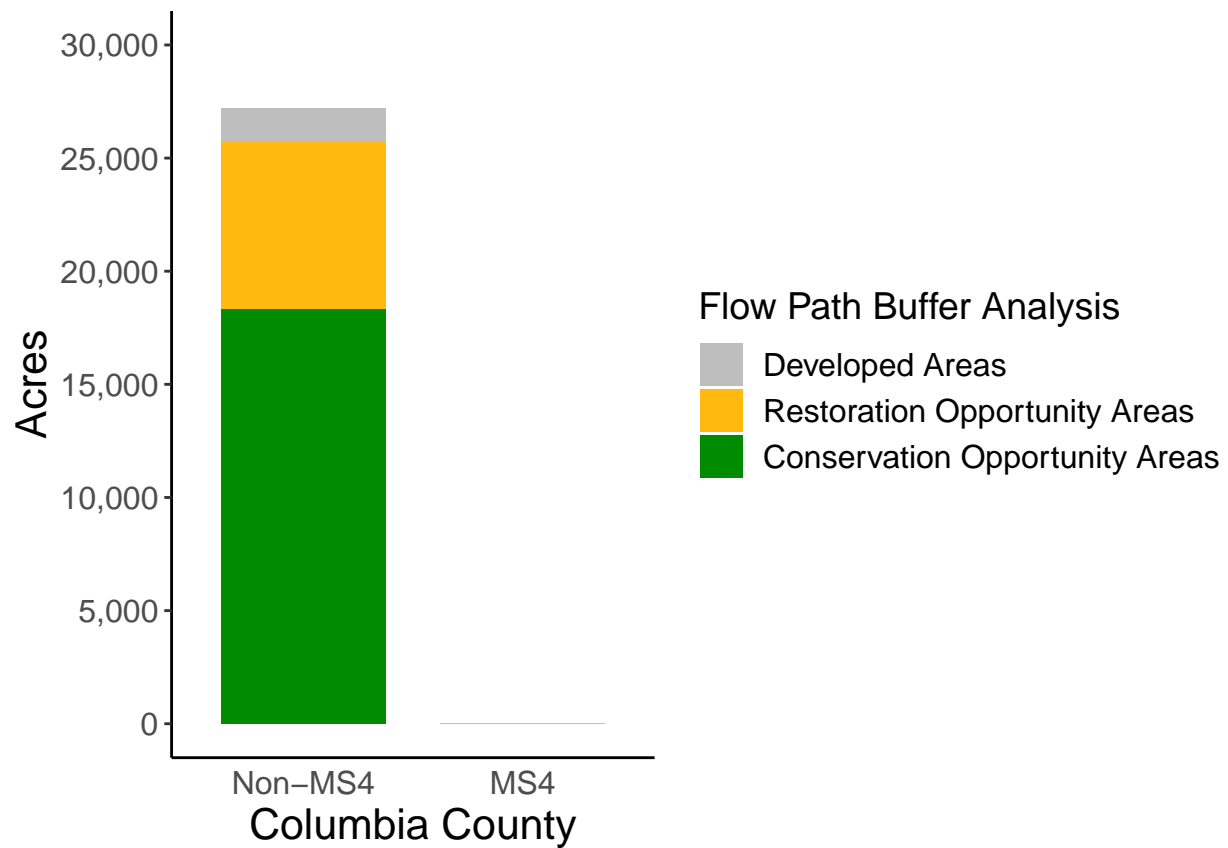
County Summary

Columbia County contains a total of 7,388 acres of flow path restoration opportunity area, and has 67.4% forest buffer coverage. Columbia County has complete buffer data coverage.



Municipal Separate Storm Sewer System (MS4) Regulated Municipality Summary

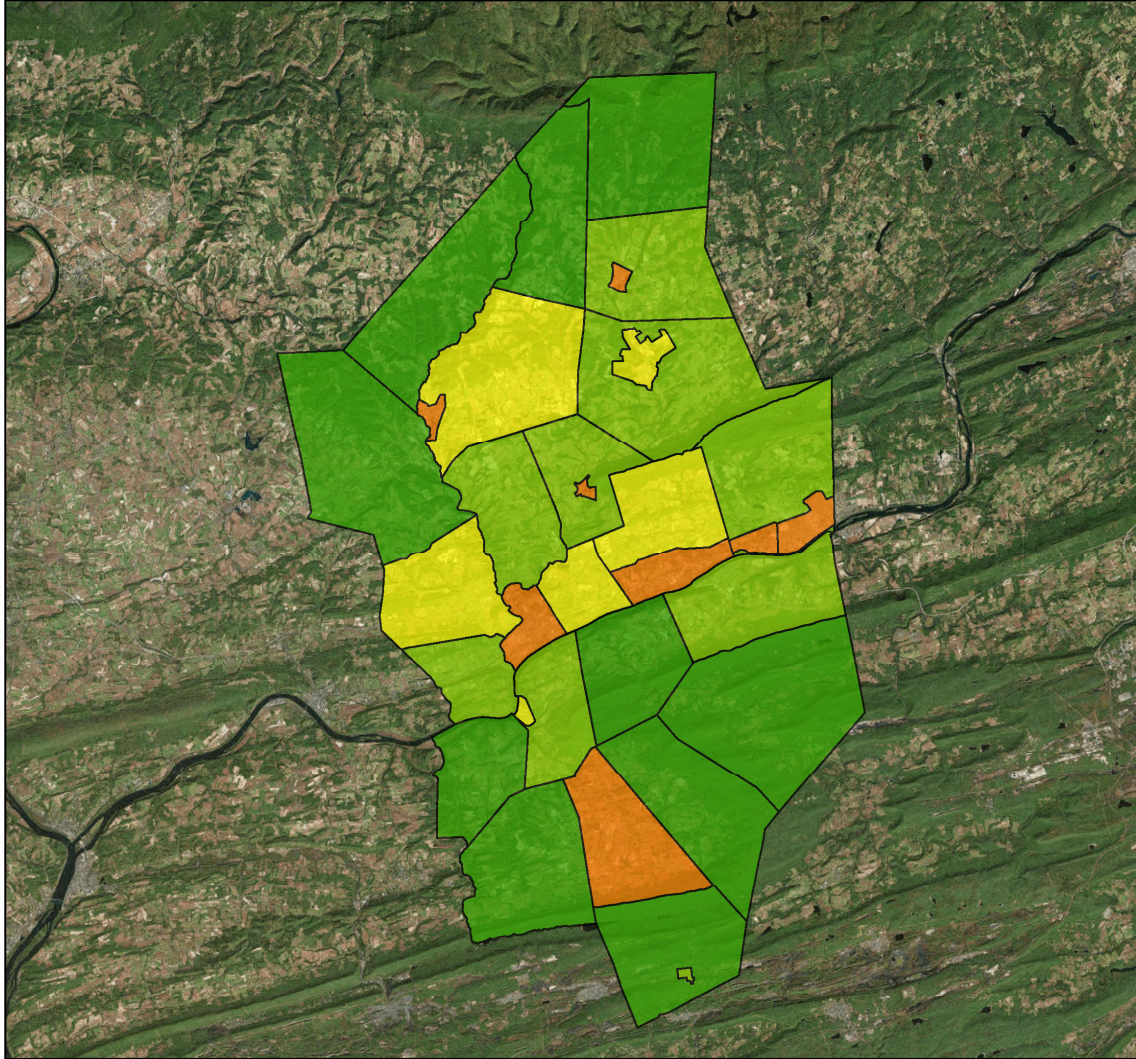
Totals by Municipalities



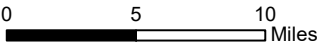
Columbia County does not contain any MS4 Municipalities.

Averages for MS4 and Non-MS4 Municipalities

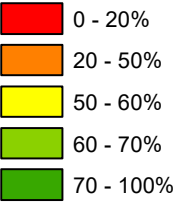
	Non-MS4	MS4
Conservation Opportunity Areas (Acres)	555	0
Restoration Opportunity Areas (Acres)	224	0
Developed Areas (Acres)	45	0
Total Buffer Acres	824	0
Percent Forest Buffer Coverage (%)	61.70	0.00



Columbia County Municipalities



100' Buffer Coverage (%)



Municipality	MS4	Total 100 ft buffer acres	Conservation opportunity areas (acres)	Restoration opportunity areas (acres)	Developed areas (acres)	Percent forest buffer coverage (%)
BEAVER	0	1,525	1,326	180	19	86.95
BENTON	0	1,280	769	454	57	60.10
BENTON	0	89	34	35	19	38.65
BERWICK	0	228	60	73	95	26.35
BLOOMSBURG	0	350	147	107	96	42.04
BRIAR CREEK	0	1,116	752	320	44	67.35
BRIAR CREEK	0	129	63	53	13	49.02
CATAWISSA	0	606	420	144	42	69.30
CATAWISSA	0	74	43	17	14	57.89
CENTRALIA	0	5	3	1	1	64.07
CLEVELAND	0	1,160	818	288	54	70.52
CONYNGHAM	0	944	709	195	40	75.10
FISHING CREEK	0	1,571	1,051	463	57	66.91
FRANKLIN	0	815	579	198	38	71.00
GREENWOOD	0	1,745	1,047	623	75	59.99
HEMLOCK	0	1,039	585	365	89	56.34
JACKSON	0	937	709	197	31	75.66
LOCUST	0	1,009	495	471	43	49.03
MADISON	0	1,891	1,341	486	64	70.91
MAIN	0	909	677	198	34	74.48
MIFFLIN	0	1,097	663	365	69	60.45
MILLVILLE	0	67	32	28	7	47.69
MONTOUR	0	688	416	211	61	60.53
MT PLEASANT	0	977	650	271	57	66.48
NORTH CENTRE	0	709	382	293	34	53.82
ORANGE	0	830	555	228	47	66.80
ORANGEVILLE	0	39	18	16	5	46.54
PINE	0	1,437	1,199	186	51	83.48
ROARING CREEK	0	983	778	188	17	79.17
SCOTT	0	522	276	185	61	52.97
SOUTH CENTRE	0	443	220	149	75	49.63
STILLWATER	0	288	165	110	13	57.37
SUGARLOAF	0	1,695	1,348	291	56	79.50

*

Non-MS4 Regulated Municipalities

