

Cumberland County Forest Buffer Summary

100 ft. Width

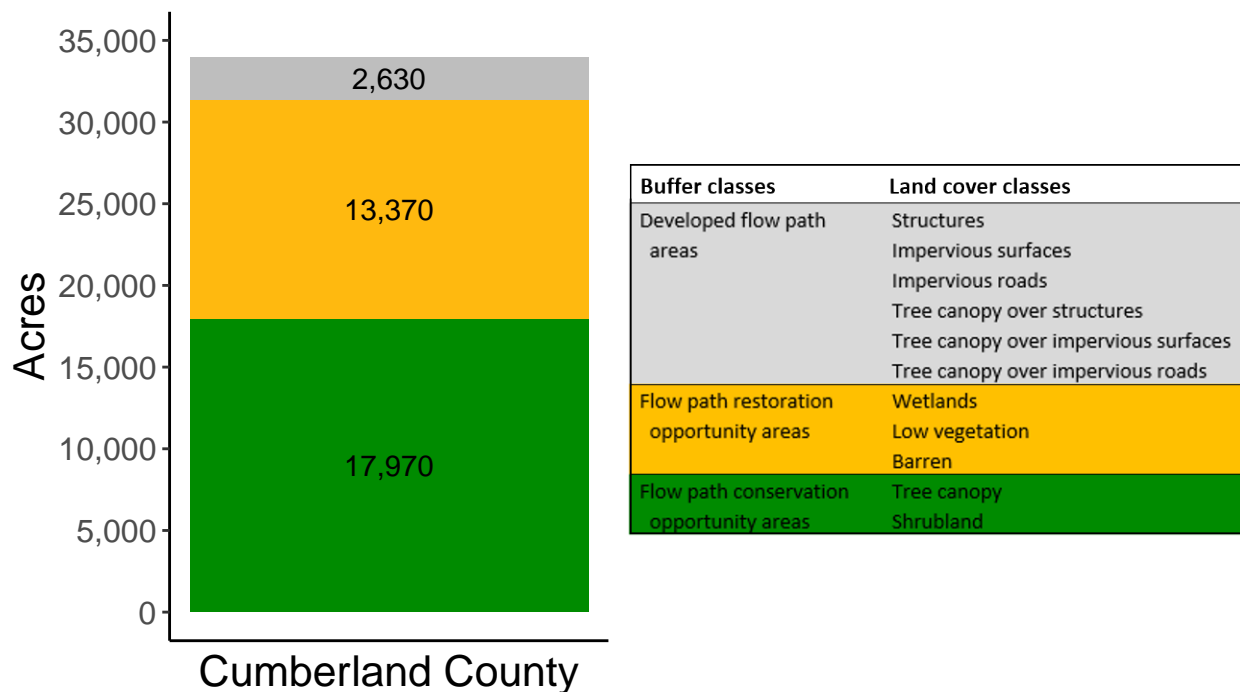
Created by: Chesapeake Conservancy, February 2019

Data Description

The buffer analysis is based on two Geospatial Information Systems (GIS) datasets created by Chesapeake Conservancy and partners. The enhanced flow path water network dataset was derived from 2006 & 2008 PAMAP Statewide digital elevation models (DEMs), developed from Lidar data. Channel heads were assigned where upslope drainage accumulation reached 60 acres. Flow paths were widened based on US Geological Survey regional curves and enhanced with high-resolution land cover. The high-resolution land cover dataset was derived from 2013 National Agriculture Inventory Program imagery. Both datasets have a spatial resolution of 1 meter. Pixels from the high-resolution land cover dataset within 35 ft. and 100 ft. distances of the enhanced flow path water network were considered in the buffer analysis. For more information and to download datasets, go to www.ChesapeakeConservancy.org and search for “data downloader.”

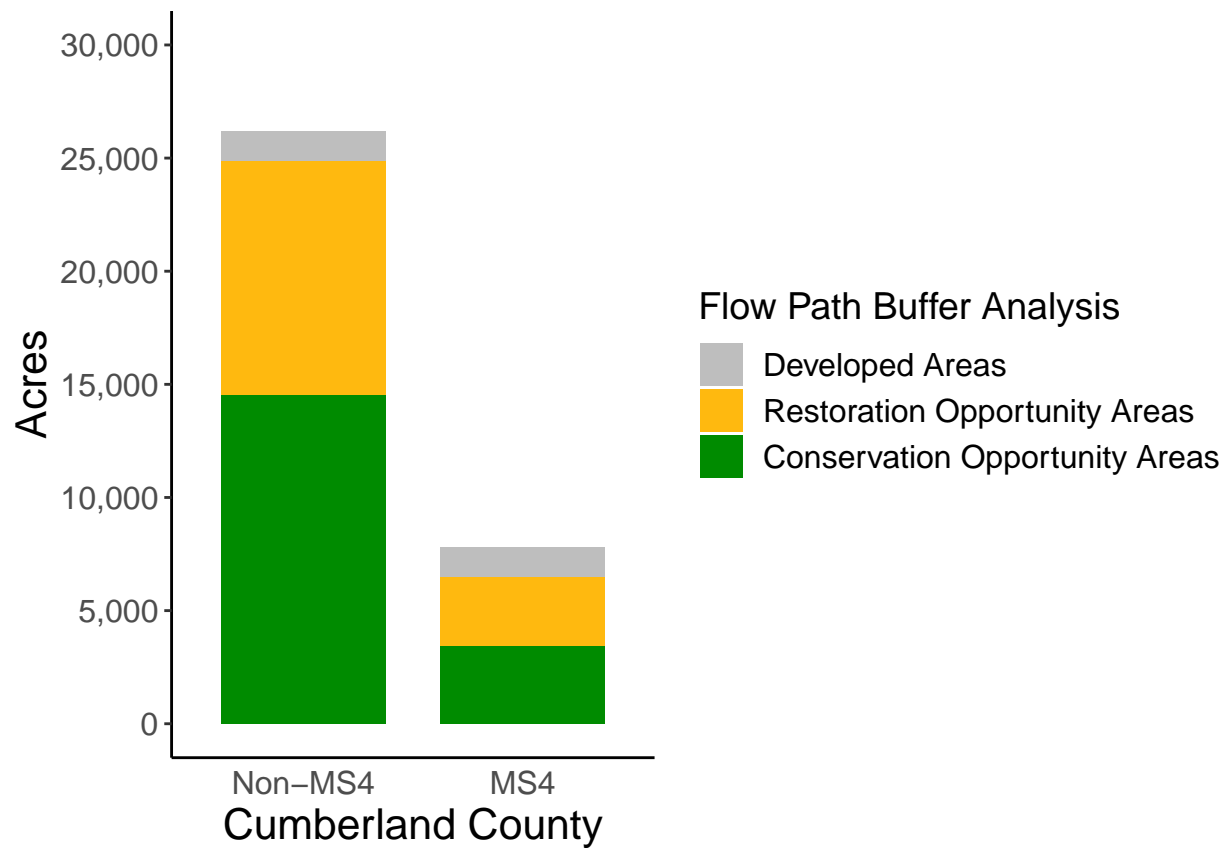
County Summary

Cumberland County contains a total of 13,370 acres of flow path restoration opportunity area, and has 52.9% forest buffer coverage. Cumberland County has complete buffer data coverage.



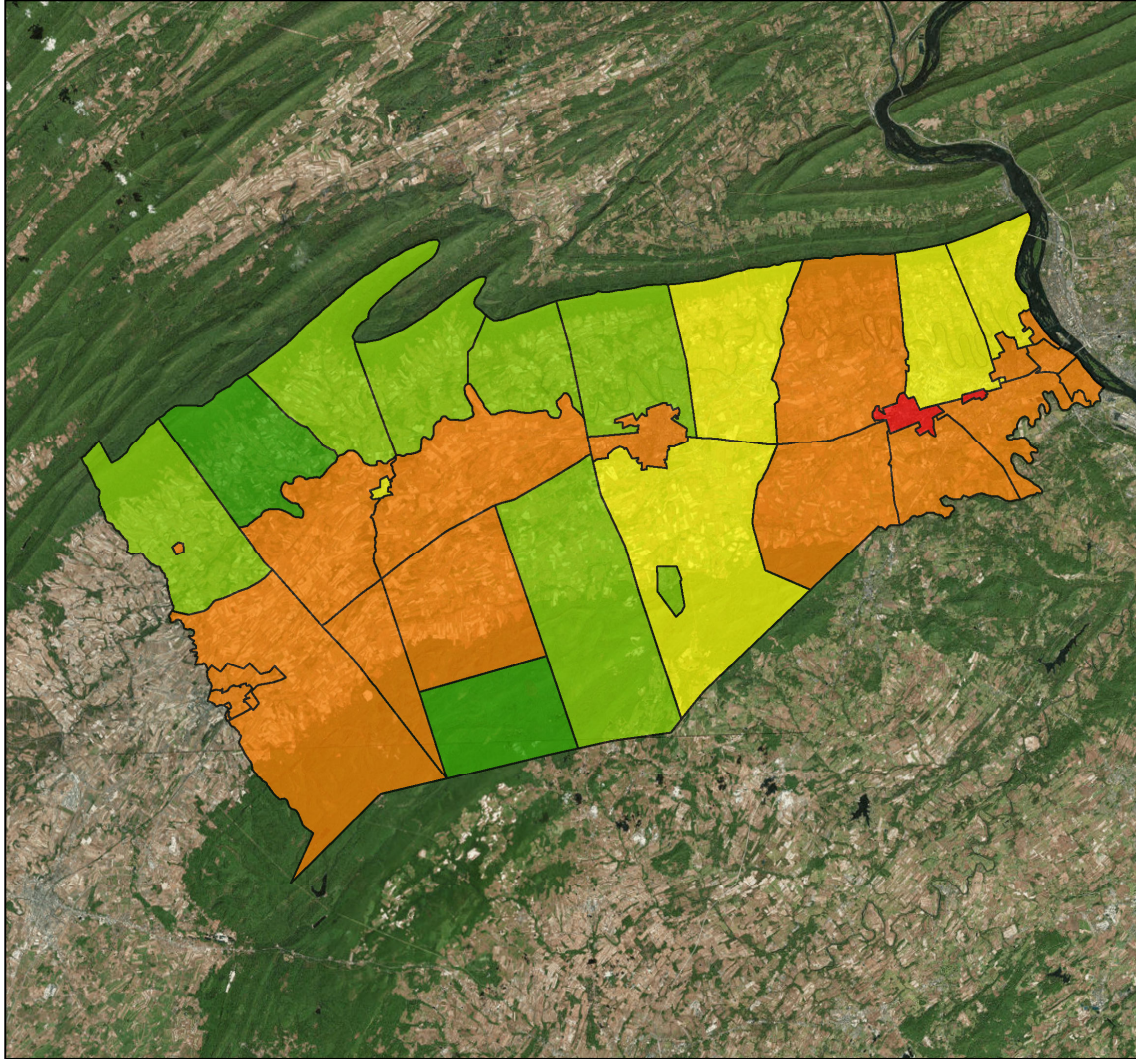
Municipal Separate Storm Sewer System (MS4) Regulated Municipality Summary

Totals by Municipalities

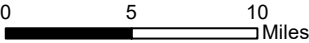


Averages for MS4 and Non-MS4 Municipalities

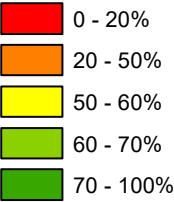
	Non-MS4	MS4
Conservation Opportunity Areas (Acres)	727	264
Restoration Opportunity Areas (Acres)	516	234
Developed Areas (Acres)	65	102
Total Buffer Acres	1308	600
Percent Forest Buffer Coverage (%)	54.27	36.09



Cumberland County Municipalities

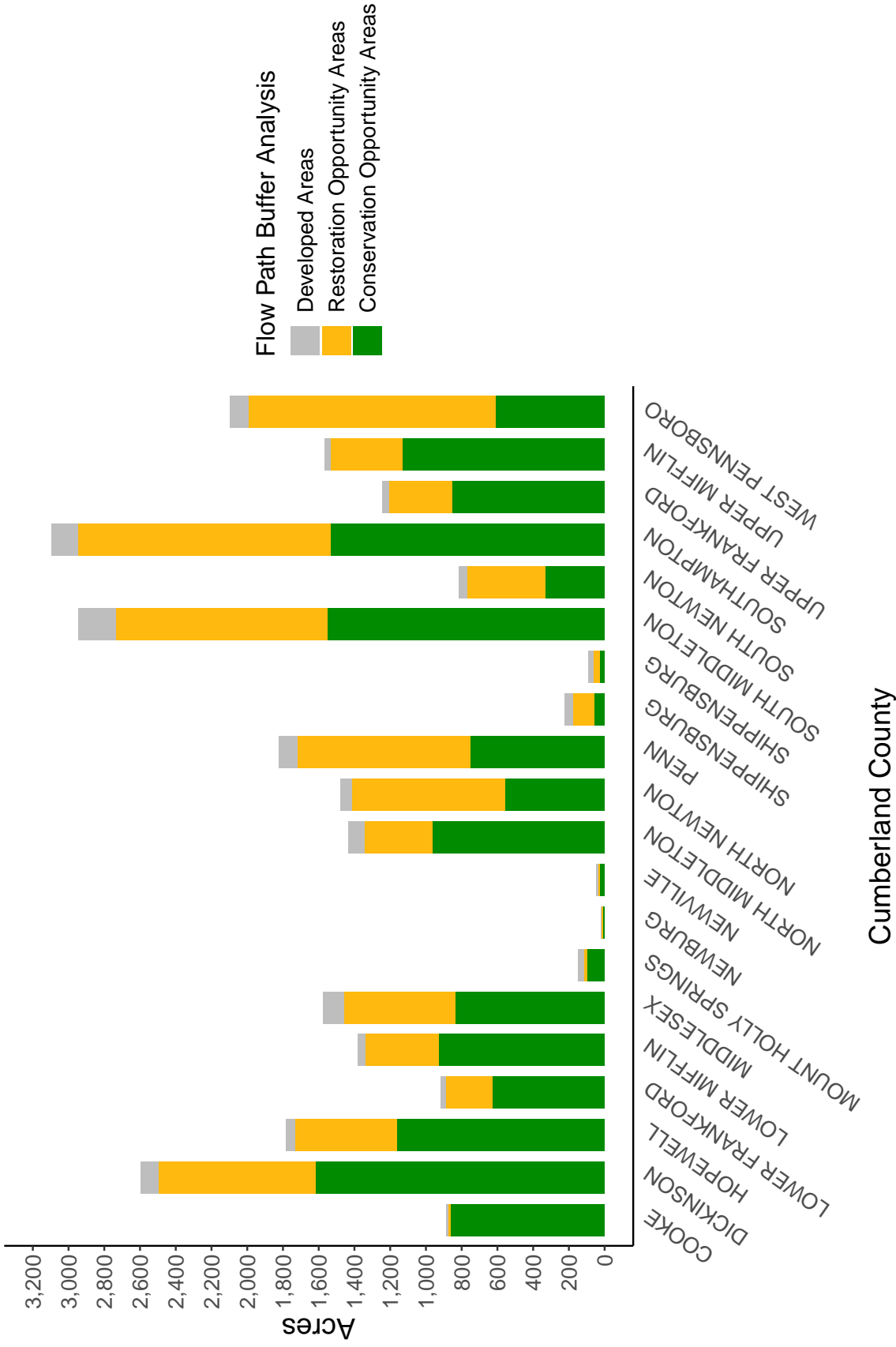


100' Buffer Coverage (%)



Municipality	MS4	Total 100 ft buffer acres	Conservation opportunity areas (acres)	Restoration opportunity areas (acres)	Developed areas (acres)	Percent forest buffer coverage (%)
COOKE	0	885	863	10	12	97.58
DICKINSON	0	2,596	1,619	877	101	62.35
HOPEWELL	0	1,786	1,161	572	53	65.00
LOWER FRANKFORD	0	915	626	263	27	68.33
LOWER MIFFLIN	0	1,382	927	414	40	67.10
MIDDLESEX	0	1,575	836	620	119	53.08
MOUNT HOLLY SPRINGS	0	148	96	21	31	64.69
NEWBURG	0	20	8	10	3	39.11
NEWVILLE	0	48	26	11	11	54.51
NORTH MIDDLETON	0	1,432	965	377	90	67.42
NORTH NEWTON	0	1,477	557	857	63	37.70
PENN	0	1,825	751	970	103	41.18
SHIPPENSBURG	0	222	58	118	46	26.29
SHIPPENSBURG	0	91	26	35	30	27.93
SOUTH MIDDLETON	0	2,945	1,554	1,180	211	52.77
SOUTH NEWTON	0	816	333	436	47	40.81
SOUTHAMPTON	0	3,097	1,533	1,415	149	49.50
UPPER FRANKFORD	0	1,245	854	351	39	68.60
UPPER MIFFLIN	0	1,564	1,133	400	31	72.45
WEST PENNSBORO	0	2,099	610	1,384	104	29.08
CAMP HILL	1	103	38	21	45	36.75
CARLISLE	1	365	88	127	151	24.10
EAST PENNSBORO	1	733	426	125	182	58.19
HAMPDEN	1	1,098	591	260	247	53.84
LEMOYNE	1	84	28	10	45	33.76
LOWER ALLEN	1	713	335	201	178	46.93
MECHANICSBURG	1	134	21	66	46	15.80
MONROE	1	1,566	524	941	100	33.48
NEW CUMBERLAND	1	101	38	15	48	37.82
SHIREMANSTOWN	1	0	0	0	0	0.00
SILVER SPRING	1	2,062	959	948	155	46.52
UPPER ALLEN	1	783	362	324	97	46.28
WORMLEYSBURG	1	59	21	11	27	35.75

Non-MS4 Regulated Municipalities



MS4 Regulated Municipalities

