

Franklin County Forest Buffer Summary

100 ft. Width

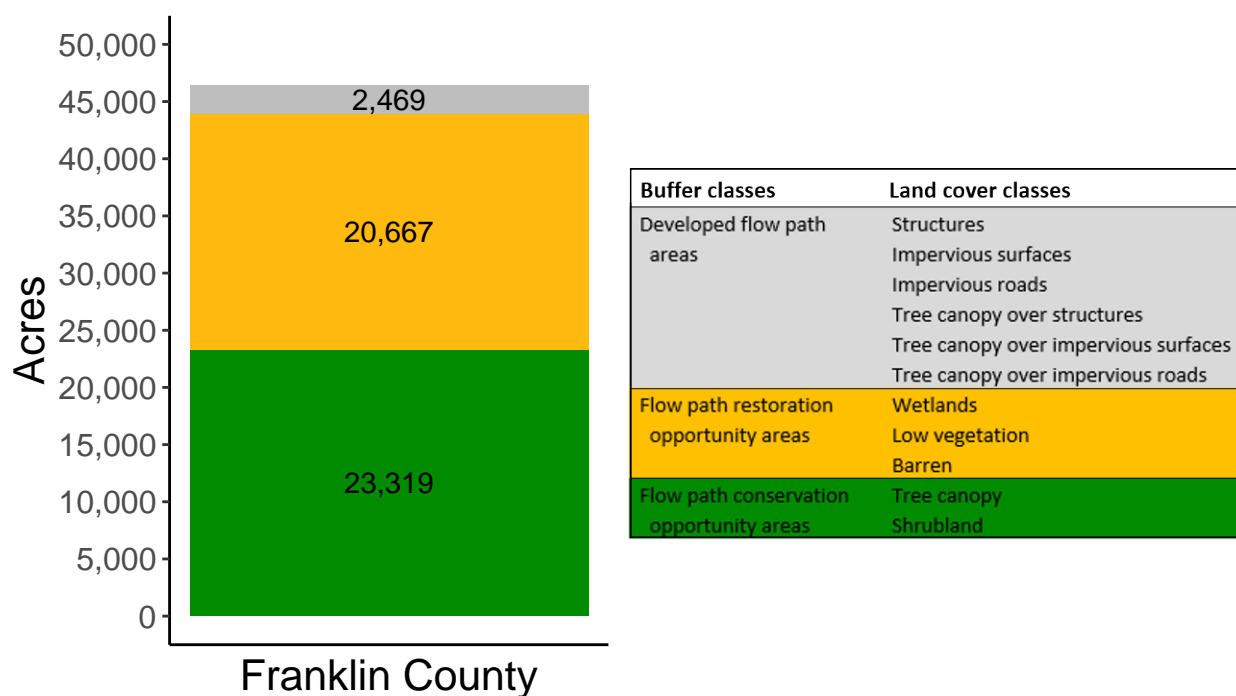
Created by: Chesapeake Conservancy, February 2019

Data Description

The buffer analysis is based on two Geospatial Information Systems (GIS) datasets created by Chesapeake Conservancy and partners. The enhanced flow path water network dataset was derived from 2006 & 2008 PAMAP Statewide digital elevation models (DEMs), developed from Lidar data. Channel heads were assigned where upslope drainage accumulation reached 60 acres. Flow paths were widened based on US Geological Survey regional curves and enhanced with high-resolution land cover. The high-resolution land cover dataset was derived from 2013 National Agriculture Inventory Program imagery. Both datasets have a spatial resolution of 1 meter. Pixels from the high-resolution land cover dataset within 35 ft. and 100 ft. distances of the enhanced flow path water network were considered in the buffer analysis. For more information and to download datasets, go to www.ChesapeakeConservancy.org and search for “data downloader.”

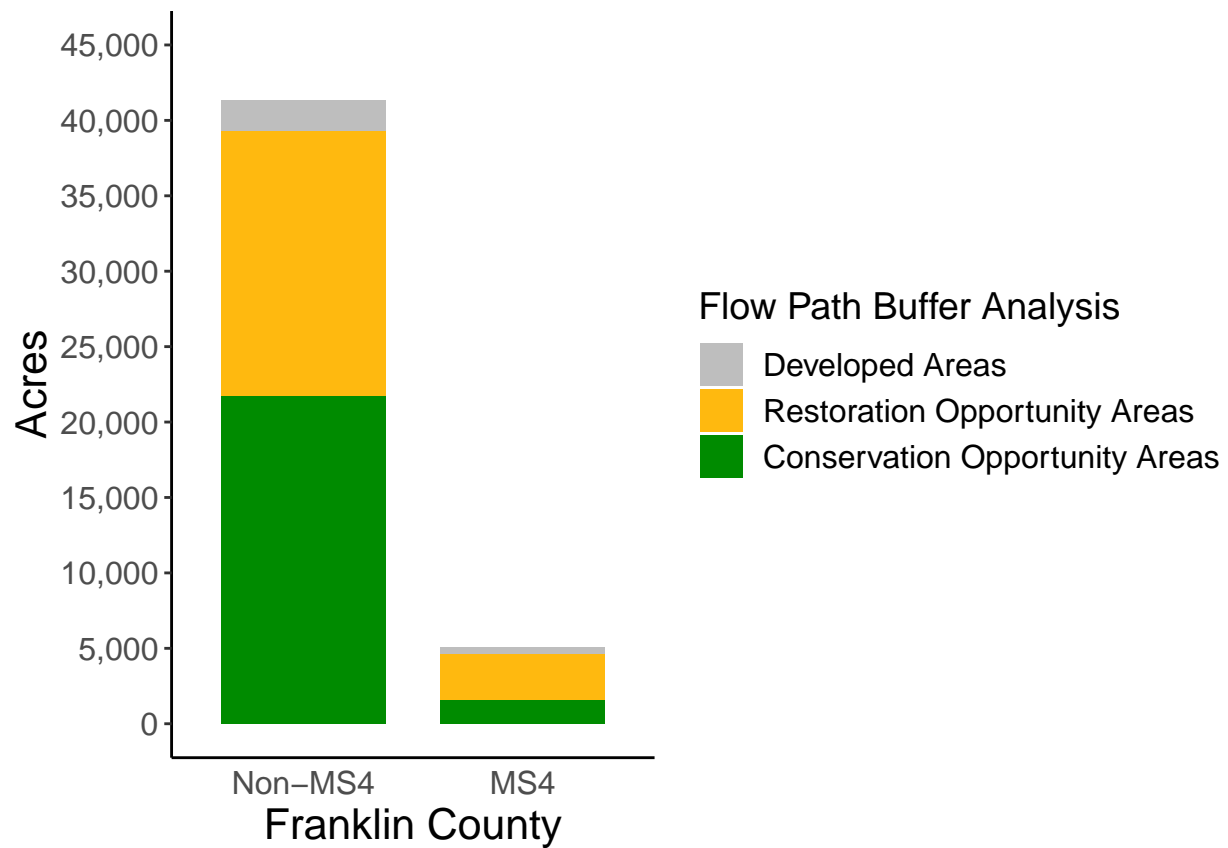
County Summary

Franklin County contains a total of 20,667 acres of flow path restoration opportunity area, and has 50.2% forest buffer coverage. Franklin County has complete buffer data coverage.



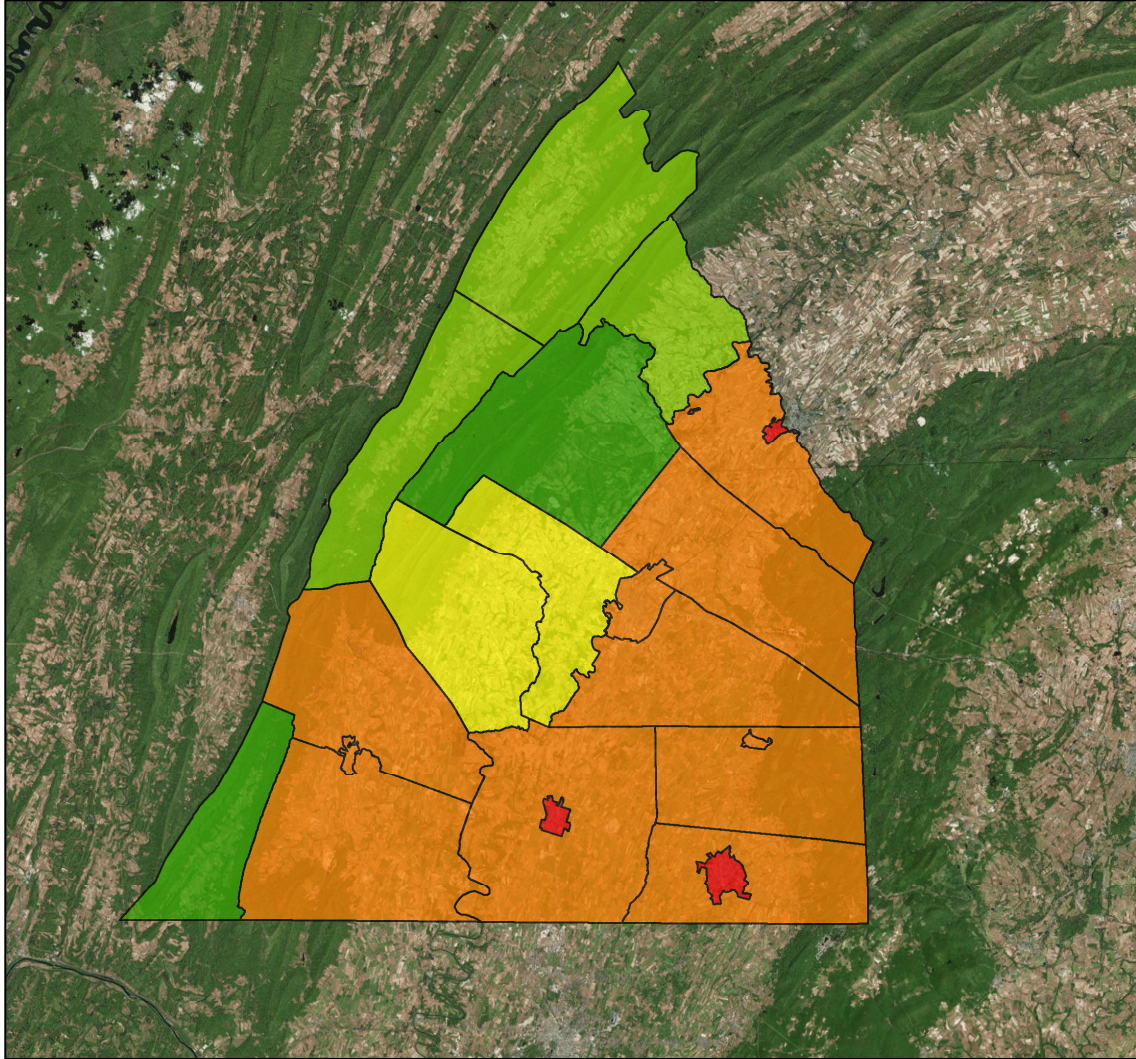
Municipal Separate Storm Sewer System (MS4) Regulated Municipality Summary

Totals by Municipalities

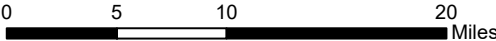


Averages for MS4 and Non-MS4 Municipalities

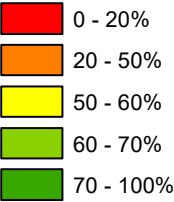
	Non-MS4	MS4
Conservation Opportunity Areas (Acres)	1145	780
Restoration Opportunity Areas (Acres)	925	1550
Developed Areas (Acres)	106	227
Total Buffer Acres	2176	2556
Percent Forest Buffer Coverage (%)	44.53	27.75



Franklin County Municipalities

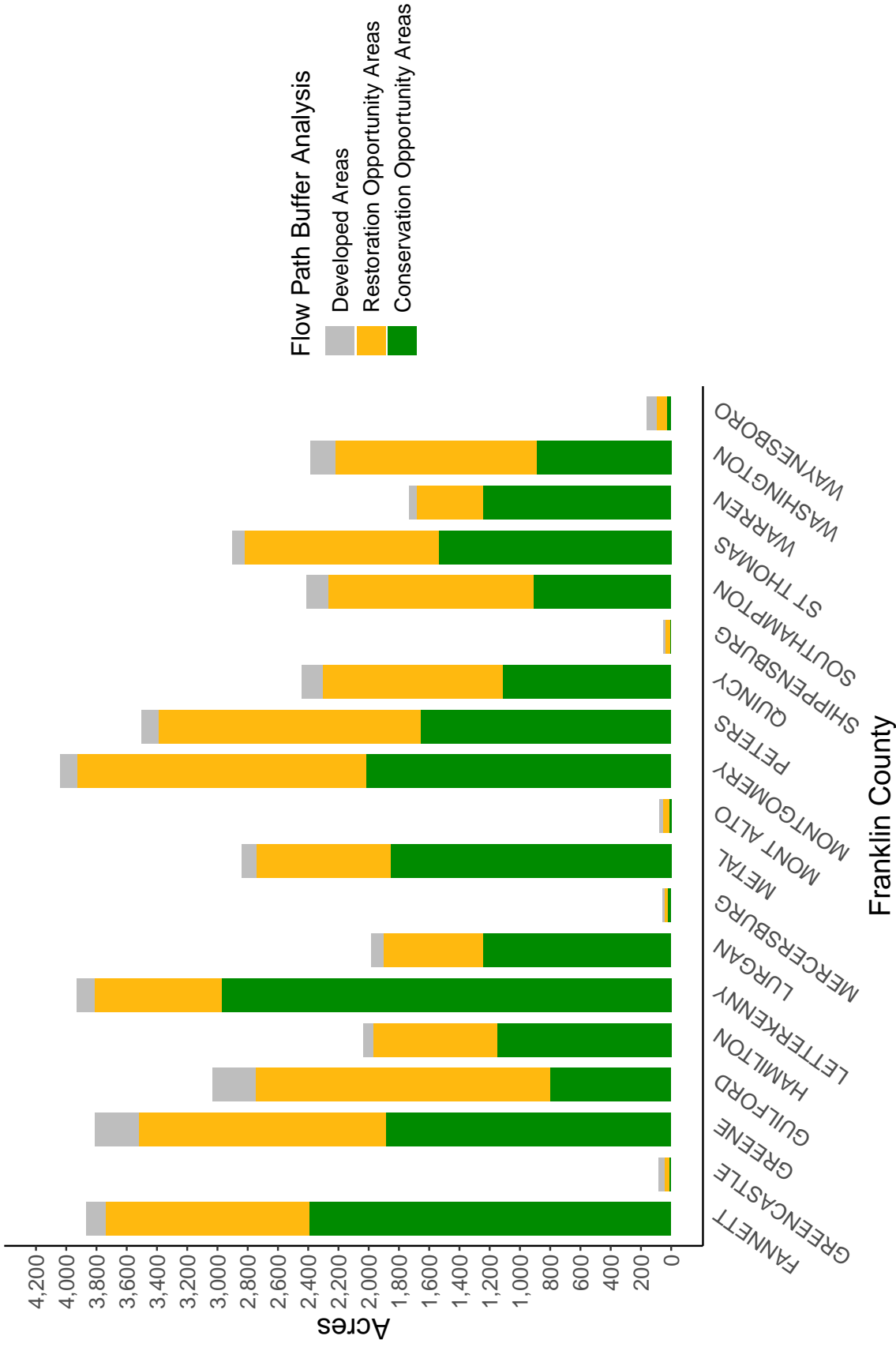


100' Buffer Coverage (%)



Municipality	MS4	Total 100 ft buffer acres	Conservation opportunity areas (acres)	Restoration opportunity areas (acres)	Developed areas (acres)	Percent forest buffer coverage (%)
FANNETT	0	3,869	2,390	1,351	128	61.79
GREENCASTLE	0	82	13	31	38	15.96
GREENE	0	3,811	1,887	1,633	291	49.51
GUILFORD	0	3,033	803	1,943	287	26.47
HAMILTON	0	2,035	1,149	821	65	56.47
LETTERKENNY	0	3,932	2,971	841	120	75.55
LURGAN	0	1,983	1,245	657	82	62.77
MERCERSBURG	0	59	20	25	14	33.42
METAL	0	2,837	1,854	887	96	65.36
MONT ALTO	0	76	16	37	23	21.03
MONTGOMERY	0	4,038	2,017	1,909	113	49.94
PETERS	0	3,503	1,659	1,733	111	47.35
QUINCY	0	2,440	1,116	1,188	136	45.74
SHIPPENSBURG	0	50	9	30	12	16.98
SOUTHAMPTON	0	2,414	912	1,359	142	37.80
ST THOMAS	0	2,899	1,536	1,284	79	52.99
WARREN	0	1,732	1,246	438	49	71.90
WASHINGTON	0	2,386	889	1,331	166	37.25
WAYNESBORO	0	164	29	70	64	17.74
ANTRIM	1	4,619	1,440	2,911	268	31.17
CHAMBERSBURG	1	494	120	189	185	24.33

Non-MS4 Regulated Municipalities



MS4 Regulated Municipalities

