

# Fulton County Forest Buffer Summary

## 100 ft. Width

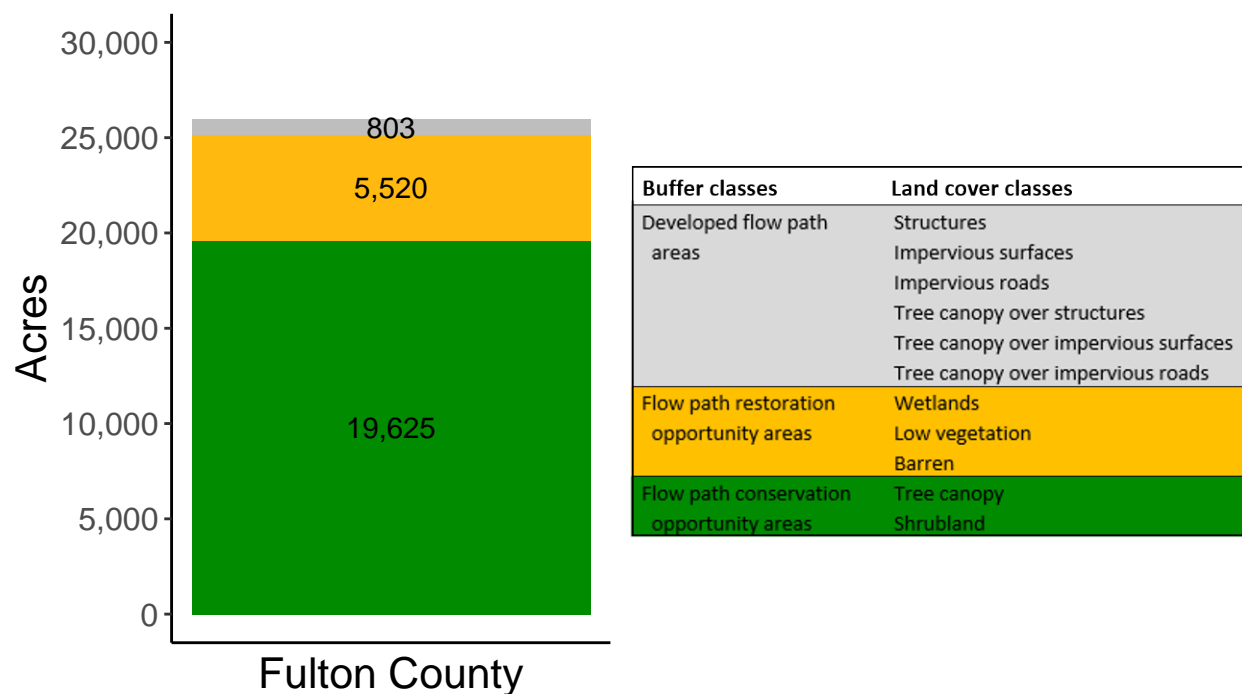
*Created by: Chesapeake Conservancy, February 2019*

### Data Description

The buffer analysis is based on two Geospatial Information Systems (GIS) datasets created by Chesapeake Conservancy and partners. The enhanced flow path water network dataset was derived from 2006 & 2008 PAMAP Statewide digital elevation models (DEMs), developed from Lidar data. Channel heads were assigned where upslope drainage accumulation reached 60 acres. Flow paths were widened based on US Geological Survey regional curves and enhanced with high-resolution land cover. The high-resolution land cover dataset was derived from 2013 National Agriculture Inventory Program imagery. Both datasets have a spatial resolution of 1 meter. Pixels from the high-resolution land cover dataset within 35 ft. and 100 ft. distances of the enhanced flow path water network were considered in the buffer analysis. For more information and to download datasets, go to [www.ChesapeakeConservancy.org](http://www.ChesapeakeConservancy.org) and search for “data downloader.”

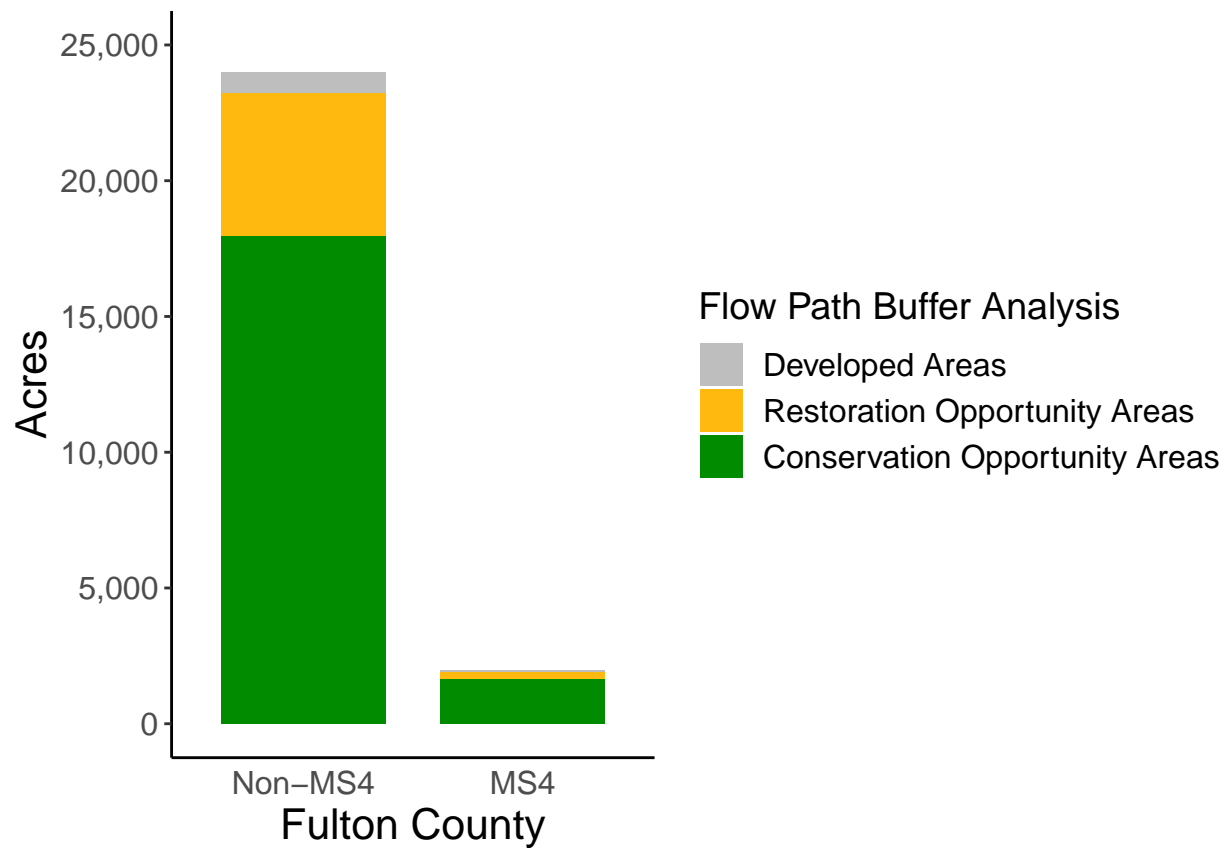
### County Summary

Fulton County contains a total of 5,520 acres of flow path restoration opportunity area, and has 75.63% forest buffer coverage. Fulton County has complete buffer data coverage.



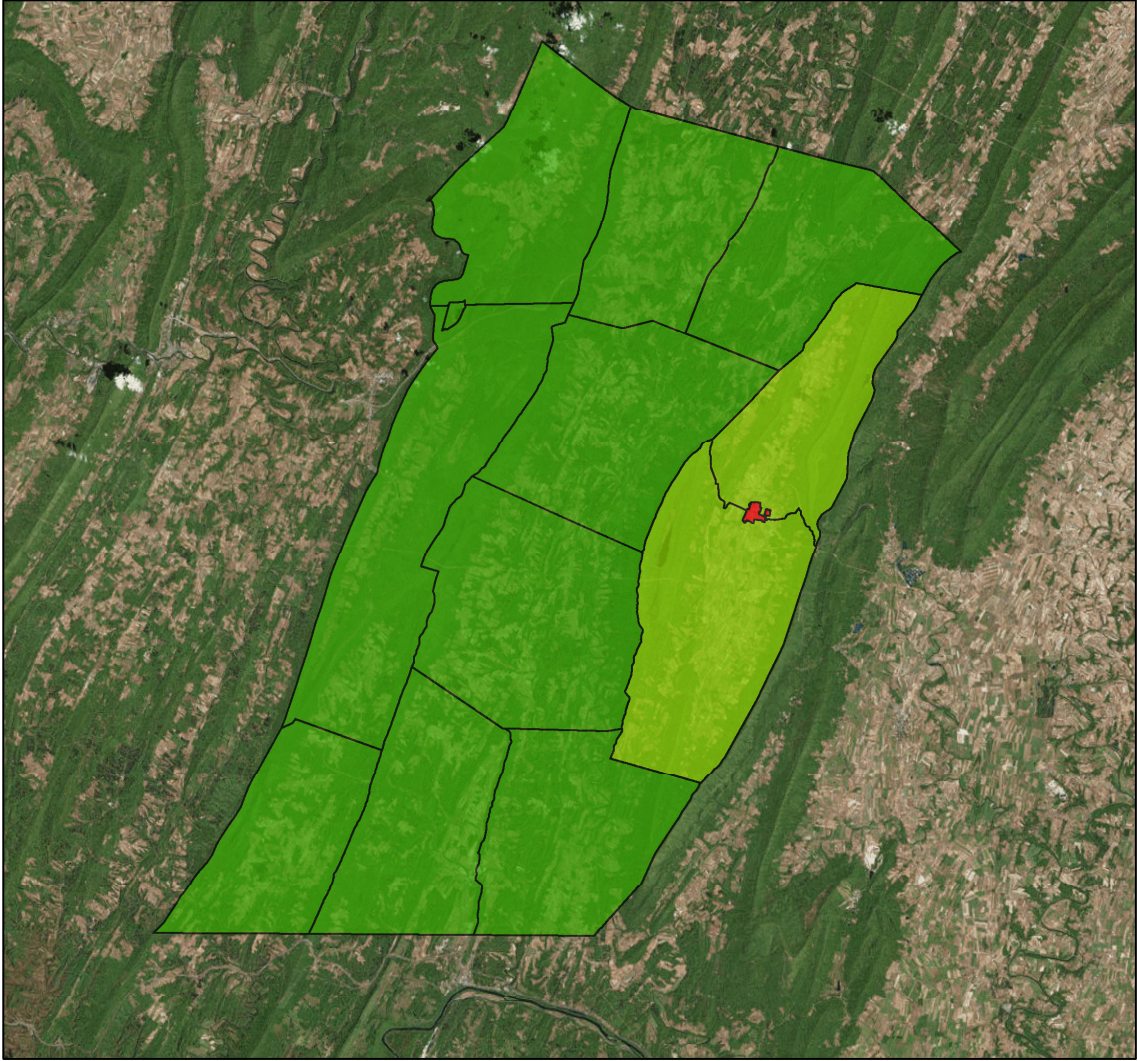
## Municipal Separate Storm Sewer System (MS4) Regulated Municipality Summary

### Totals by Municipalities



### Averages for MS4 and Non-MS4 Municipalities

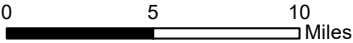
	Non-MS4	MS4
Conservation Opportunity Areas (Acres)	1498	1652
Restoration Opportunity Areas (Acres)	438	263
Developed Areas (Acres)	64	39
Total Buffer Acres	2000	1954
Percent Forest Buffer Coverage (%)	70.83	84.56



**Fulton County Municipalities**

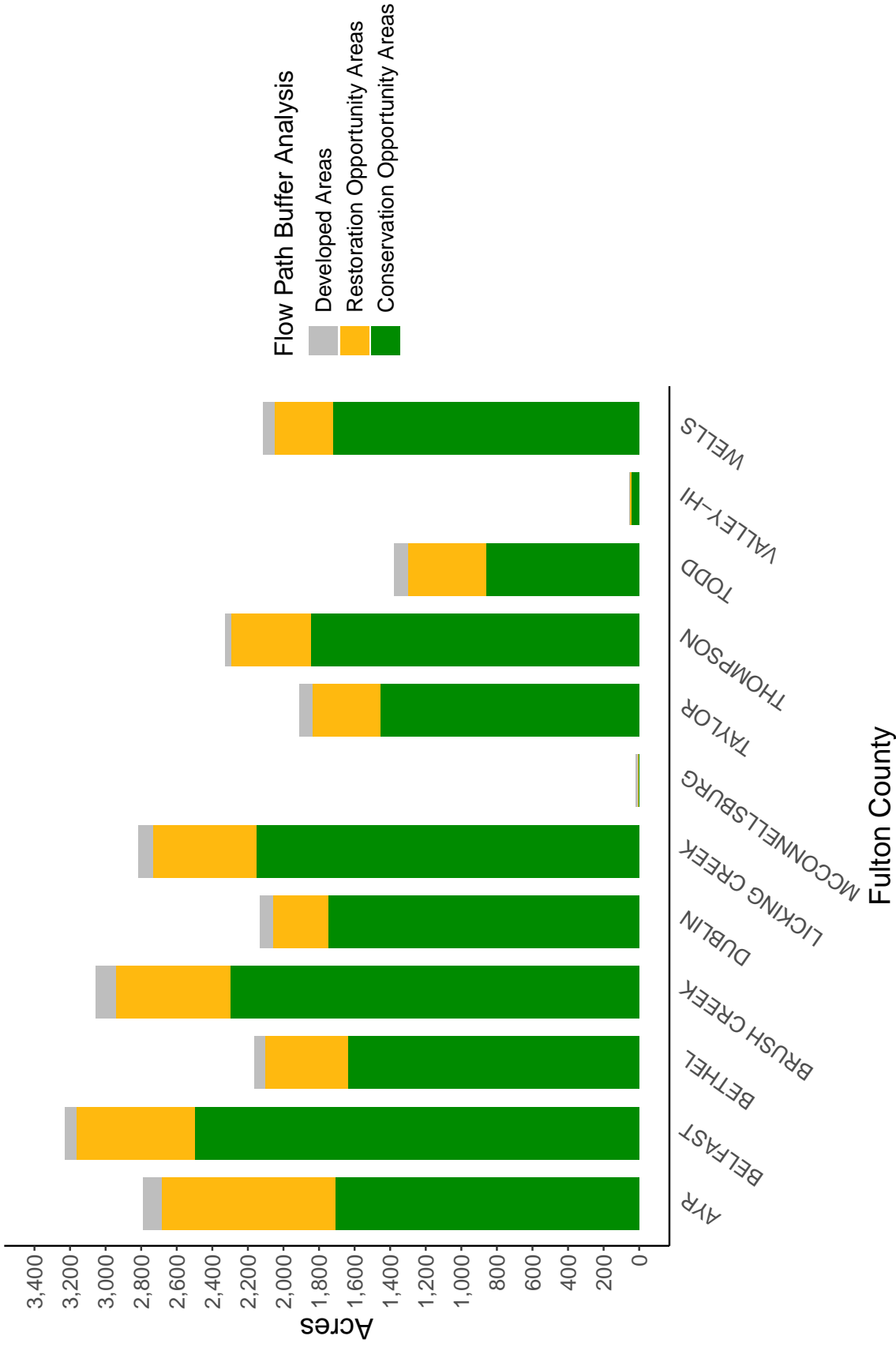
**100' Buffer Coverage (%)**

- 0 - 20%
- 20 - 50%
- 50 - 60%
- 60 - 70%
- 70 - 100%



Municipality	MS4	Total 100 ft buffer acres	Conservation opportunity areas (acres)	Restoration opportunity areas (acres)	Developed areas (acres)	Percent forest buffer coverage (%)
AYR	0	2,791	1,706	980	105	61.13
BELFAST	0	3,228	2,500	664	64	77.44
BETHEL	0	2,163	1,636	465	62	75.64
BRUSH CREEK	0	3,057	2,297	646	114	75.14
DUBLIN	0	2,134	1,749	310	75	81.93
LICKING CREEK	0	2,818	2,154	580	84	76.43
MCCONNELLSBURG	0	22	4	6	12	17.51
TAYLOR	0	1,908	1,454	381	74	76.18
THOMPSON	0	2,327	1,847	447	33	79.36
TODD	0	1,377	860	442	76	62.43
VALLEY-HI	0	53	45	6	2	85.34
WELLS	0	2,113	1,720	330	63	81.41
UNION	1	1,954	1,652	263	39	84.56

Non-MS4 Regulated Municipalities



MS4 Regulated Municipalities

