

Indiana County Forest Buffer Summary

100 ft. Width

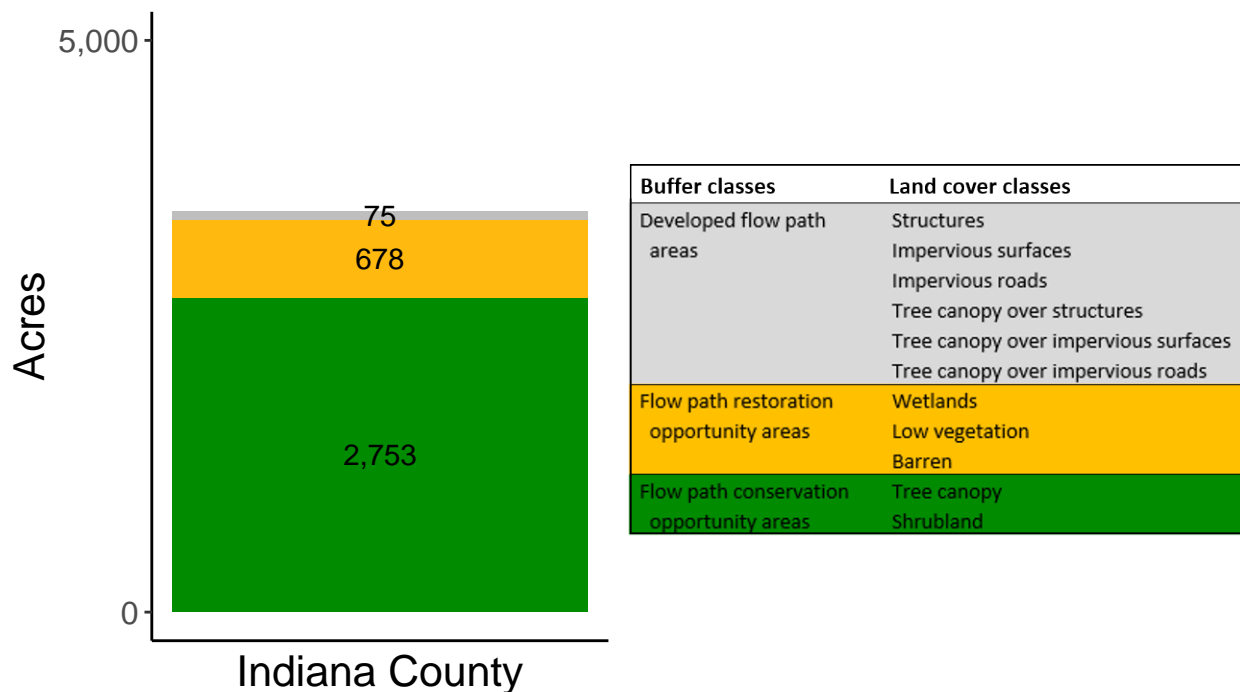
Created by: Chesapeake Conservancy, February 2019

Data Description

The buffer analysis is based on two Geospatial Information Systems (GIS) datasets created by Chesapeake Conservancy and partners. The enhanced flow path water network dataset was derived from 2006 & 2008 PAMAP Statewide digital elevation models (DEMs), developed from Lidar data. Channel heads were assigned where upslope drainage accumulation reached 60 acres. Flow paths were widened based on US Geological Survey regional curves and enhanced with high-resolution land cover. The high-resolution land cover dataset was derived from 2013 National Agriculture Inventory Program imagery. Both datasets have a spatial resolution of 1 meter. Pixels from the high-resolution land cover dataset within 35 ft. and 100 ft. distances of the enhanced flow path water network were considered in the buffer analysis. For more information and to download datasets, go to www.ChesapeakeConservancy.org and search for “data downloader.”

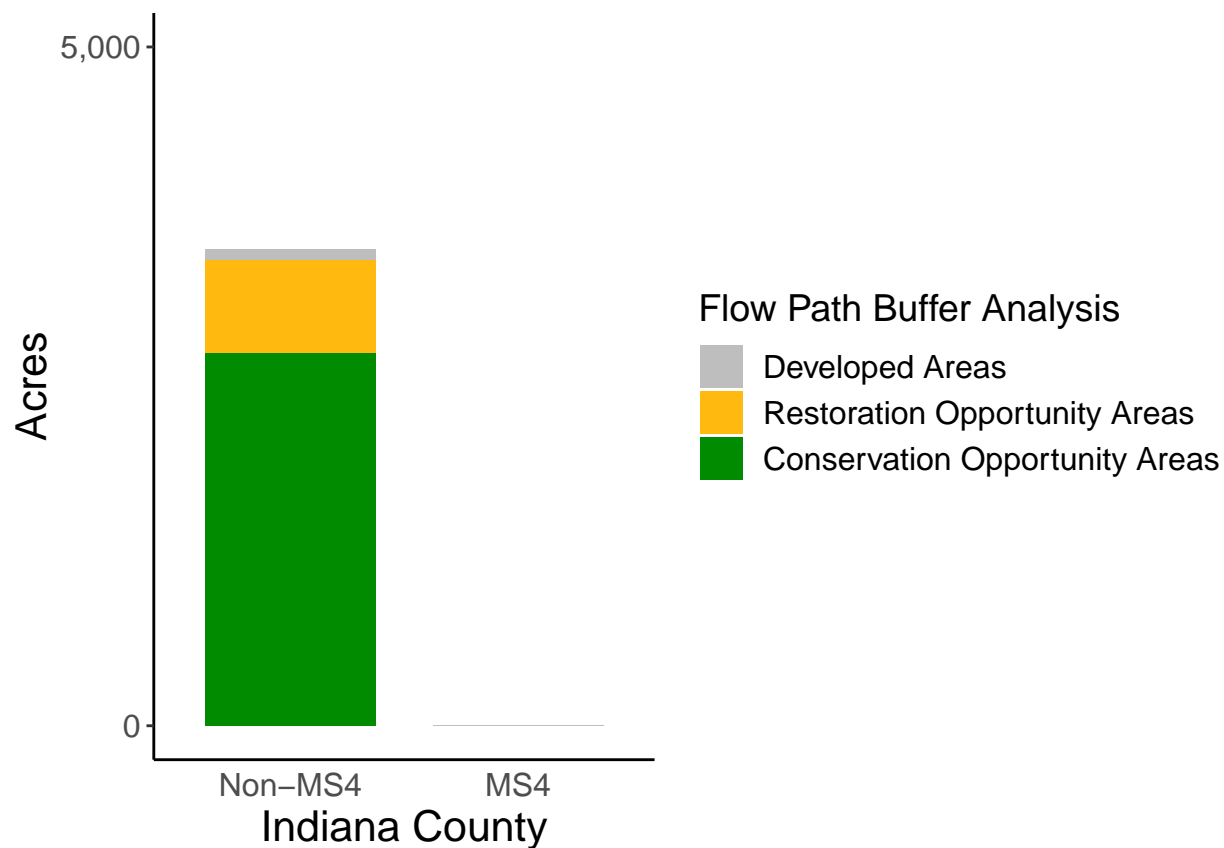
County Summary

Indiana County contains a total of 678 acres of flow path restoration opportunity area, and has 78.53% forest buffer coverage. Indiana County has incomplete buffer data coverage.



Municipal Separate Storm Sewer System (MS4) Regulated Municipality Summary

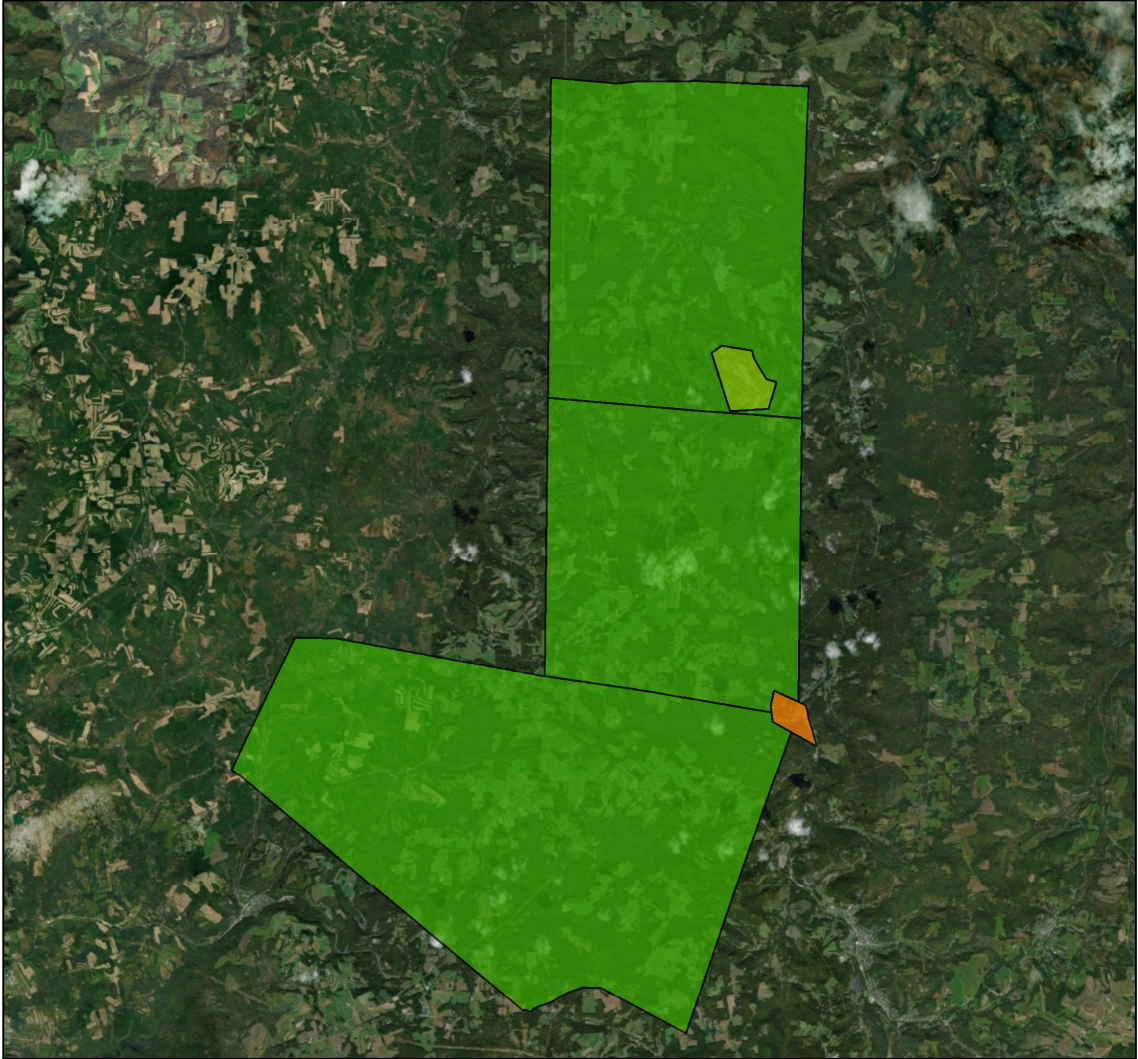
Totals by Municipalities



Indiana County does not contain any MS4 Municipalities.

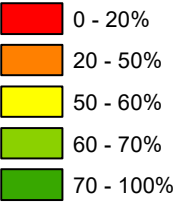
Averages for MS4 and Non-MS4 Municipalities

	Non-MS4	MS4
Conservation Opportunity Areas (Acres)	551	0
Restoration Opportunity Areas (Acres)	136	0
Developed Areas (Acres)	15	0
Total Buffer Acres	701	0
Percent Forest Buffer Coverage (%)	69.95	0.00



Indiana County Municipalities

100' Buffer Coverage (%)



Municipality	MS4	Total 100 ft buffer acres	Conservation opportunity areas (acres)	Restoration opportunity areas (acres)	Developed areas (acres)	Percent forest buffer coverage (%)
BANKS	0	1,172	993	170	10	84.67
CHERRY TREE	0	49	22	19	9	43.54
GLEN CAMPBELL	0	101	69	28	3	68.74
GREEN	0	749	571	158	21	76.18
MONTGOMERY	0	1,434	1,099	303	32	76.62

Non-MS4 Regulated Municipalities

