

# Juniata County Forest Buffer Summary

## 100 ft. Width

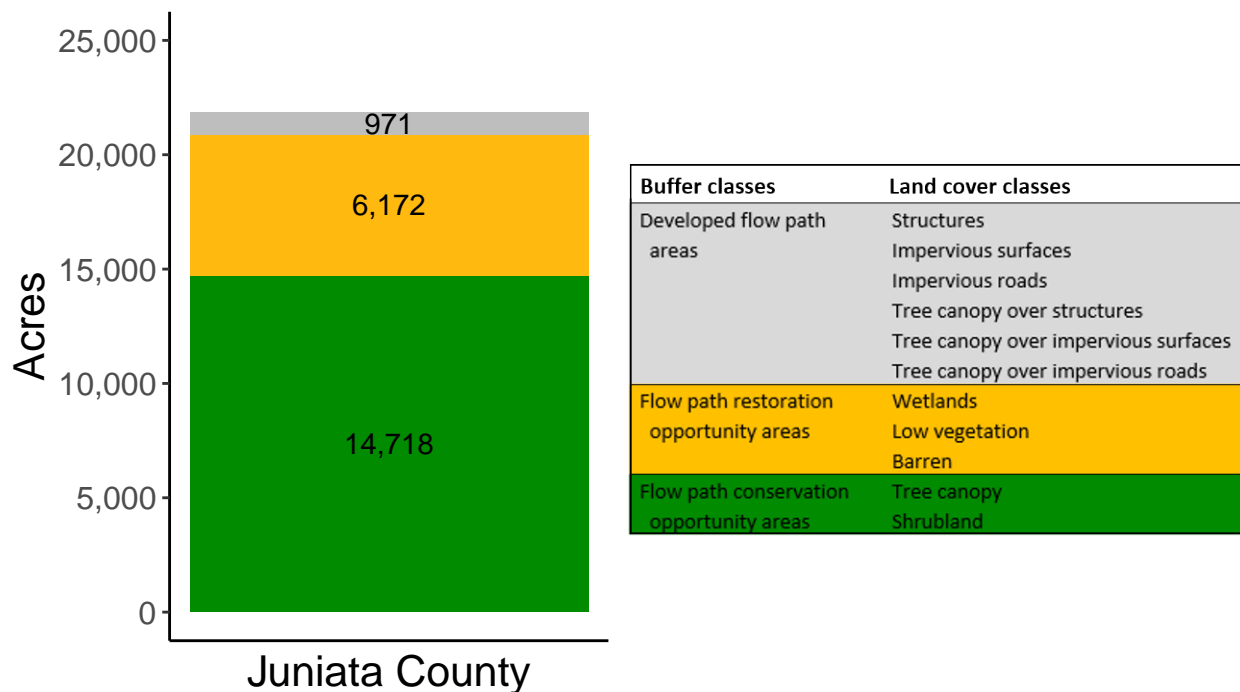
*Created by: Chesapeake Conservancy, February 2019*

### Data Description

The buffer analysis is based on two Geospatial Information Systems (GIS) datasets created by Chesapeake Conservancy and partners. The enhanced flow path water network dataset was derived from 2006 & 2008 PAMAP Statewide digital elevation models (DEMs), developed from Lidar data. Channel heads were assigned where upslope drainage accumulation reached 60 acres. Flow paths were widened based on US Geological Survey regional curves and enhanced with high-resolution land cover. The high-resolution land cover dataset was derived from 2013 National Agriculture Inventory Program imagery. Both datasets have a spatial resolution of 1 meter. Pixels from the high-resolution land cover dataset within 35 ft. and 100 ft. distances of the enhanced flow path water network were considered in the buffer analysis. For more information and to download datasets, go to [www.ChesapeakeConservancy.org](http://www.ChesapeakeConservancy.org) and search for “data downloader.”

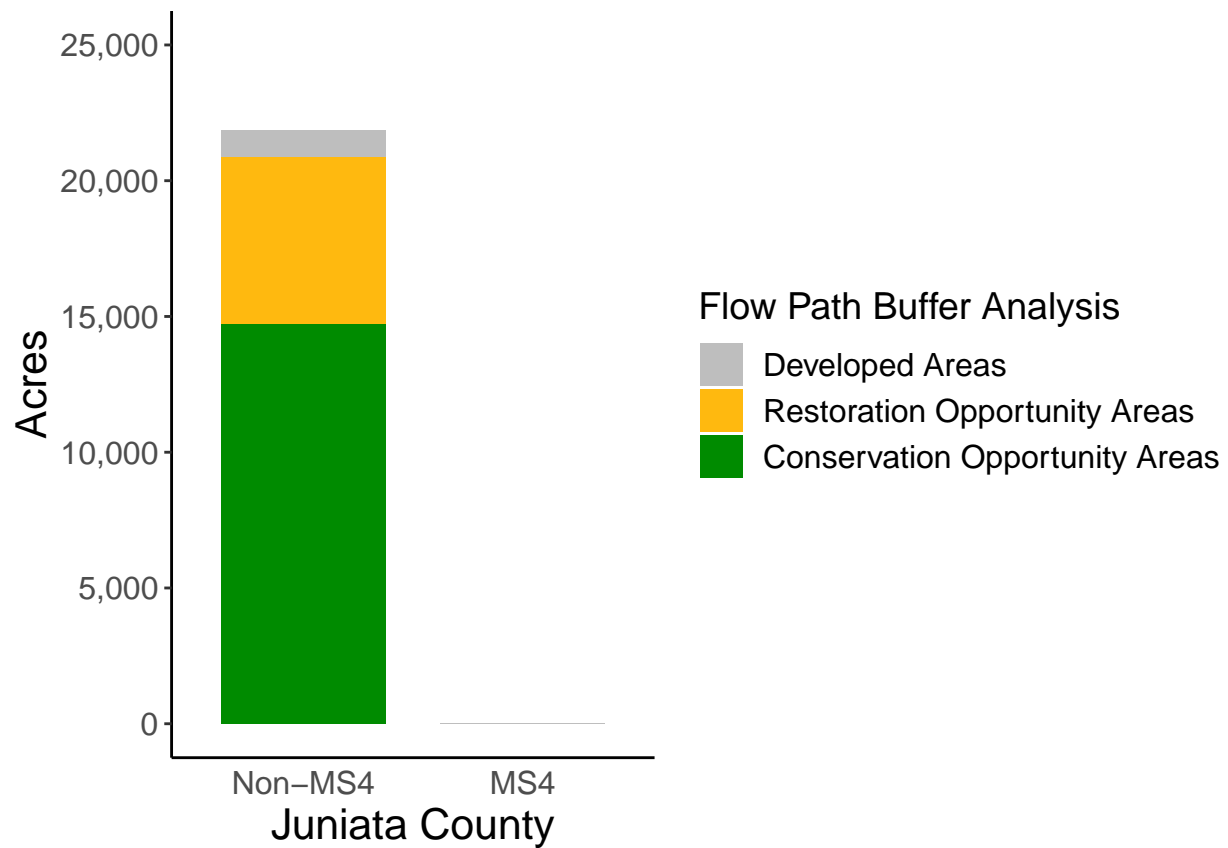
### County Summary

Juniata County contains a total of 6,172 acres of flow path restoration opportunity area, and has 67.33% forest buffer coverage. Juniata County has complete buffer data coverage.



# Municipal Separate Storm Sewer System (MS4) Regulated Municipality Summary

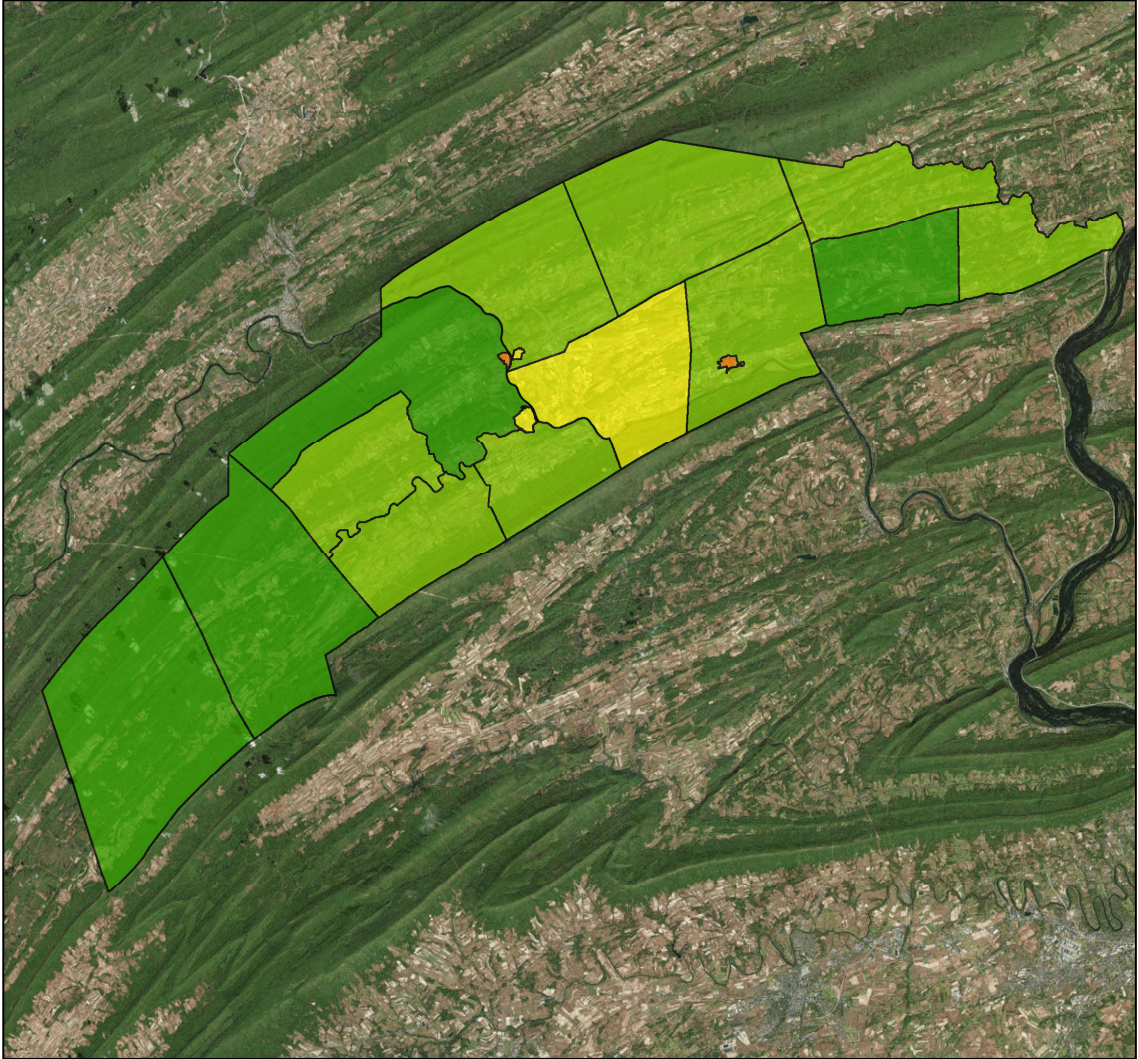
## Totals by Municipalities



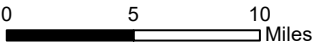
Juniata County does not contain any MS4 Municipalities.

## Averages for MS4 and Non-MS4 Municipalities

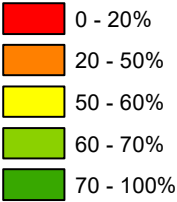
	Non-MS4	MS4
Conservation Opportunity Areas (Acres)	866	0
Restoration Opportunity Areas (Acres)	363	0
Developed Areas (Acres)	57	0
Total Buffer Acres	1286	0
Percent Forest Buffer Coverage (%)	60.97	0.00



**Juniata County Municipalities**



**100' Buffer Coverage (%)**



Municipality	MS4	Total 100 ft buffer acres	Conservation opportunity areas (acres)	Restoration opportunity areas (acres)	Developed areas (acres)	Percent forest buffer coverage (%)
BEALE	0	1,224	833	361	29	68.09
DELAWARE	0	1,695	1,073	503	119	63.31
FAYETTE	0	2,306	1,403	789	113	60.86
FERMANAGH	0	1,763	1,201	461	101	68.11
GREENWOOD	0	1,133	877	222	34	77.41
LACK	0	2,712	2,081	575	56	76.73
MIFFLIN	0	27	7	9	12	25.51
MIFFLINTOWN	0	13	7	2	3	55.94
MILFORD	0	2,046	1,478	463	105	72.24
MONROE	0	1,071	663	345	63	61.86
PORT ROYAL	0	22	12	8	2	55.87
SPRUCE HILL	0	1,338	843	459	36	62.99
SUSQUEHANNA	0	1,021	682	292	48	66.75
THOMPSONTOWN	0	35	11	11	13	31.41
TURBETT	0	1,099	684	368	47	62.25
TUSCARORA	0	2,678	1,952	657	69	72.89
WALKER	0	1,678	911	648	119	54.29

Non-MS4 Regulated Municipalities

