

Lebanon County Forest Buffer Summary

100 ft. Width

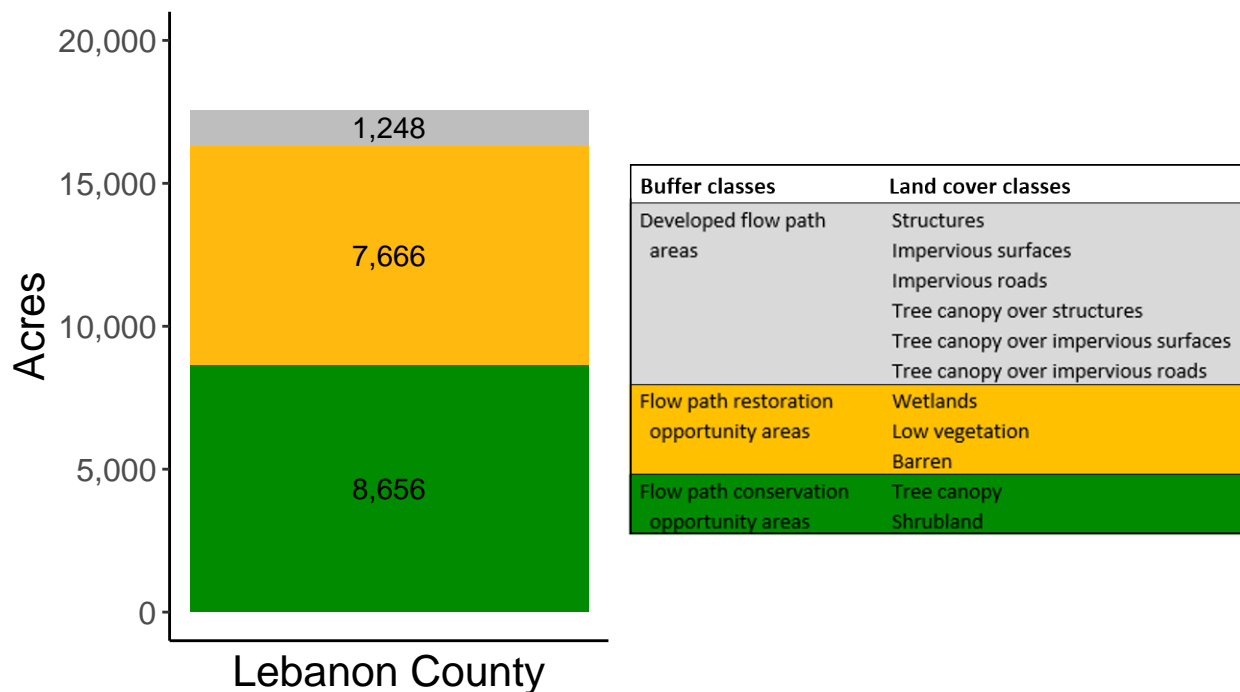
Created by: Chesapeake Conservancy, February 2019

Data Description

The buffer analysis is based on two Geospatial Information Systems (GIS) datasets created by Chesapeake Conservancy and partners. The enhanced flow path water network dataset was derived from 2006 & 2008 PAMAP Statewide digital elevation models (DEMs), developed from Lidar data. Channel heads were assigned where upslope drainage accumulation reached 60 acres. Flow paths were widened based on US Geological Survey regional curves and enhanced with high-resolution land cover. The high-resolution land cover dataset was derived from 2013 National Agriculture Inventory Program imagery. Both datasets have a spatial resolution of 1 meter. Pixels from the high-resolution land cover dataset within 35 ft. and 100 ft. distances of the enhanced flow path water network were considered in the buffer analysis. For more information and to download datasets, go to www.ChesapeakeConservancy.org and search for “data downloader.”

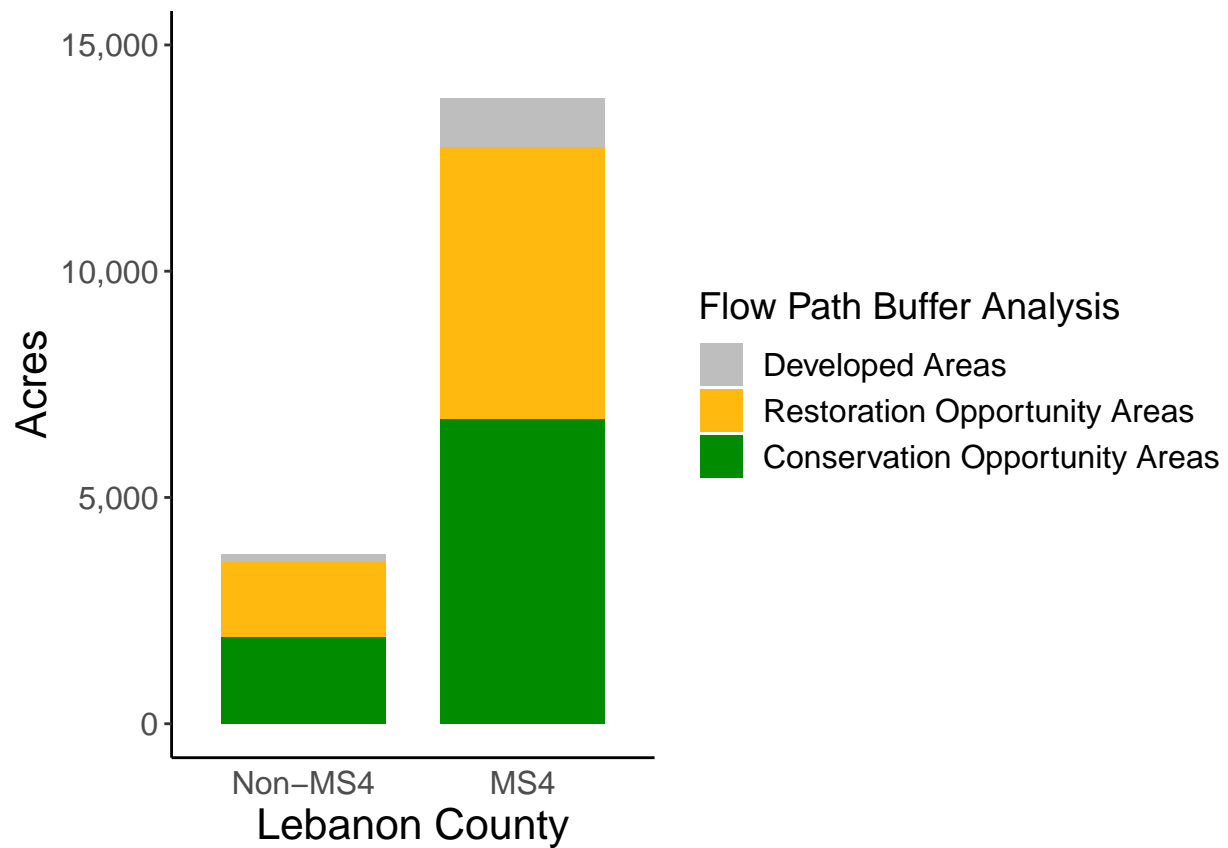
County Summary

Lebanon County contains a total of 7,666 acres of flow path restoration opportunity area, and has 49.26% forest buffer coverage. Lebanon County has incomplete buffer data coverage.



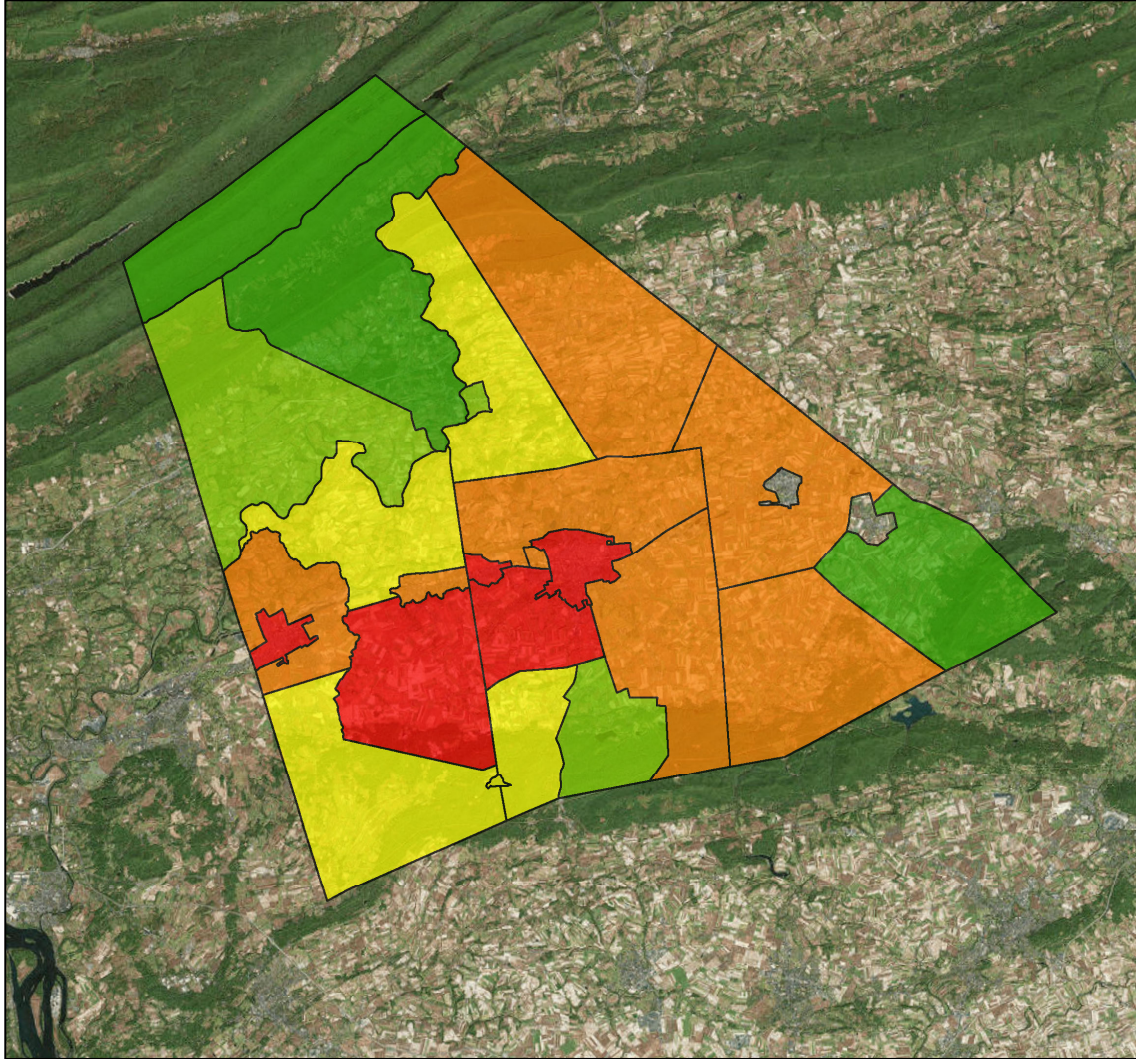
Municipal Separate Storm Sewer System (MS4) Regulated Municipality Summary

Totals by Municipalities



Averages for MS4 and Non-MS4 Municipalities

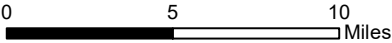
	Non-MS4	MS4
Conservation Opportunity Areas (Acres)	384	355
Restoration Opportunity Areas (Acres)	332	316
Developed Areas (Acres)	34	57
Total Buffer Acres	751	727
Percent Forest Buffer Coverage (%)	65.32	41.13



Lebanon County Municipalities

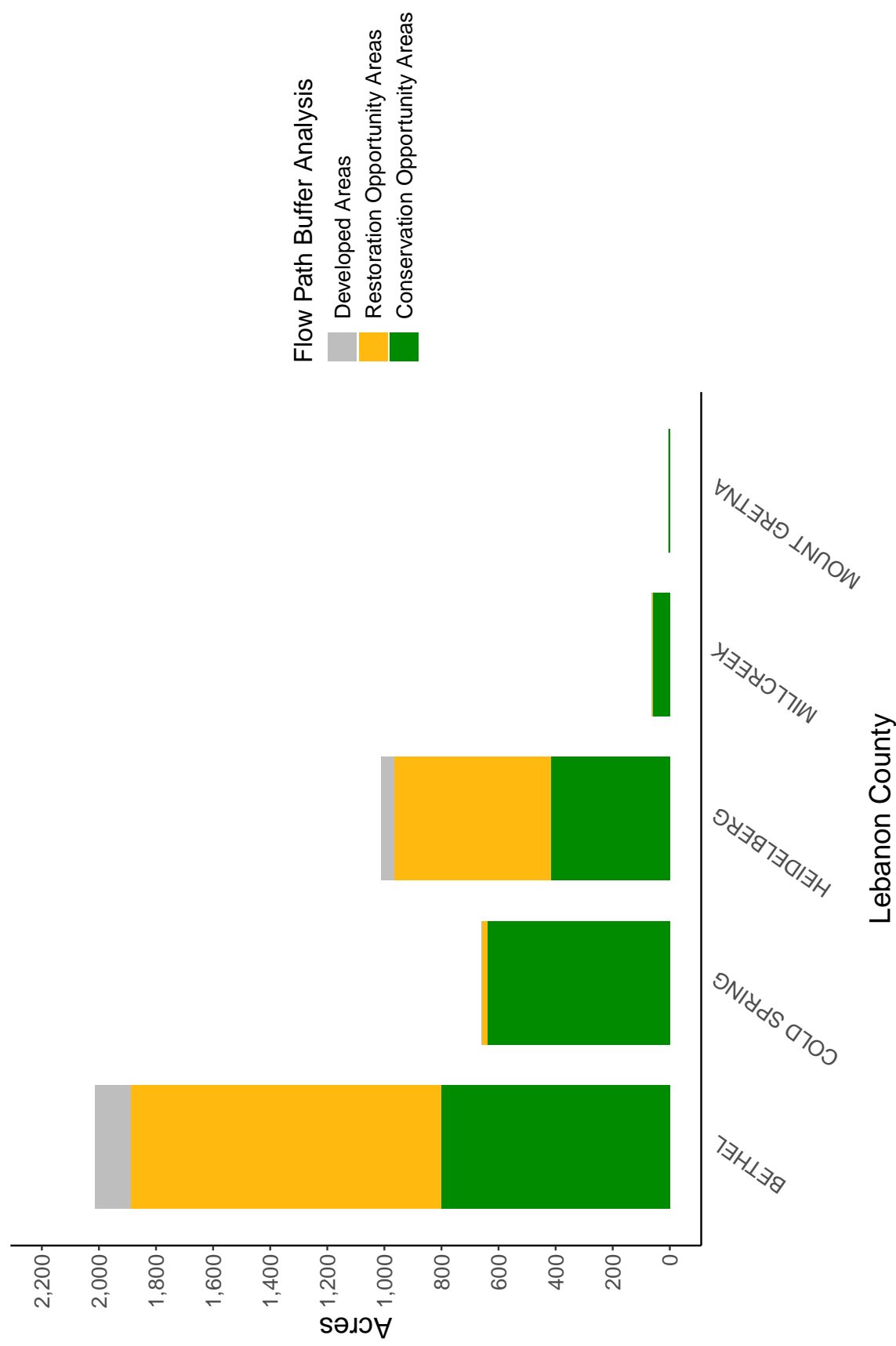
100' Buffer Coverage (%)

- 0 - 20%
- 20 - 50%
- 50 - 60%
- 60 - 70%
- 70 - 100%



Municipality	MS4	Total 100 ft buffer acres	Conservation opportunity areas (acres)	Restoration opportunity areas (acres)	Developed areas (acres)	Percent forest buffer coverage (%)
BETHEL	0	2,015	800	1,090	124	39.72
COLD SPRING	0	659	640	18	0	97.15
HEIDELBERG	0	1,010	416	550	44	41.21
MILLCREEK	0	63	59	2	2	93.50
MOUNT GRETNA	0	6	4	1	2	55.02
ANNVILLE	1	148	60	45	44	40.16
CLEONA	1	55	9	26	19	15.90
CORNWALL	1	542	325	178	38	60.05
EAST HANOVER	1	2,076	1,301	678	97	62.68
JACKSON	1	289	97	177	15	33.64
JONESTOWN	1	37	25	11	2	66.44
LEBANON	1	339	62	83	194	18.29
NORTH ANNVILLE	1	1,094	631	424	40	57.63
NORTH CORNWALL	1	633	112	467	54	17.70
NORTH LEBANON	1	707	255	391	61	36.00
NORTH LONDONDERRY	1	670	283	319	68	42.20
PALMYRA	1	85	10	32	43	12.10
SOUTH ANNVILLE	1	1,105	219	841	46	19.82
SOUTH LEBANON	1	967	230	660	78	23.76
SOUTH LONDONDERRY	1	1,384	767	557	60	55.40
SWATARA	1	1,326	723	537	66	54.53
UNION	1	1,973	1,434	410	129	72.70
WEST CORNWALL	1	377	191	167	19	50.75
WEST LEBANON	1	11	5	2	4	41.73

Non-MS4 Regulated Municipalities



MS4 Regulated Municipalities

