

Mifflin County Forest Buffer Summary

100 ft. Width

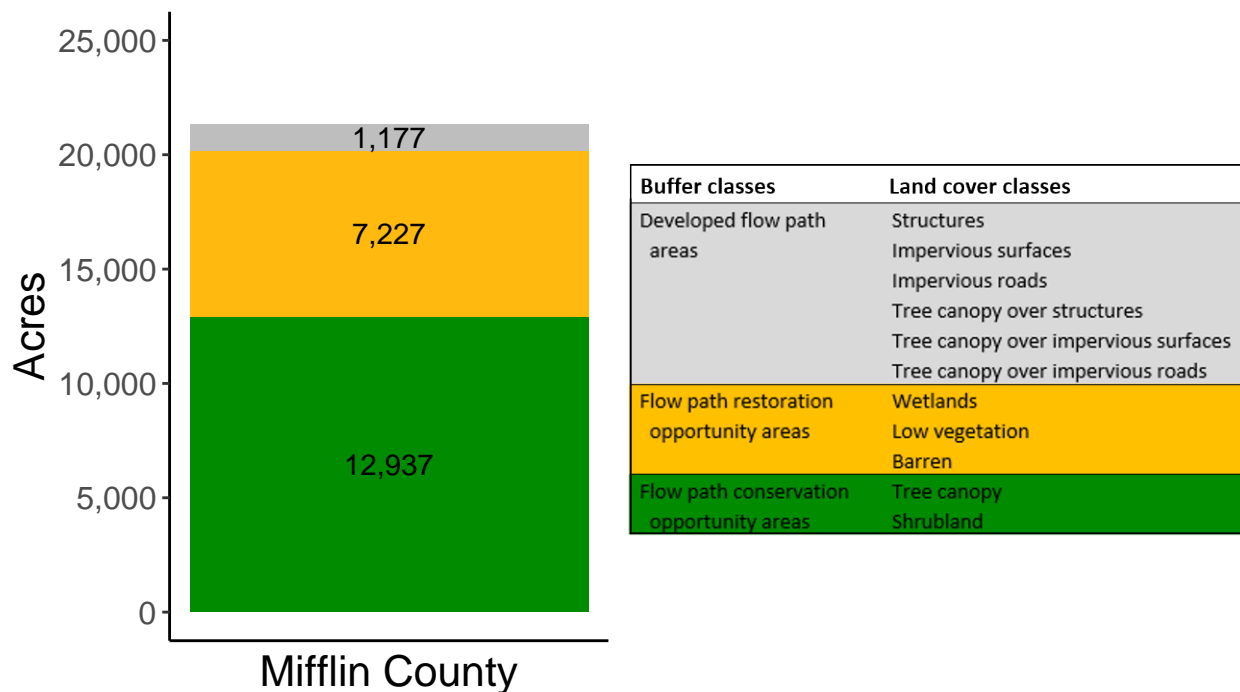
Created by: Chesapeake Conservancy, February 2019

Data Description

The buffer analysis is based on two Geospatial Information Systems (GIS) datasets created by Chesapeake Conservancy and partners. The enhanced flow path water network dataset was derived from 2006 & 2008 PAMAP Statewide digital elevation models (DEMs), developed from Lidar data. Channel heads were assigned where upslope drainage accumulation reached 60 acres. Flow paths were widened based on US Geological Survey regional curves and enhanced with high-resolution land cover. The high-resolution land cover dataset was derived from 2013 National Agriculture Inventory Program imagery. Both datasets have a spatial resolution of 1 meter. Pixels from the high-resolution land cover dataset within 35 ft. and 100 ft. distances of the enhanced flow path water network were considered in the buffer analysis. For more information and to download datasets, go to www.ChesapeakeConservancy.org and search for “data downloader.”

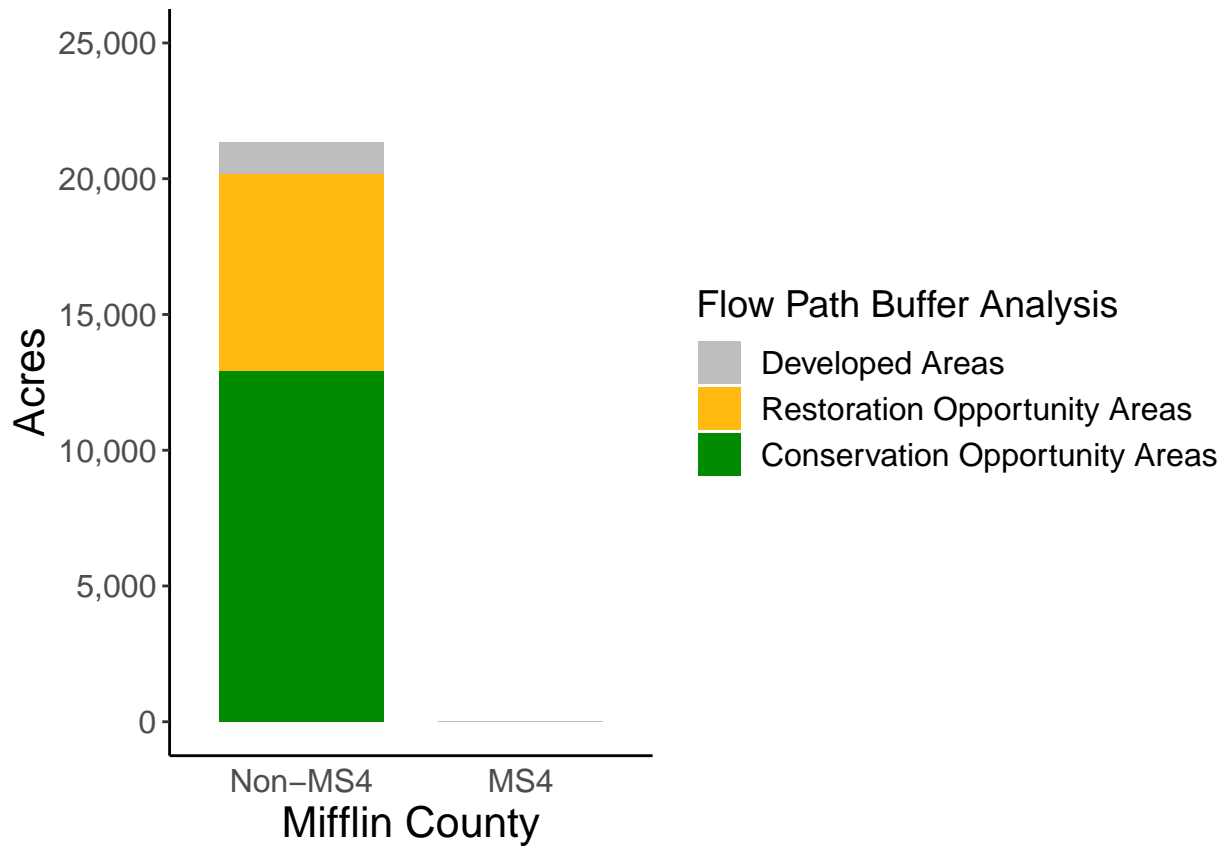
County Summary

Mifflin County contains a total of 7,227 acres of flow path restoration opportunity area, and has 60.62% forest buffer coverage. Mifflin County has complete buffer data coverage.



Municipal Separate Storm Sewer System (MS4) Regulated Municipality Summary

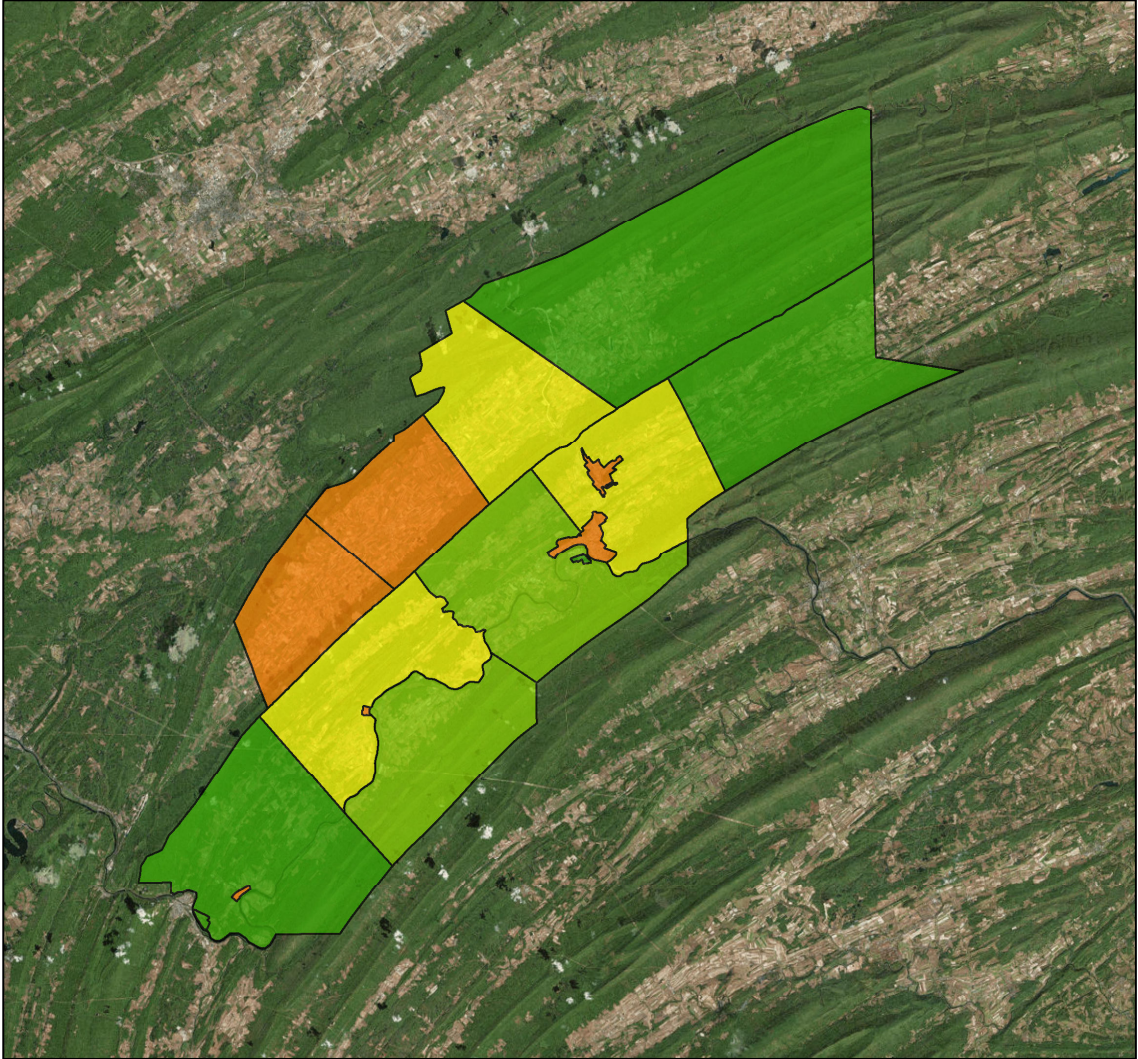
Totals by Municipalities



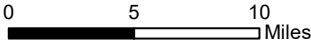
Mifflin County does not contain any MS4 Municipalities.

Averages for MS4 and Non-MS4 Municipalities






	Non-MS4	MS4
Conservation Opportunity Areas (Acres)	809	0
Restoration Opportunity Areas (Acres)	452	0
Developed Areas (Acres)	74	0
Total Buffer Acres	1334	0
Percent Forest Buffer Coverage (%)	55.77	0.00



Mifflin County Municipalities



100' Buffer Coverage (%)

-  0 - 20%
-  20 - 50%
-  50 - 60%
-  60 - 70%
-  70 - 100%



Municipality	MS4	Total 100 ft buffer acres	Conservation opportunity areas (acres)	Restoration opportunity areas (acres)	Developed areas (acres)	Percent forest buffer coverage (%)
ARMAGH	0	4,492	3,425	926	141	76.25
BRATTON	0	1,593	1,081	421	91	67.85
BROWN	0	1,614	826	691	97	51.16
BURNHAM	0	116	41	17	59	35.40
DECATUR	0	2,171	1,581	519	70	72.83
DERRY	0	1,683	904	615	164	53.72
GRANVILLE	0	2,204	1,426	643	136	64.67
JUNIATA TERRACE	0	2	2	0	0	91.13
KISTLER	0	25	18	7	0	70.61
LEWISTOWN	0	160	77	37	47	47.81
MCVEYTOWN	0	6	3	2	1	48.76
MENNO	0	1,425	373	989	62	26.20
NEWTON HAMILTON	0	17	7	6	4	38.46
OLIVER	0	1,816	934	810	72	51.46
UNION	0	1,350	329	930	91	24.39
WAYNE	0	2,667	1,912	615	141	71.68

*

Non-MS4 Regulated Municipalities

