

# Montour County Forest Buffer Summary

## 100 ft. Width

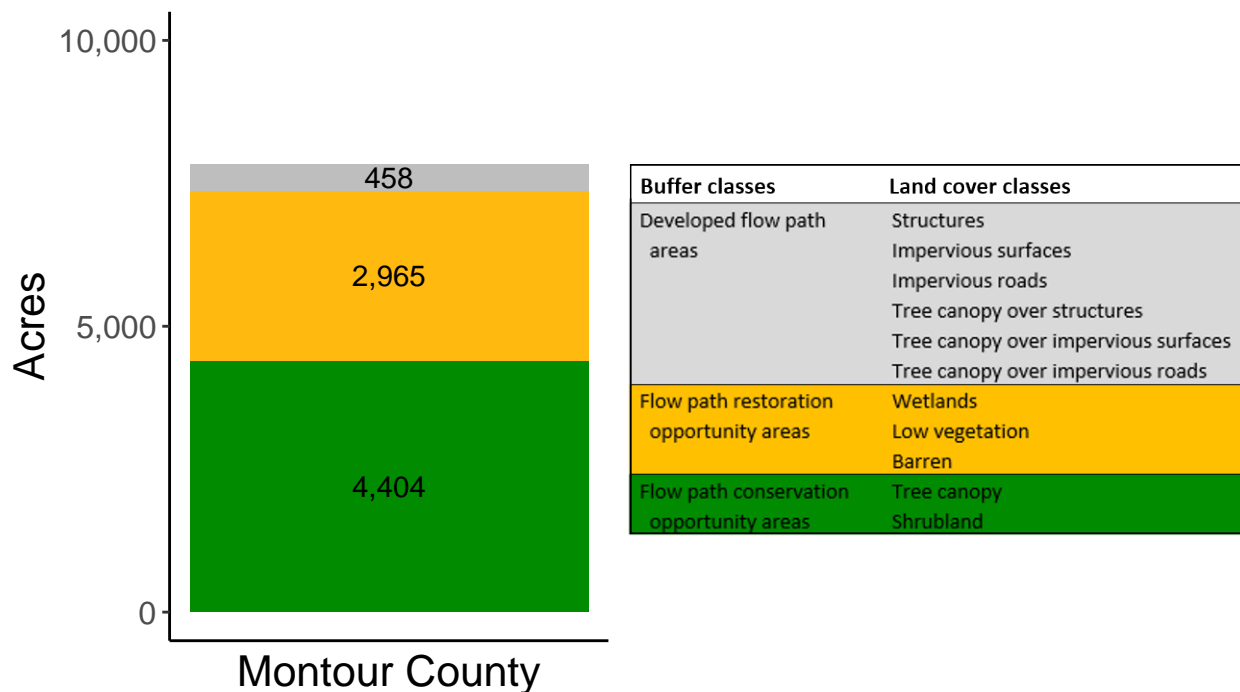
*Created by: Chesapeake Conservancy, February 2019*

### Data Description

The buffer analysis is based on two Geospatial Information Systems (GIS) datasets created by Chesapeake Conservancy and partners. The enhanced flow path water network dataset was derived from 2006 & 2008 PAMAP Statewide digital elevation models (DEMs), developed from Lidar data. Channel heads were assigned where upslope drainage accumulation reached 60 acres. Flow paths were widened based on US Geological Survey regional curves and enhanced with high-resolution land cover. The high-resolution land cover dataset was derived from 2013 National Agriculture Inventory Program imagery. Both datasets have a spatial resolution of 1 meter. Pixels from the high-resolution land cover dataset within 35 ft. and 100 ft. distances of the enhanced flow path water network were considered in the buffer analysis. For more information and to download datasets, go to [www.ChesapeakeConservancy.org](http://www.ChesapeakeConservancy.org) and search for “data downloader.”

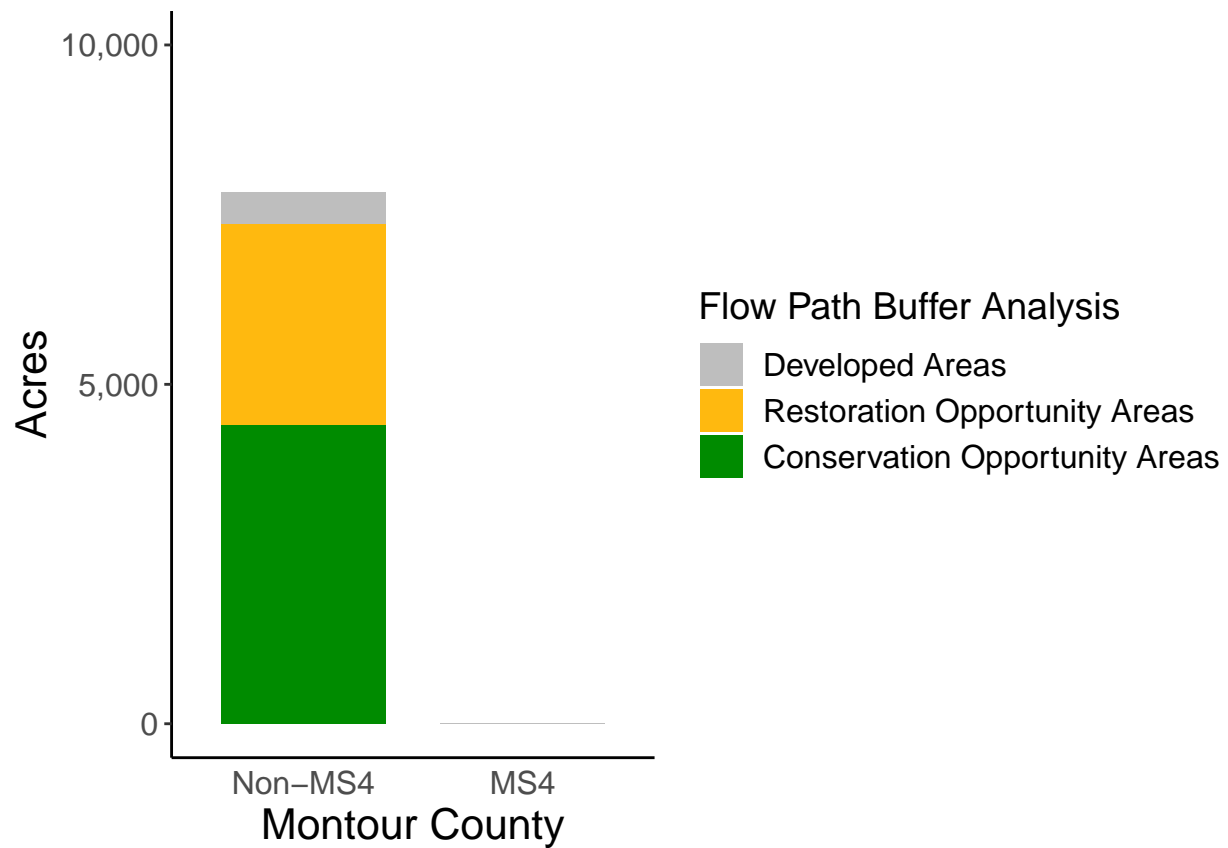
### County Summary

Montour County contains a total of 2,965 acres of flow path restoration opportunity area, and has 56.26% forest buffer coverage. Montour County has complete buffer data coverage.



# Municipal Separate Storm Sewer System (MS4) Regulated Municipality Summary

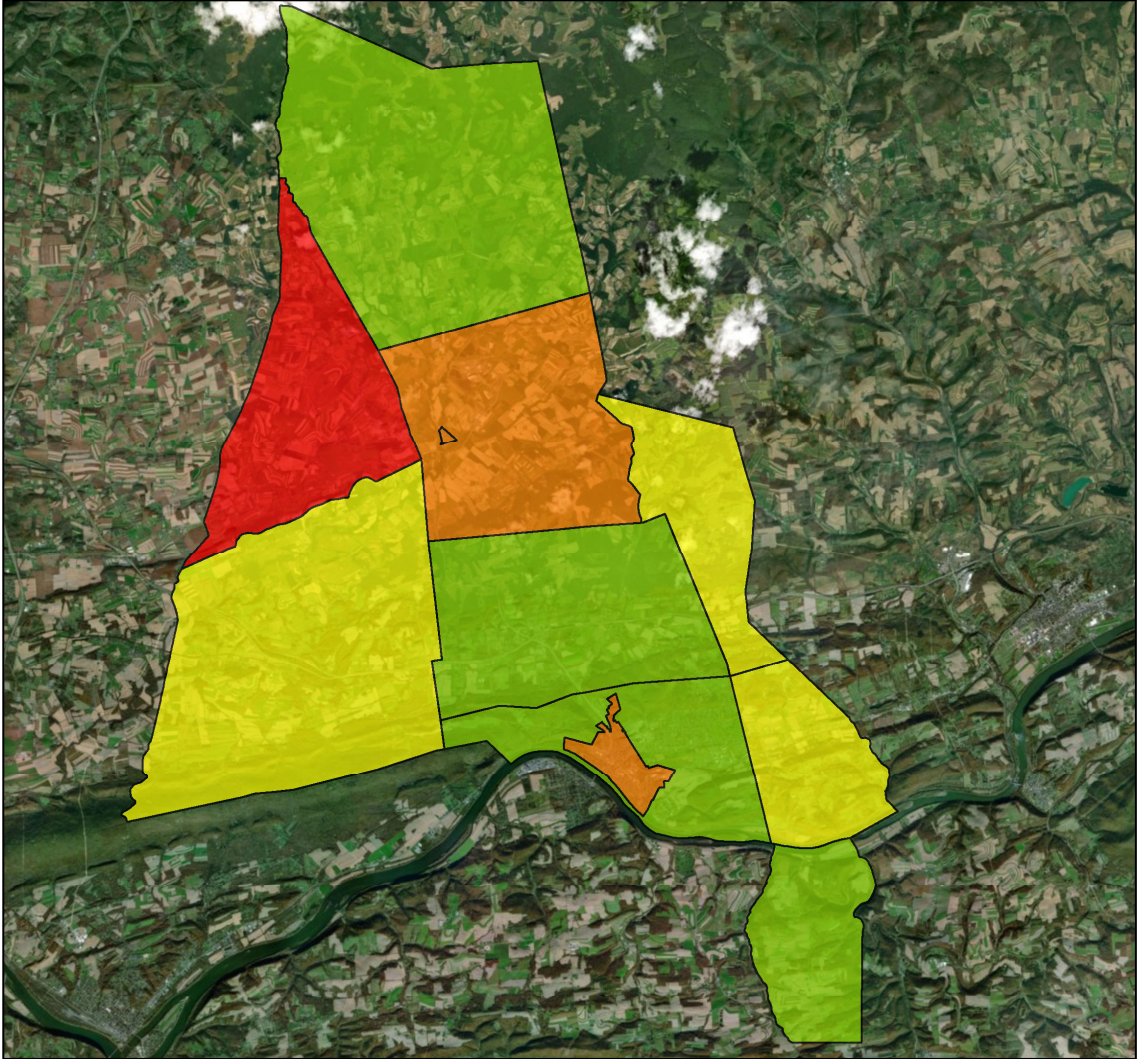
## Totals by Municipalities



Montour County does not contain any MS4 Municipalities.

## Averages for MS4 and Non-MS4 Municipalities

	Non-MS4	MS4
Conservation Opportunity Areas (Acres)	400	0
Restoration Opportunity Areas (Acres)	270	0
Developed Areas (Acres)	42	0
Total Buffer Acres	712	0
Percent Forest Buffer Coverage (%)	53.60	0.00



**Montour County Municipalities**

**100' Buffer Coverage (%)**

- 0 - 20%
- 20 - 50%
- 50 - 60%
- 60 - 70%
- 70 - 100%



Municipality	MS4	Total 100 ft buffer acres	Conservation opportunity areas (acres)	Restoration opportunity areas (acres)	Developed areas (acres)	Percent forest buffer coverage (%)
ANTHONY	0	1,483	1,016	433	35	68.48
COOPER	0	416	240	144	32	57.66
DANVILLE	0	154	62	48	45	40.00
DERRY	0	1,210	565	580	65	46.70
LIBERTY	0	1,561	928	577	56	59.46
LIMESTONE	0	670	122	523	26	18.15
MAHONING	0	583	377	140	66	64.68
MAYBERRY	0	358	226	119	12	63.23
VALLEY	0	997	633	273	91	63.48
WASHINGTONVILLE	0	4	2	0	2	48.02
WEST HEMLOCK	0	391	234	128	29	59.74

Non-MS4 Regulated Municipalities

