

Northumberland County Forest Buffer Summary

100 ft. Width

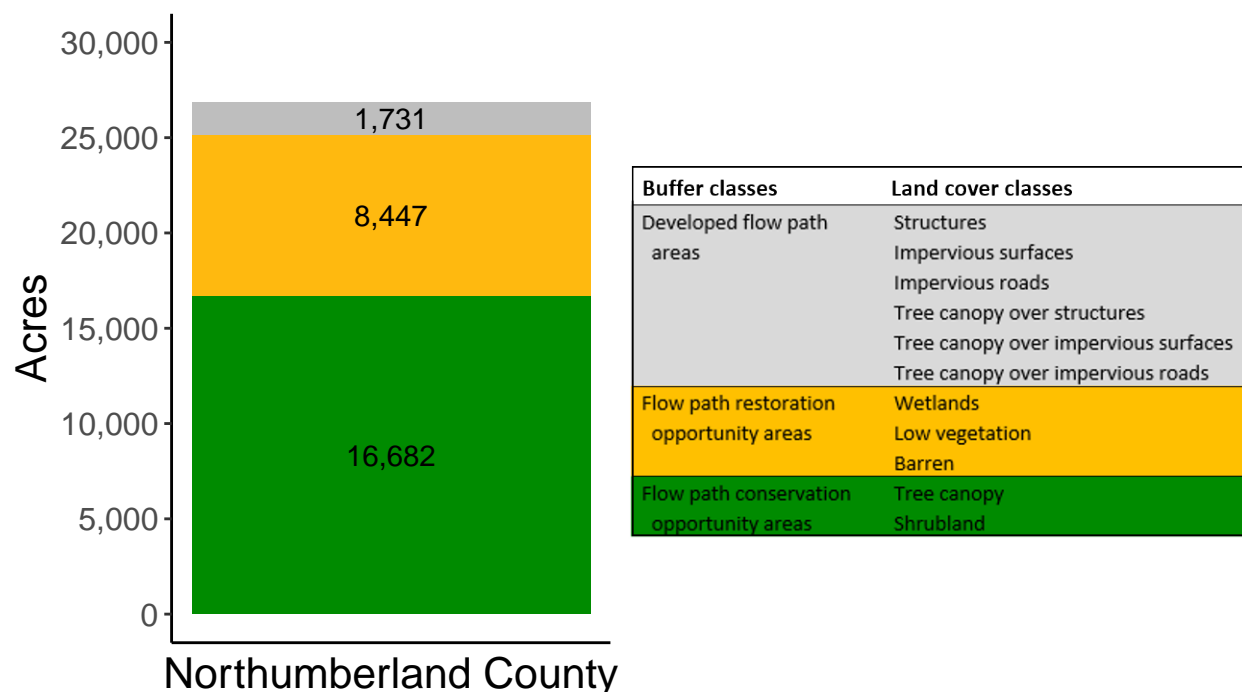
Created by: Chesapeake Conservancy, February 2019

Data Description

The buffer analysis is based on two Geospatial Information Systems (GIS) datasets created by Chesapeake Conservancy and partners. The enhanced flow path water network dataset was derived from 2006 & 2008 PAMAP Statewide digital elevation models (DEMs), developed from Lidar data. Channel heads were assigned where upslope drainage accumulation reached 60 acres. Flow paths were widened based on US Geological Survey regional curves and enhanced with high-resolution land cover. The high-resolution land cover dataset was derived from 2013 National Agriculture Inventory Program imagery. Both datasets have a spatial resolution of 1 meter. Pixels from the high-resolution land cover dataset within 35 ft. and 100 ft. distances of the enhanced flow path water network were considered in the buffer analysis. For more information and to download datasets, go to www.ChesapeakeConservancy.org and search for “data downloader.”

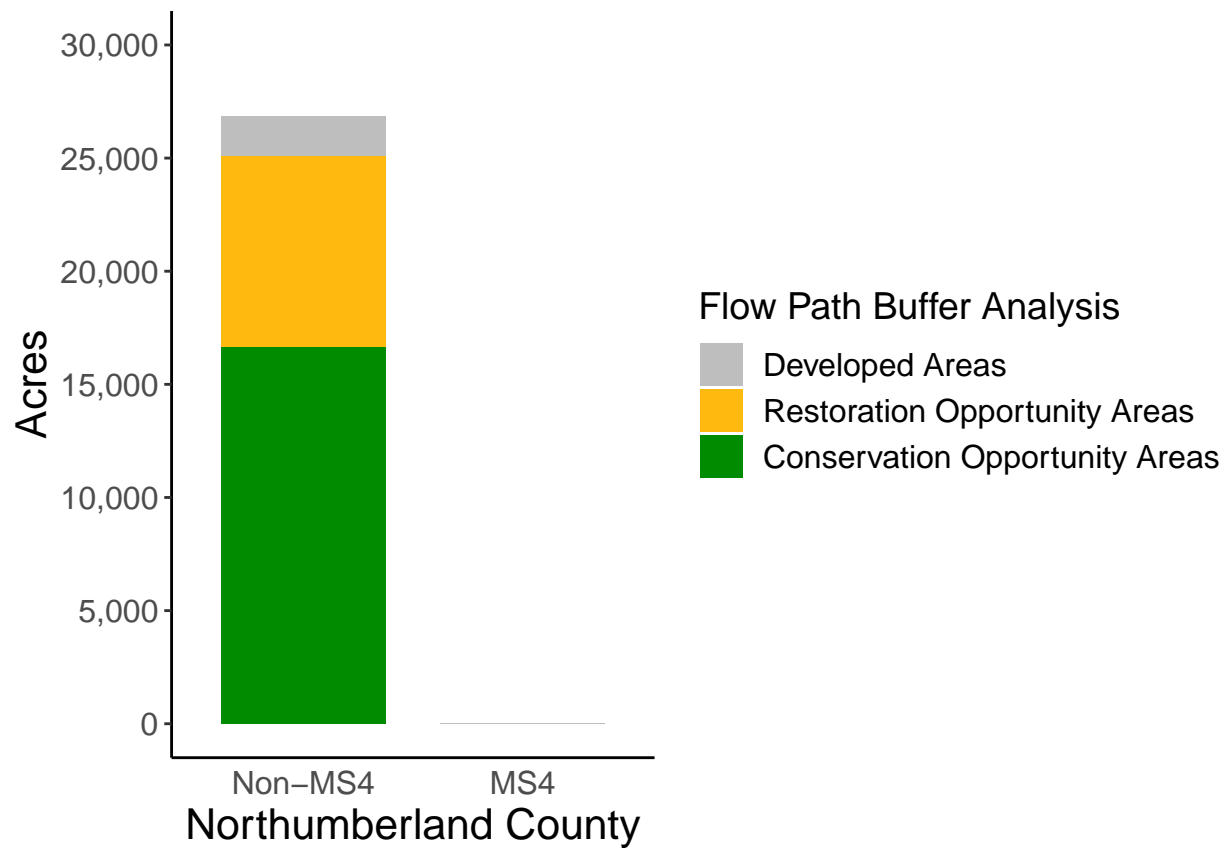
County Summary

Northumberland County contains a total of 8,447 acres of flow path restoration opportunity area, and has 62.11% forest buffer coverage. Northumberland County has complete buffer data coverage.



Municipal Separate Storm Sewer System (MS4) Regulated Municipality Summary

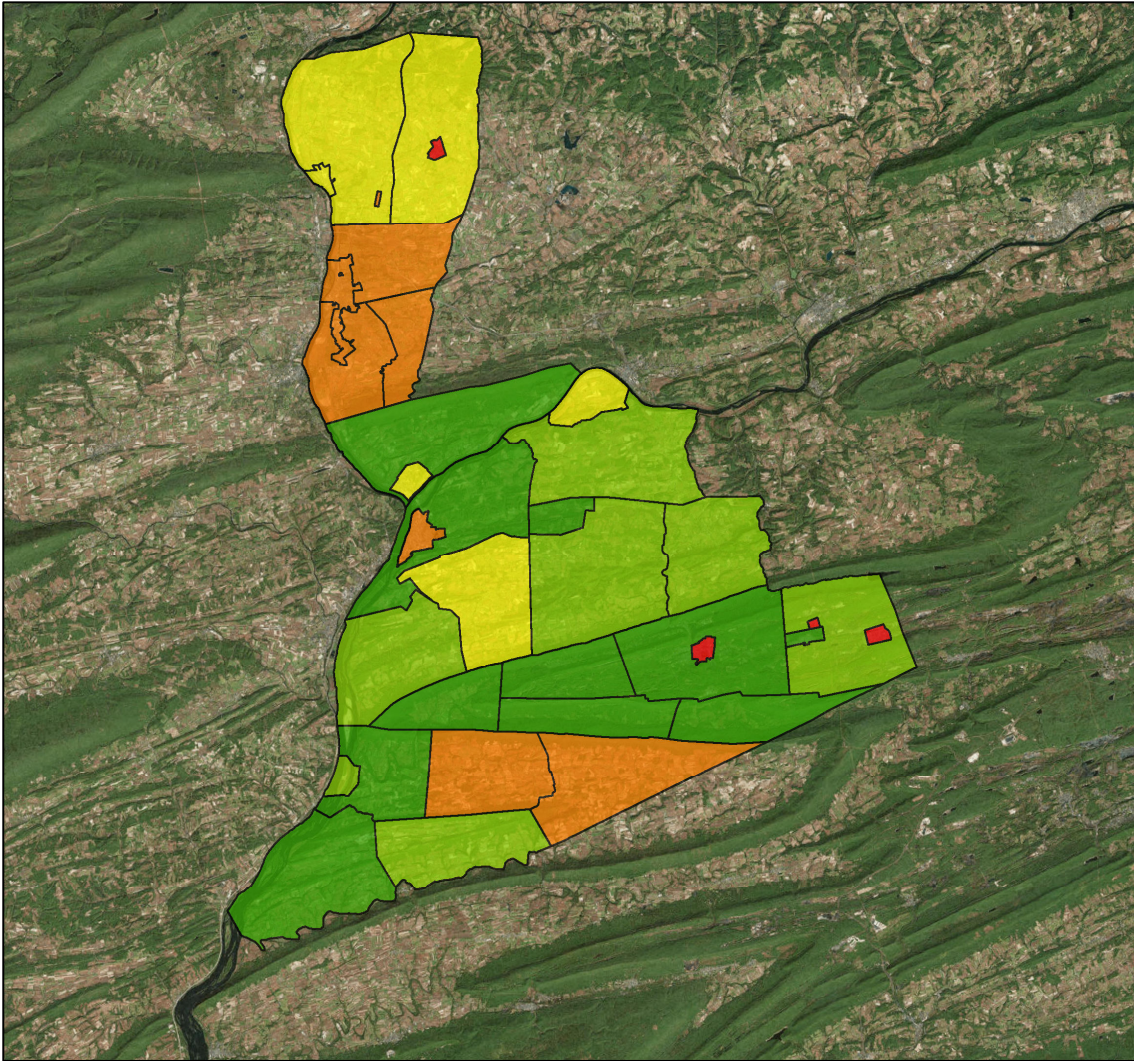
Totals by Municipalities



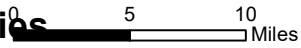
Northumberland County does not contain any MS4 Municipalities.

Averages for MS4 and Non-MS4 Municipalities

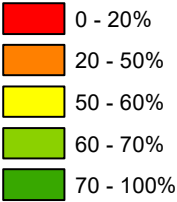
	Non-MS4	MS4
Conservation Opportunity Areas (Acres)	463	0
Restoration Opportunity Areas (Acres)	235	0
Developed Areas (Acres)	48	0
Total Buffer Acres	746	0
Percent Forest Buffer Coverage (%)	56.34	0.00



Northumberland County Municipalities



100' Buffer Coverage (%)



Municipality	MS4	Total 100 ft buffer acres	Conservation opportunity areas (acres)	Restoration opportunity areas (acres)	Developed areas (acres)	Percent forest buffer coverage (%)
COAL	0	1,373	992	234	148	72.24
DELAWARE	0	1,907	1,042	752	113	54.66
EAST CAMERON	0	498	434	54	11	86.98
EAST CHILLISQUAQUE	0	499	215	273	12	43.08
HERNDON	0	139	94	32	13	67.76
JACKSON	0	841	601	188	52	71.46
JORDAN	0	900	600	273	28	66.59
KULPMONT	0	59	44	12	3	74.50
LEWIS	0	1,490	754	696	41	50.60
LITTLE MAHANoy	0	509	412	79	18	81.03
LOWER AUGUSTA	0	1,158	759	341	58	65.58
LOWER MAHANoy	0	1,526	1,069	388	69	70.06
MARION HEIGHTS	0	1	0	1	0	9.18
MCEWENSVILLE	0	8	3	5	0	38.88
MILTON	0	247	117	66	63	47.56
MOUNT CARMEL	0	69	12	16	40	17.05
MT CARMEL	0	1,192	829	283	80	69.53
NORTHUMBERLAND	0	121	61	22	38	50.49
POINT	0	1,691	1,232	354	104	72.90
RALPHO	0	1,032	648	294	90	62.82
RIVERSIDE	0	376	218	121	37	57.99
ROCKEFELLER	0	1,262	712	506	43	56.46
RUSH	0	1,470	952	452	65	64.79
SHAMOKIN	0	1,648	1,104	452	92	67.03
SHAMOKIN	0	96	16	12	68	16.57
SNYDERTOWN	0	265	222	33	10	83.93
SUNBURY	0	221	79	77	64	35.97
TURBOT	0	824	188	562	74	22.79
TURBOTVILLE	0	25	5	12	8	19.14
UPPER AUGUSTA	0	1,411	1,038	278	95	73.55
UPPER MAHANoy	0	1,038	454	541	42	43.79
WASHINGTON	0	949	440	466	43	46.34
WATSONTOWN	0	63	33	9	20	52.93
WEST CAMERON	0	443	399	32	11	90.18
WEST CHILLISQUAQUE	0	870	409	404	58	46.93

(continued)

Municipality	MS4	Total 100 ft buffer acres	Conservation opportunity areas (acres)	Restoration opportunity areas (acres)	Developed areas (acres)	Percent forest buffer coverage (%)
ZERBE	0	640	493	128	20	76.89
*						

Non-MS4 Regulated Municipalities

