

# Perry County Forest Buffer Summary

## 100 ft. Width

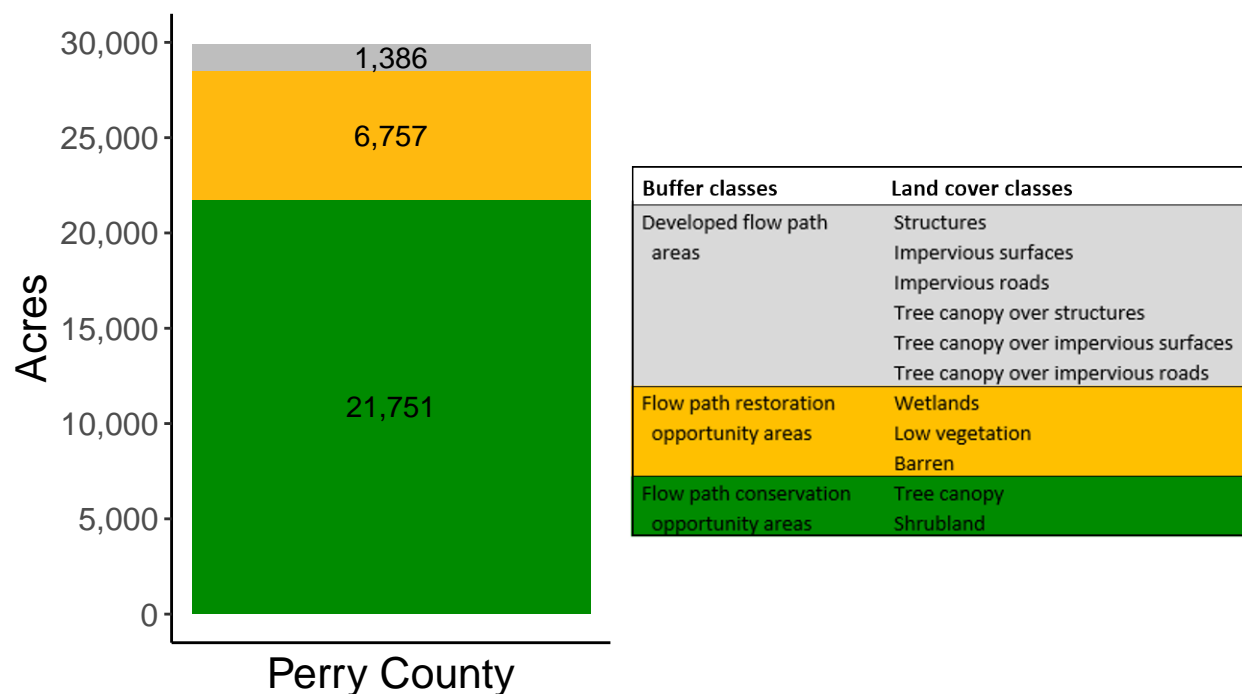
*Created by: Chesapeake Conservancy, February 2019*

### Data Description

The buffer analysis is based on two Geospatial Information Systems (GIS) datasets created by Chesapeake Conservancy and partners. The enhanced flow path water network dataset was derived from 2006 & 2008 PAMAP Statewide digital elevation models (DEMs), developed from Lidar data. Channel heads were assigned where upslope drainage accumulation reached 60 acres. Flow paths were widened based on US Geological Survey regional curves and enhanced with high-resolution land cover. The high-resolution land cover dataset was derived from 2013 National Agriculture Inventory Program imagery. Both datasets have a spatial resolution of 1 meter. Pixels from the high-resolution land cover dataset within 35 ft. and 100 ft. distances of the enhanced flow path water network were considered in the buffer analysis. For more information and to download datasets, go to [www.ChesapeakeConservancy.org](http://www.ChesapeakeConservancy.org) and search for “data downloader.”

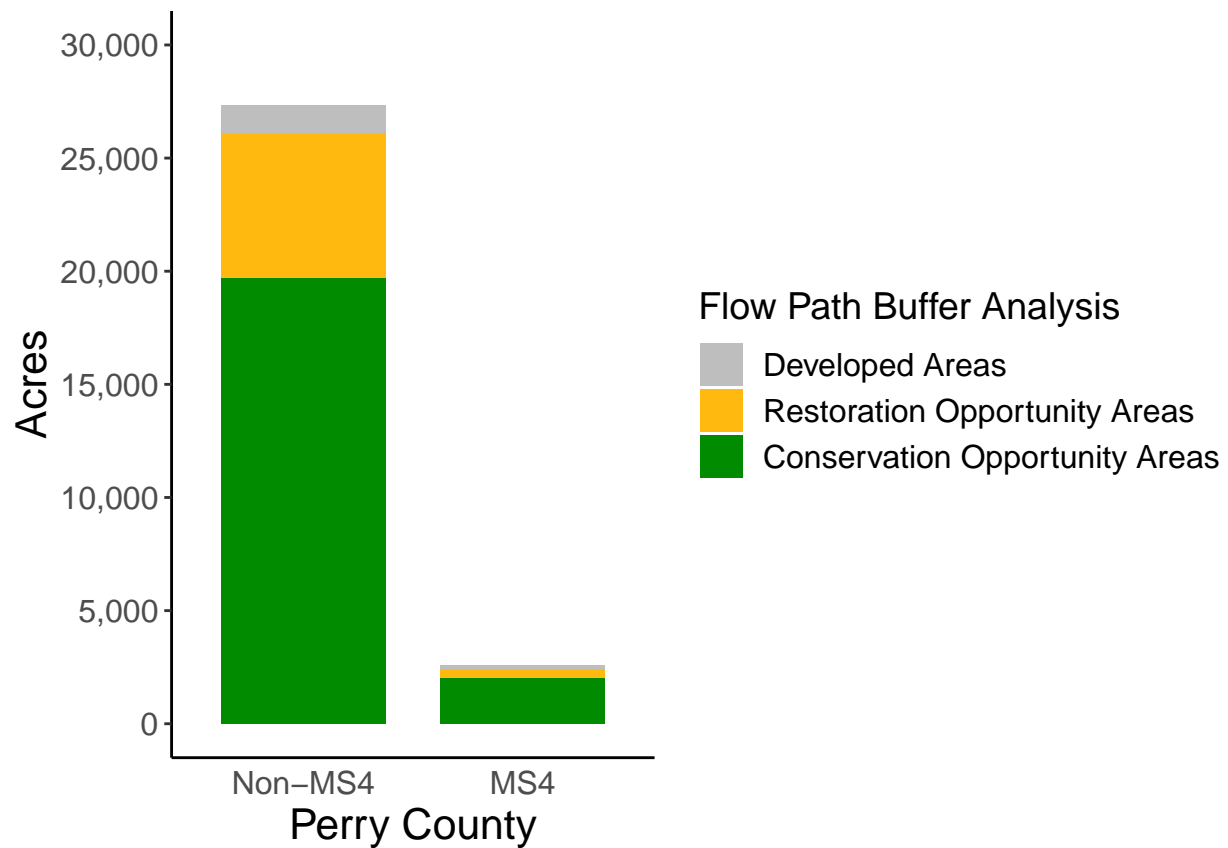
### County Summary

Perry County contains a total of 6,757 acres of flow path restoration opportunity area, and has 72.76% forest buffer coverage. Perry County has complete buffer data coverage.



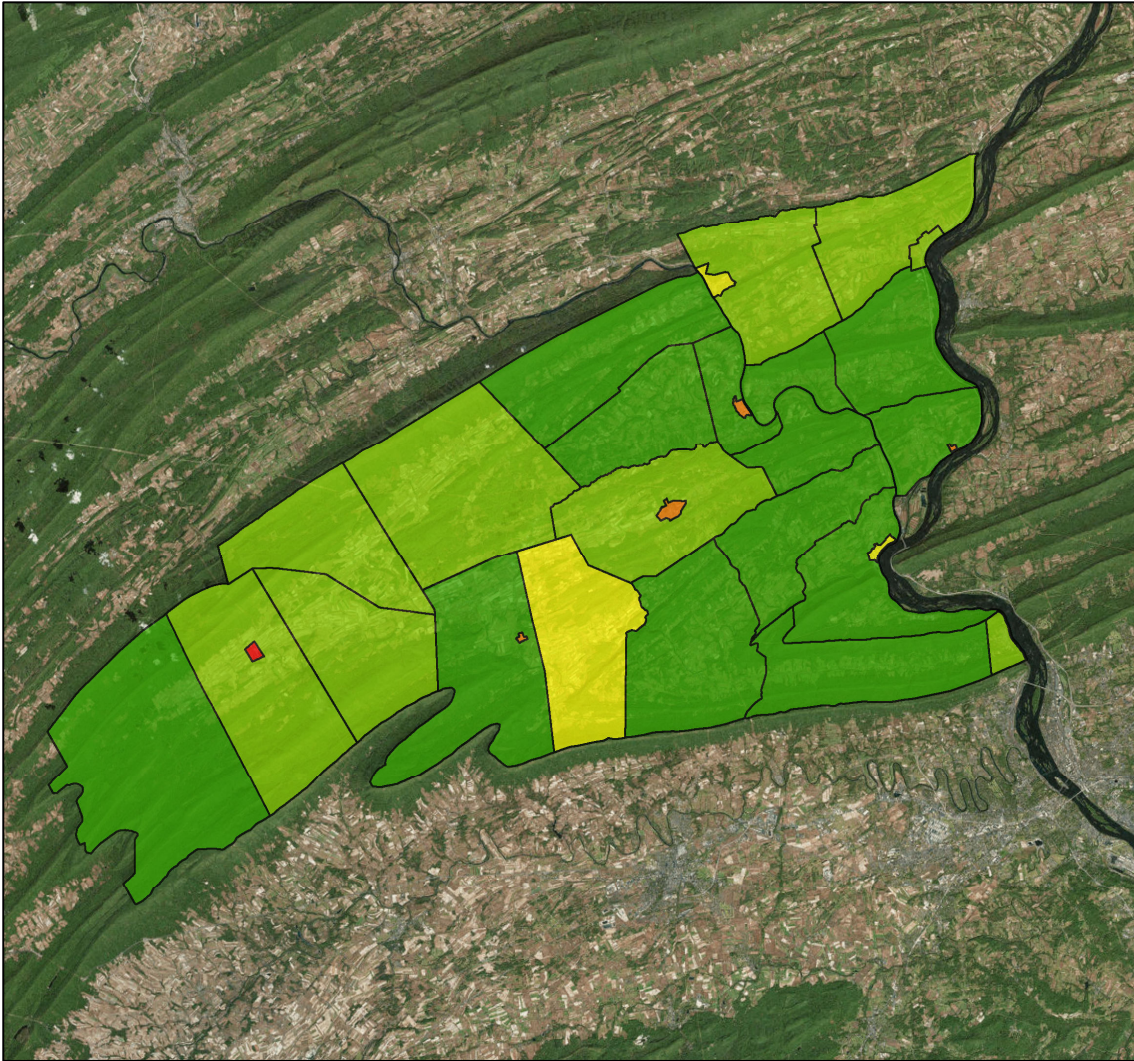
# Municipal Separate Storm Sewer System (MS4) Regulated Municipality Summary

## Totals by Municipalities

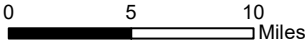


## Averages for MS4 and Non-MS4 Municipalities

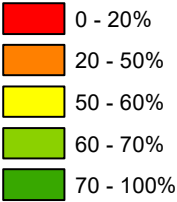
	Non-MS4	MS4
Conservation Opportunity Areas (Acres)	730	680
Restoration Opportunity Areas (Acres)	237	123
Developed Areas (Acres)	45	58
Total Buffer Acres	1012	861
Percent Forest Buffer Coverage (%)	63.91	75.09



**Perry County Municipalities**

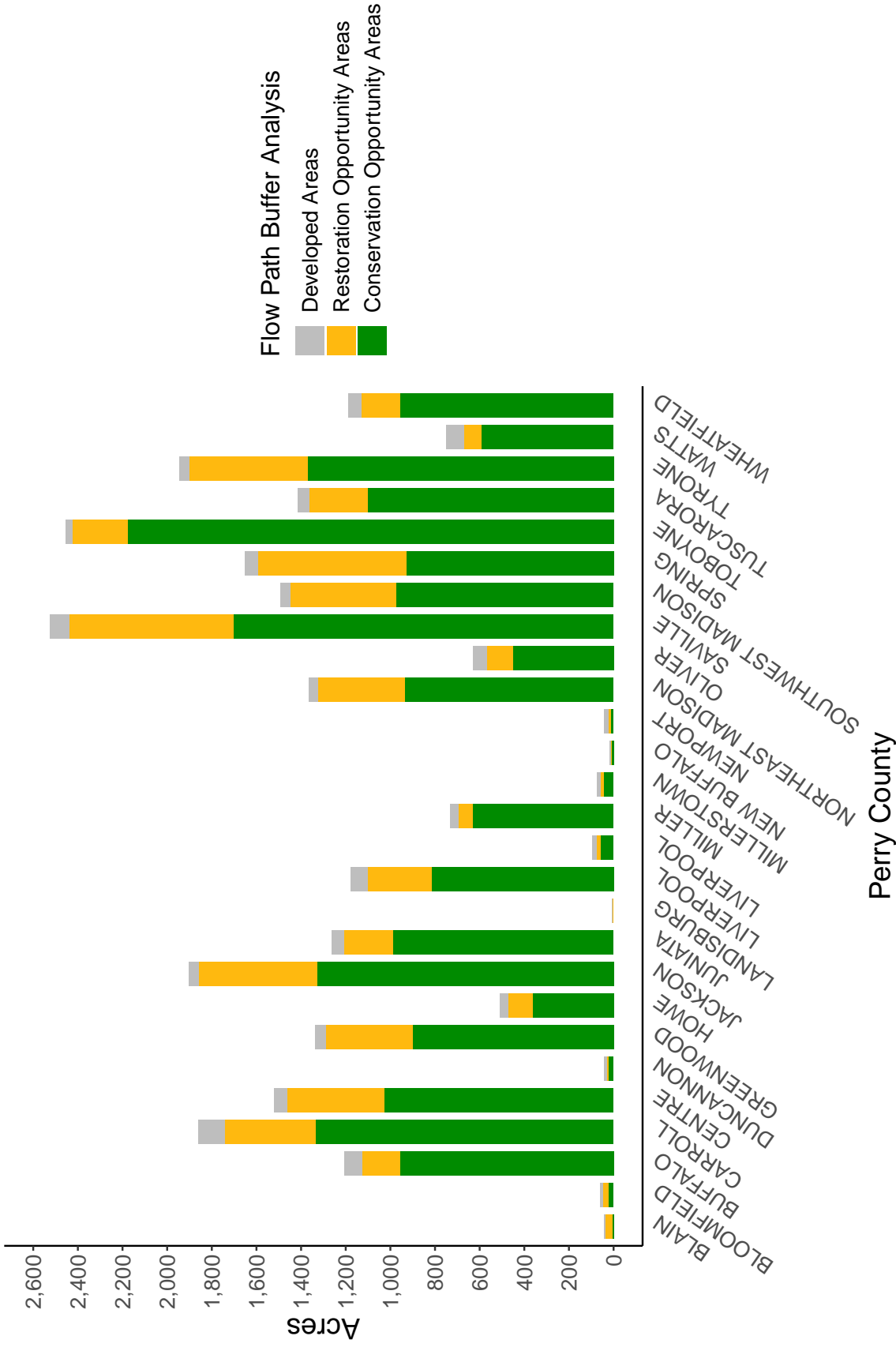


**100' Buffer Coverage (%)**



Municipality	MS4	Total 100 ft buffer acres	Conservation opportunity areas (acres)	Restoration opportunity areas (acres)	Developed areas (acres)	Percent forest buffer coverage (%)
BLAIN	0	43	5	34	4	11.92
BLOOMFIELD	0	62	21	28	13	33.58
BUFFALO	0	1,206	956	170	80	79.27
CARROLL	0	1,861	1,336	406	120	71.78
CENTRE	0	1,521	1,028	434	59	67.60
DUNCANNON	0	42	24	5	13	56.80
GREENWOOD	0	1,336	902	386	48	67.49
HOWE	0	508	361	111	36	71.02
JACKSON	0	1,902	1,328	528	46	69.85
JUNIATA	0	1,261	989	218	55	78.38
LANDISBURG	0	7	2	3	2	35.02
LIVERPOOL	0	1,179	815	287	77	69.18
LIVERPOOL	0	95	60	16	19	62.72
MILLER	0	733	632	64	38	86.17
MILLERSTOWN	0	75	45	15	15	59.60
NEW BUFFALO	0	17	8	3	5	49.54
NEWPORT	0	43	13	9	21	30.12
NORTHEAST MADISON	0	1,365	936	389	40	68.56
OLIVER	0	628	453	114	61	72.13
SAVILLE	0	2,527	1,704	734	88	67.46
SOUTHWEST MADISON	0	1,495	975	474	46	65.19
SPRING	0	1,652	928	665	59	56.15
TOBOYNE	0	2,456	2,176	250	30	88.61
TUSCARORA	0	1,415	1,101	262	52	77.83
TYRONE	0	1,946	1,369	532	45	70.34
WATTS	0	750	590	81	79	78.64
WHEATFIELD	0	1,188	957	173	59	80.50
MARYSVILLE	1	156	103	25	29	65.63
PENN	1	1,200	942	150	108	78.50
RYE	1	1,226	995	195	36	81.14

Non-MS4 Regulated Municipalities



MS4 Regulated Municipalities

