

Potter County Forest Buffer Summary

100 ft. Width

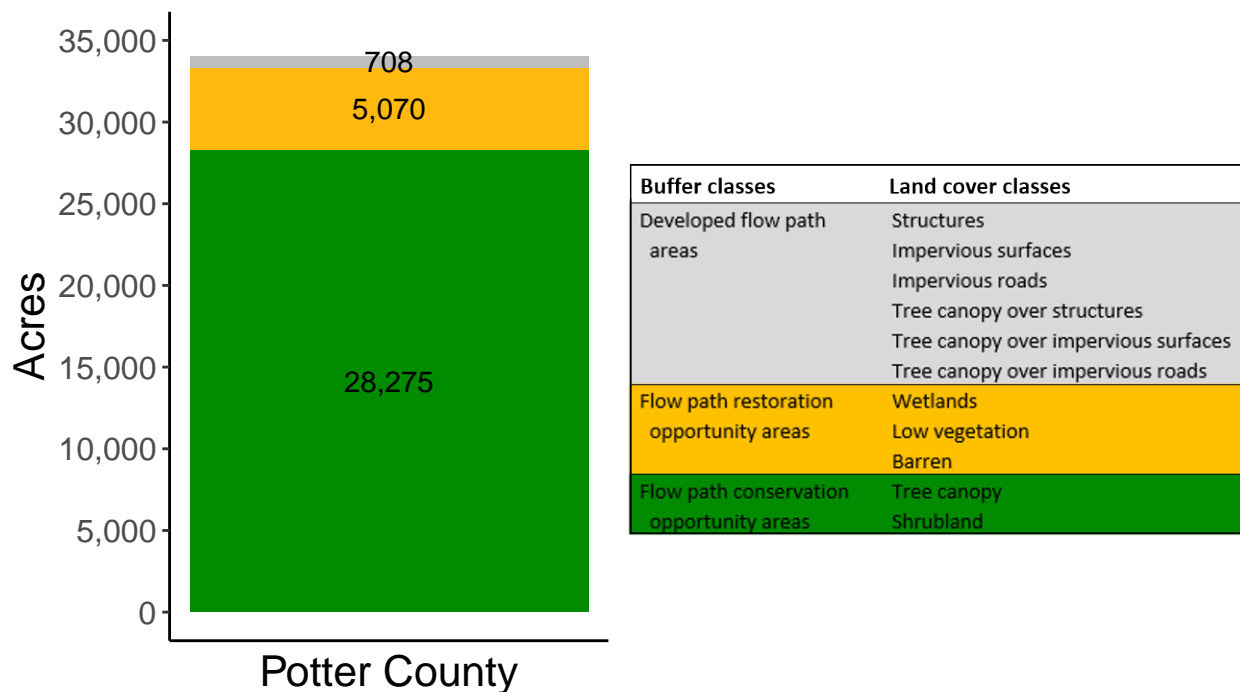
Created by: Chesapeake Conservancy, February 2019

Data Description

The buffer analysis is based on two Geospatial Information Systems (GIS) datasets created by Chesapeake Conservancy and partners. The enhanced flow path water network dataset was derived from 2006 & 2008 PAMAP Statewide digital elevation models (DEMs), developed from Lidar data. Channel heads were assigned where upslope drainage accumulation reached 60 acres. Flow paths were widened based on US Geological Survey regional curves and enhanced with high-resolution land cover. The high-resolution land cover dataset was derived from 2013 National Agriculture Inventory Program imagery. Both datasets have a spatial resolution of 1 meter. Pixels from the high-resolution land cover dataset within 35 ft. and 100 ft. distances of the enhanced flow path water network were considered in the buffer analysis. For more information and to download datasets, go to www.ChesapeakeConservancy.org and search for “data downloader.”

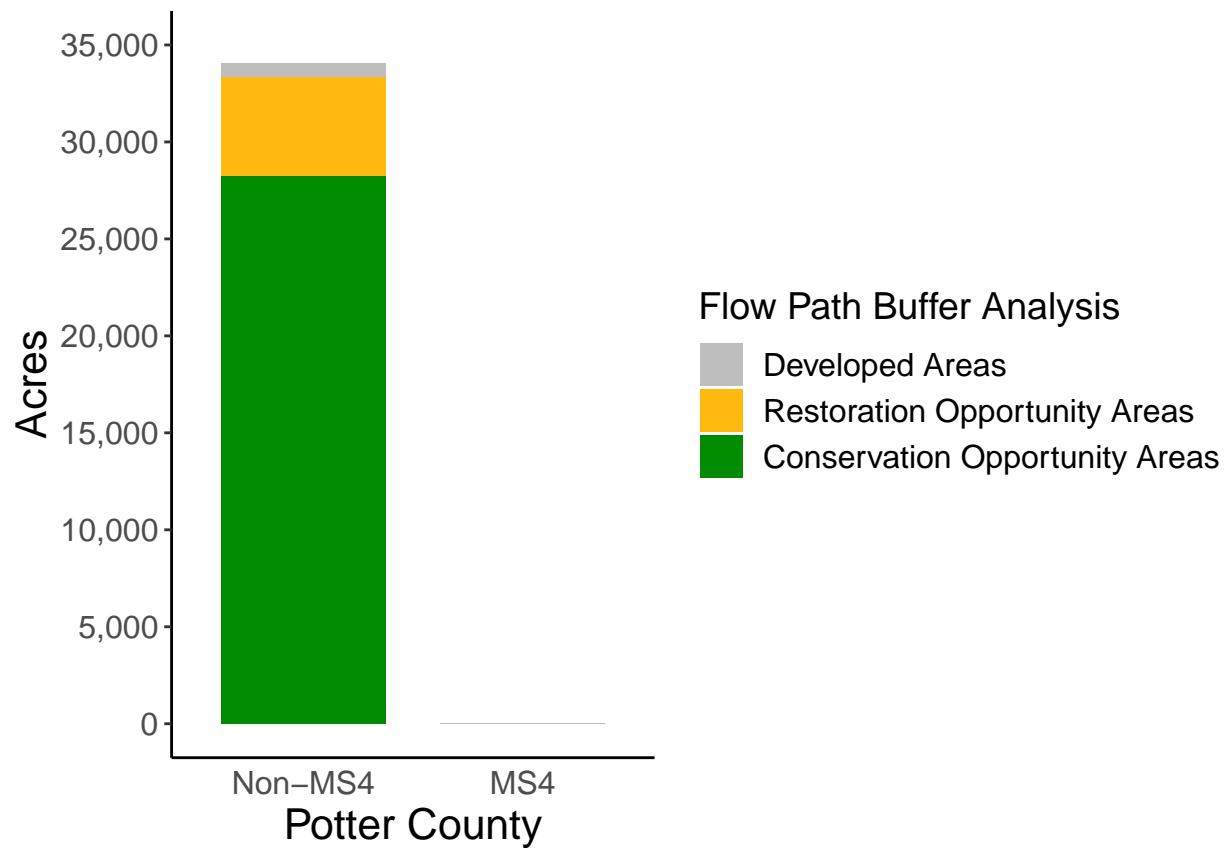
County Summary

Potter County contains a total of 5,070 acres of flow path restoration opportunity area, and has 83.03% forest buffer coverage. Potter County has incomplete buffer data coverage.



Municipal Separate Storm Sewer System (MS4) Regulated Municipality Summary

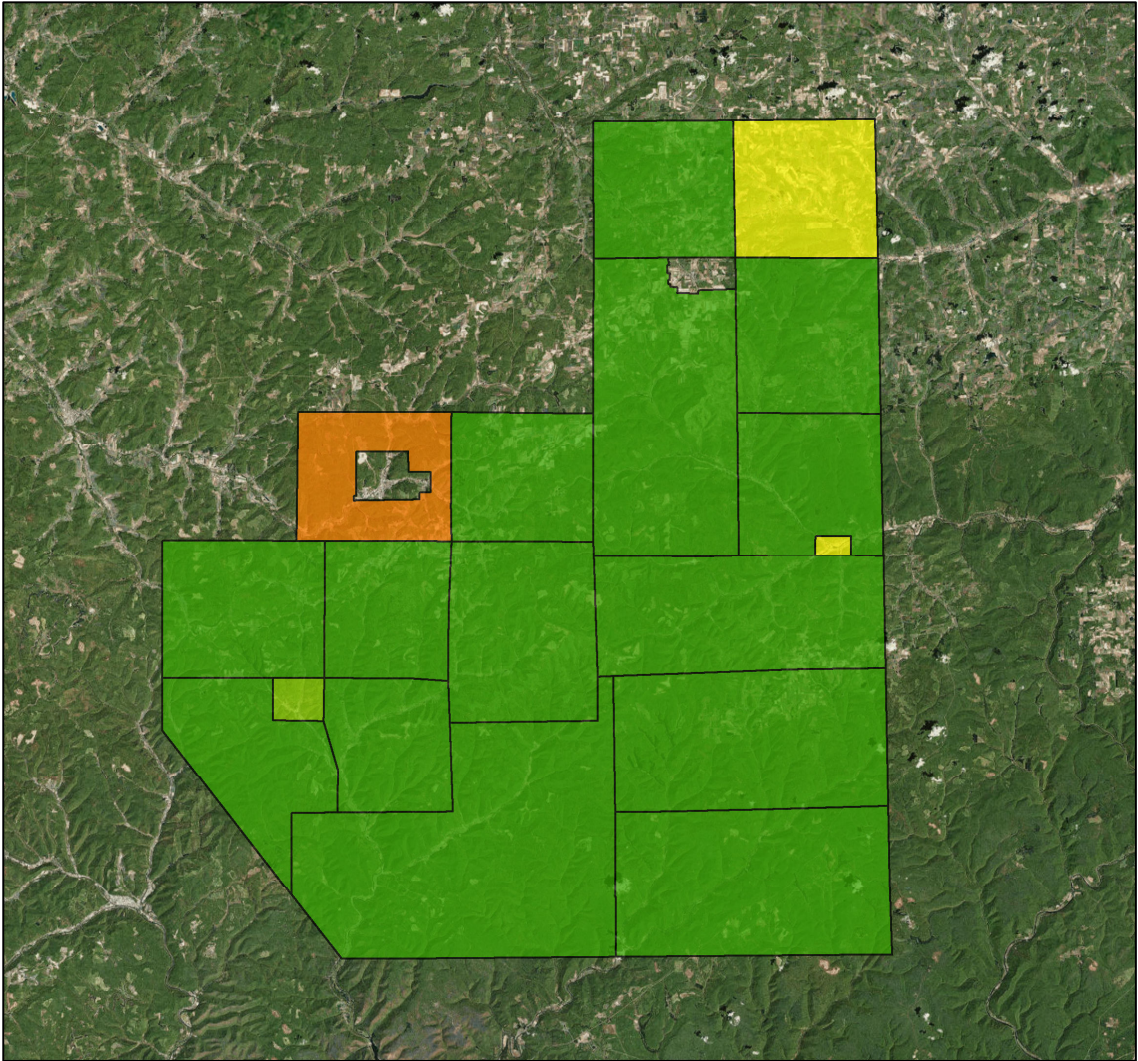
Totals by Municipalities



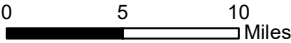
Potter County does not contain any MS4 Municipalities.

Averages for MS4 and Non-MS4 Municipalities

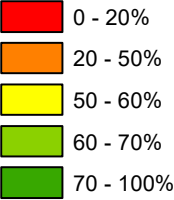
	Non-MS4	MS4
Conservation Opportunity Areas (Acres)	1571	0
Restoration Opportunity Areas (Acres)	282	0
Developed Areas (Acres)	39	0
Total Buffer Acres	1892	0
Percent Forest Buffer Coverage (%)	76.16	0.00



Potter County Municipalities



100' Buffer Coverage (%)



Municipality	MS4	Total 100 ft buffer acres	Conservation opportunity areas (acres)	Restoration opportunity areas (acres)	Developed areas (acres)	Percent forest buffer coverage (%)
ABBOTT	0	3,541	3,032	452	58	85.62
AUSTIN	0	214	148	44	21	69.55
BINGHAM	0	126	91	32	3	72.45
EUALIA	0	69	28	39	2	40.85
GALETON	0	99	53	29	17	53.29
HARRISON	0	1,778	952	766	60	53.56
HECTOR	0	1,947	1,480	427	40	76.00
HOMER	0	1,491	1,181	277	33	79.23
KEATING	0	1,249	922	278	49	73.82
PIKE	0	1,953	1,632	277	44	83.54
PORTAGE	0	1,888	1,681	168	39	89.03
STEWARDSON	0	3,650	3,336	275	39	91.39
SUMMIT	0	2,107	1,759	311	38	83.45
SWEDEN	0	378	304	60	14	80.26
SYLVANIA	0	1,642	1,338	280	24	81.51
ULYSSES	0	3,122	2,648	393	81	84.84
WEST BRANCH	0	3,056	2,520	466	71	82.45
WHARTON	0	5,743	5,170	498	75	90.01

*

Non-MS4 Regulated Municipalities

