

Schuykill County Forest Buffer Summary

100 ft. Width

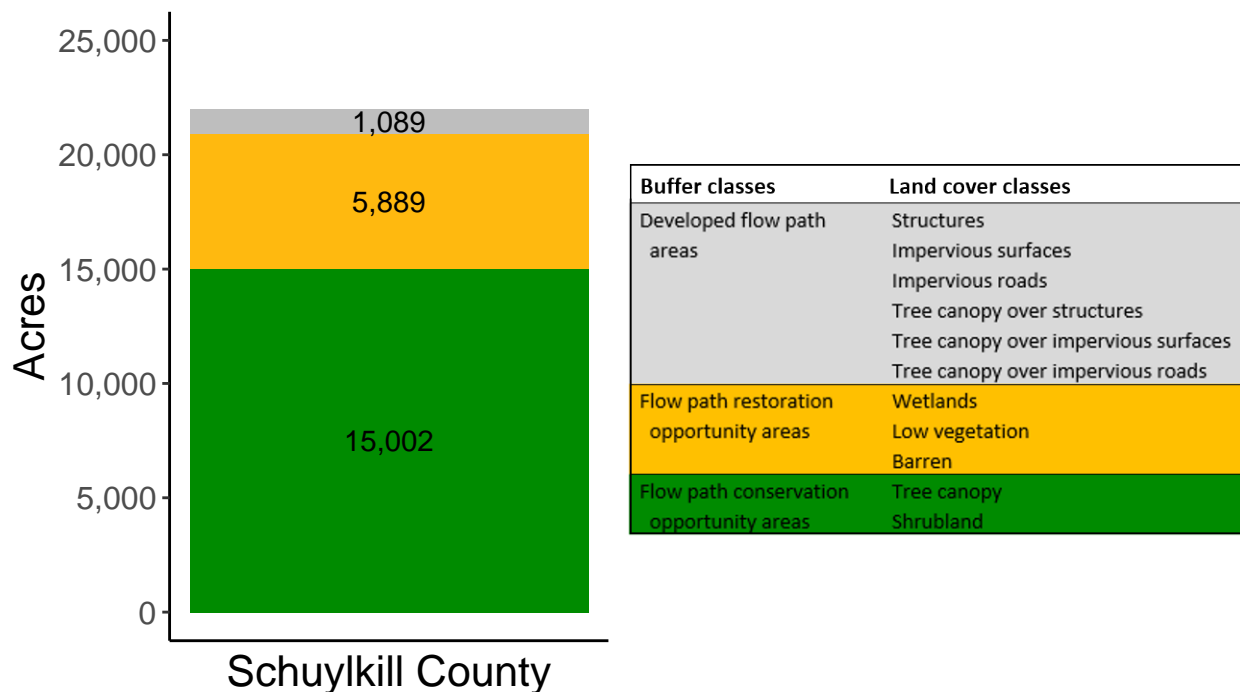
Created by: Chesapeake Conservancy, February 2019

Data Description

The buffer analysis is based on two Geospatial Information Systems (GIS) datasets created by Chesapeake Conservancy and partners. The enhanced flow path water network dataset was derived from 2006 & 2008 PAMAP Statewide digital elevation models (DEMs), developed from Lidar data. Channel heads were assigned where upslope drainage accumulation reached 60 acres. Flow paths were widened based on US Geological Survey regional curves and enhanced with high-resolution land cover. The high-resolution land cover dataset was derived from 2013 National Agriculture Inventory Program imagery. Both datasets have a spatial resolution of 1 meter. Pixels from the high-resolution land cover dataset within 35 ft. and 100 ft. distances of the enhanced flow path water network were considered in the buffer analysis. For more information and to download datasets, go to www.ChesapeakeConservancy.org and search for “data downloader.”

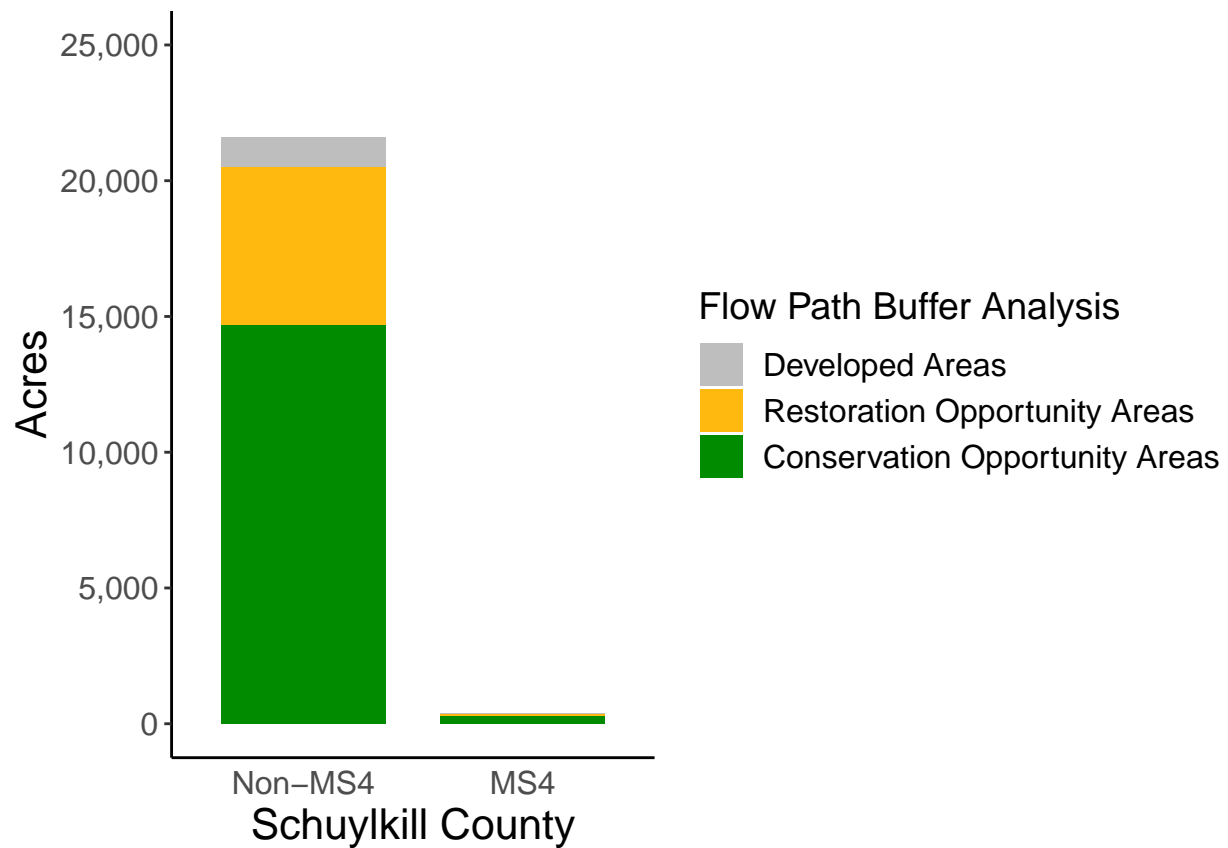
County Summary

Schuykill County contains a total of 5,889 acres of flow path restoration opportunity area, and has 68.25% forest buffer coverage. Schuykill County has incomplete buffer data coverage.



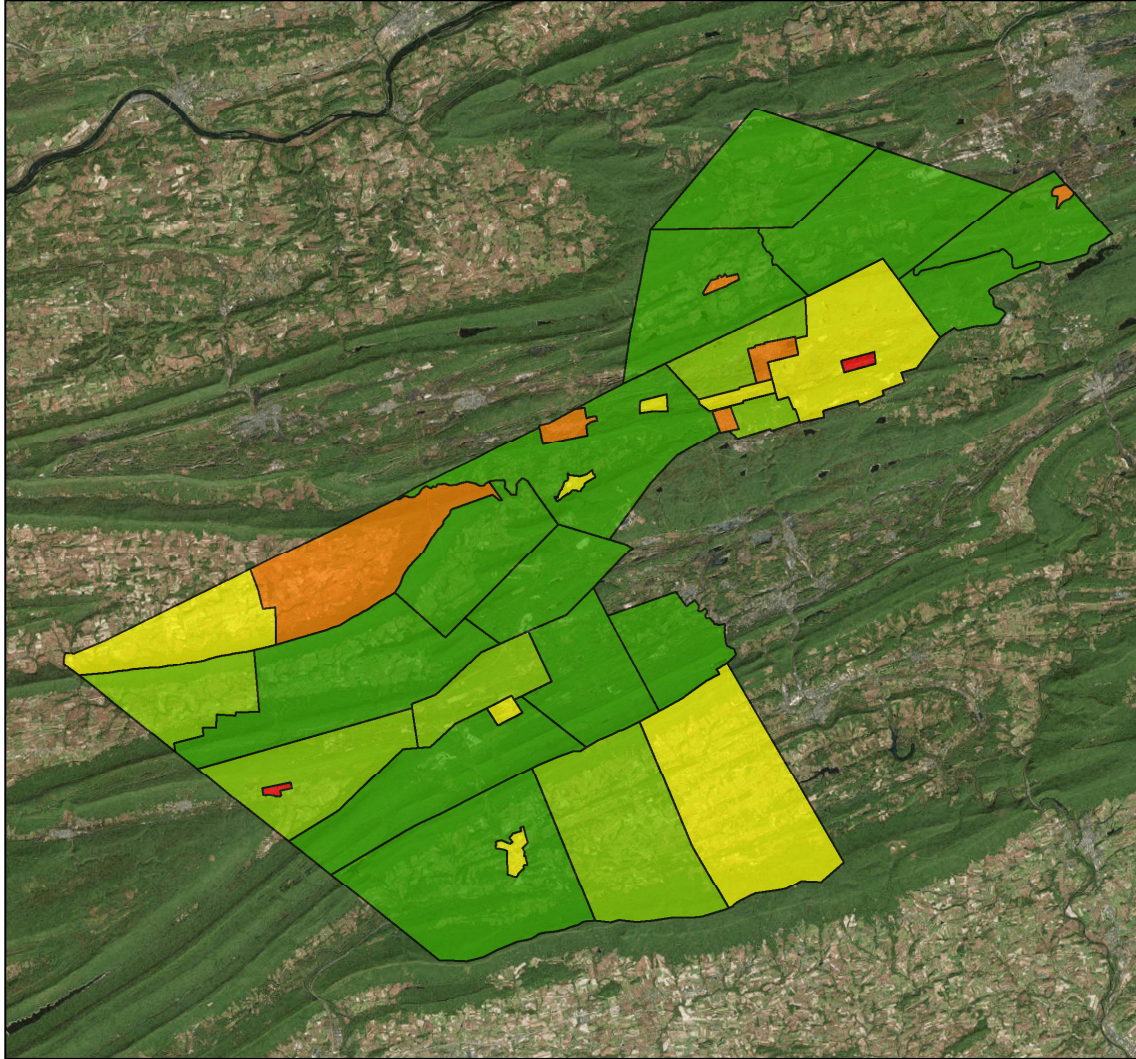
Municipal Separate Storm Sewer System (MS4) Regulated Municipality Summary

Totals by Municipalities

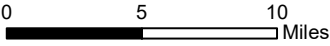


Averages for MS4 and Non-MS4 Municipalities

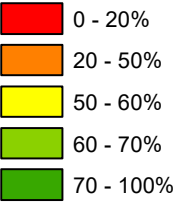
	Non-MS4	MS4
Conservation Opportunity Areas (Acres)	460	142
Restoration Opportunity Areas (Acres)	181	48
Developed Areas (Acres)	33	10
Total Buffer Acres	674	200
Percent Forest Buffer Coverage (%)	61.51	48.51



Schuylkill County Municipalities

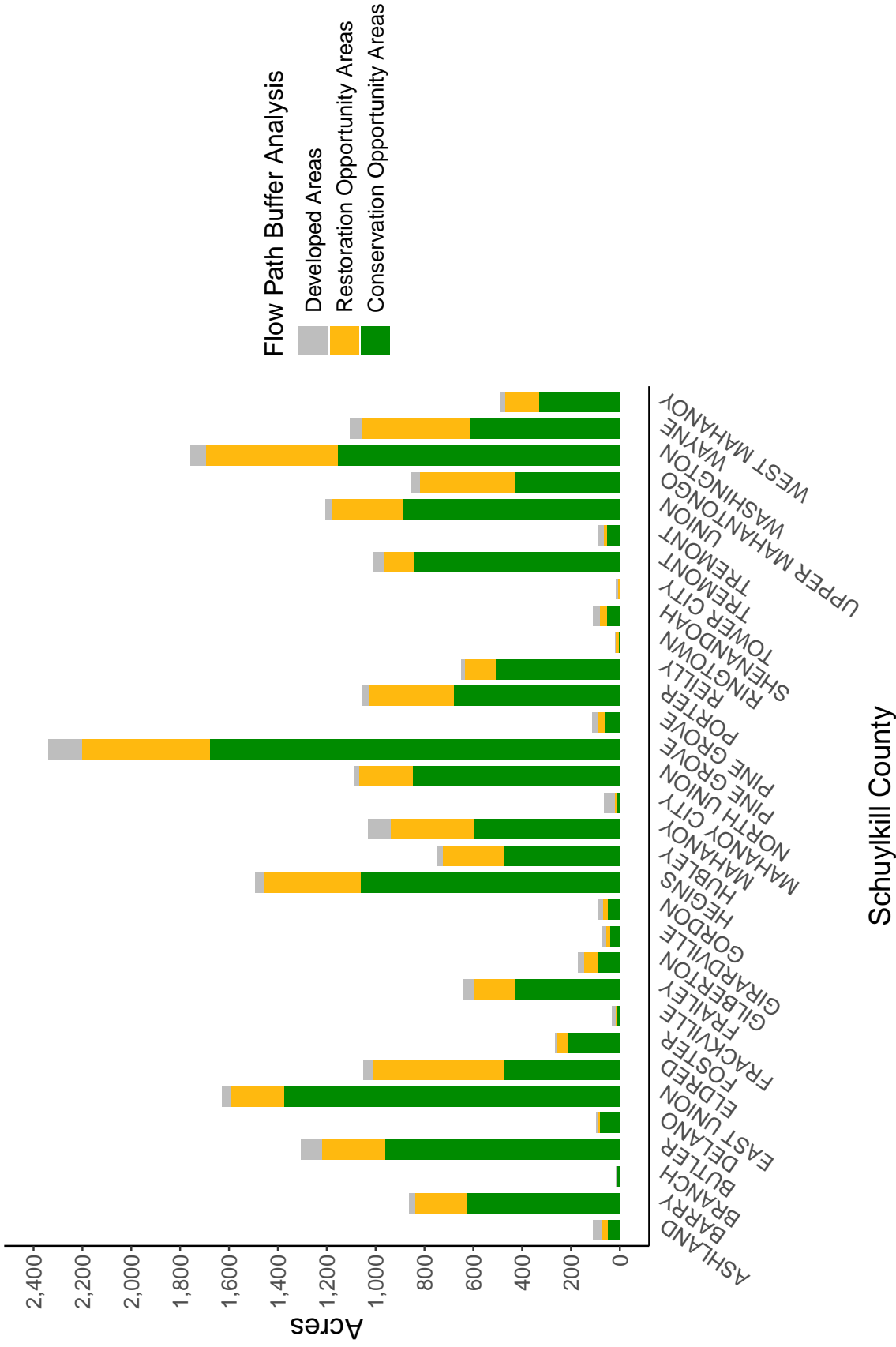


100' Buffer Coverage (%)



Municipality	MS4	Total 100 ft buffer acres	Conservation opportunity areas (acres)	Restoration opportunity areas (acres)	Developed areas (acres)	Percent forest buffer coverage (%)
ASHLAND	0	112	51	26	35	45.44
BARRY	0	864	628	212	23	72.70
BRANCH	0	15	15	0	0	99.96
BUTLER	0	1,304	962	257	85	73.78
DELANO	0	96	81	9	6	84.43
EAST UNION	0	1,626	1,374	219	34	84.48
ELDRED	0	1,049	472	538	39	44.98
FOSTER	0	266	212	48	6	79.69
FRACKVILLE	0	33	11	8	13	35.09
FRAILEY	0	645	430	170	45	66.63
GILBERTON	0	171	92	54	25	53.65
GIRARDVILLE	0	73	41	14	18	55.88
GORDON	0	87	51	17	19	58.71
HEGINS	0	1,492	1,063	395	34	71.27
HUBLEY	0	748	478	247	23	63.96
MAHANAY	0	1,032	599	341	92	58.04
MAHANAY CITY	0	64	11	9	44	16.76
NORTH UNION	0	1,088	847	219	22	77.88
PINE GROVE	0	2,339	1,677	526	136	71.71
PINE GROVE	0	113	61	27	25	53.49
PORTER	0	1,056	682	343	31	64.62
REILLY	0	650	508	128	14	78.17
RINGTOWN	0	17	7	10	1	37.60
SHENANDOAH	0	110	53	29	28	48.27
TOWER CITY	0	17	3	5	9	17.65
TREMONT	0	1,010	841	122	47	83.25
TREMONT	0	88	51	16	22	57.81
UNION	0	1,205	888	291	26	73.68
UPPER MAHANTONGO	0	857	432	387	38	50.36
WASHINGTON	0	1,757	1,155	541	62	65.72
WAYNE	0	1,106	614	444	47	55.55
WEST MAHANAY	0	492	330	141	21	67.11
KLINE	1	375	279	89	7	74.34
MCADOO	1	26	6	7	13	22.68

Non-MS4 Regulated Municipalities



MS4 Regulated Municipalities

