

# Snyder County Forest Buffer Summary

## 100 ft. Width

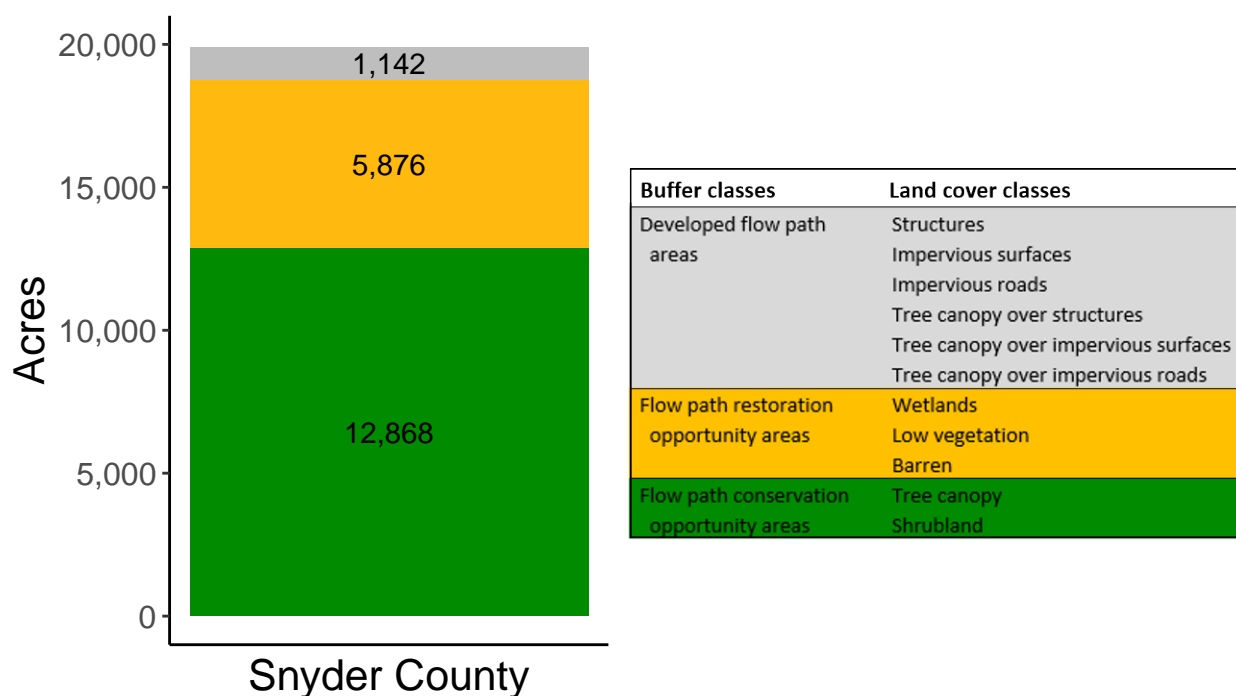
*Created by: Chesapeake Conservancy, February 2019*

### Data Description

The buffer analysis is based on two Geospatial Information Systems (GIS) datasets created by Chesapeake Conservancy and partners. The enhanced flow path water network dataset was derived from 2006 & 2008 PAMAP Statewide digital elevation models (DEMs), developed from Lidar data. Channel heads were assigned where upslope drainage accumulation reached 60 acres. Flow paths were widened based on US Geological Survey regional curves and enhanced with high-resolution land cover. The high-resolution land cover dataset was derived from 2013 National Agriculture Inventory Program imagery. Both datasets have a spatial resolution of 1 meter. Pixels from the high-resolution land cover dataset within 35 ft. and 100 ft. distances of the enhanced flow path water network were considered in the buffer analysis. For more information and to download datasets, go to [www.ChesapeakeConservancy.org](http://www.ChesapeakeConservancy.org) and search for “data downloader.”

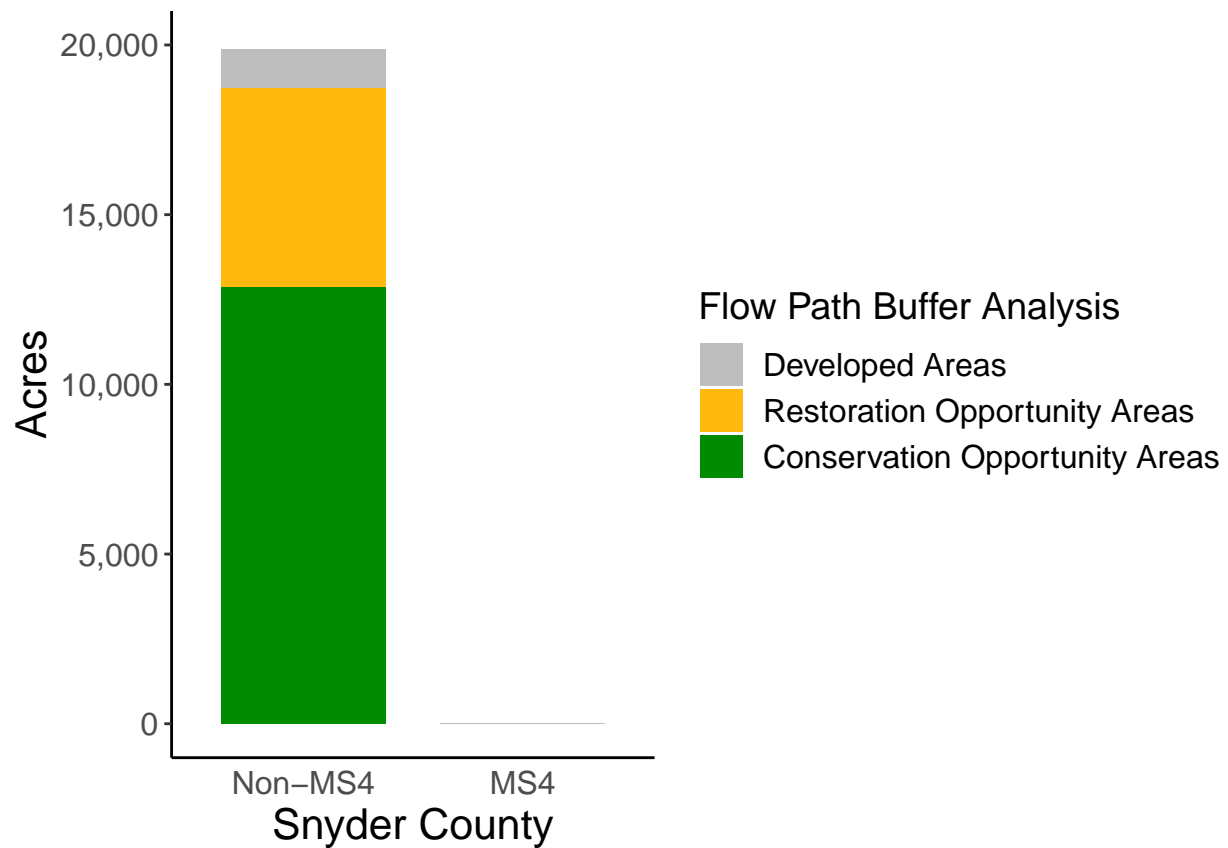
### County Summary

Snyder County contains a total of 5,876 acres of flow path restoration opportunity area, and has 64.71% forest buffer coverage. Snyder County has complete buffer data coverage.



# Municipal Separate Storm Sewer System (MS4) Regulated Municipality Summary

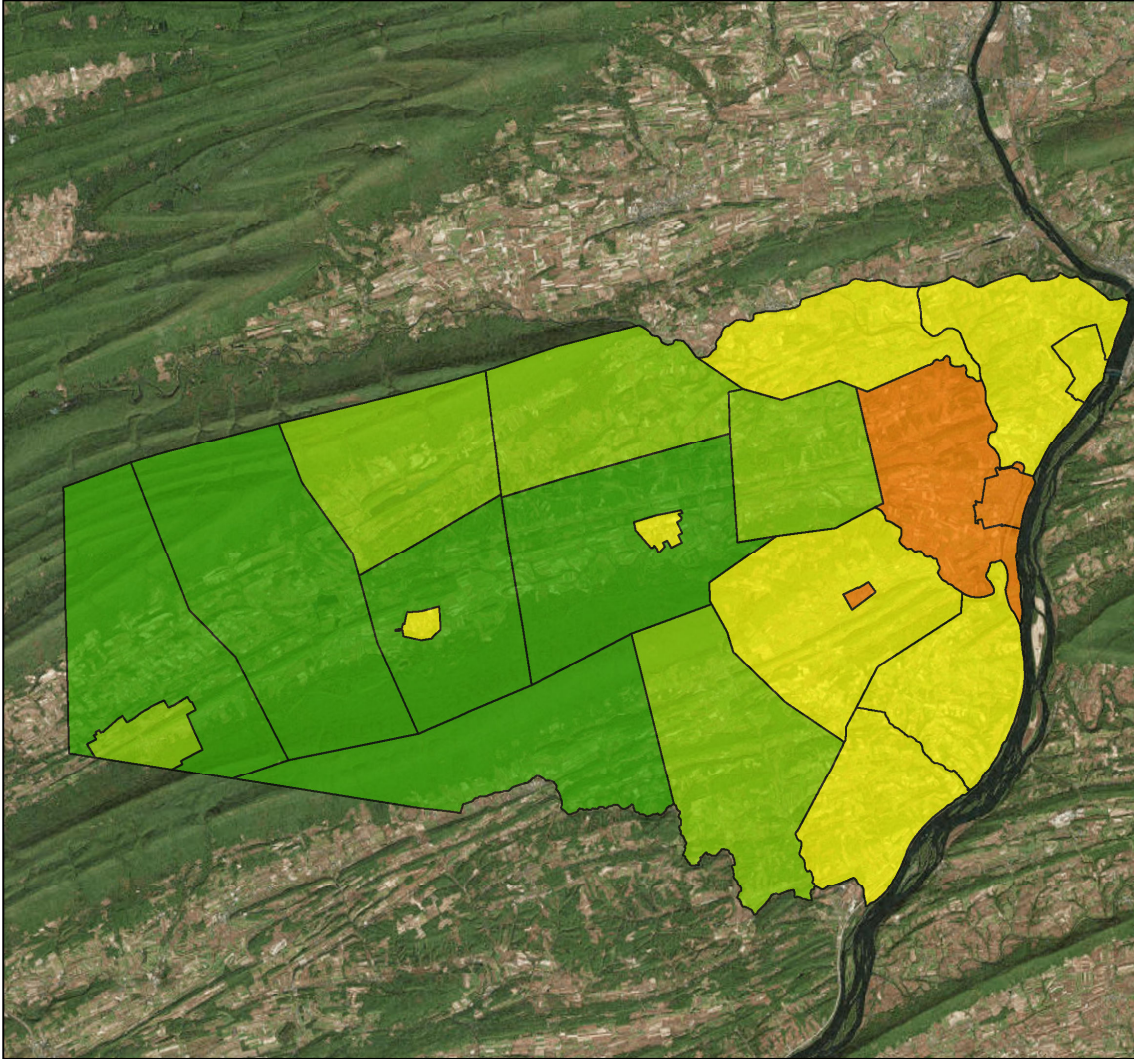
## Totals by Municipalities



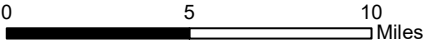
Snyder County does not contain any MS4 Municipalities.

## Averages for MS4 and Non-MS4 Municipalities

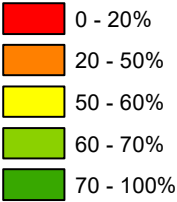
	Non-MS4	MS4
Conservation Opportunity Areas (Acres)	613	0
Restoration Opportunity Areas (Acres)	280	0
Developed Areas (Acres)	54	0
Total Buffer Acres	947	0
Percent Forest Buffer Coverage (%)	59.24	0.00



**Snyder County Municipalities**



**100' Buffer Coverage (%)**



Municipality	MS4	Total 100 ft buffer acres	Conservation opportunity areas (acres)	Restoration opportunity areas (acres)	Developed areas (acres)	Percent forest buffer coverage (%)
ADAMS	0	1,205	838	326	40	69.60
BEAVER	0	1,334	977	319	37	73.28
BEAVERTOWN	0	54	28	18	8	50.95
CENTER	0	1,140	710	381	50	62.22
CHAPMAN	0	802	441	287	75	54.91
FRANKLIN	0	1,756	1,240	424	91	70.64
FREEBURG	0	35	11	19	5	31.61
JACKSON	0	892	533	322	37	59.75
MCCLURE	0	259	166	73	20	64.16
MIDDLEBURG	0	79	47	18	14	58.73
MIDDLECREEK	0	919	569	284	65	61.97
MONROE	0	982	565	287	131	57.51
PENN	0	1,075	499	503	73	46.45
PERRY	0	1,483	890	510	83	60.02
SELINGSGROVE	0	161	62	55	44	38.33
SHAMOKIN DAM	0	171	87	38	46	51.05
SPRING	0	2,374	1,849	454	70	77.89
UNION	0	824	458	273	93	55.58
WASHINGTON	0	1,362	747	555	60	54.87
WEST BEAVER	0	1,444	1,072	326	46	74.26
WEST PERRY	0	1,533	1,078	402	53	70.32

\*

Non-MS4 Regulated Municipalities

