

Sullivan County Forest Buffer Summary

100 ft. Width

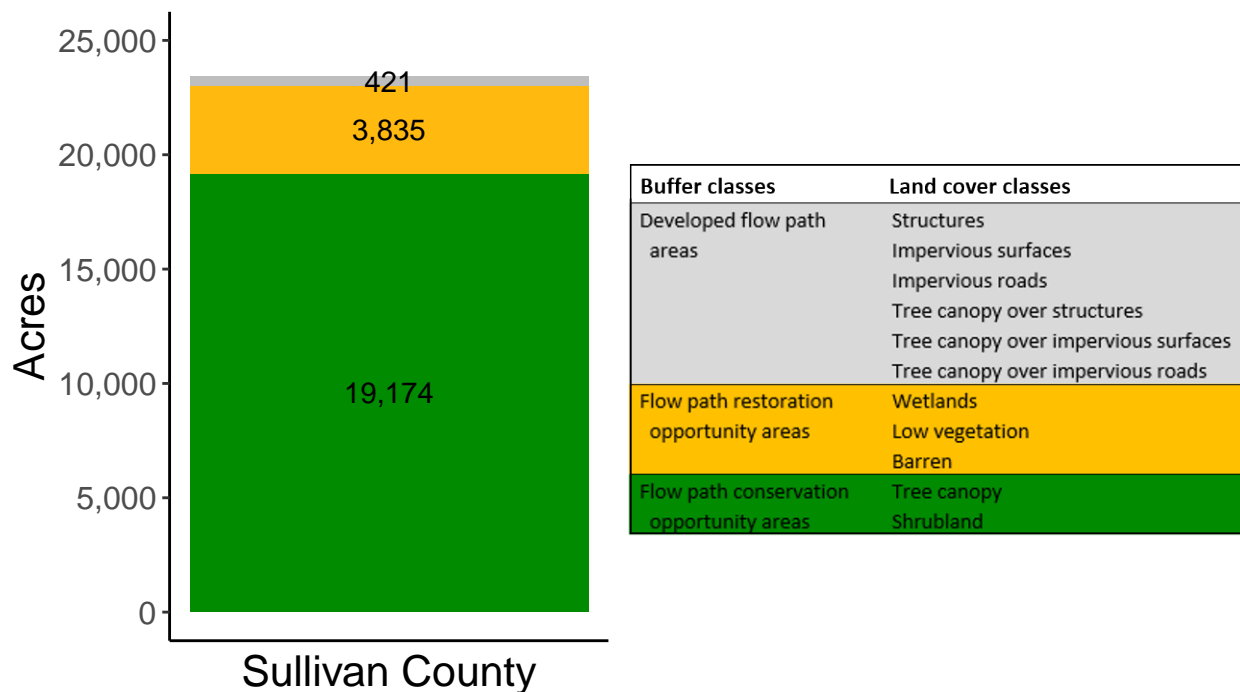
Created by: Chesapeake Conservancy, February 2019

Data Description

The buffer analysis is based on two Geospatial Information Systems (GIS) datasets created by Chesapeake Conservancy and partners. The enhanced flow path water network dataset was derived from 2006 & 2008 PAMAP Statewide digital elevation models (DEMs), developed from Lidar data. Channel heads were assigned where upslope drainage accumulation reached 60 acres. Flow paths were widened based on US Geological Survey regional curves and enhanced with high-resolution land cover. The high-resolution land cover dataset was derived from 2013 National Agriculture Inventory Program imagery. Both datasets have a spatial resolution of 1 meter. Pixels from the high-resolution land cover dataset within 35 ft. and 100 ft. distances of the enhanced flow path water network were considered in the buffer analysis. For more information and to download datasets, go to www.ChesapeakeConservancy.org and search for “data downloader.”

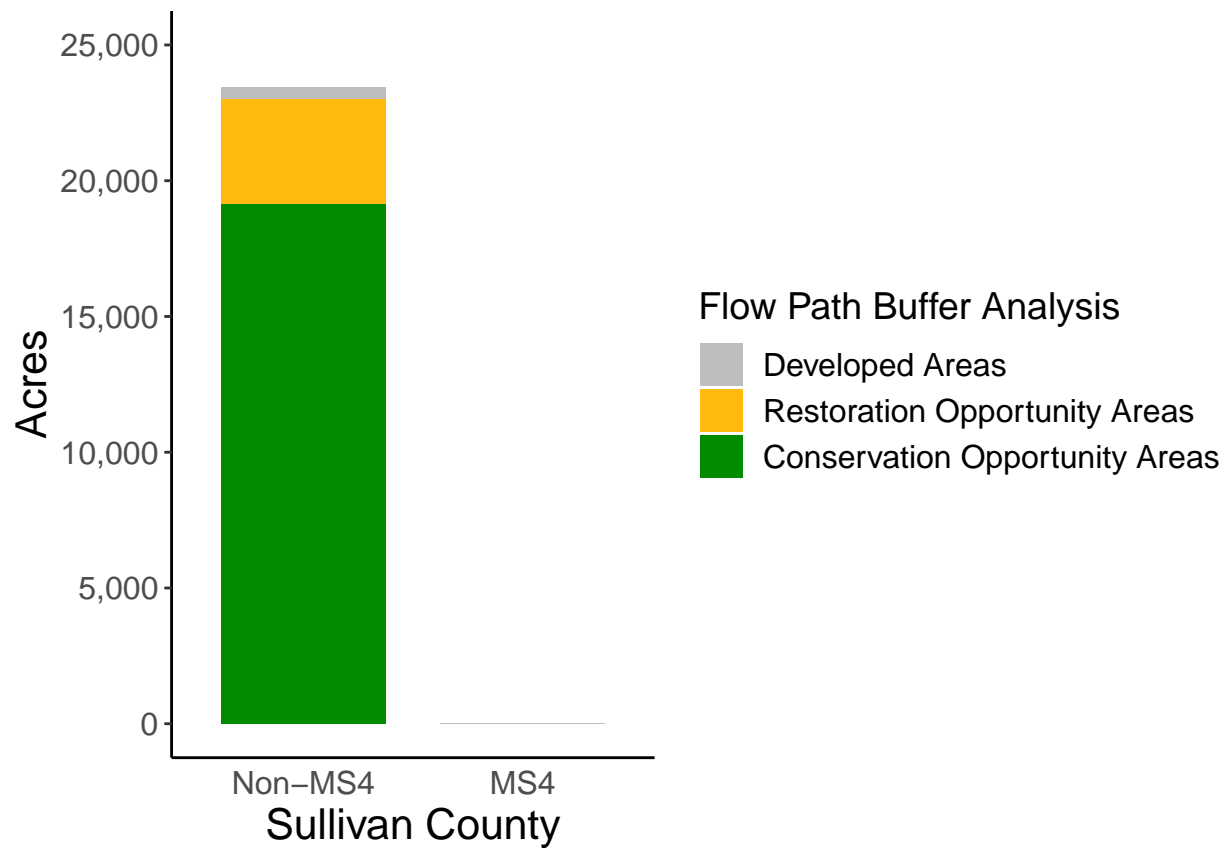
County Summary

Sullivan County contains a total of 3,835 acres of flow path restoration opportunity area, and has 81.83% forest buffer coverage. Sullivan County has complete buffer data coverage.



Municipal Separate Storm Sewer System (MS4) Regulated Municipality Summary

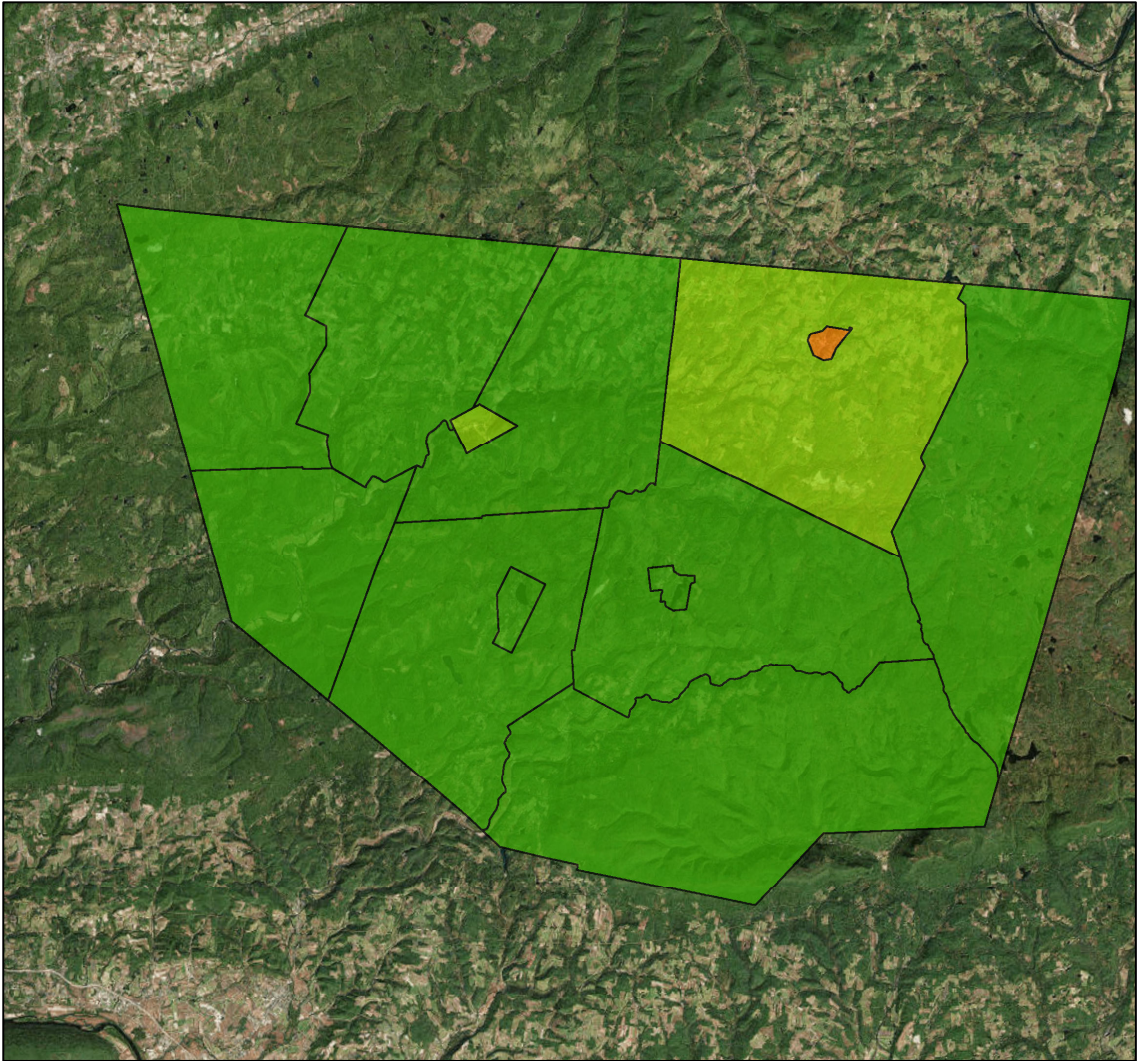
Totals by Municipalities



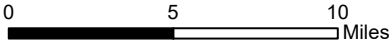
Sullivan County does not contain any MS4 Municipalities.

Averages for MS4 and Non-MS4 Municipalities

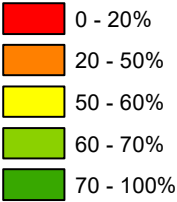
	Non-MS4	MS4
Conservation Opportunity Areas (Acres)	1475	0
Restoration Opportunity Areas (Acres)	295	0
Developed Areas (Acres)	32	0
Total Buffer Acres	1802	0
Percent Forest Buffer Coverage (%)	78.63	0.00



Sullivan County Municipalities



100' Buffer Coverage (%)



Municipality	MS4	Total 100 ft buffer acres	Conservation opportunity areas (acres)	Restoration opportunity areas (acres)	Developed areas (acres)	Percent forest buffer coverage (%)
CHERRY	0	3,092	2,154	871	66	69.68
COLLEY	0	3,388	2,418	937	33	71.36
DAVIDSON	0	3,568	3,221	284	64	90.27
DUSHORE	0	73	33	21	19	44.96
EAGLES MERE	0	89	71	14	3	80.14
ELKLAND	0	2,113	1,666	404	43	78.84
FORKS	0	2,376	1,959	367	50	82.44
FORKSVILLE	0	135	94	32	8	69.77
FOX	0	2,083	1,768	271	44	84.87
HILLSGROVE	0	1,510	1,275	208	27	84.43
LAPORTE	0	2,690	2,380	271	38	88.51
LAPORTE	0	62	53	6	4	84.43
SHREWSBURY	0	2,253	2,083	149	21	92.46

Non-MS4 Regulated Municipalities

