

# Tioga County Forest Buffer Summary

## 100 ft. Width

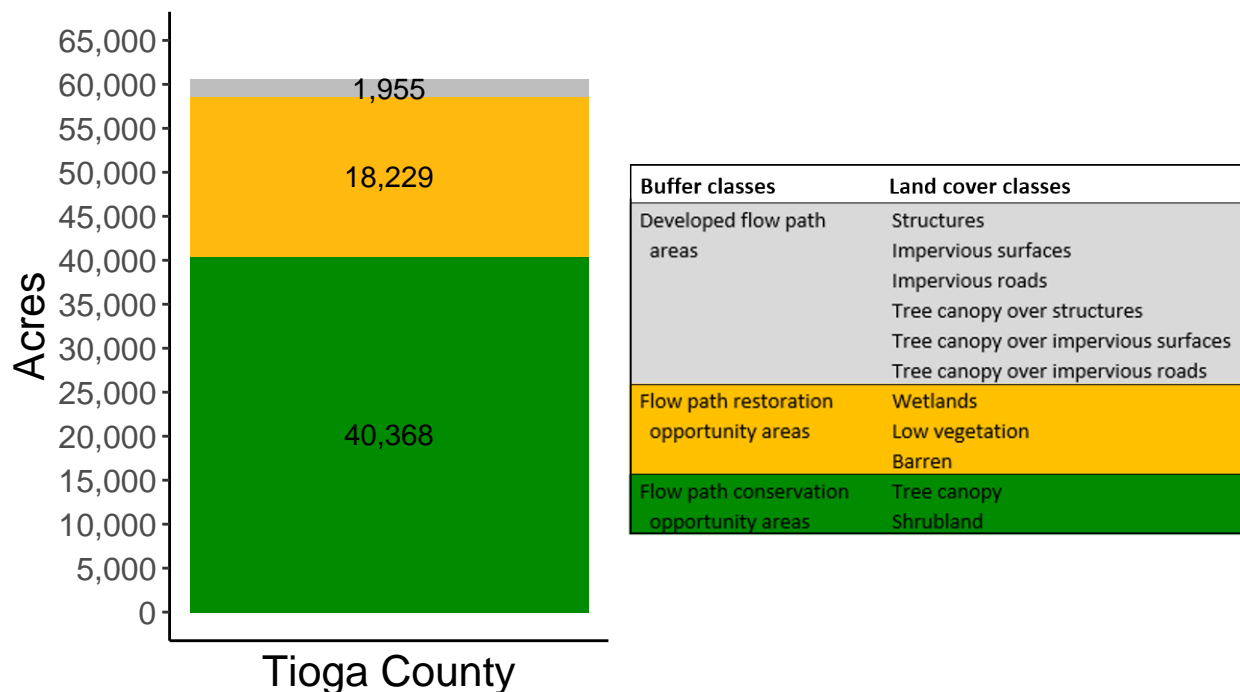
*Created by: Chesapeake Conservancy, February 2019*

### Data Description

The buffer analysis is based on two Geospatial Information Systems (GIS) datasets created by Chesapeake Conservancy and partners. The enhanced flow path water network dataset was derived from 2006 & 2008 PAMAP Statewide digital elevation models (DEMs), developed from Lidar data. Channel heads were assigned where upslope drainage accumulation reached 60 acres. Flow paths were widened based on US Geological Survey regional curves and enhanced with high-resolution land cover. The high-resolution land cover dataset was derived from 2013 National Agriculture Inventory Program imagery. Both datasets have a spatial resolution of 1 meter. Pixels from the high-resolution land cover dataset within 35 ft. and 100 ft. distances of the enhanced flow path water network were considered in the buffer analysis. For more information and to download datasets, go to [www.ChesapeakeConservancy.org](http://www.ChesapeakeConservancy.org) and search for “data downloader.”

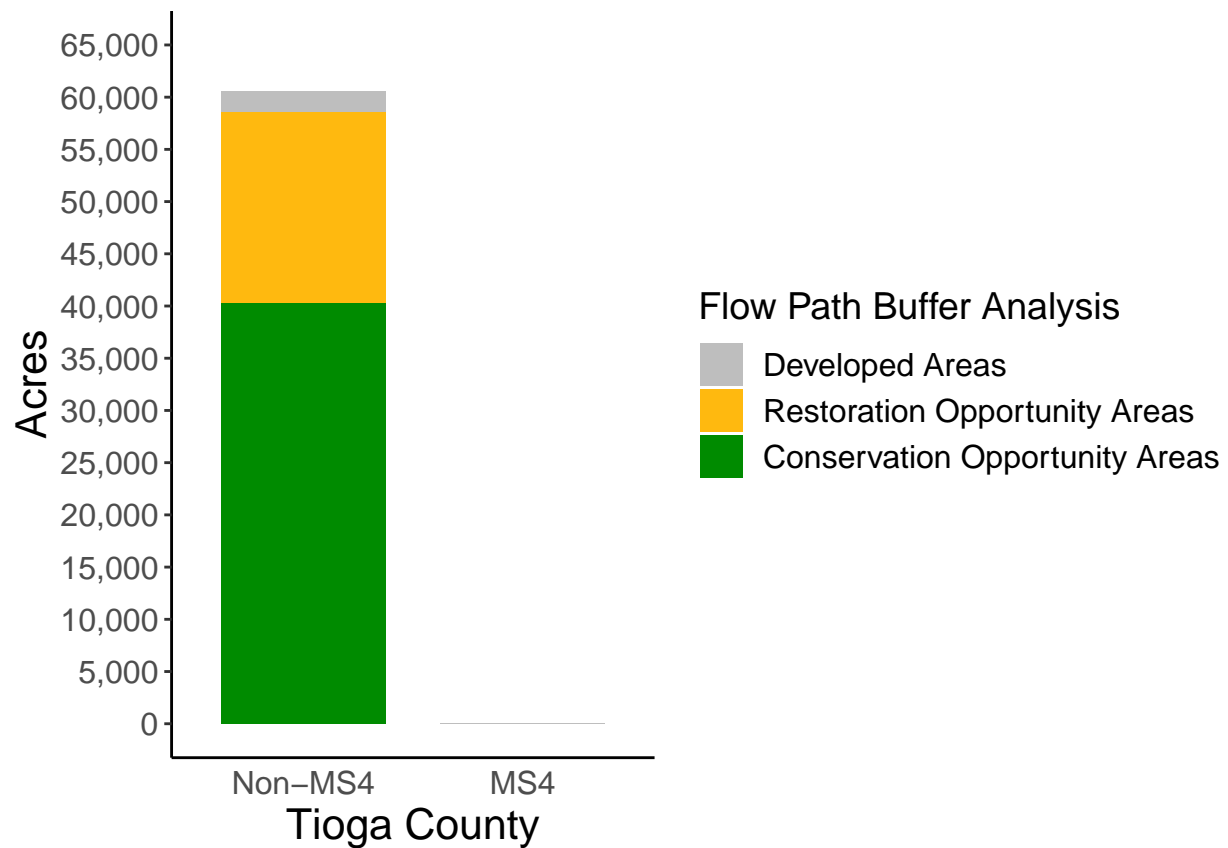
### County Summary

Tioga County contains a total of 18,229 acres of flow path restoration opportunity area, and has 66.67% forest buffer coverage. Tioga County has complete buffer data coverage.



# Municipal Separate Storm Sewer System (MS4) Regulated Municipality Summary

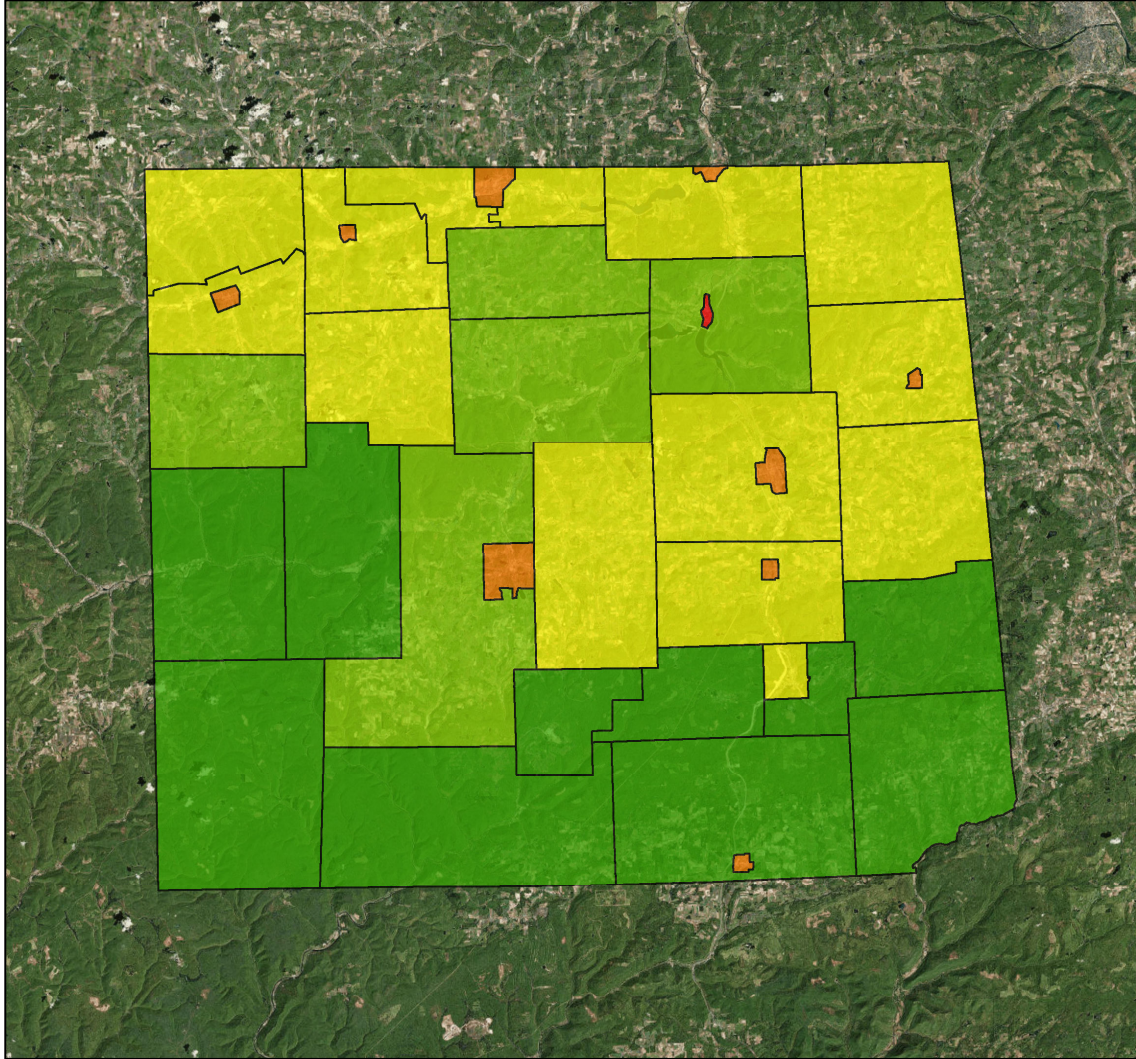
## Totals by Municipalities



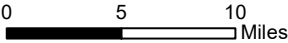
Tioga County does not contain any MS4 Municipalities.

## Averages for MS4 and Non-MS4 Municipalities

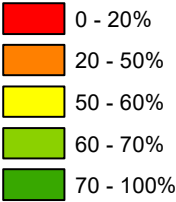
	Non-MS4	MS4
Conservation Opportunity Areas (Acres)	1035	0
Restoration Opportunity Areas (Acres)	467	0
Developed Areas (Acres)	50	0
Total Buffer Acres	1553	0
Percent Forest Buffer Coverage (%)	57.75	0.00



**Tioga County Municipalities**



**100' Buffer Coverage (%)**



Municipality	MS4	Total 100 ft buffer acres	Conservation opportunity areas (acres)	Restoration opportunity areas (acres)	Developed areas (acres)	Percent forest buffer coverage (%)
BLOSS	0	1,521	1,190	274	56	78.27
BLOSSBURG	0	359	200	98	60	55.85
BROOKFIELD	0	1,571	860	666	45	54.76
CHARLESTON	0	2,863	1,527	1,232	104	53.33
CHATHAM	0	1,767	942	772	53	53.31
CLYMER	0	1,636	1,038	545	53	63.47
COVINGTON	0	1,981	1,148	753	80	57.97
DEERFIELD	0	1,632	851	754	27	52.14
DELMAR	0	4,566	2,820	1,598	148	61.75
DUNCAN	0	1,034	877	149	7	84.86
ELK	0	3,308	3,037	205	66	91.82
ELKLAND	0	234	51	159	24	21.83
FARMINGTON	0	1,532	945	548	39	61.71
GAINES	0	2,444	2,048	341	55	83.80
HAMILTON	0	698	581	91	25	83.34
JACKSON	0	2,233	1,150	1,001	83	51.48
KNOXVILLE	0	30	11	15	4	35.07
LAWRENCE	0	1,995	1,154	747	95	57.84
LAWRENCEVILLE	0	50	15	31	4	30.72
LIBERTY	0	3,252	2,478	703	72	76.18
LIBERTY	0	35	13	13	9	37.60
MANSFIELD	0	158	51	65	42	31.92
MIDDLEBURY	0	2,646	1,614	937	94	61.01
MORRIS	0	3,758	3,329	371	58	88.59
NELSON	0	742	409	315	18	55.07
OSCEOLA	0	706	408	280	18	57.81
PUTNAM	0	92	34	49	9	36.94
RICHMOND	0	2,873	1,575	1,156	142	54.80
ROSEVILLE	0	53	22	27	5	41.06
RUTLAND	0	1,858	1,052	762	44	56.63
SHIPPEN	0	2,309	1,922	329	58	83.23
SULLIVAN	0	2,365	1,201	1,101	63	50.78
TIOGA	0	2,188	1,483	621	84	67.76
TIOGA	0	69	11	54	3	16.52
UNION	0	2,369	1,866	446	56	78.79

(continued)

Municipality	MS4	Total 100 ft buffer acres	Conservation opportunity areas (acres)	Restoration opportunity areas (acres)	Developed areas (acres)	Percent forest buffer coverage (%)
WARD	0	1,796	1,520	249	27	84.62
WELLSBORO	0	331	160	107	64	48.38
WESTFIELD	0	1,403	737	616	50	52.54
WESTFIELD	0	94	36	46	12	38.54
*						

## Non-MS4 Regulated Municipalities

