

# Wyoming County Forest Buffer Summary

## 100 ft. Width

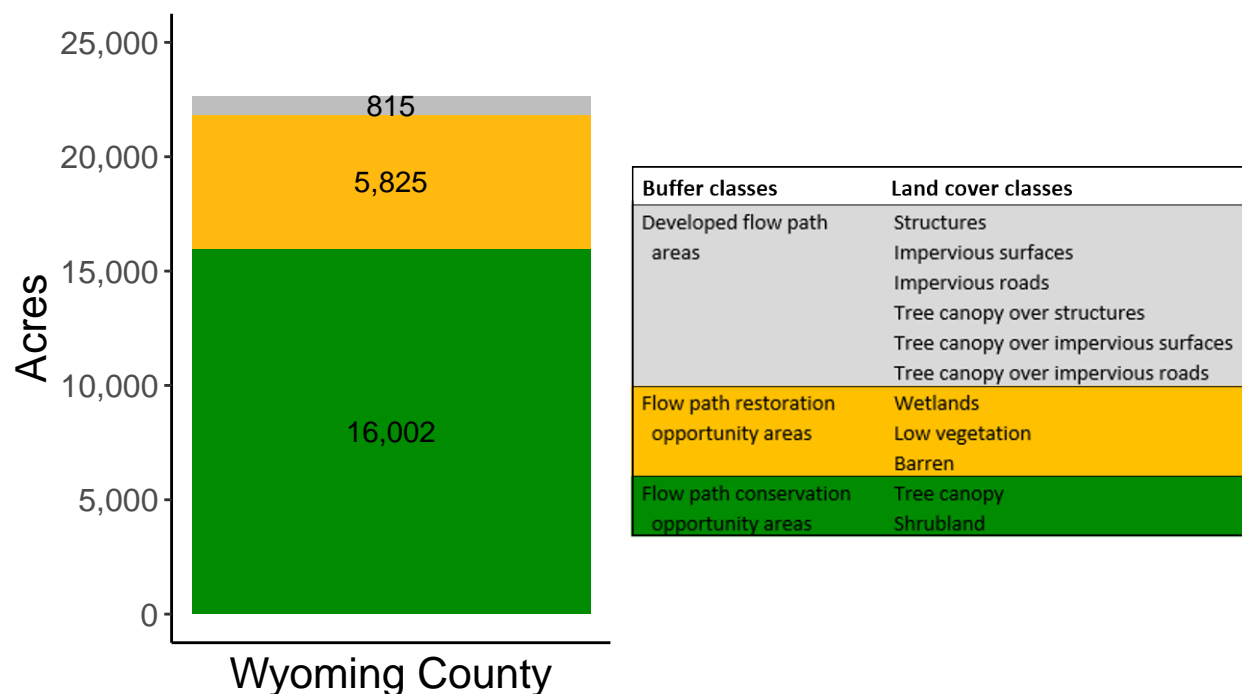
*Created by: Chesapeake Conservancy, February 2019*

### Data Description

The buffer analysis is based on two Geospatial Information Systems (GIS) datasets created by Chesapeake Conservancy and partners. The enhanced flow path water network dataset was derived from 2006 & 2008 PAMAP Statewide digital elevation models (DEMs), developed from Lidar data. Channel heads were assigned where upslope drainage accumulation reached 60 acres. Flow paths were widened based on US Geological Survey regional curves and enhanced with high-resolution land cover. The high-resolution land cover dataset was derived from 2013 National Agriculture Inventory Program imagery. Both datasets have a spatial resolution of 1 meter. Pixels from the high-resolution land cover dataset within 35 ft. and 100 ft. distances of the enhanced flow path water network were considered in the buffer analysis. For more information and to download datasets, go to [www.ChesapeakeConservancy.org](http://www.ChesapeakeConservancy.org) and search for “data downloader.”

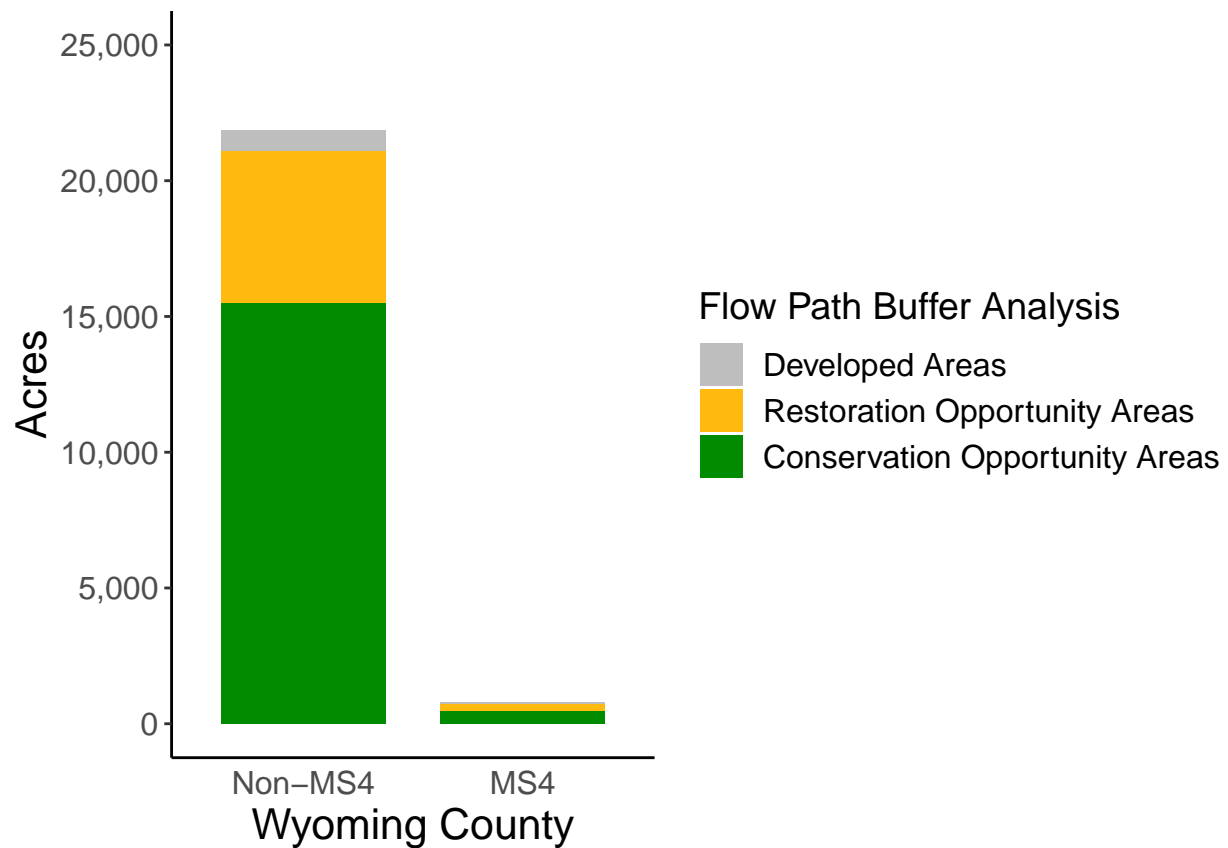
### County Summary

Wyoming County contains a total of 5,825 acres of flow path restoration opportunity area, and has 70.67% forest buffer coverage. Wyoming County has complete buffer data coverage.



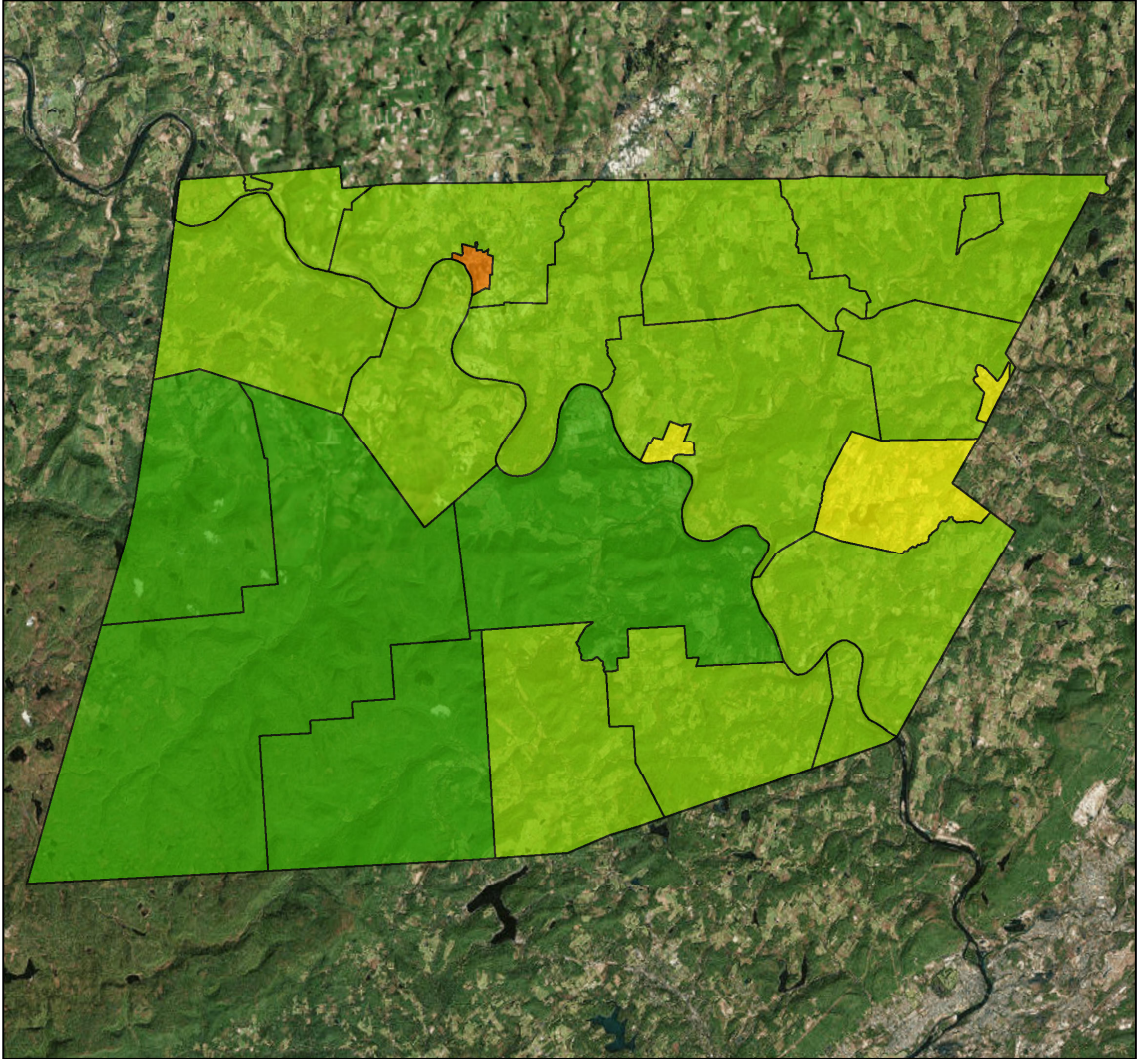
# Municipal Separate Storm Sewer System (MS4) Regulated Municipality Summary

## Totals by Municipalities

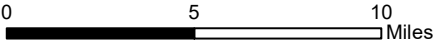


## Averages for MS4 and Non-MS4 Municipalities

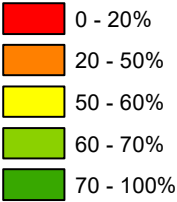
	Non-MS4	MS4
Conservation Opportunity Areas (Acres)	738	247
Restoration Opportunity Areas (Acres)	267	114
Developed Areas (Acres)	36	25
Total Buffer Acres	1041	386
Percent Forest Buffer Coverage (%)	66.65	58.08



**Wyoming County Municipalities**

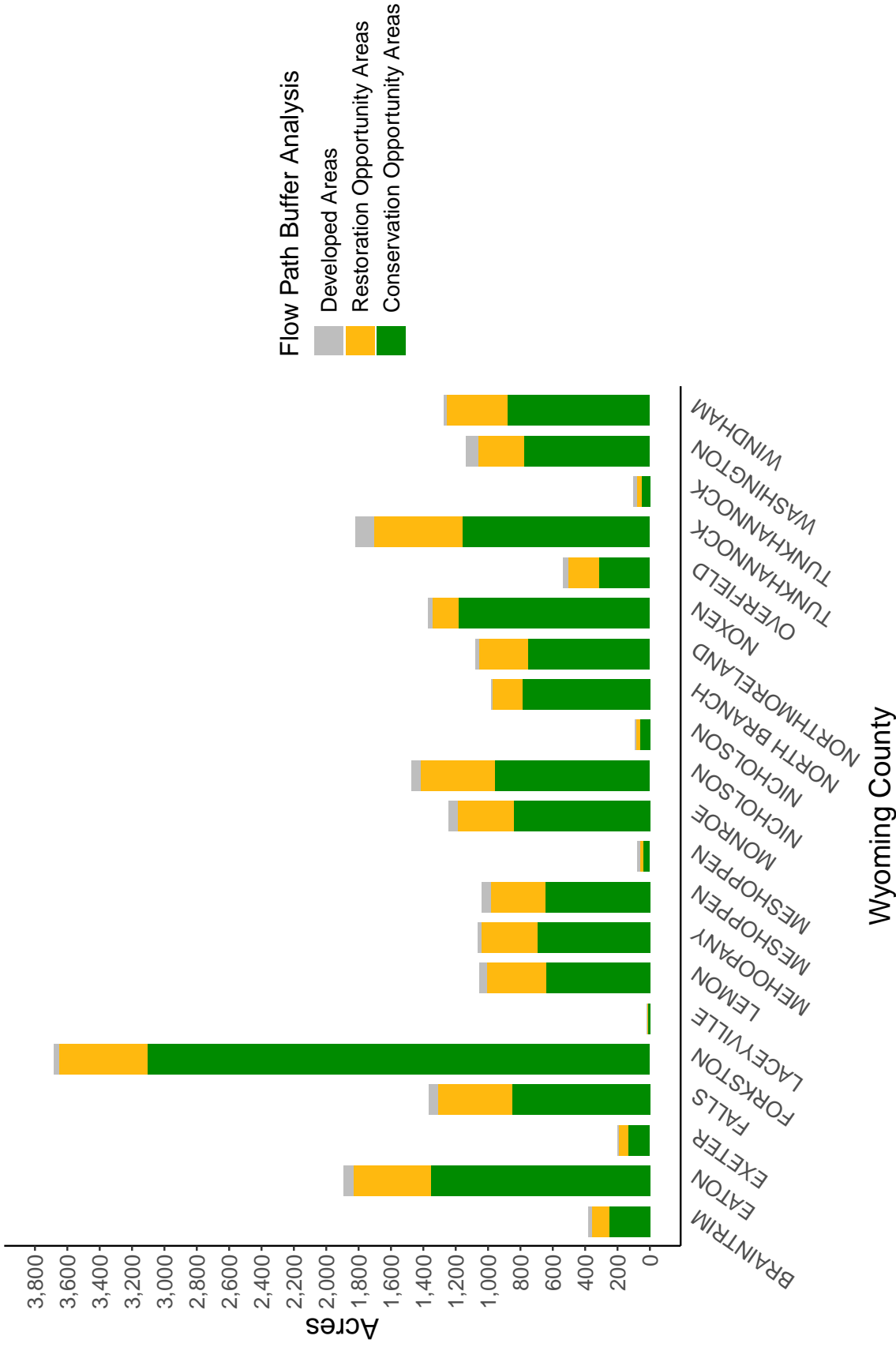


**100' Buffer Coverage (%)**



Municipality	MS4	Total 100 ft buffer acres	Conservation opportunity areas (acres)	Restoration opportunity areas (acres)	Developed areas (acres)	Percent forest buffer coverage (%)
BRAINTRIM	0	381	251	108	22	65.89
EATON	0	1,889	1,353	477	60	71.60
EXETER	0	201	135	56	9	67.41
FALLS	0	1,365	850	457	58	62.26
FORKSTON	0	3,681	3,107	543	30	84.42
LACEYVILLE	0	18	12	3	3	63.80
LEMON	0	1,051	644	361	47	61.26
MEHOOPANY	0	1,064	698	343	24	65.54
MESHOPPEN	0	1,040	645	338	56	62.06
MESHOPPEN	0	80	39	23	17	48.91
MONROE	0	1,244	841	348	54	67.66
NICHOLSON	0	1,472	959	456	57	65.17
NICHOLSON	0	91	60	23	7	65.97
NORTH BRANCH	0	982	791	181	9	80.59
NORTHMORELAND	0	1,080	754	301	24	69.83
NOXEN	0	1,370	1,183	158	29	86.36
OVERFIELD	0	534	316	188	30	59.15
TUNKHANNOCK	0	1,819	1,159	545	115	63.72
TUNKHANNOCK	0	99	50	29	20	50.34
WASHINGTON	0	1,137	780	284	74	68.57
WINDHAM	0	1,272	881	373	19	69.21
CLINTON	1	725	470	218	38	64.74
FACTORYVILLE	1	46	24	10	12	51.42

Non-MS4 Regulated Municipalities



MS4 Regulated Municipalities

