

Bedford County Forest Buffer Summary

35 ft. Width

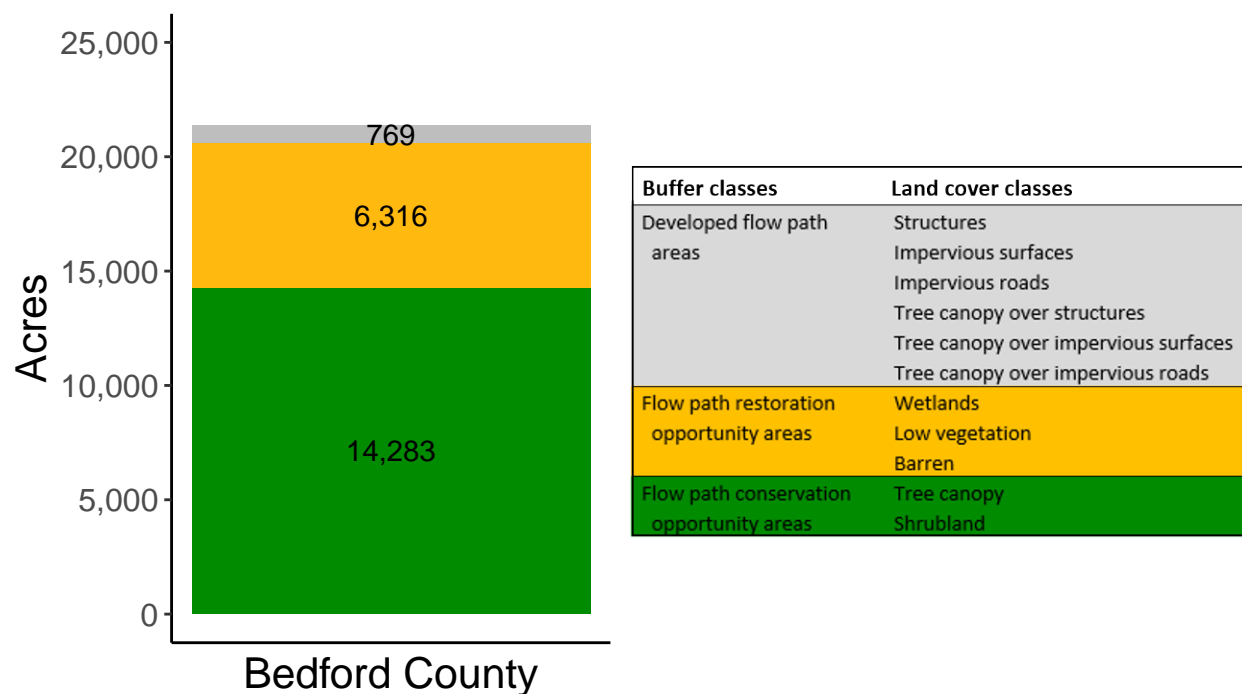
Created by: Chesapeake Conservancy, February 2019

Data Description

The buffer analysis is based on two Geospatial Information Systems (GIS) datasets created by Chesapeake Conservancy and partners. The enhanced flow path water network dataset was derived from 2006 & 2008 PAMAP Statewide digital elevation models (DEMs), developed from Lidar data. Channel heads were assigned where upslope drainage accumulation reached 60 acres. Flow paths were widened based on US Geological Survey regional curves and enhanced with high-resolution land cover. The high-resolution land cover dataset was derived from 2013 National Agriculture Inventory Program imagery. Both datasets have a spatial resolution of 1 meter. Pixels from the high-resolution land cover dataset within 35 ft. and 100 ft. distances of the enhanced flow path water network were considered in the buffer analysis. For more information and to download datasets, go to www.ChesapeakeConservancy.org and search for “data downloader.”

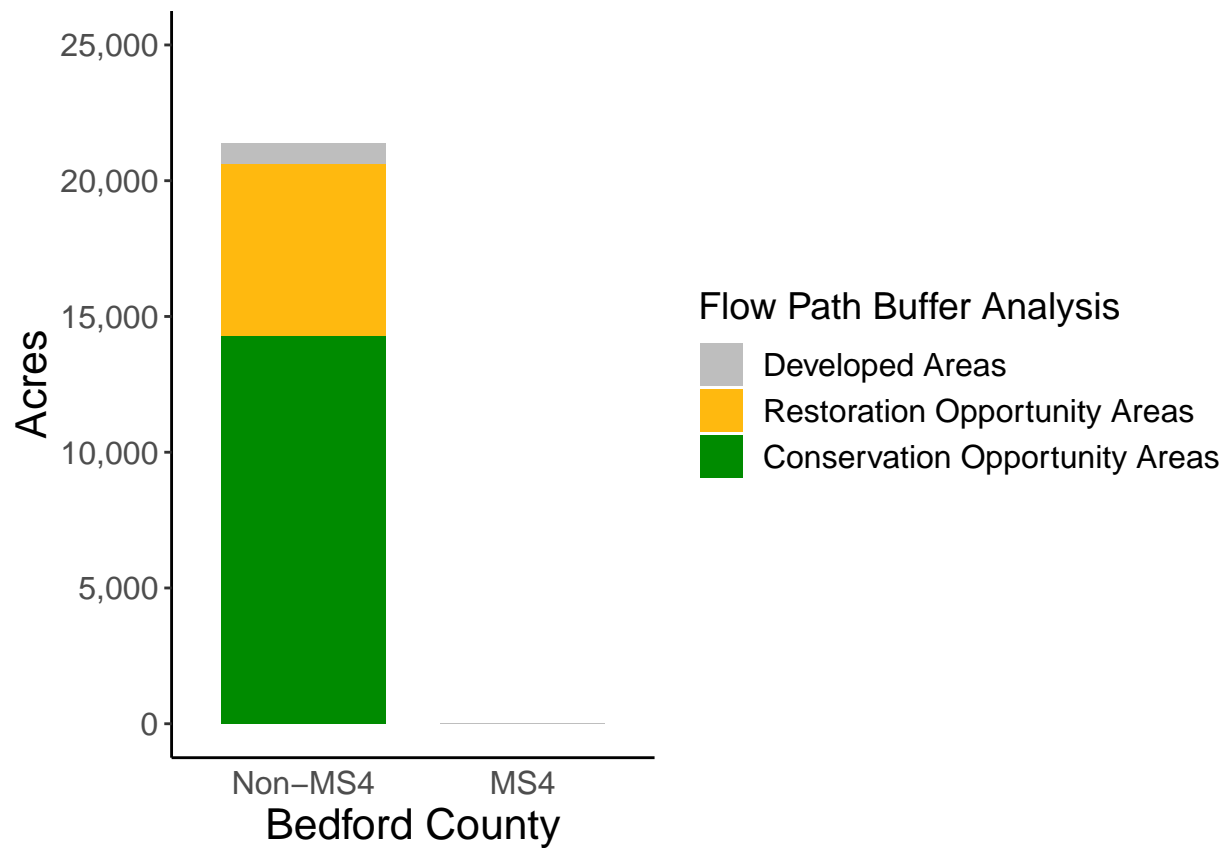
County Summary

Bedford County contains a total of 6,316 acres of flow path restoration opportunity area, and has 66.84% forest buffer coverage. Bedford County has complete buffer data coverage.



Municipal Separate Storm Sewer System (MS4) Regulated Municipality Summary

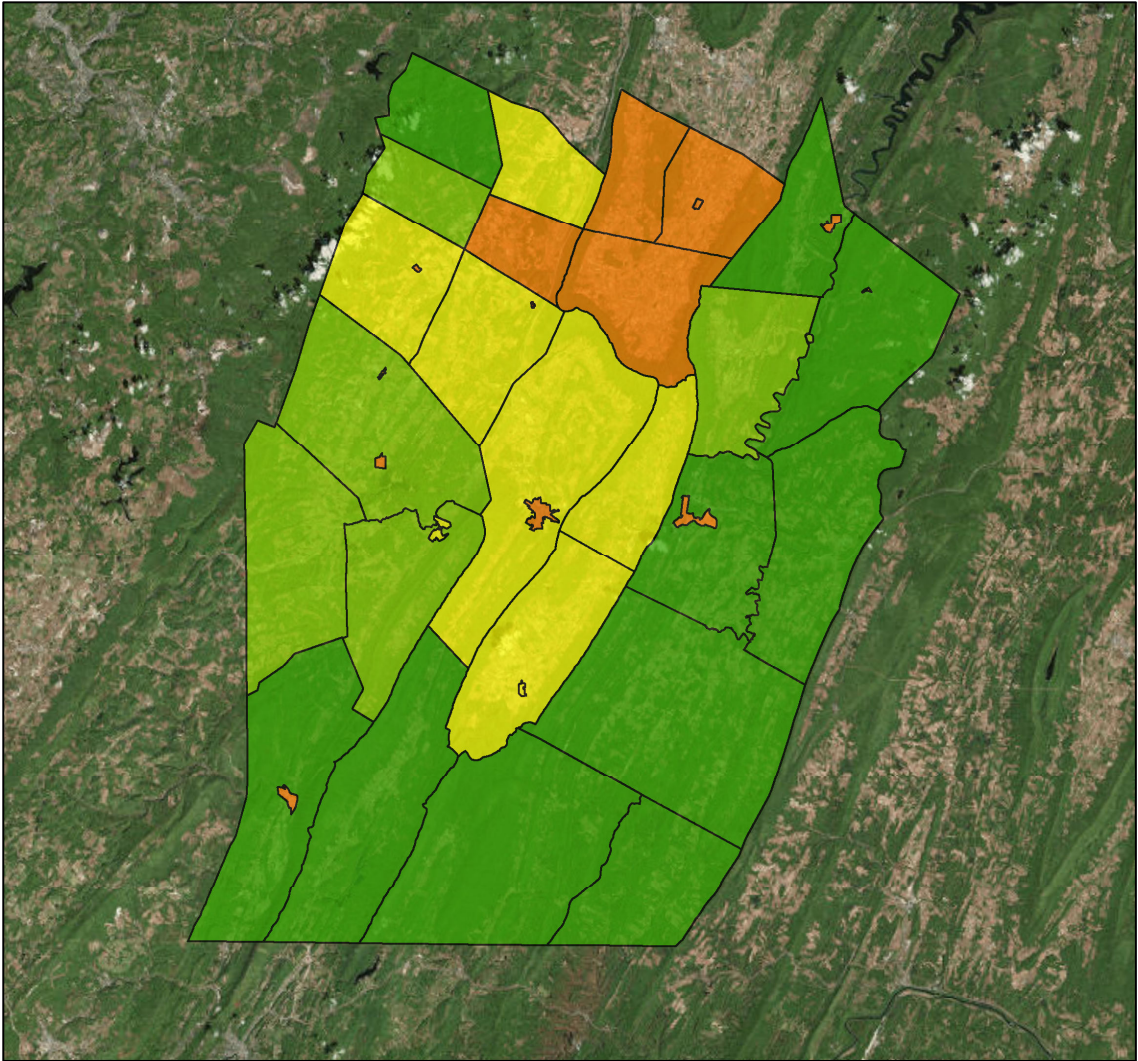
Totals by Municipalities



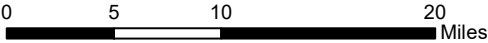
Bedford County does not contain any MS4 Municipalities.

Averages for MS4 and Non-MS4 Municipalities

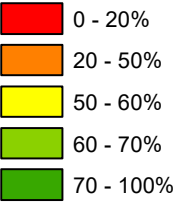
	Non-MS4	MS4
Conservation Opportunity Areas (Acres)	376	0
Restoration Opportunity Areas (Acres)	166	0
Developed Areas (Acres)	20	0
Total Buffer Acres	562	0
Percent Forest Buffer Coverage (%)	55.97	0.00



Bedford County Municipalities



35' Buffer Coverage (%)



Municipality	MS4	Total 35 ft buffer acres	Conservation opportunity areas (acres)	Restoration opportunity areas (acres)	Developed areas (acres)	Percent forest buffer coverage (%)
BEDFORD	0	1,443	818	556	69	56.71
BEDFORD	0	35	12	12	11	34.61
BLOOMFIELD	0	386	153	217	17	39.52
BROAD TOP	0	902	761	119	22	84.34
COALDALE	0	2	1	1	1	29.22
COLERAIN	0	892	448	426	18	50.19
CUMBERLAND VALLEY	0	1,295	943	323	30	72.79
EAST PROVIDENCE	0	1,085	857	190	38	78.99
EAST ST CLAIR	0	840	474	324	43	56.37
EVERETT	0	44	19	15	9	43.44
HARRISON	0	776	526	228	23	67.72
HOPEWELL	0	703	459	216	29	65.24
HOPEWELL	0	1	1	0	0	66.91
HYNDMAN	0	34	12	11	11	36.05
JUNIATA	0	1,017	700	281	36	68.83
KIMMEL	0	392	201	172	18	51.44
KING	0	362	145	194	24	39.95
LIBERTY	0	529	407	102	20	76.93
LINCOLN	0	292	179	102	11	61.38
LONDONDERRY	0	1,164	825	268	70	70.90
MANN	0	840	706	119	14	84.11
MANNS CHOICE	0	15	9	5	1	59.86
MONROE	0	1,754	1,345	384	24	76.71
NAPIER	0	1,253	808	400	45	64.47
NEW PARIS	0	2	1	1	0	31.66
PAVIA	0	421	369	44	8	87.70
PLEASANTVILLE	0	4	2	1	1	42.04
RAINSBURG	0	5	3	2	0	55.29
SAXTON	0	8	3	2	2	40.57
SHELLSBURG	0	9	3	4	2	37.03
SNAKE SPRING	0	584	321	232	31	54.98
SOUTH WOODBURY	0	690	293	369	28	42.49
SOUTHAMPTON	0	1,627	1,329	268	29	81.71
ST CLAIRSVILLE	0	0	0	0	0	16.79
WEST PROVIDENCE	0	863	626	202	36	72.49

(continued)

Municipality	MS4	Total 35 ft buffer acres	Conservation opportunity areas (acres)	Restoration opportunity areas (acres)	Developed areas (acres)	Percent forest buffer coverage (%)
WEST ST CLAIR	0	629	358	244	28	56.88
WOODBURY	0	462	164	279	19	35.56
WOODBURY	0	4	1	2	0	34.88

*

Non-MS4 Regulated Municipalities

