

Blair County Forest Buffer Summary

35 ft. Width

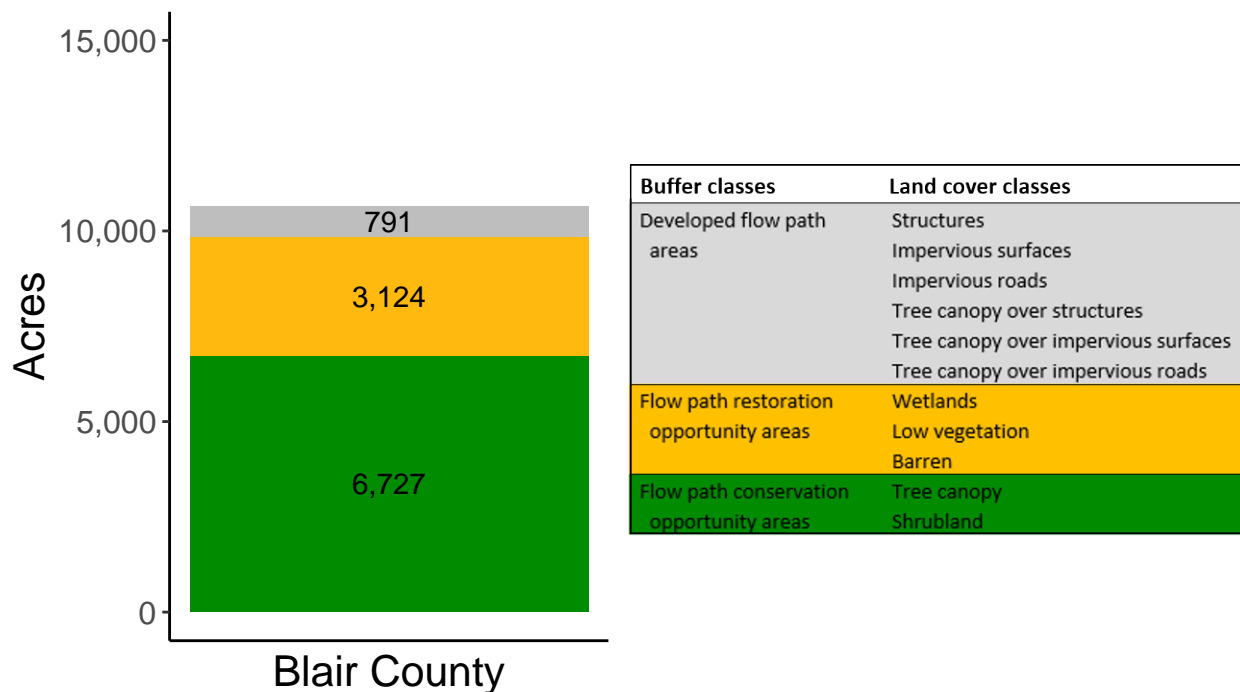
Created by: Chesapeake Conservancy, February 2019

Data Description

The buffer analysis is based on two Geospatial Information Systems (GIS) datasets created by Chesapeake Conservancy and partners. The enhanced flow path water network dataset was derived from 2006 & 2008 PAMAP Statewide digital elevation models (DEMs), developed from Lidar data. Channel heads were assigned where upslope drainage accumulation reached 60 acres. Flow paths were widened based on US Geological Survey regional curves and enhanced with high-resolution land cover. The high-resolution land cover dataset was derived from 2013 National Agriculture Inventory Program imagery. Both datasets have a spatial resolution of 1 meter. Pixels from the high-resolution land cover dataset within 35 ft. and 100 ft. distances of the enhanced flow path water network were considered in the buffer analysis. For more information and to download datasets, go to www.ChesapeakeConservancy.org and search for “data downloader.”

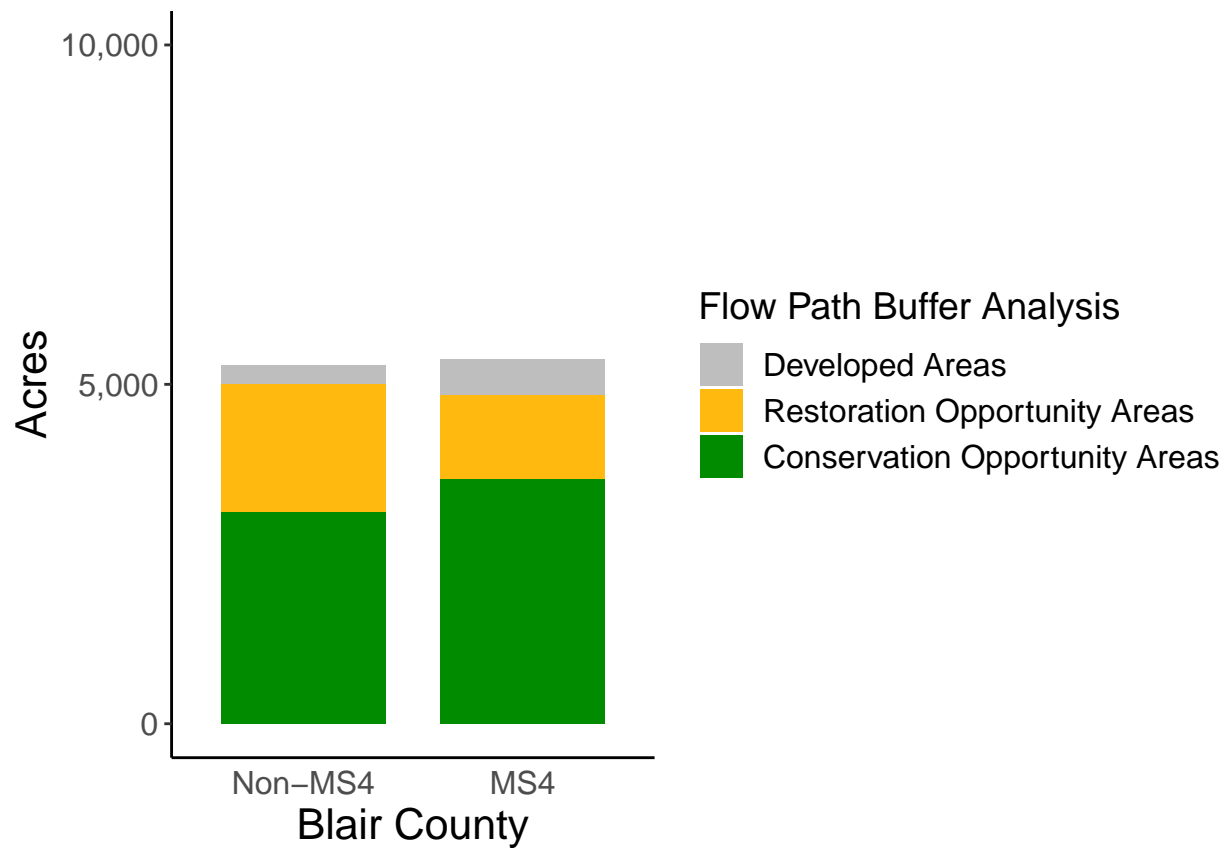
County Summary

Blair County contains a total of 3,124 acres of flow path restoration opportunity area, and has 63.21% forest buffer coverage. Blair County has complete buffer data coverage.



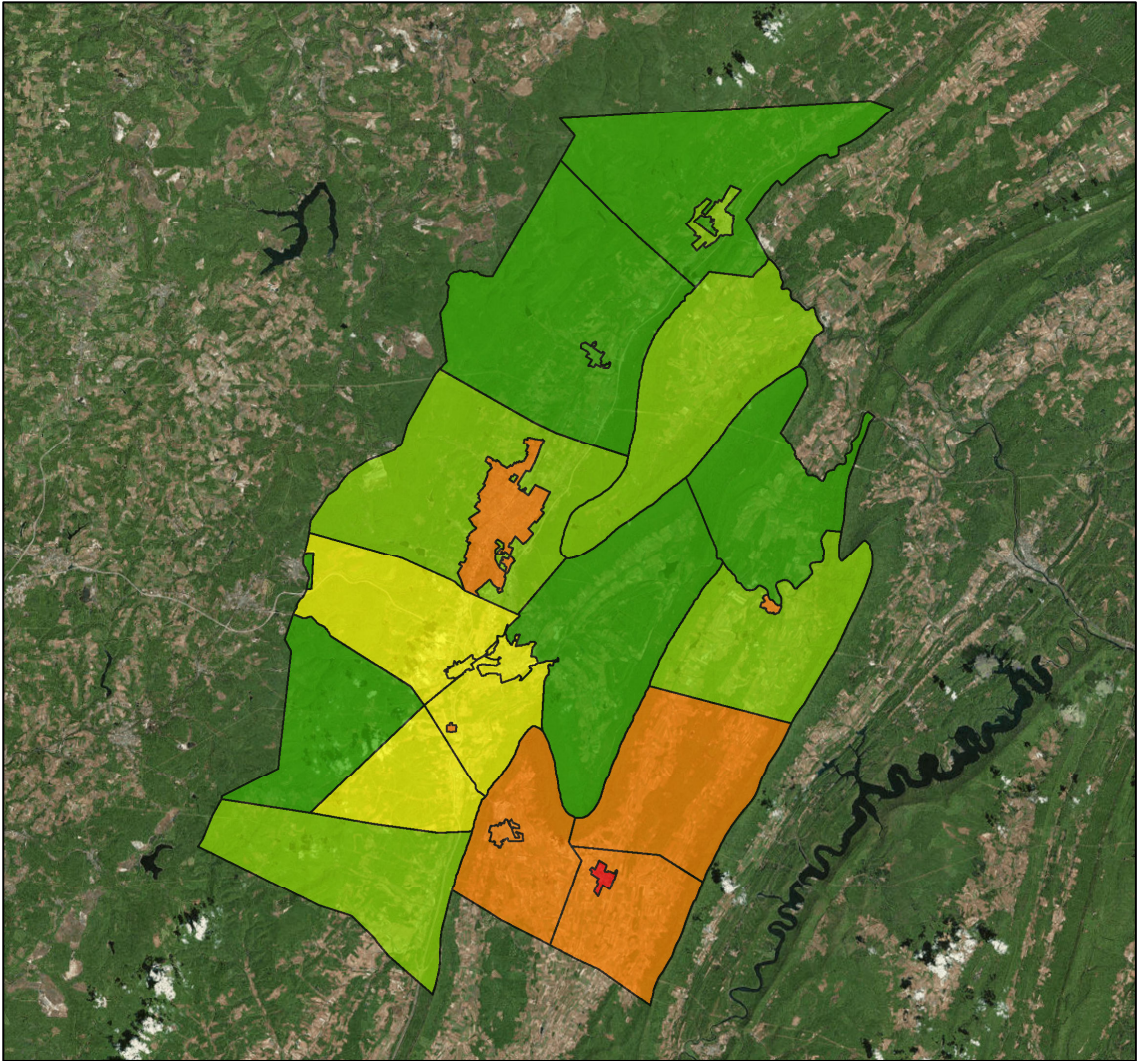
Municipal Separate Storm Sewer System (MS4) Regulated Municipality Summary

Totals by Municipalities

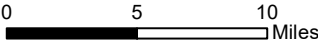


Averages for MS4 and Non-MS4 Municipalities

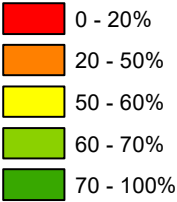
	Non-MS4	MS4
Conservation Opportunity Areas (Acres)	240	301
Restoration Opportunity Areas (Acres)	145	103
Developed Areas (Acres)	21	43
Total Buffer Acres	406	447
Percent Forest Buffer Coverage (%)	52.47	60.73



Blair County Municipalities

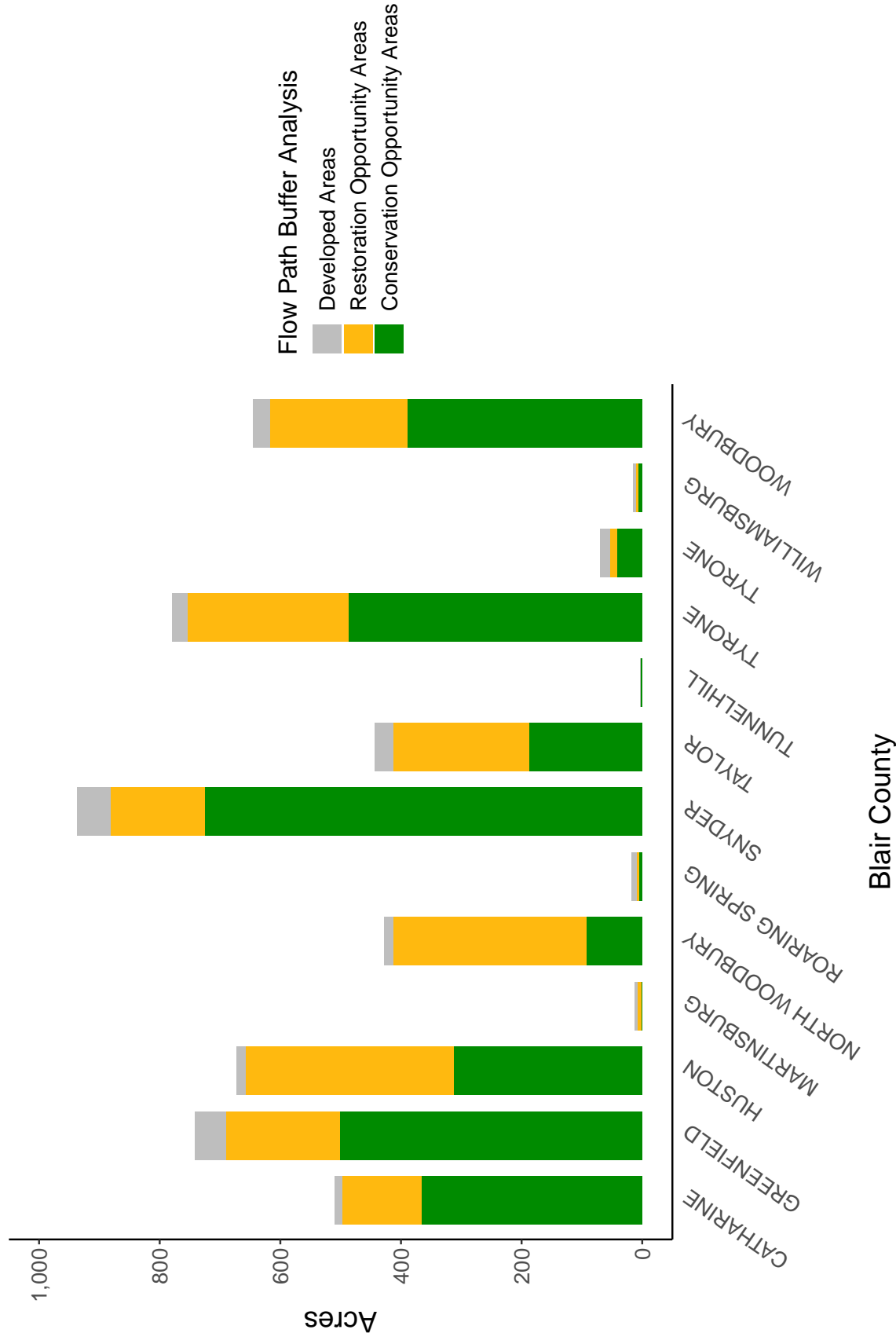


35' Buffer Coverage (%)



Municipality	MS4	Total 35 ft buffer acres	Conservation opportunity areas (acres)	Restoration opportunity areas (acres)	Developed areas (acres)	Percent forest buffer coverage (%)
CATHARINE	0	510	366	131	13	71.64
GREENFIELD	0	742	501	189	52	67.58
HUSTON	0	671	313	344	15	46.61
MARTINSBURG	0	13	2	6	5	14.48
NORTH WOODBURY	0	428	92	321	15	21.41
ROARING SPRING	0	18	5	4	9	25.68
SNYDER	0	938	725	157	55	77.31
TAYLOR	0	443	188	225	30	42.40
TUNNELHILL	0	4	3	0	0	90.23
TYRONE	0	781	487	267	26	62.39
TYRONE	0	69	42	11	16	61.17
WILLIAMSBURG	0	15	6	5	4	40.80
WOODBURY	0	645	390	227	28	60.37
ALLEGHENY	1	625	370	165	90	59.17
ALTOONA	1	238	66	52	119	27.86
ANTIS	1	1,210	895	243	73	73.92
BELLWOOD	1	3	2	0	0	83.64
BLAIR	1	348	200	127	22	57.36
DUNCANSVILLE	1	26	14	5	6	56.24
FRANKSTOWN	1	986	708	236	42	71.80
FREEDOM	1	390	231	127	32	59.15
HOLIDAYSBURG	1	78	42	20	15	54.19
JUNIATA	1	483	398	72	14	82.31
LOGAN	1	978	682	188	108	69.75
NEWRY	1	2	1	1	0	33.41

Non-MS4 Regulated Municipalities



MS4 Regulated Municipalities

