

Chester County Forest Buffer Summary

35 ft. Width

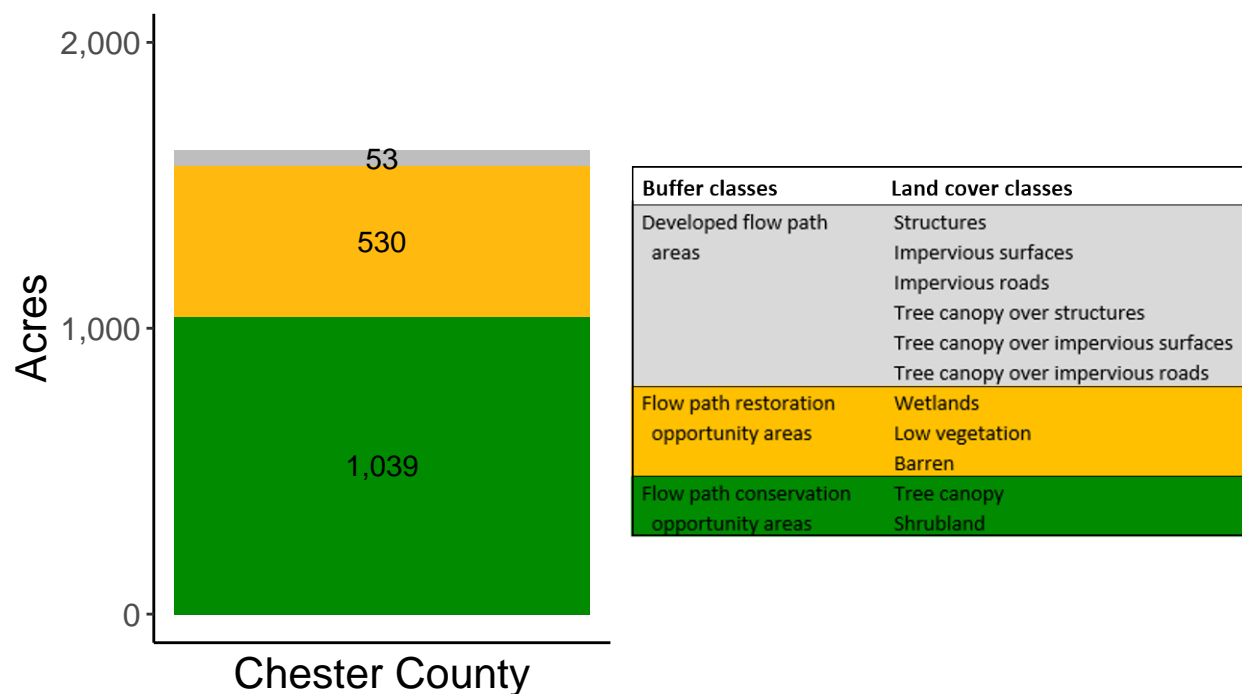
Created by: Chesapeake Conservancy, February 2019

Data Description

The buffer analysis is based on two Geospatial Information Systems (GIS) datasets created by Chesapeake Conservancy and partners. The enhanced flow path water network dataset was derived from 2006 & 2008 PAMAP Statewide digital elevation models (DEMs), developed from Lidar data. Channel heads were assigned where upslope drainage accumulation reached 60 acres. Flow paths were widened based on US Geological Survey regional curves and enhanced with high-resolution land cover. The high-resolution land cover dataset was derived from 2013 National Agriculture Inventory Program imagery. Both datasets have a spatial resolution of 1 meter. Pixels from the high-resolution land cover dataset within 35 ft. and 100 ft. distances of the enhanced flow path water network were considered in the buffer analysis. For more information and to download datasets, go to www.ChesapeakeConservancy.org and search for “data downloader.”

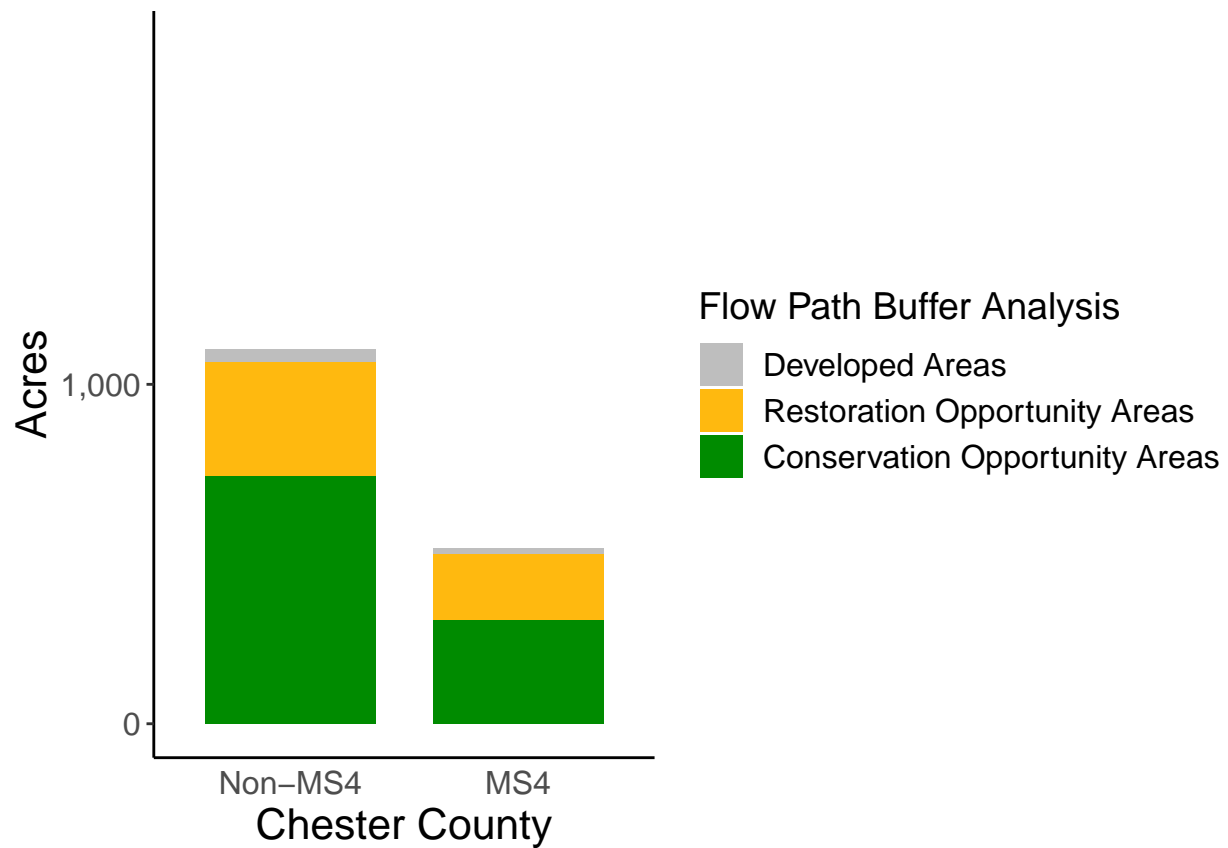
County Summary

Chester County contains a total of 530 acres of flow path restoration opportunity area, and has 64.09% forest buffer coverage. Chester County has incomplete buffer data coverage.



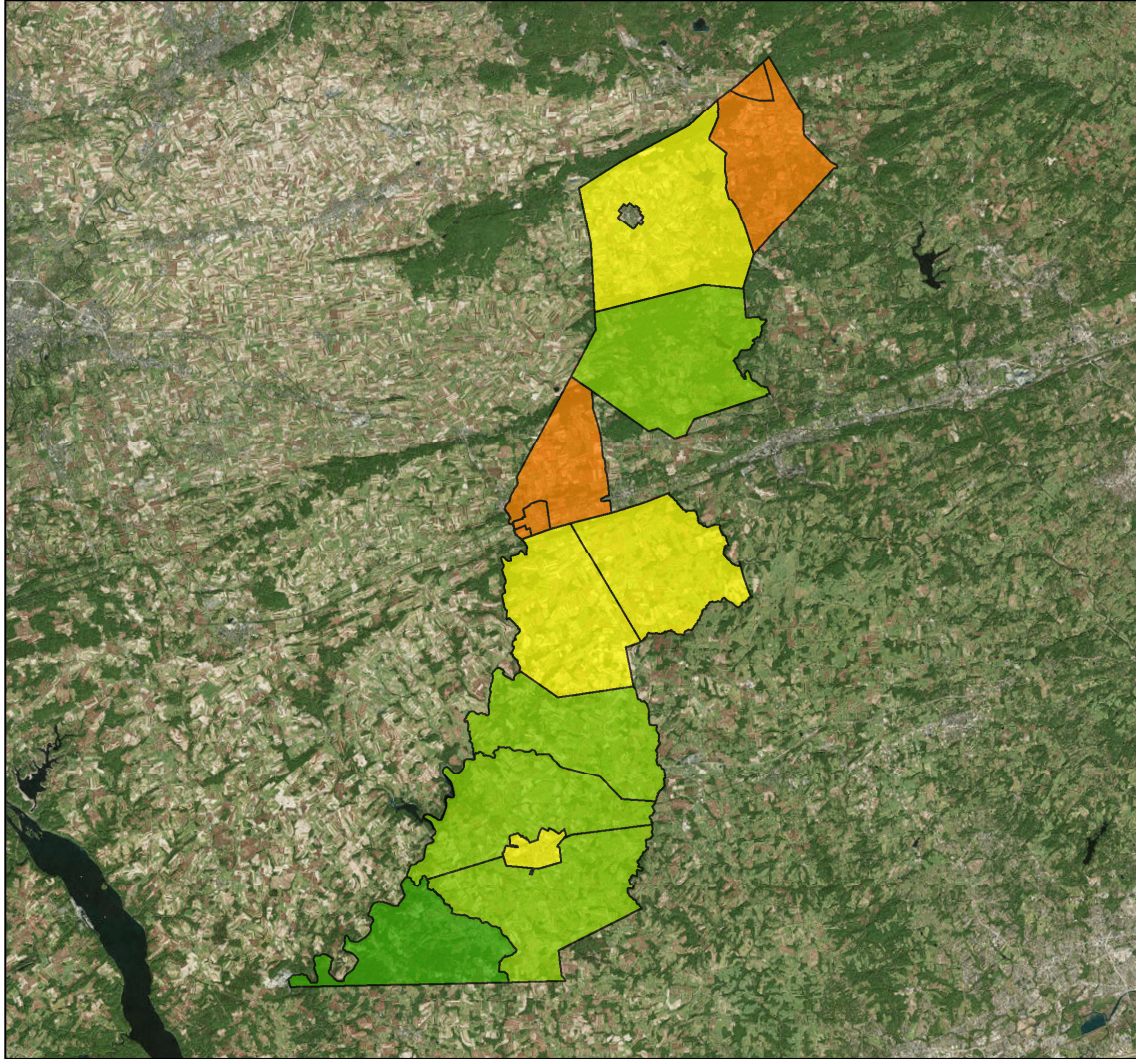
Municipal Separate Storm Sewer System (MS4) Regulated Municipality Summary

Totals by Municipalities



Averages for MS4 and Non-MS4 Municipalities

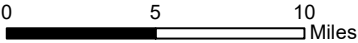
	Non-MS4	MS4
Conservation Opportunity Areas (Acres)	81	77
Restoration Opportunity Areas (Acres)	37	48
Developed Areas (Acres)	4	4
Total Buffer Acres	123	129
Percent Forest Buffer Coverage (%)	57.45	60.15



Chester County Municipalities

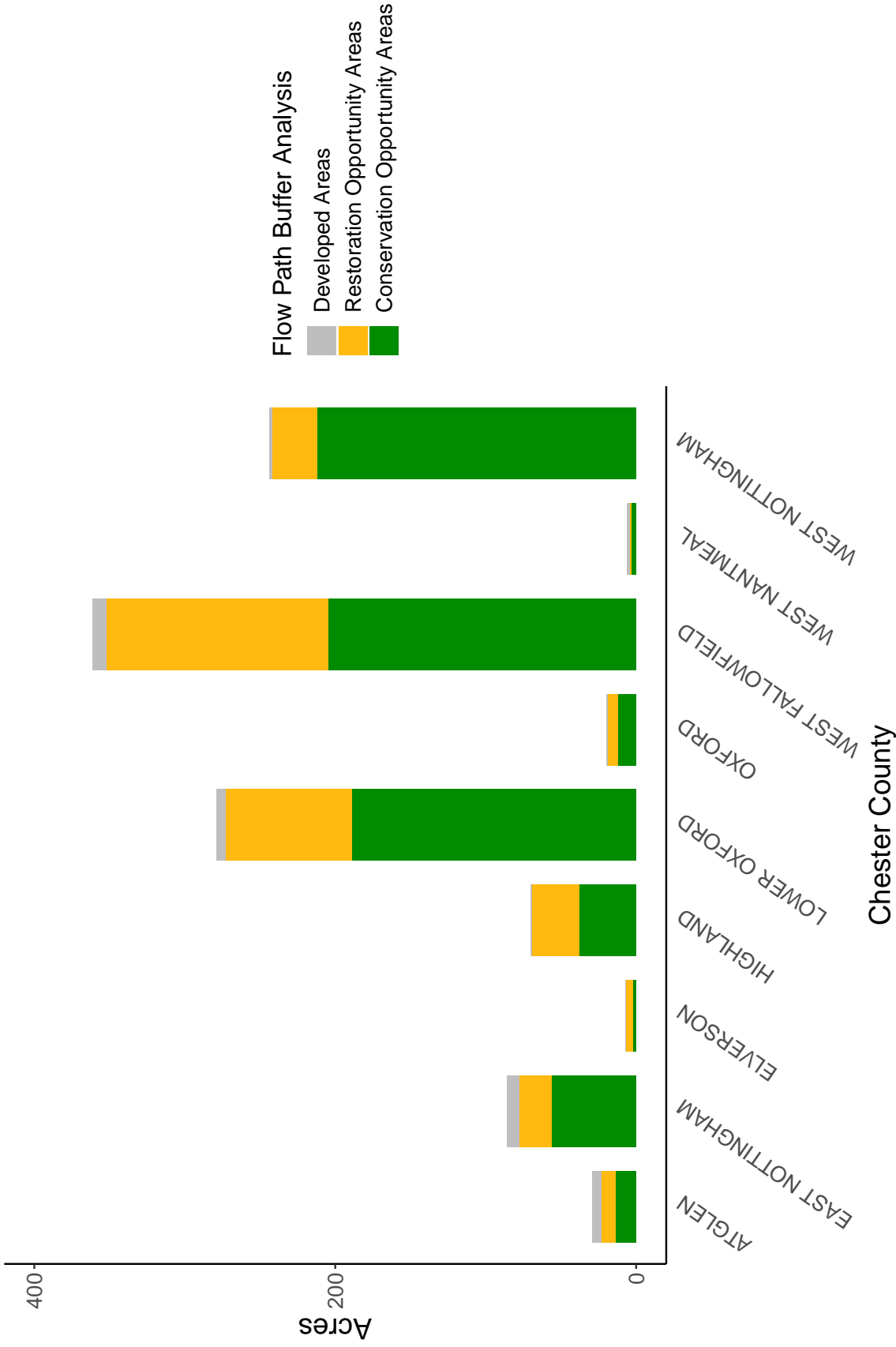
35' Buffer Coverage (%)

- 0 - 20%
- 20 - 50%
- 50 - 60%
- 60 - 70%
- 70 - 100%



Municipality	MS4	Total 35 ft buffer acres	Conservation opportunity areas (acres)	Restoration opportunity areas (acres)	Developed areas (acres)	Percent forest buffer coverage (%)
ATGLEN	0	30	14	9	6	48.39
EAST NOTTINGHAM	0	87	56	22	8	65.11
ELVERSON	0	8	2	5	0	31.91
HIGHLAND	0	70	38	31	1	54.22
LOWER OXFORD	0	279	189	84	6	67.94
OXFORD	0	20	12	7	1	57.02
WEST FALLOWFIELD	0	361	205	147	9	56.74
WEST NANTMEAL	0	5	3	1	2	49.00
WEST NOTTINGHAM	0	245	212	30	2	86.75
HONEY BROOK	1	23	14	9	1	58.54
UPPER OXFORD	1	209	141	66	1	67.59
WEST CALN	1	100	69	28	3	69.59
WEST SADSURY	1	186	83	90	12	44.85

Non-MS4 Regulated Municipalities



MS4 Regulated Municipalities

