

Clearfield County Forest Buffer Summary

35 ft. Width

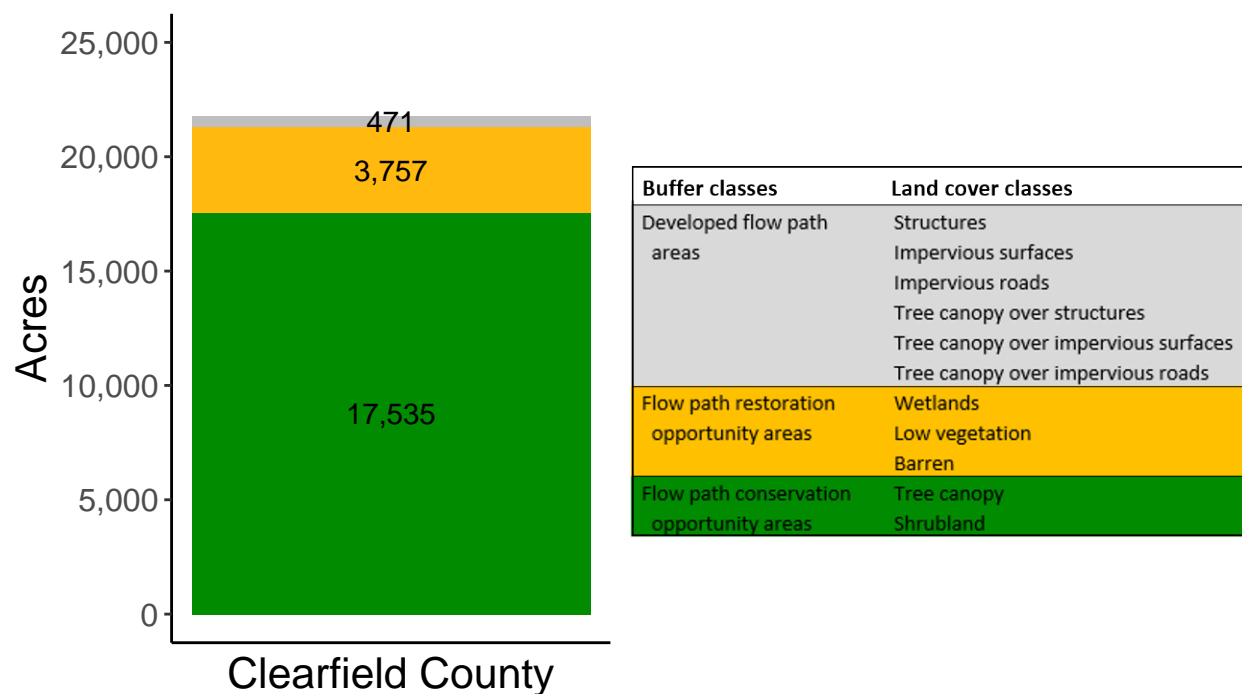
Created by: Chesapeake Conservancy, February 2019

Data Description

The buffer analysis is based on two Geospatial Information Systems (GIS) datasets created by Chesapeake Conservancy and partners. The enhanced flow path water network dataset was derived from 2006 & 2008 PAMAP Statewide digital elevation models (DEMs), developed from Lidar data. Channel heads were assigned where upslope drainage accumulation reached 60 acres. Flow paths were widened based on US Geological Survey regional curves and enhanced with high-resolution land cover. The high-resolution land cover dataset was derived from 2013 National Agriculture Inventory Program imagery. Both datasets have a spatial resolution of 1 meter. Pixels from the high-resolution land cover dataset within 35 ft. and 100 ft. distances of the enhanced flow path water network were considered in the buffer analysis. For more information and to download datasets, go to www.ChesapeakeConservancy.org and search for “data downloader.”

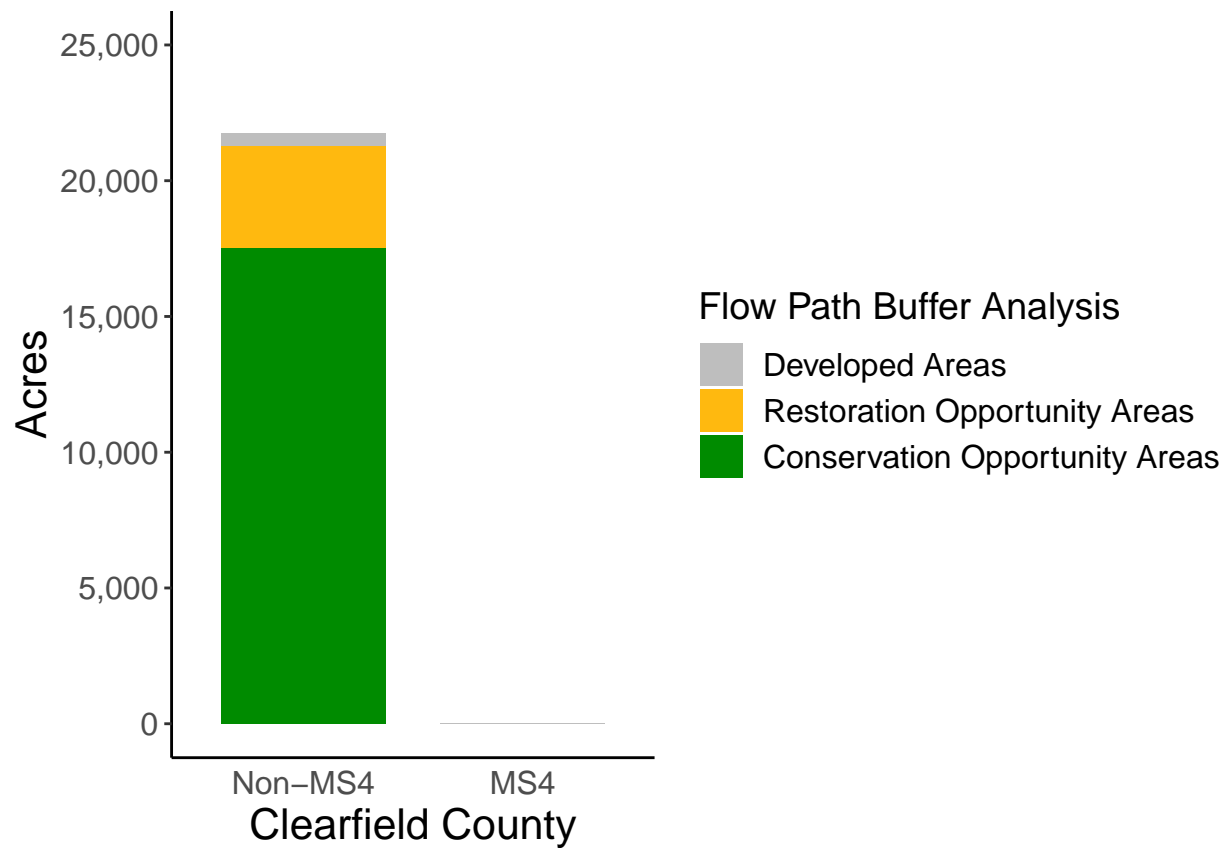
County Summary

Clearfield County contains a total of 3,757 acres of flow path restoration opportunity area, and has 80.57% forest buffer coverage. Clearfield County has incomplete buffer data coverage.



Municipal Separate Storm Sewer System (MS4) Regulated Municipality Summary

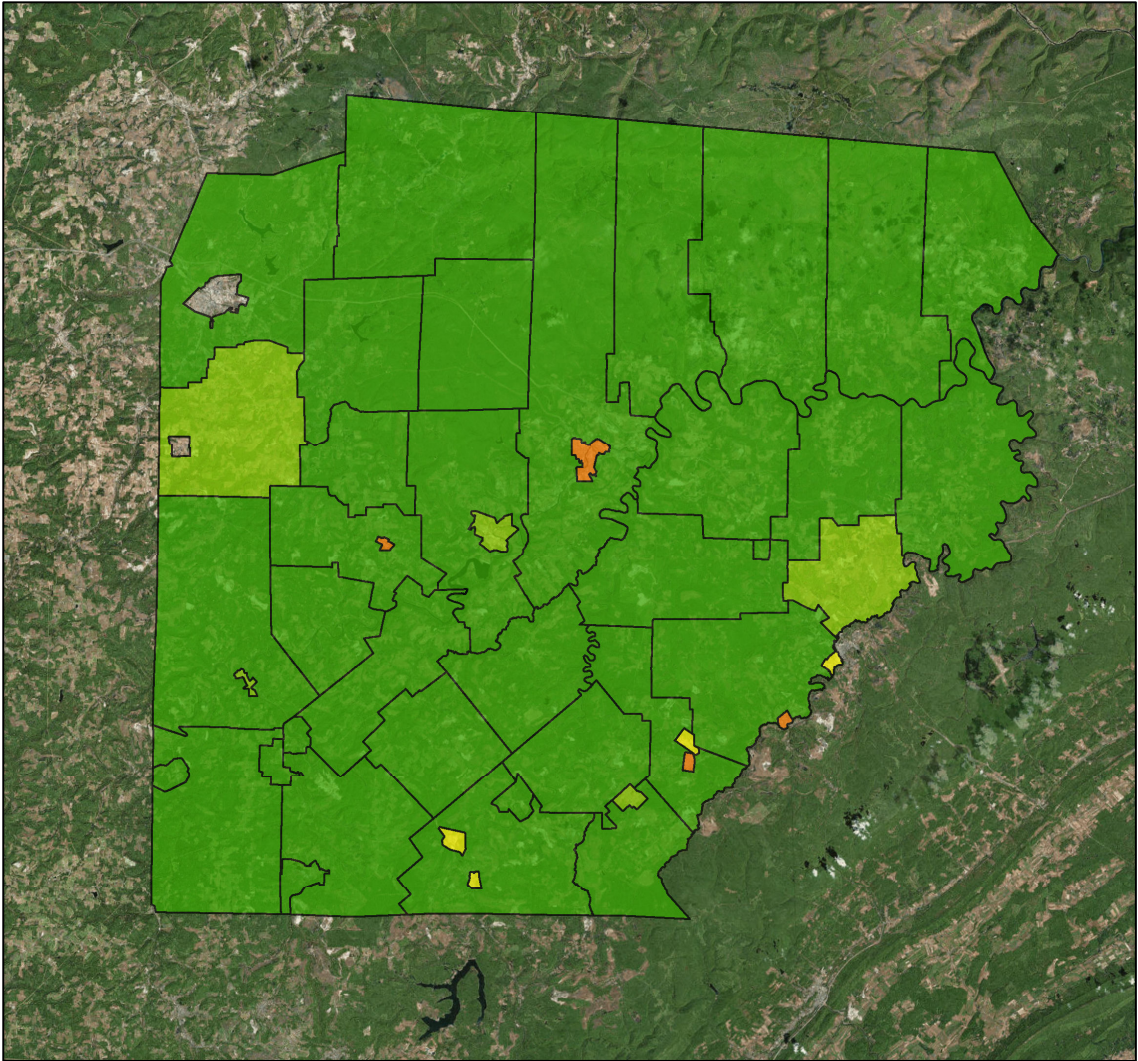
Totals by Municipalities



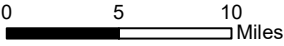
Clearfield County does not contain any MS4 Municipalities.

Averages for MS4 and Non-MS4 Municipalities

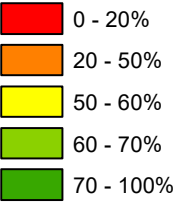
| | Non-MS4 | MS4 |
|--|---------|------|
| Conservation Opportunity Areas (Acres) | 373 | 0 |
| Restoration Opportunity Areas (Acres) | 80 | 0 |
| Developed Areas (Acres) | 10 | 0 |
| Total Buffer Acres | 463 | 0 |
| Percent Forest Buffer Coverage (%) | 74.05 | 0.00 |



Clearfield County Municipalities



35' Buffer Coverage (%)



| Municipality | MS4 | Total 35 ft buffer acres | Conservation opportunity areas (acres) | Restoration opportunity areas (acres) | Developed areas (acres) | Percent forest buffer coverage (%) |
|--------------|-----|-----------------------------|---|--|----------------------------|---------------------------------------|
| BECCARIA | 0 | 760 | 591 | 162 | 7 | 77.74 |
| BELL | 0 | 961 | 839 | 109 | 12 | 87.35 |
| BIGLER | 0 | 595 | 425 | 161 | 8 | 71.49 |
| BLOOM | 0 | 373 | 313 | 57 | 3 | 83.73 |
| BOGGS | 0 | 741 | 627 | 104 | 11 | 84.55 |
| BRADFORD | 0 | 782 | 613 | 144 | 26 | 78.31 |
| BRADY | 0 | 70 | 47 | 23 | 1 | 66.53 |
| BRISBIN | 0 | 17 | 10 | 7 | 1 | 55.69 |
| BURNSIDE | 0 | 881 | 738 | 132 | 11 | 83.76 |
| BURNSIDE | 0 | 69 | 52 | 16 | 1 | 74.77 |
| CHEST | 0 | 759 | 613 | 135 | 11 | 80.72 |
| CHESTER HILL | 0 | 16 | 8 | 7 | 1 | 50.26 |
| CLEARFIELD | 0 | 59 | 17 | 14 | 28 | 28.45 |
| COALPORT | 0 | 10 | 6 | 3 | 2 | 56.26 |
| COOPER | 0 | 834 | 681 | 137 | 16 | 81.68 |
| COVINGTON | 0 | 975 | 867 | 99 | 9 | 88.90 |
| CURWENSVILLE | 0 | 60 | 39 | 11 | 10 | 64.93 |
| DECATUR | 0 | 957 | 681 | 256 | 19 | 71.19 |
| FERGUSON | 0 | 536 | 439 | 91 | 6 | 81.91 |
| GIRARD | 0 | 1,176 | 997 | 171 | 9 | 84.71 |
| GLEN HOPE | 0 | 59 | 49 | 8 | 2 | 83.10 |
| GOSHEN | 0 | 965 | 802 | 153 | 10 | 83.13 |
| GRAHAM | 0 | 574 | 492 | 73 | 10 | 85.62 |
| GRAMPIAN | 0 | 10 | 5 | 4 | 2 | 49.16 |
| GREENWOOD | 0 | 472 | 398 | 64 | 11 | 84.26 |
| GULICH | 0 | 437 | 323 | 110 | 5 | 73.91 |
| HOUTZDALE | 0 | 14 | 4 | 6 | 4 | 25.75 |
| HUSTON | 0 | 1,352 | 1,076 | 244 | 31 | 79.62 |
| IRVONA | 0 | 28 | 15 | 11 | 1 | 54.97 |
| JORDAN | 0 | 478 | 397 | 77 | 3 | 83.07 |
| KARTHAUS | 0 | 739 | 644 | 82 | 13 | 87.15 |
| KNOX | 0 | 515 | 437 | 72 | 6 | 84.83 |
| LAWRENCE | 0 | 1,684 | 1,311 | 289 | 84 | 77.86 |
| MAHAFFEY | 0 | 15 | 10 | 4 | 1 | 66.34 |
| MORRIS | 0 | 449 | 306 | 134 | 9 | 68.08 |

(continued)

| Municipality | MS4 | Total 35 ft buffer acres | Conservation opportunity areas (acres) | Restoration opportunity areas (acres) | Developed areas (acres) | Percent forest buffer coverage (%) |
|----------------|-----|-----------------------------|---|--|----------------------------|---------------------------------------|
| NEW WASHINGTON | 0 | 42 | 39 | 2 | 1 | 94.17 |
| NEWBURG | 0 | 55 | 44 | 9 | 2 | 79.80 |
| OSCEOLA MILLS | 0 | 12 | 6 | 4 | 2 | 48.75 |
| PENN | 0 | 510 | 411 | 91 | 7 | 80.70 |
| PIKE | 0 | 917 | 750 | 147 | 20 | 81.81 |
| PINE | 0 | 587 | 481 | 80 | 27 | 81.88 |
| RAMEY | 0 | 19 | 13 | 5 | 0 | 68.69 |
| SANDY | 0 | 50 | 47 | 3 | 1 | 92.77 |
| UNION | 0 | 518 | 418 | 84 | 16 | 80.72 |
| WALLACETON | 0 | 13 | 11 | 2 | 0 | 81.18 |
| WESTOVER | 0 | 118 | 94 | 21 | 4 | 79.25 |
| WOODWARD | 0 | 498 | 352 | 138 | 8 | 70.63 |

Non-MS4 Regulated Municipalities

