

Clinton County Forest Buffer Summary

35 ft. Width

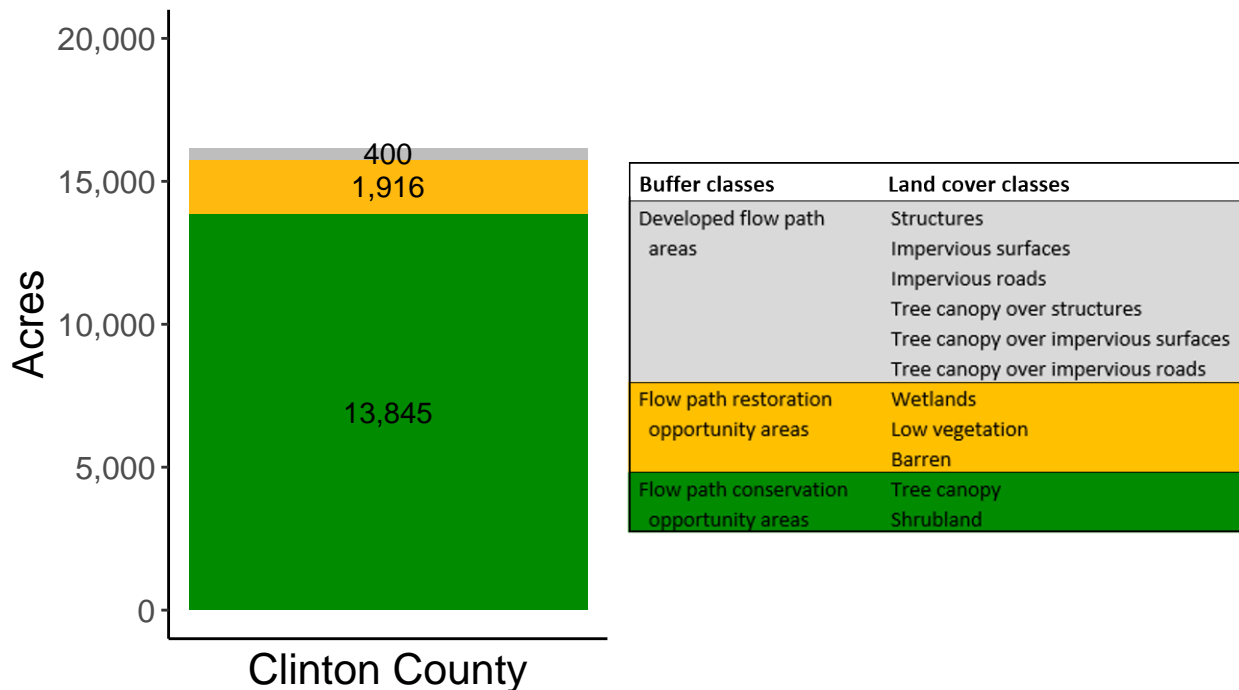
Created by: Chesapeake Conservancy, February 2019

Data Description

The buffer analysis is based on two Geospatial Information Systems (GIS) datasets created by Chesapeake Conservancy and partners. The enhanced flow path water network dataset was derived from 2006 & 2008 PAMAP Statewide digital elevation models (DEMs), developed from Lidar data. Channel heads were assigned where upslope drainage accumulation reached 60 acres. Flow paths were widened based on US Geological Survey regional curves and enhanced with high-resolution land cover. The high-resolution land cover dataset was derived from 2013 National Agriculture Inventory Program imagery. Both datasets have a spatial resolution of 1 meter. Pixels from the high-resolution land cover dataset within 35 ft. and 100 ft. distances of the enhanced flow path water network were considered in the buffer analysis. For more information and to download datasets, go to www.ChesapeakeConservancy.org and search for “data downloader.”

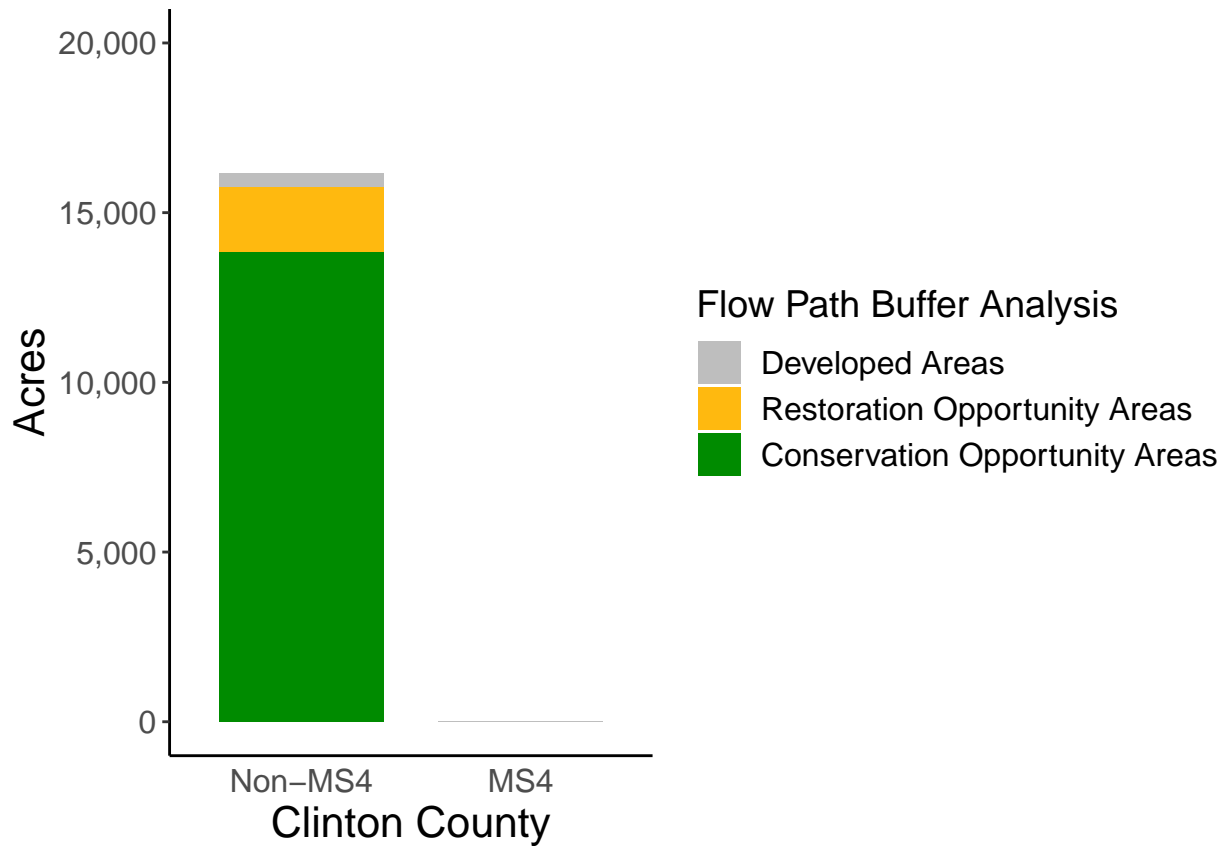
County Summary

Clinton County contains a total of 1,916 acres of flow path restoration opportunity area, and has 85.67% forest buffer coverage. Clinton County has complete buffer data coverage.



Municipal Separate Storm Sewer System (MS4) Regulated Municipality Summary

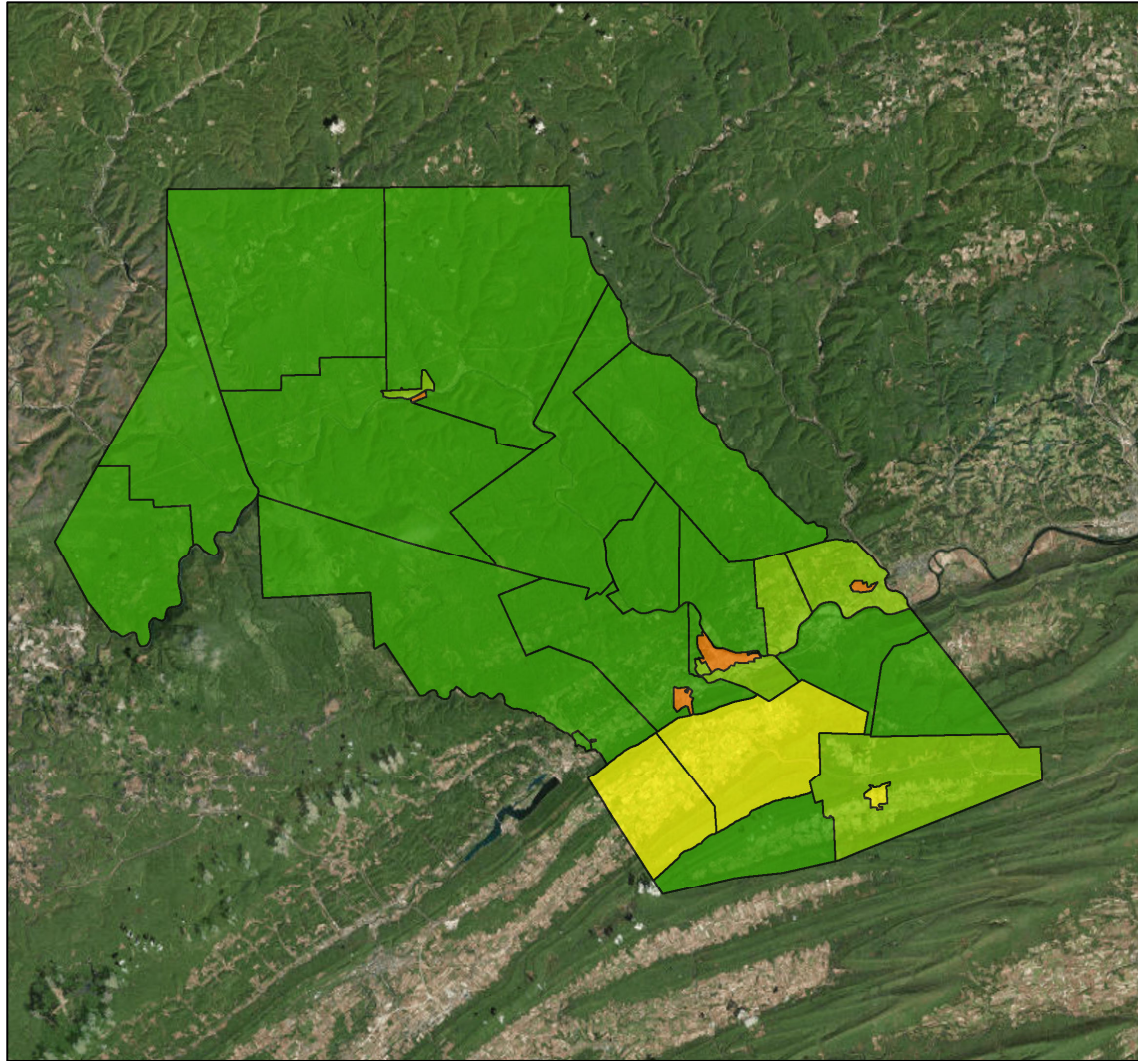
Totals by Municipalities



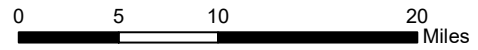
Clinton County does not contain any MS4 Municipalities.

Averages for MS4 and Non-MS4 Municipalities

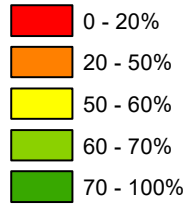
	Non-MS4	MS4
Conservation Opportunity Areas (Acres)	477	0
Restoration Opportunity Areas (Acres)	66	0
Developed Areas (Acres)	14	0
Total Buffer Acres	557	0
Percent Forest Buffer Coverage (%)	72.35	0.00



Clinton County Municipalities



35' Buffer Coverage (%)



Municipality	MS4	Total 35 ft buffer acres	Conservation opportunity areas (acres)	Restoration opportunity areas (acres)	Developed areas (acres)	Percent forest buffer coverage (%)
ALLISON	0	48	38	9	2	77.97
AVIS	0	13	4	5	4	31.98
BALD EAGLE	0	817	690	102	25	84.43
BEECH CREEK	0	1,668	1,527	122	19	91.55
BEECH CREEK	0	14	10	3	1	73.49
CASTANEA	0	117	76	29	12	64.96
CHAPMAN	0	1,965	1,861	74	31	94.67
COLEBROOK	0	361	341	15	5	94.51
CRAWFORD	0	344	281	53	11	81.59
DUNNSTABLE	0	239	161	66	12	67.57
EAST KEATING	0	891	802	76	13	89.99
FLEMINGTON	0	15	10	3	1	69.37
GALLAGHER	0	916	876	36	5	95.58
GREENE	0	869	587	241	41	67.58
GRUGAN	0	1,135	1,088	31	16	95.84
LAMAR	0	756	447	271	38	59.08
LEIDY	0	1,727	1,552	147	28	89.85
LOCK HAVEN	0	64	19	24	22	29.25
LOGAN	0	434	357	70	7	82.13
LOGANTON	0	26	14	12	0	53.08
MILL HALL	0	22	9	7	5	42.23
NOYES	0	1,379	1,291	72	16	93.62
PINE CREEK	0	361	230	111	20	63.73
PORTER	0	469	245	201	23	52.15
RENOVO	0	47	30	11	7	62.48
SOUTH RENOVO	0	8	2	5	1	26.20
WAYNE	0	428	344	66	19	80.23
WEST KEATING	0	670	647	19	4	96.52
WOODWARD	0	356	308	36	11	86.61

*

Non-MS4 Regulated Municipalities

