

# Columbia County Forest Buffer Summary

## 35 ft. Width

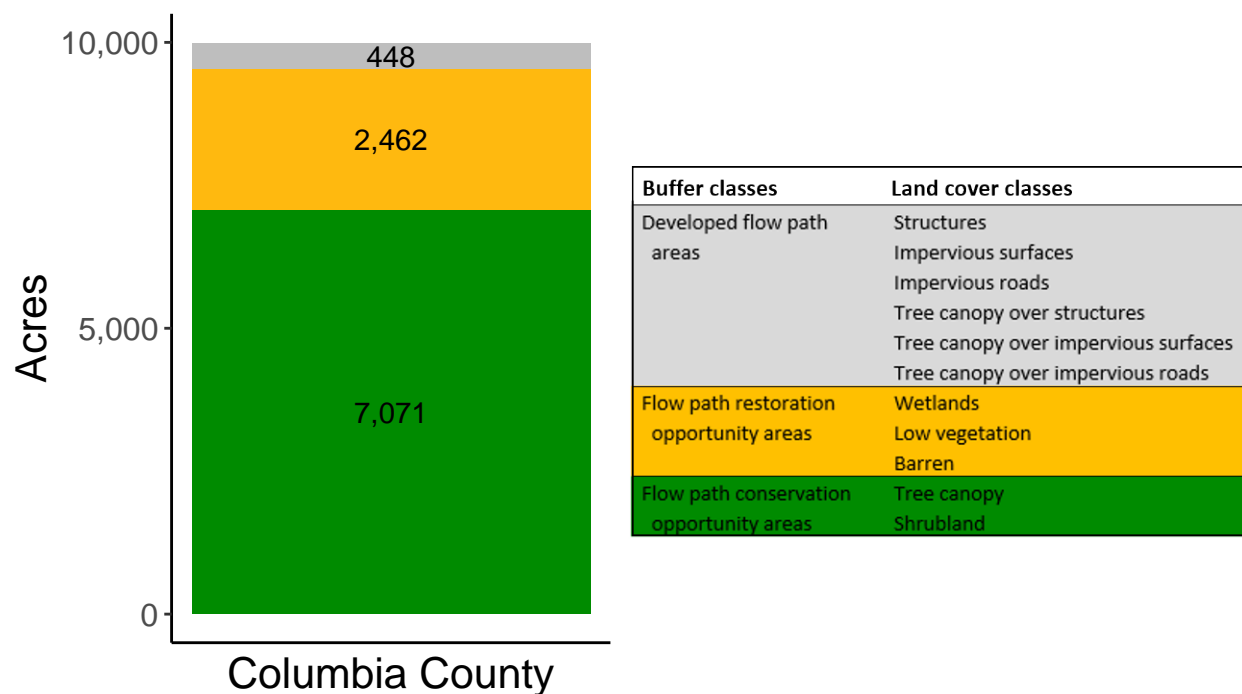
*Created by: Chesapeake Conservancy, February 2019*

### Data Description

The buffer analysis is based on two Geospatial Information Systems (GIS) datasets created by Chesapeake Conservancy and partners. The enhanced flow path water network dataset was derived from 2006 & 2008 PAMAP Statewide digital elevation models (DEMs), developed from Lidar data. Channel heads were assigned where upslope drainage accumulation reached 60 acres. Flow paths were widened based on US Geological Survey regional curves and enhanced with high-resolution land cover. The high-resolution land cover dataset was derived from 2013 National Agriculture Inventory Program imagery. Both datasets have a spatial resolution of 1 meter. Pixels from the high-resolution land cover dataset within 35 ft. and 100 ft. distances of the enhanced flow path water network were considered in the buffer analysis. For more information and to download datasets, go to [www.ChesapeakeConservancy.org](http://www.ChesapeakeConservancy.org) and search for “data downloader.”

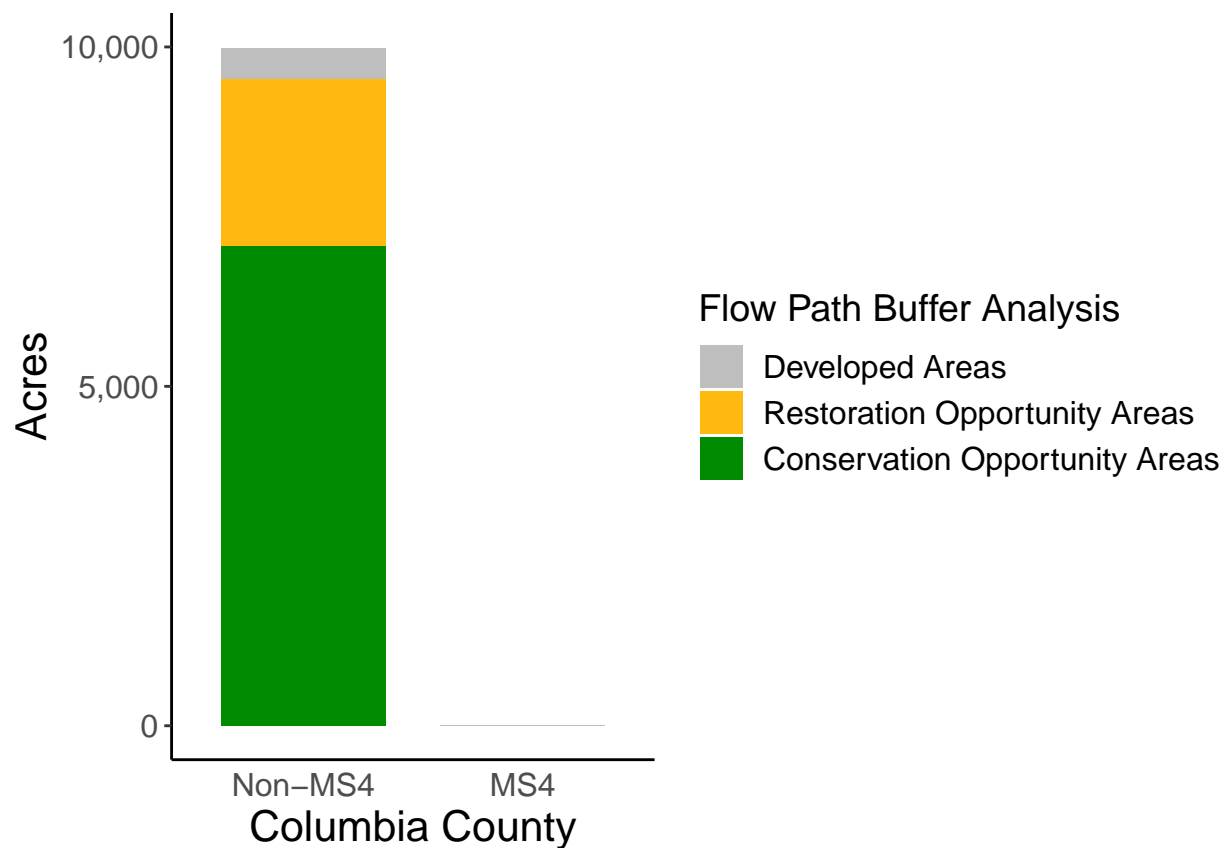
### County Summary

Columbia County contains a total of 2,462 acres of flow path restoration opportunity area, and has 70.85% forest buffer coverage. Columbia County has complete buffer data coverage.



## Municipal Separate Storm Sewer System (MS4) Regulated Municipality Summary

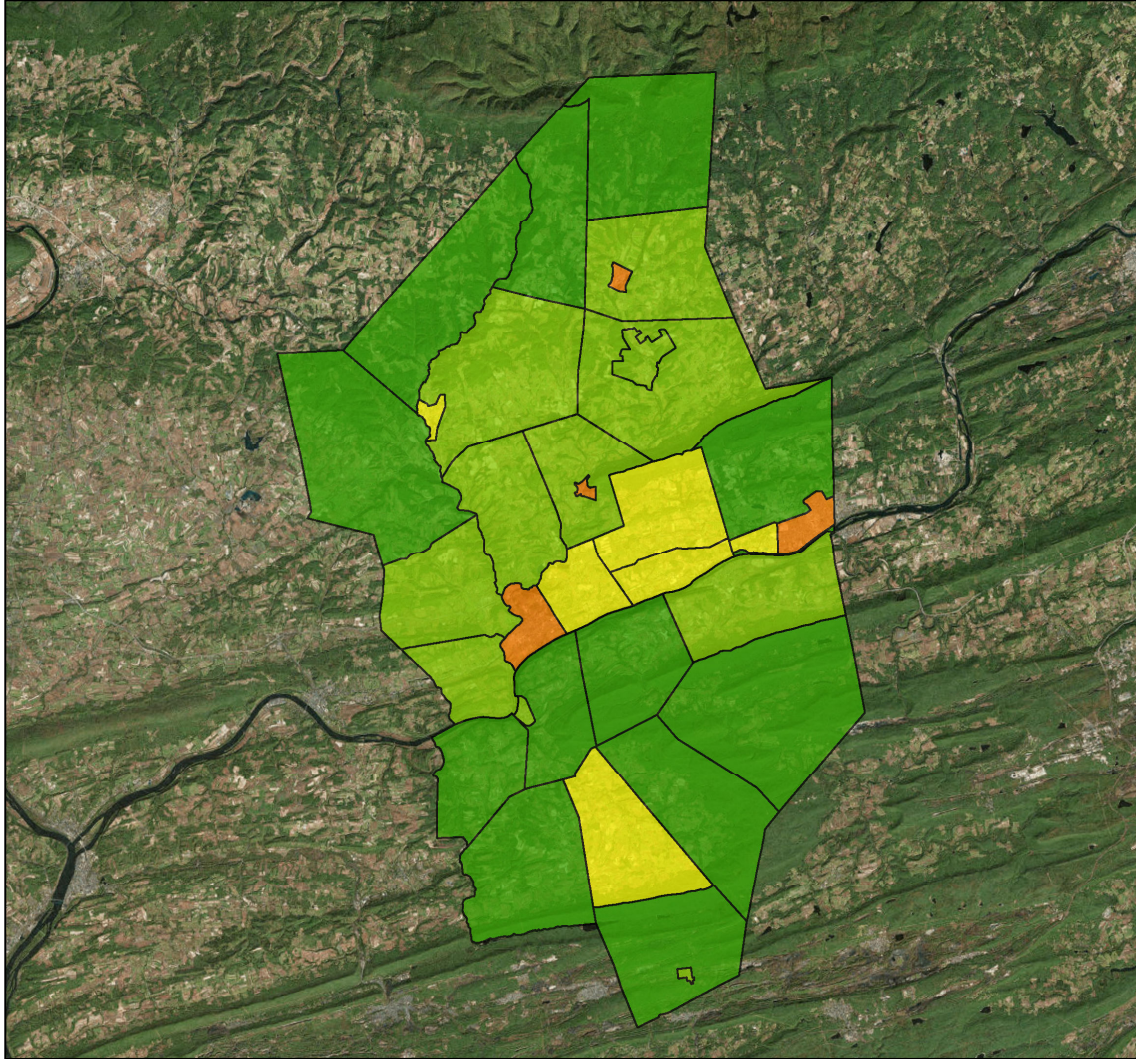
### Totals by Municipalities



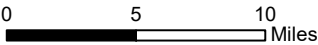
Columbia County does not contain any MS4 Municipalities.

### Averages for MS4 and Non-MS4 Municipalities

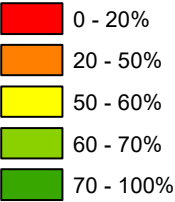
	Non-MS4	MS4
Conservation Opportunity Areas (Acres)	214	0
Restoration Opportunity Areas (Acres)	75	0
Developed Areas (Acres)	14	0
Total Buffer Acres	302	0
Percent Forest Buffer Coverage (%)	65.09	0.00



**Columbia County Municipalities**



**35' Buffer Coverage (%)**



Municipality	MS4	Total 35 ft buffer acres	Conservation opportunity areas (acres)	Restoration opportunity areas (acres)	Developed areas (acres)	Percent forest buffer coverage (%)
BEAVER	0	559	487	67	5	87.02
BENTON	0	470	300	153	16	63.87
BENTON	0	33	16	11	6	47.66
BERWICK	0	78	22	24	33	28.05
BLOOMSBURG	0	131	62	38	30	47.52
BRIAR CREEK	0	421	295	114	12	70.05
BRIAR CREEK	0	45	23	18	4	51.96
CATAWISSA	0	225	164	49	12	72.75
CATAWISSA	0	27	16	6	4	60.56
CENTRALIA	0	1	1	0	0	61.17
CLEVELAND	0	418	314	88	16	74.99
CONYNGHAM	0	344	249	79	15	72.45
FISHING CREEK	0	576	401	158	17	69.63
FRANKLIN	0	304	222	68	14	73.13
GREENWOOD	0	632	422	189	21	66.75
HEMLOCK	0	378	238	115	26	62.83
JACKSON	0	335	264	63	8	78.80
LOCUST	0	377	214	152	12	56.74
MADISON	0	681	520	147	14	76.42
MAIN	0	344	269	66	9	78.24
MIFFLIN	0	406	257	125	24	63.27
MILLVILLE	0	25	14	10	1	53.39
MONTOUR	0	259	173	66	20	66.89
MT PLEASANT	0	357	246	97	14	68.98
NORTH CENTRE	0	261	156	94	11	59.60
ORANGE	0	305	212	79	13	69.60
ORANGEVILLE	0	14	7	6	2	47.96
PINE	0	523	454	59	10	86.76
ROARING CREEK	0	362	300	57	4	82.96
SCOTT	0	197	112	63	23	56.70
SOUTH CENTRE	0	167	84	56	28	50.07
STILLWATER	0	107	66	36	5	61.41
SUGARLOAF	0	616	492	108	16	79.81

\*

## Non-MS4 Regulated Municipalities

