

# Cumberland County Forest Buffer Summary

## 35 ft. Width

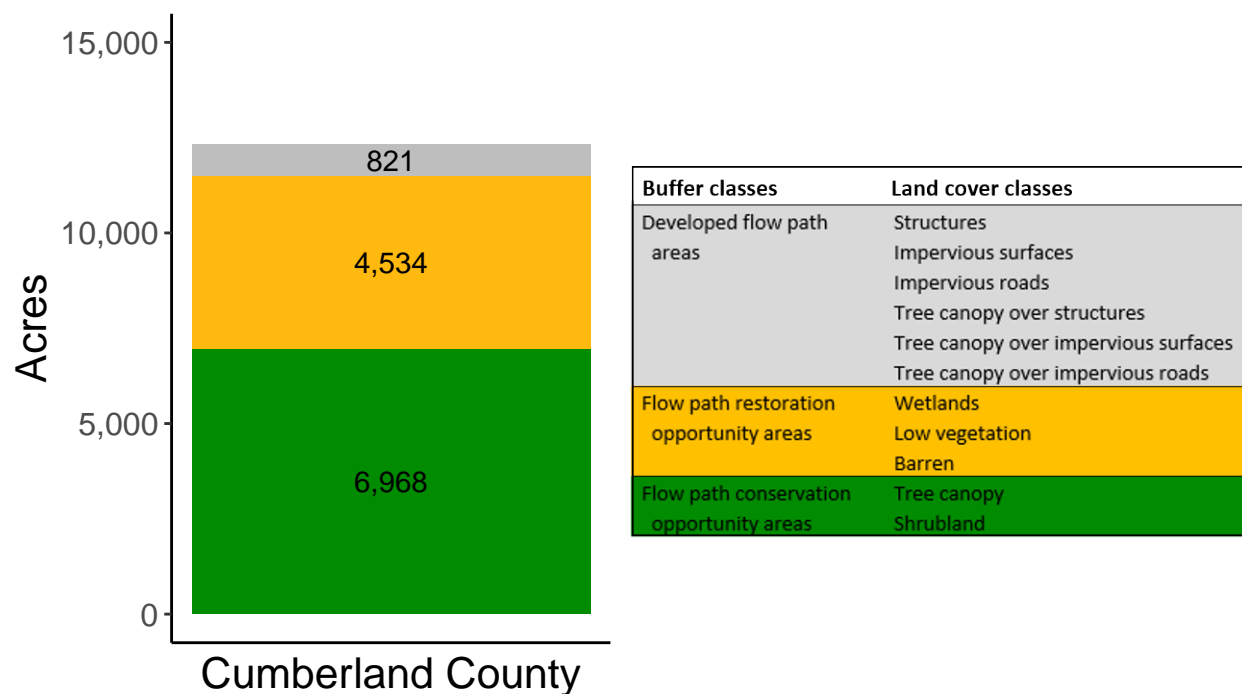
*Created by: Chesapeake Conservancy, February 2019*

### Data Description

The buffer analysis is based on two Geospatial Information Systems (GIS) datasets created by Chesapeake Conservancy and partners. The enhanced flow path water network dataset was derived from 2006 & 2008 PAMAP Statewide digital elevation models (DEMs), developed from Lidar data. Channel heads were assigned where upslope drainage accumulation reached 60 acres. Flow paths were widened based on US Geological Survey regional curves and enhanced with high-resolution land cover. The high-resolution land cover dataset was derived from 2013 National Agriculture Inventory Program imagery. Both datasets have a spatial resolution of 1 meter. Pixels from the high-resolution land cover dataset within 35 ft. and 100 ft. distances of the enhanced flow path water network were considered in the buffer analysis. For more information and to download datasets, go to [www.ChesapeakeConservancy.org](http://www.ChesapeakeConservancy.org) and search for “data downloader.”

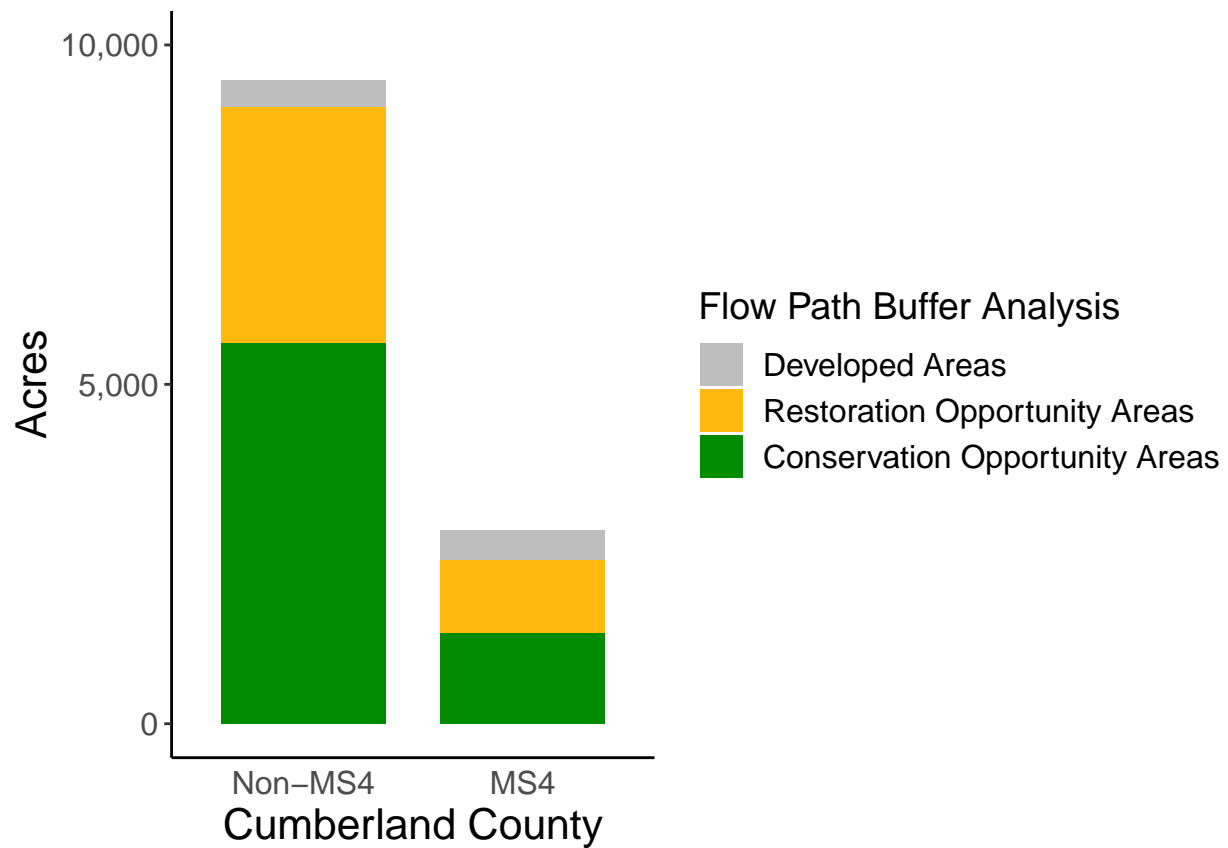
### County Summary

Cumberland County contains a total of 4,534 acres of flow path restoration opportunity area, and has 56.55% forest buffer coverage. Cumberland County has complete buffer data coverage.



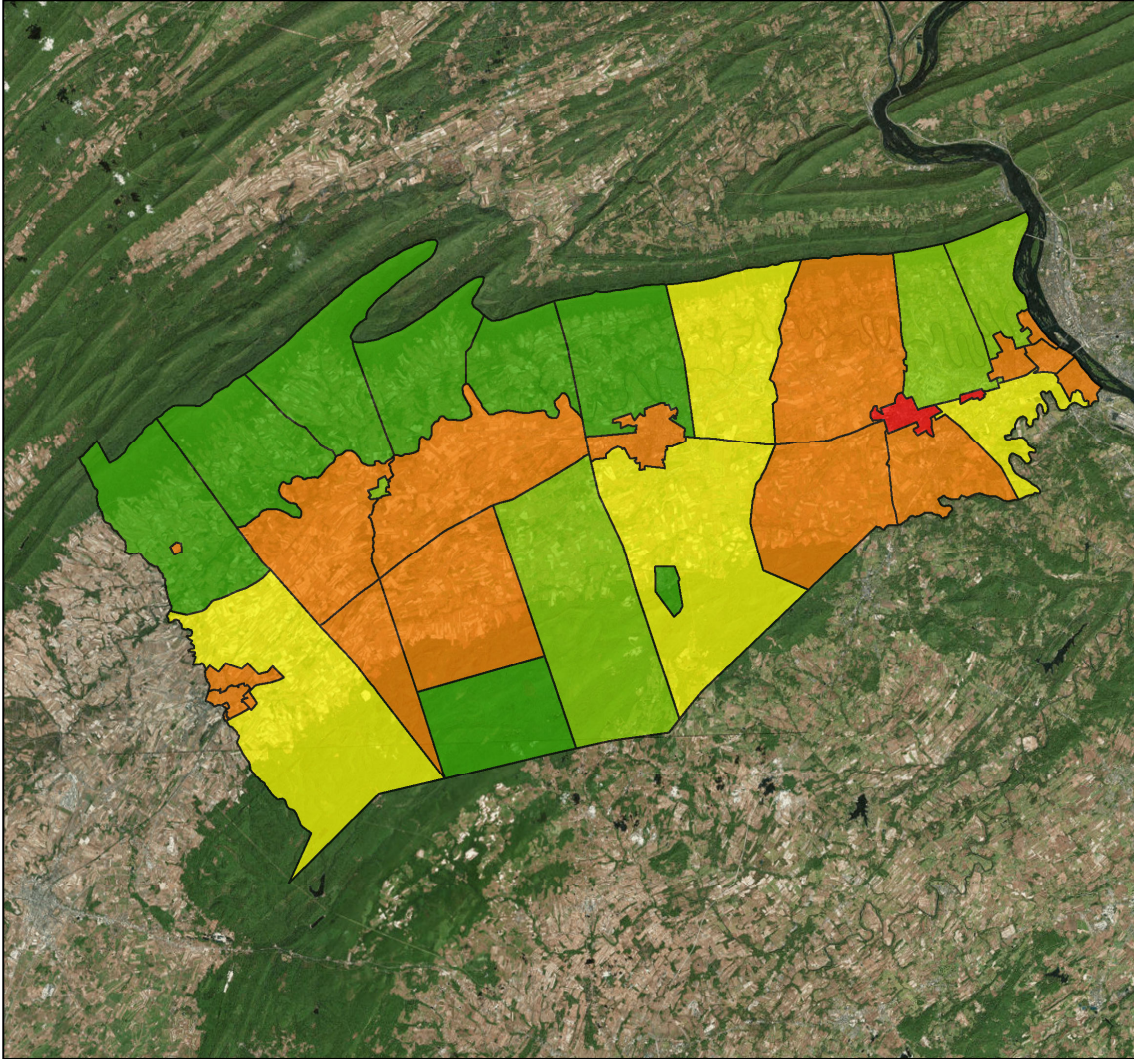
# Municipal Separate Storm Sewer System (MS4) Regulated Municipality Summary

## Totals by Municipalities

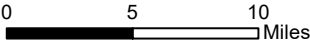


## Averages for MS4 and Non-MS4 Municipalities

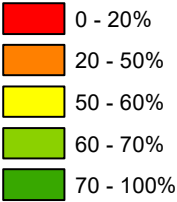
	Non-MS4	MS4
Conservation Opportunity Areas (Acres)	281	104
Restoration Opportunity Areas (Acres)	173	82
Developed Areas (Acres)	19	33
Total Buffer Acres	474	219
Percent Forest Buffer Coverage (%)	58.62	38.12



**Cumberland County Municipalities**

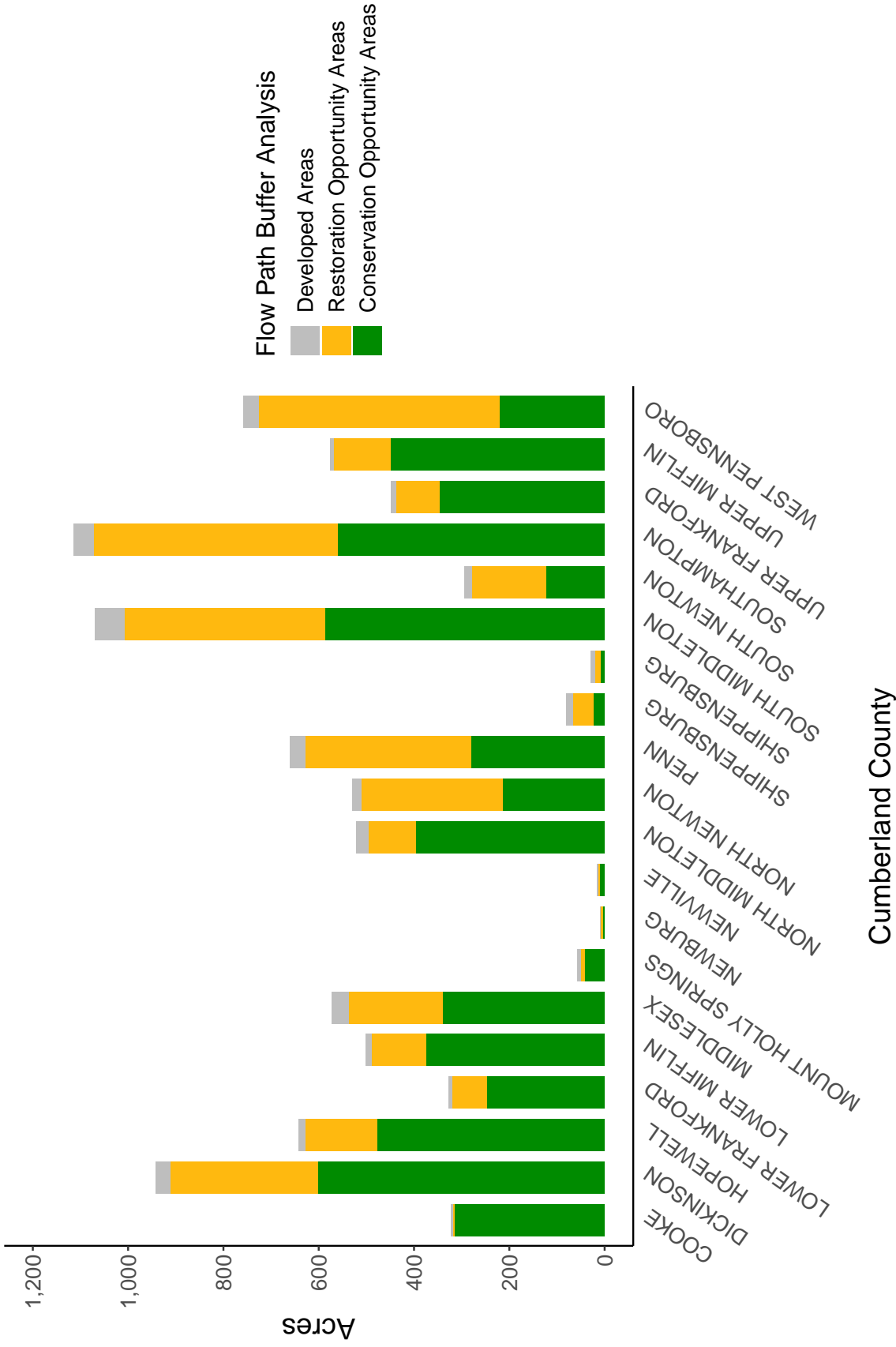


**35' Buffer Coverage (%)**



Municipality	MS4	Total 35 ft buffer acres	Conservation opportunity areas (acres)	Restoration opportunity areas (acres)	Developed areas (acres)	Percent forest buffer coverage (%)
COOKE	0	323	315	4	4	97.43
DICKINSON	0	943	601	311	31	63.74
HOPEWELL	0	642	478	150	14	74.44
LOWER FRANKFORD	0	328	248	73	7	75.54
LOWER MIFFLIN	0	502	374	115	12	74.57
MIDDLESEX	0	573	340	197	36	59.38
MOUNT HOLLY SPRINGS	0	58	41	8	8	71.19
NEWBURG	0	8	4	4	1	46.88
NEWVILLE	0	17	10	4	3	61.22
NORTH MIDDLETON	0	521	397	98	26	76.25
NORTH NEWTON	0	529	214	296	19	40.42
PENN	0	660	280	348	33	42.35
SHIPPENSBURG	0	81	23	44	14	28.24
SHIPPENSBURG	0	29	9	12	9	29.43
SOUTH MIDDLETON	0	1,070	587	421	62	54.87
SOUTH NEWTON	0	293	122	157	15	41.64
SOUTHAMPTON	0	1,114	561	511	43	50.30
UPPER FRANKFORD	0	449	346	92	11	77.10
UPPER MIFFLIN	0	576	450	118	8	78.13
WEST PENNSBORO	0	758	221	504	33	29.19
CAMP HILL	1	37	14	7	16	37.57
CARLISLE	1	134	34	47	53	25.04
EAST PENNSBORO	1	268	165	42	60	61.62
HAMPDEN	1	398	244	80	75	61.19
LEMOYNE	1	31	12	4	15	37.32
LOWER ALLEN	1	262	138	68	55	52.86
MECHANICSBURG	1	50	8	25	16	15.92
MONROE	1	573	203	338	32	35.50
NEW CUMBERLAND	1	37	12	7	18	33.41
SHIREMANSTOWN	1	0	0	0	0	0.00
SILVER SPRING	1	748	367	332	50	49.03
UPPER ALLEN	1	285	141	113	32	49.33
WORMLEYSBURG	1	23	8	6	9	36.75

Non-MS4 Regulated Municipalities



MS4 Regulated Municipalities

