

Dauphin County Forest Buffer Summary

35 ft. Width

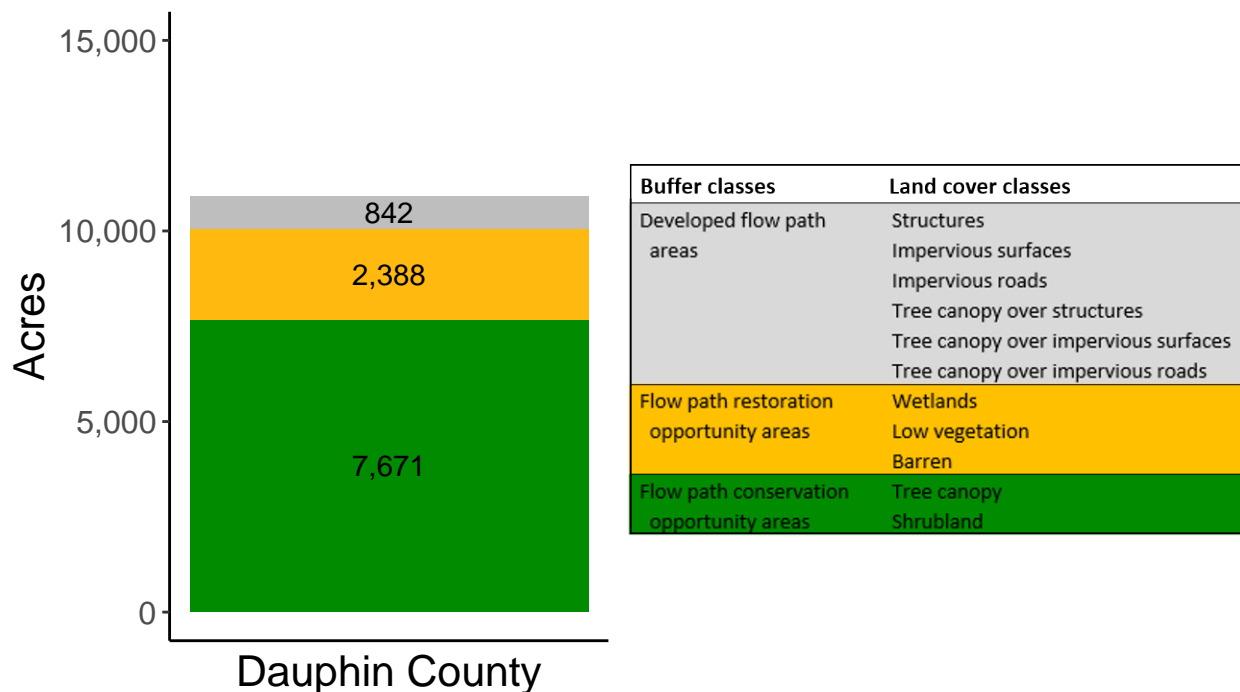
Created by: Chesapeake Conservancy, February 2019

Data Description

The buffer analysis is based on two Geospatial Information Systems (GIS) datasets created by Chesapeake Conservancy and partners. The enhanced flow path water network dataset was derived from 2006 & 2008 PAMAP Statewide digital elevation models (DEMs), developed from Lidar data. Channel heads were assigned where upslope drainage accumulation reached 60 acres. Flow paths were widened based on US Geological Survey regional curves and enhanced with high-resolution land cover. The high-resolution land cover dataset was derived from 2013 National Agriculture Inventory Program imagery. Both datasets have a spatial resolution of 1 meter. Pixels from the high-resolution land cover dataset within 35 ft. and 100 ft. distances of the enhanced flow path water network were considered in the buffer analysis. For more information and to download datasets, go to www.ChesapeakeConservancy.org and search for “data downloader.”

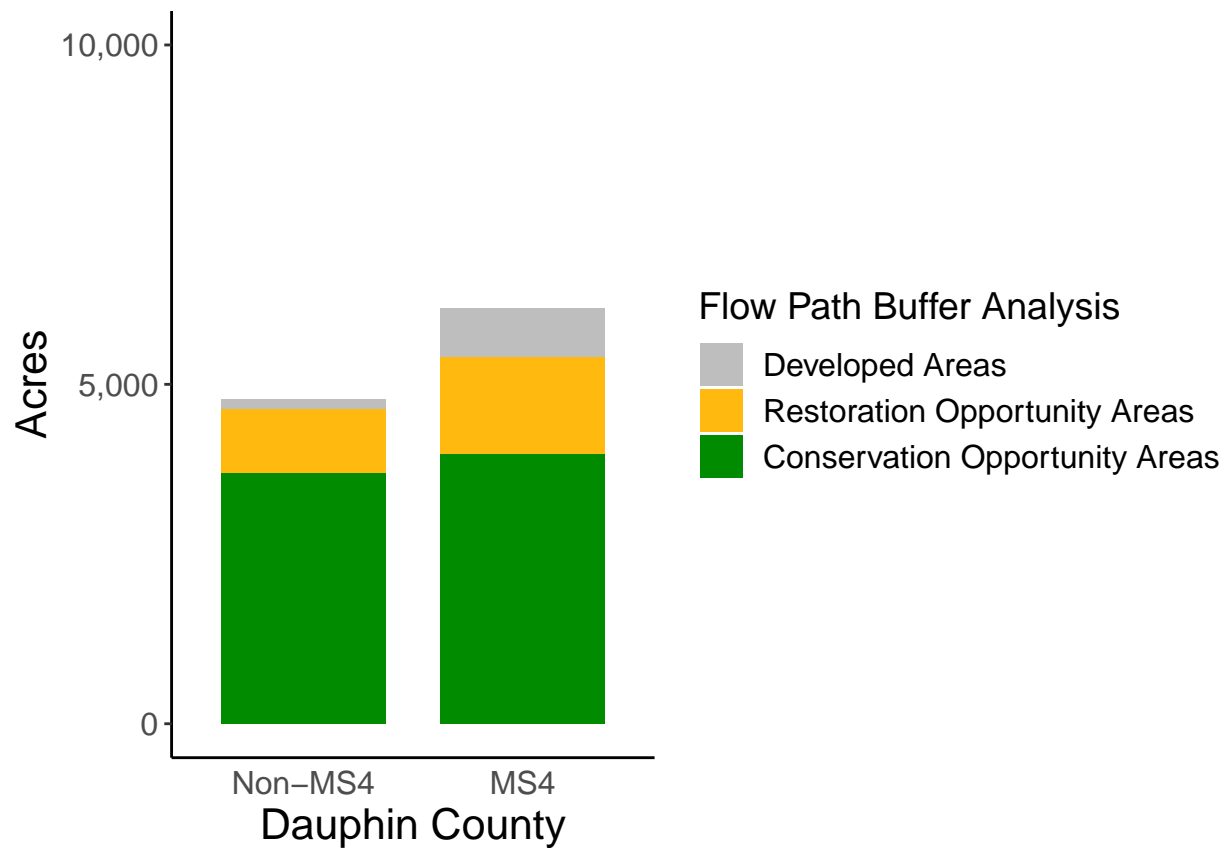
County Summary

Dauphin County contains a total of 2,388 acres of flow path restoration opportunity area, and has 70.37% forest buffer coverage. Dauphin County has complete buffer data coverage.



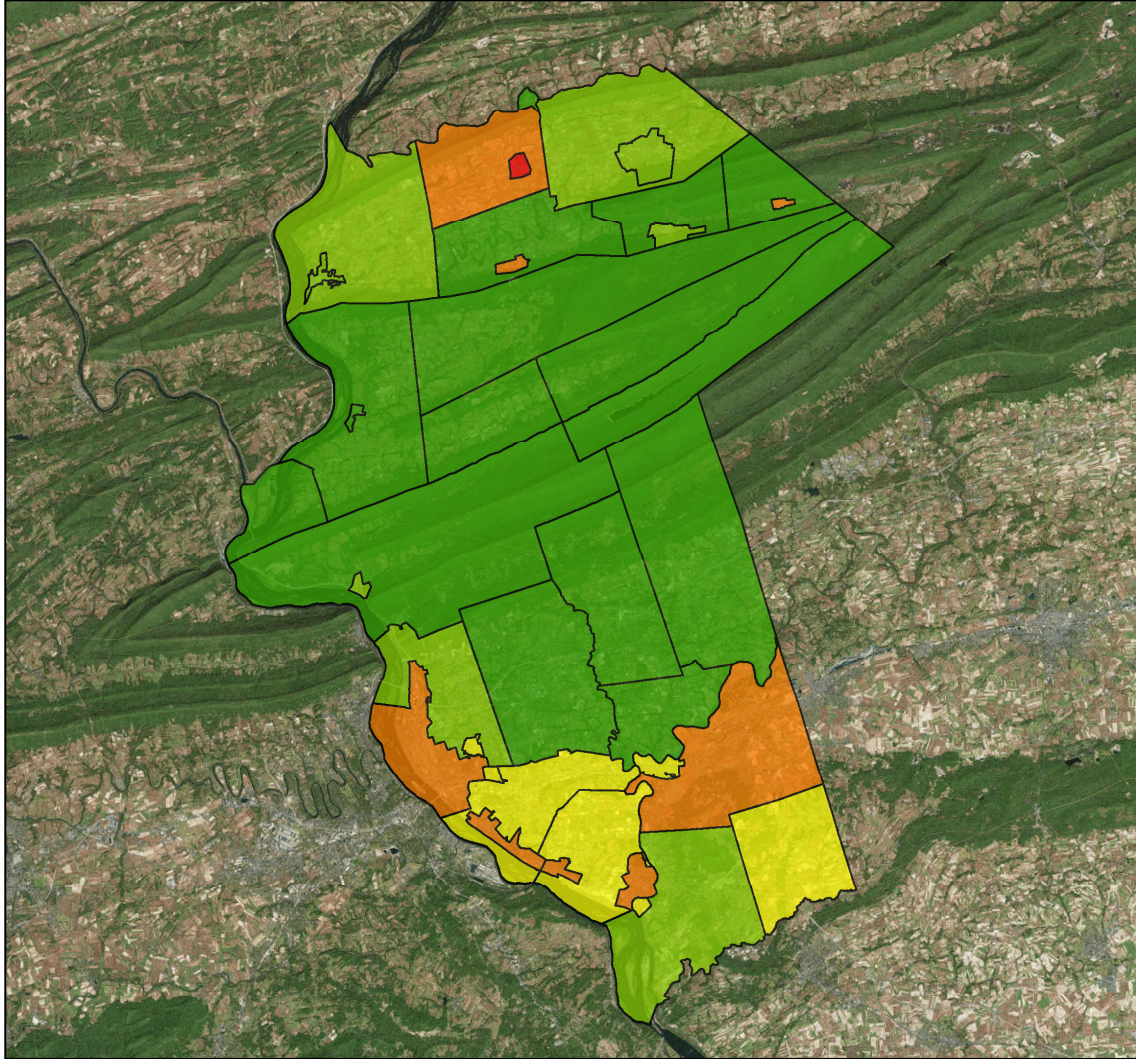
Municipal Separate Storm Sewer System (MS4) Regulated Municipality Summary

Totals by Municipalities

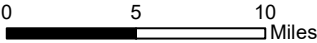


Averages for MS4 and Non-MS4 Municipalities

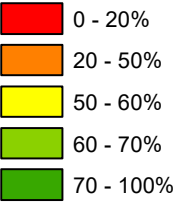
	Non-MS4	MS4
Conservation Opportunity Areas (Acres)	185	199
Restoration Opportunity Areas (Acres)	47	72
Developed Areas (Acres)	7	35
Total Buffer Acres	239	306
Percent Forest Buffer Coverage (%)	69.10	57.36



Dauphin County Municipalities



35' Buffer Coverage (%)

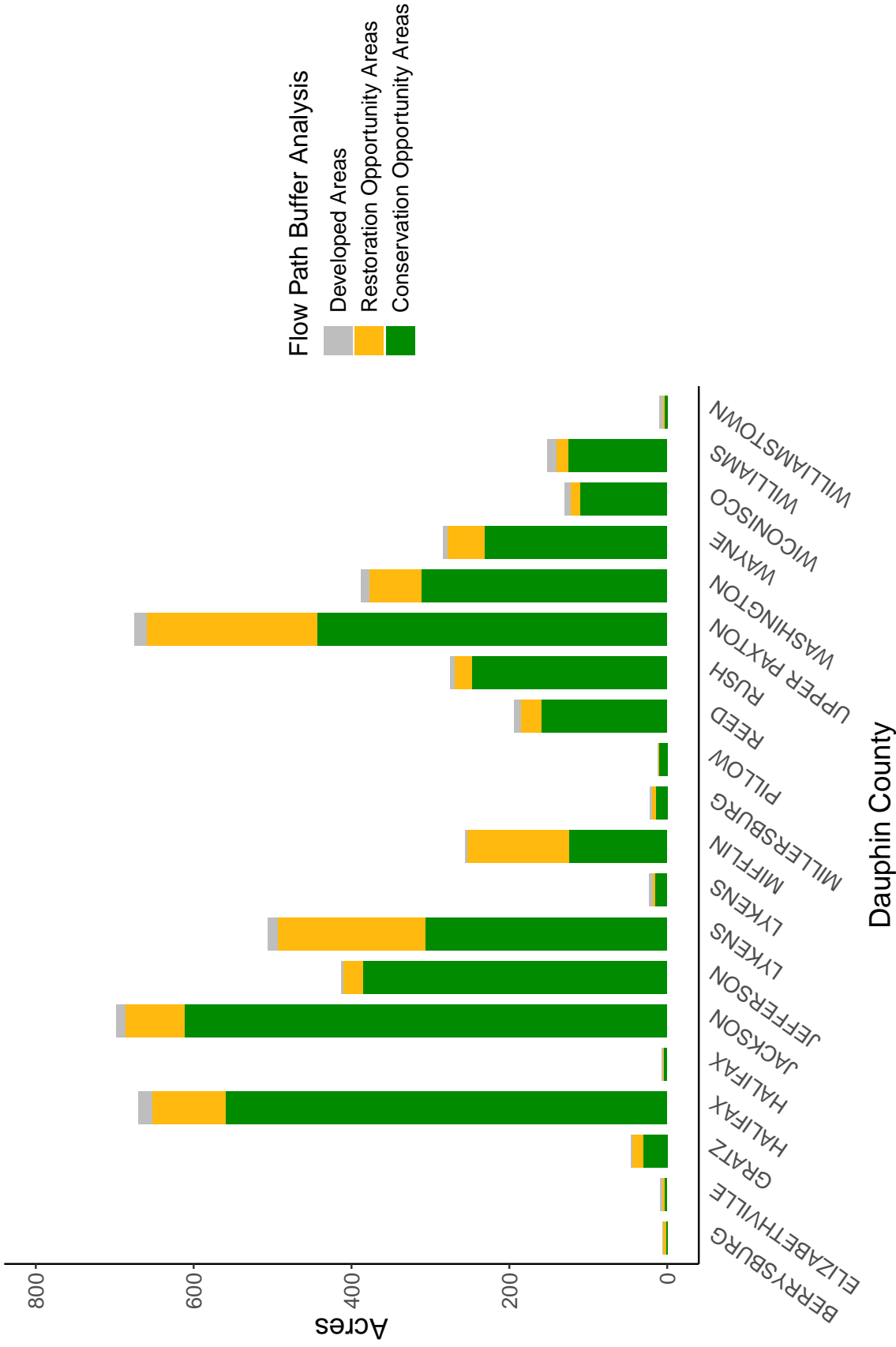


Municipality	MS4	Total 35 ft buffer acres	Conservation opportunity areas (acres)	Restoration opportunity areas (acres)	Developed areas (acres)	Percent forest buffer coverage (%)
BERRYSBURG	0	6	1	5	0	12.04
ELIZABETHVILLE	0	9	3	3	3	32.58
GRATZ	0	45	30	15	1	65.84
HALIFAX	0	670	559	93	18	83.45
HALIFAX	0	7	5	1	1	75.61
JACKSON	0	699	611	76	11	87.48
JEFFERSON	0	413	386	24	3	93.50
LYKENS	0	506	306	187	13	60.41
LYKENS	0	23	15	3	5	66.22
MIFFLIN	0	256	124	129	3	48.36
MILLERSBURG	0	22	14	5	3	62.70
PILLOW	0	13	11	1	0	86.36
REED	0	194	159	26	9	81.84
RUSH	0	275	247	22	6	89.82
UPPER PAXTON	0	675	443	216	16	65.59
WASHINGTON	0	388	311	67	10	80.28
WAYNE	0	284	231	47	6	81.51
WICONISCO	0	130	110	13	7	84.78
WILLIAMS	0	152	125	15	12	82.60
WILLIAMSTOWN	0	9	4	1	5	41.01
CONEWAGO	1	343	182	145	17	52.88
DAUPHIN	1	13	9	2	2	66.90
DERRY	1	648	274	288	86	42.25
EAST HANOVER	1	753	582	151	20	77.31
HARRISBURG	1	339	135	77	127	39.77
HIGHSPIRE	1	30	13	6	11	42.37
HUMMELSTOWN	1	30	17	7	6	54.86
LONDONDERRY	1	614	398	169	46	64.84
LOWER PAXTON	1	535	391	96	48	73.09
LOWER SWATARA	1	325	164	107	54	50.44
MIDDLE PAXTON	1	919	795	88	36	86.49
MIDDLETOWN	1	58	22	9	27	37.57
PAXTANG	1	10	5	1	4	53.56
PENBROOK	1	2	1	0	0	58.37
ROYALTON	1	10	6	3	2	52.64

(continued)

Municipality	MS4	Total 35 ft buffer acres	Conservation opportunity areas (acres)	Restoration opportunity areas (acres)	Developed areas (acres)	Percent forest buffer coverage (%)
SOUTH HANOVER	1	292	229	54	9	78.47
STEELTON	1	96	20	13	63	21.02
SUSQUEHANNA	1	352	228	71	54	64.67
SWATARA	1	311	161	74	76	51.93
WEST HANOVER	1	442	343	79	20	77.70

Non-MS4 Regulated Municipalities



MS4 Regulated Municipalities

