

Elk County Forest Buffer Summary

35 ft. Width

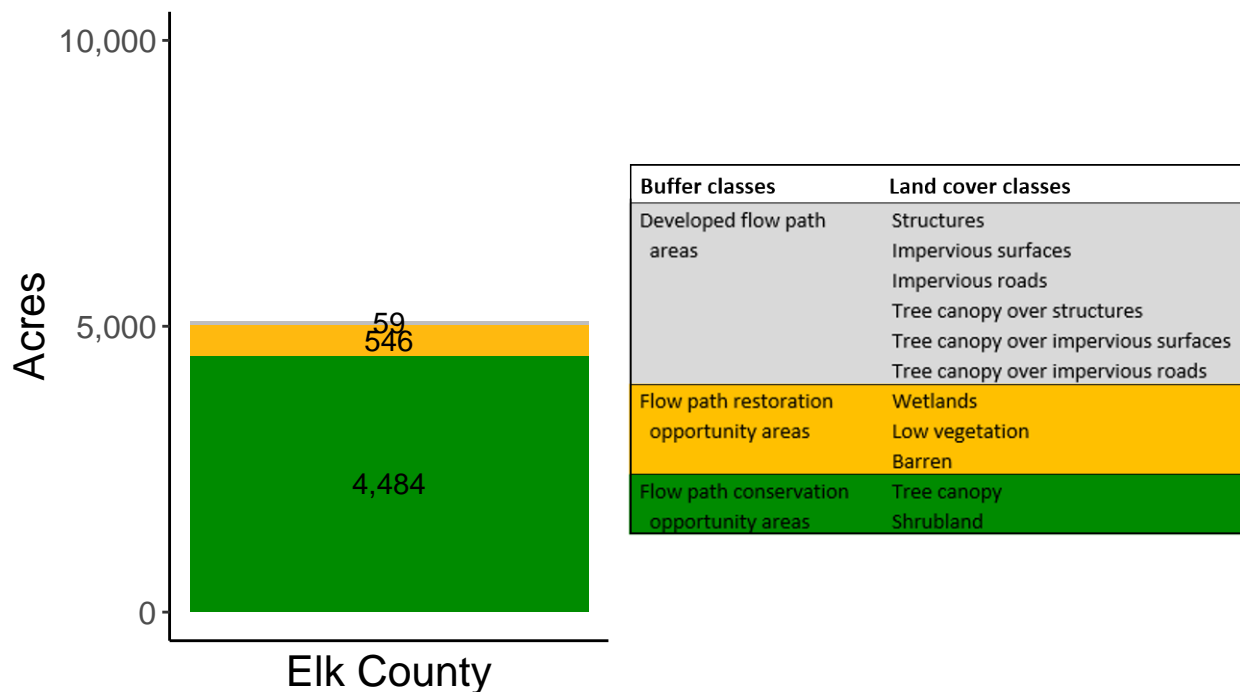
Created by: Chesapeake Conservancy, February 2019

Data Description

The buffer analysis is based on two Geospatial Information Systems (GIS) datasets created by Chesapeake Conservancy and partners. The enhanced flow path water network dataset was derived from 2006 & 2008 PAMAP Statewide digital elevation models (DEMs), developed from Lidar data. Channel heads were assigned where upslope drainage accumulation reached 60 acres. Flow paths were widened based on US Geological Survey regional curves and enhanced with high-resolution land cover. The high-resolution land cover dataset was derived from 2013 National Agriculture Inventory Program imagery. Both datasets have a spatial resolution of 1 meter. Pixels from the high-resolution land cover dataset within 35 ft. and 100 ft. distances of the enhanced flow path water network were considered in the buffer analysis. For more information and to download datasets, go to www.ChesapeakeConservancy.org and search for “data downloader.”

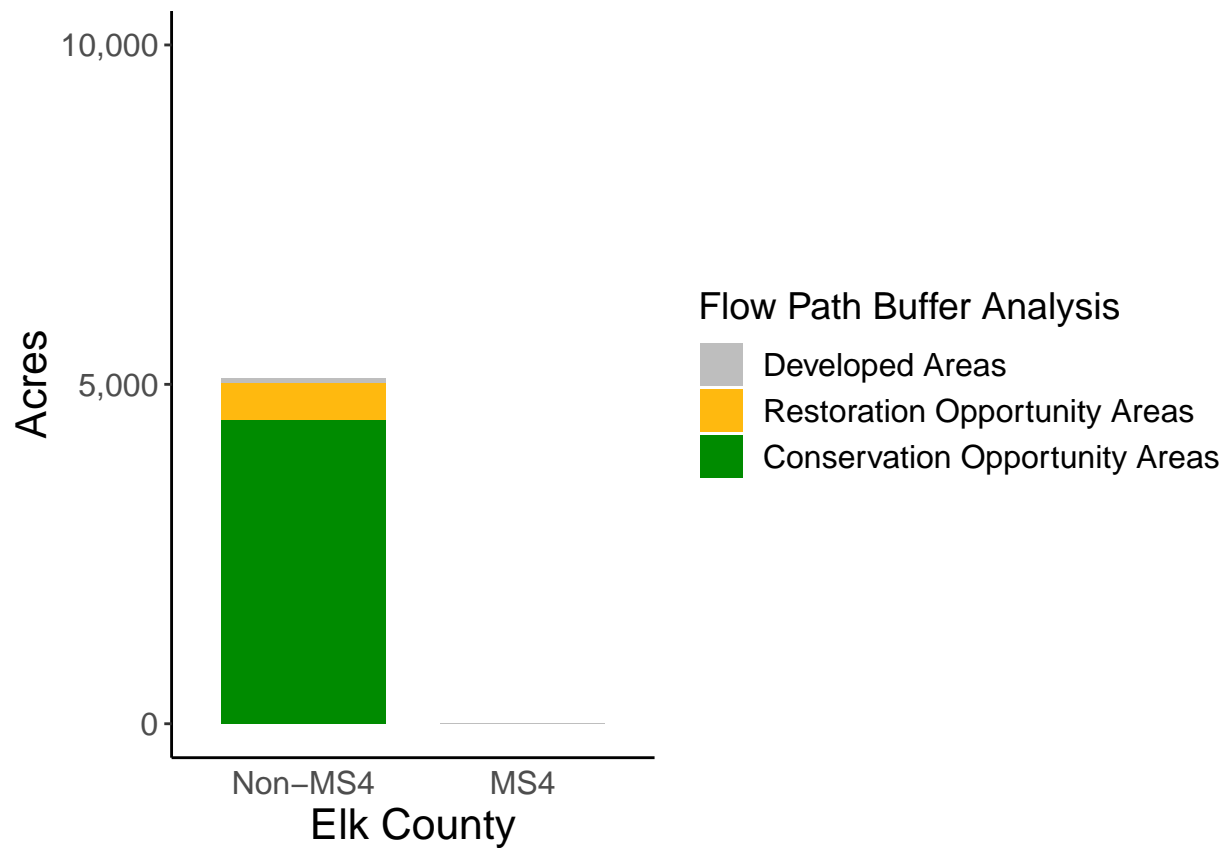
County Summary

Elk County contains a total of 546 acres of flow path restoration opportunity area, and has 88.11% forest buffer coverage. Elk County has incomplete buffer data coverage.



Municipal Separate Storm Sewer System (MS4) Regulated Municipality Summary

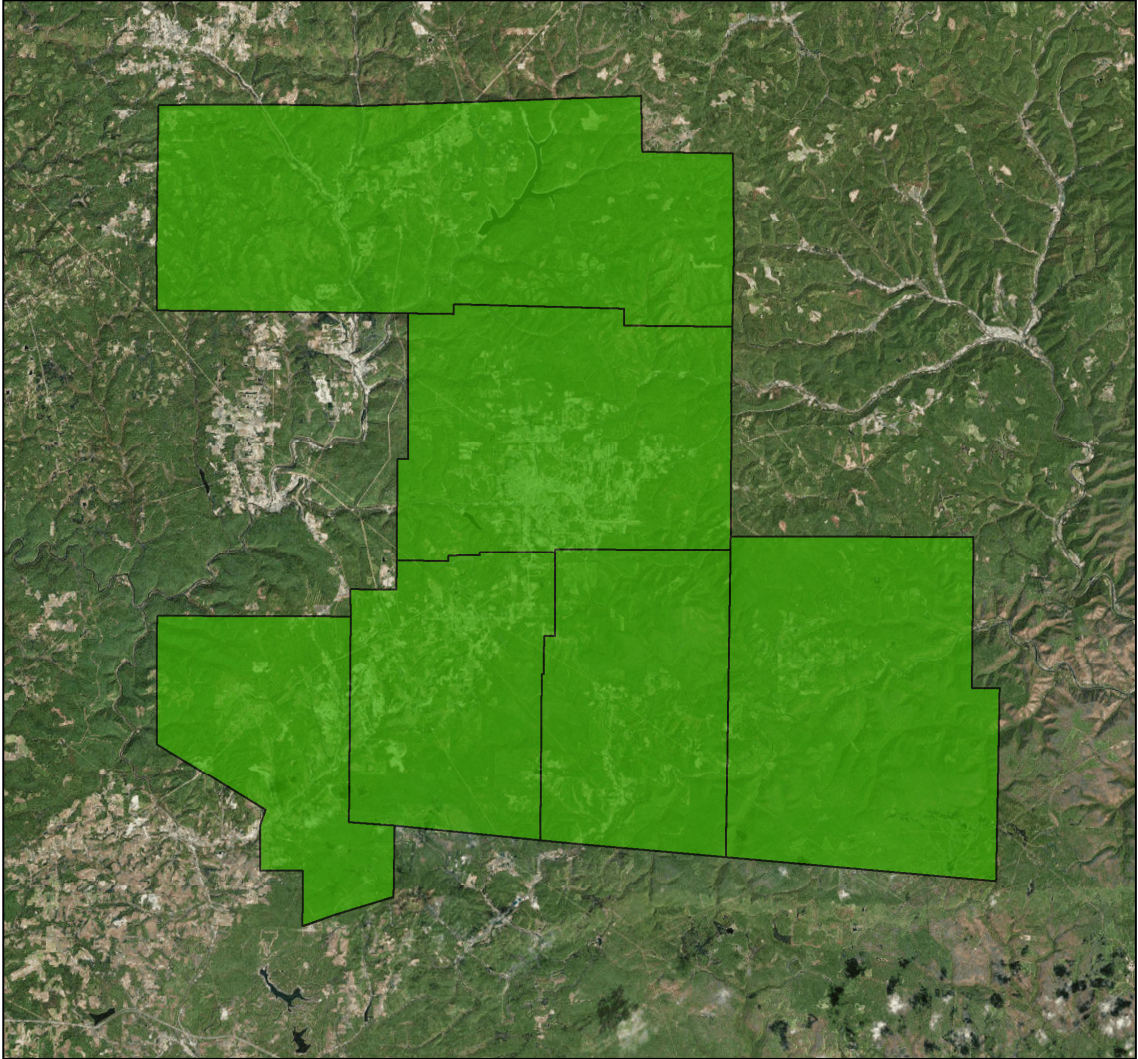
Totals by Municipalities



Elk County does not contain any MS4 Municipalities.

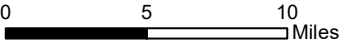
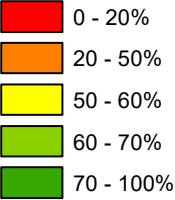
Averages for MS4 and Non-MS4 Municipalities

	Non-MS4	MS4
Conservation Opportunity Areas (Acres)	747	0
Restoration Opportunity Areas (Acres)	91	0
Developed Areas (Acres)	10	0
Total Buffer Acres	848	0
Percent Forest Buffer Coverage (%)	90.73	0.00



Elk County Municipalities

35' Buffer Coverage (%)



Non-MS4 Regulated Municipalities

