

# Franklin County Forest Buffer Summary

## 35 ft. Width

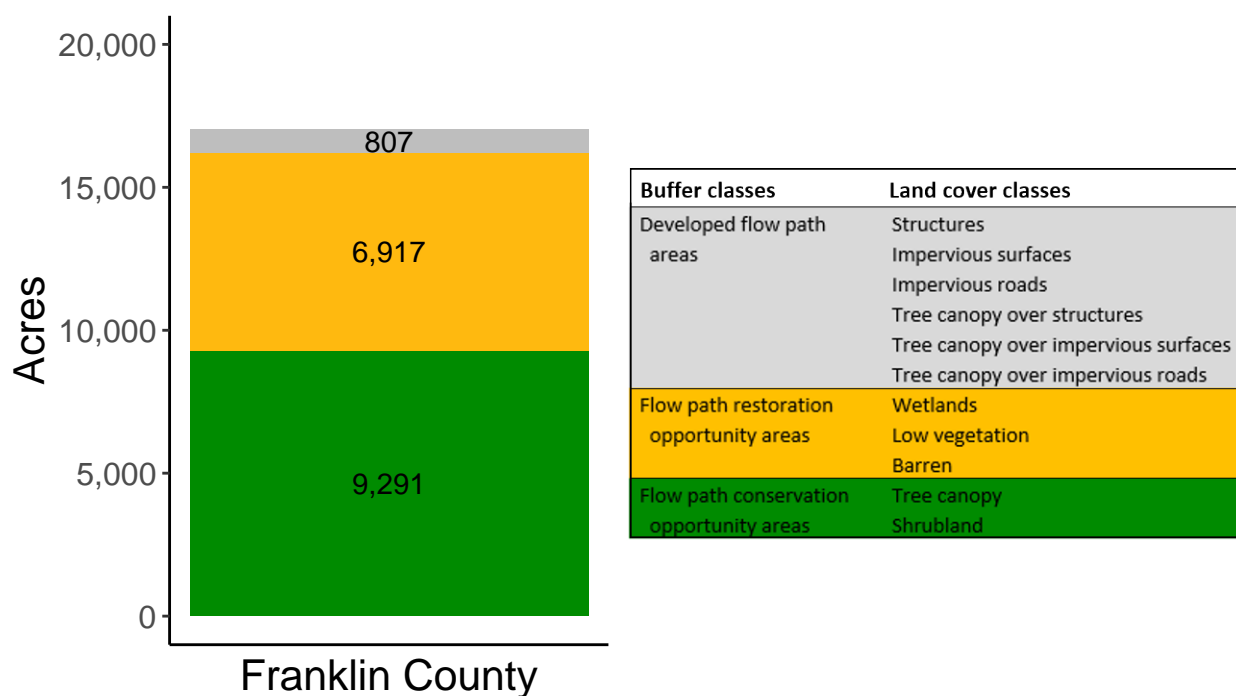
*Created by: Chesapeake Conservancy, February 2019*

### Data Description

The buffer analysis is based on two Geospatial Information Systems (GIS) datasets created by Chesapeake Conservancy and partners. The enhanced flow path water network dataset was derived from 2006 & 2008 PAMAP Statewide digital elevation models (DEMs), developed from Lidar data. Channel heads were assigned where upslope drainage accumulation reached 60 acres. Flow paths were widened based on US Geological Survey regional curves and enhanced with high-resolution land cover. The high-resolution land cover dataset was derived from 2013 National Agriculture Inventory Program imagery. Both datasets have a spatial resolution of 1 meter. Pixels from the high-resolution land cover dataset within 35 ft. and 100 ft. distances of the enhanced flow path water network were considered in the buffer analysis. For more information and to download datasets, go to [www.ChesapeakeConservancy.org](http://www.ChesapeakeConservancy.org) and search for “data downloader.”

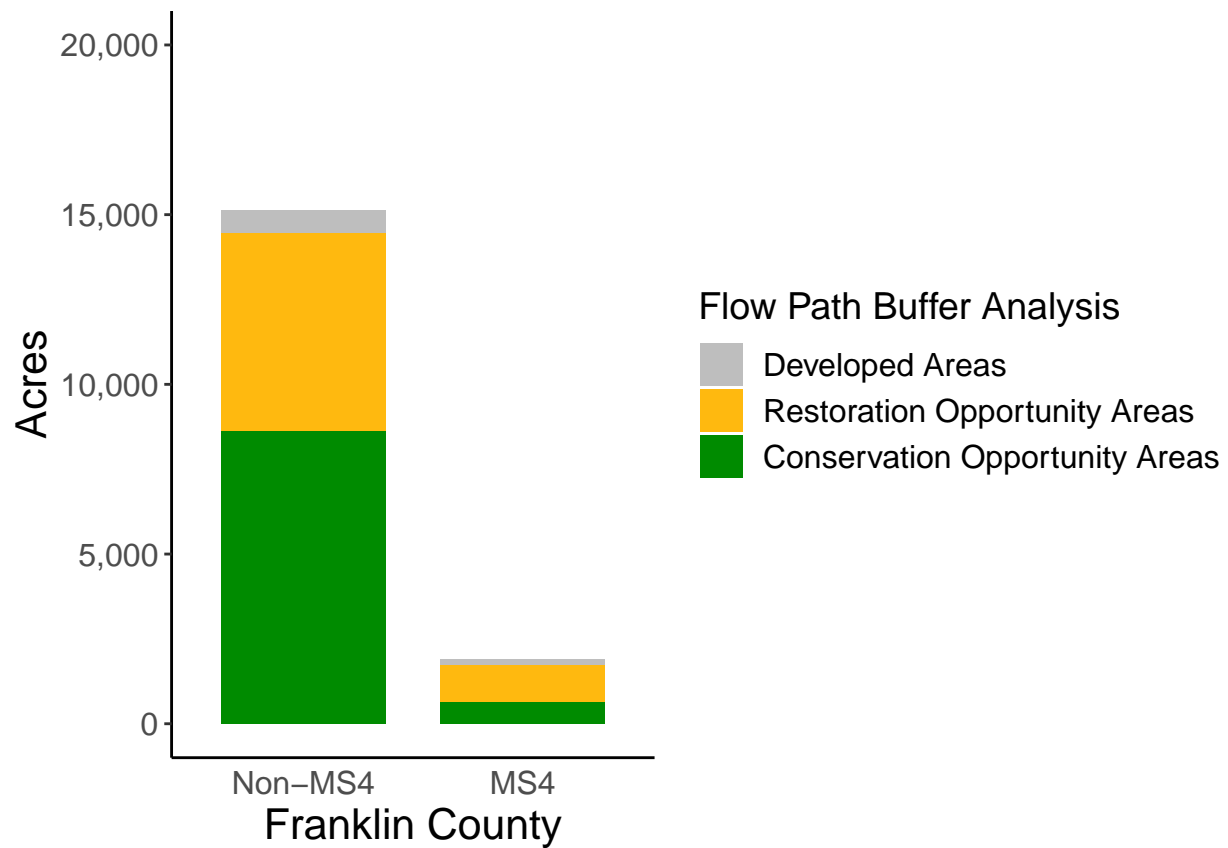
### County Summary

Franklin County contains a total of 6,917 acres of flow path restoration opportunity area, and has 54.6% forest buffer coverage. Franklin County has complete buffer data coverage.



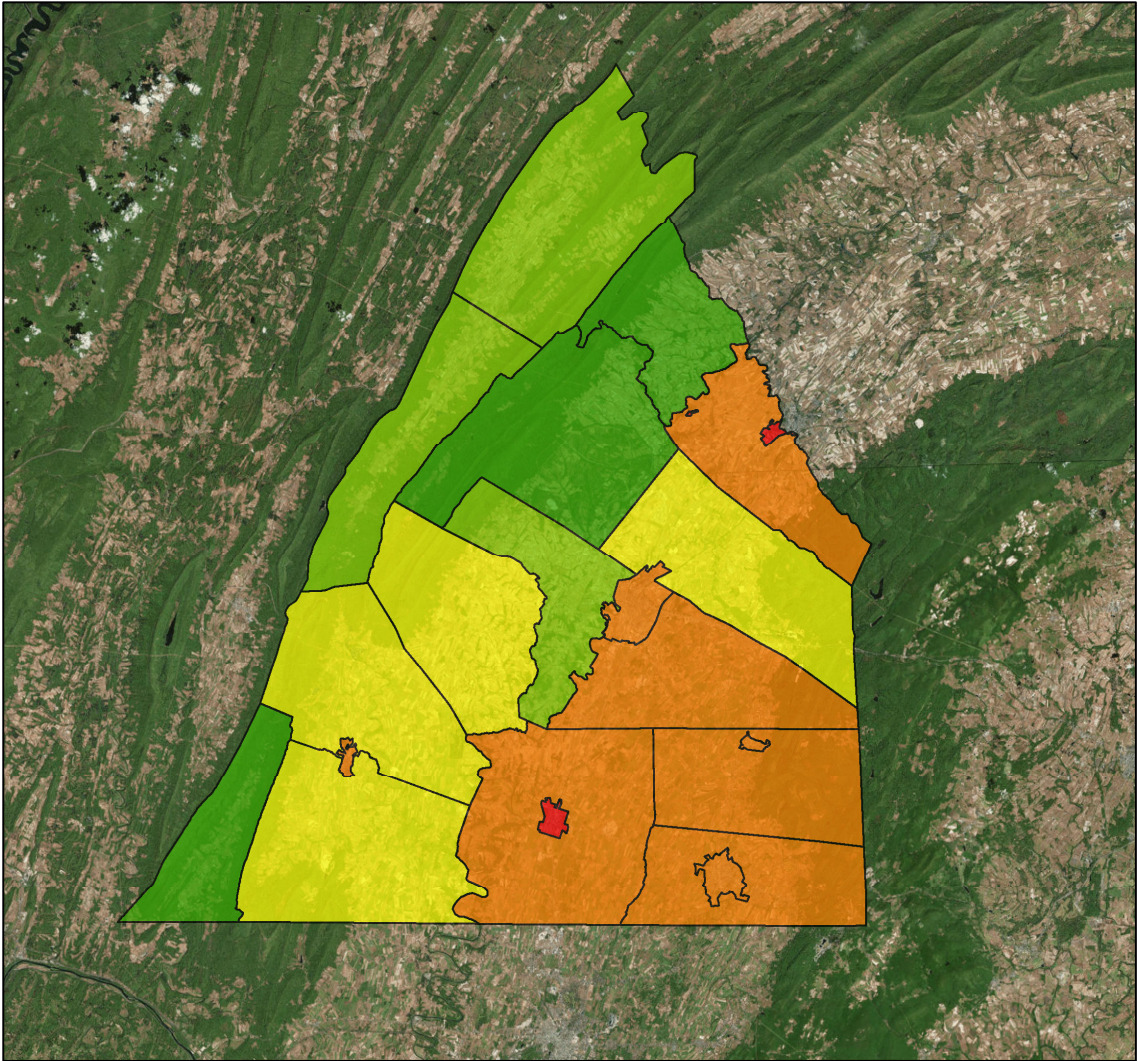
# Municipal Separate Storm Sewer System (MS4) Regulated Municipality Summary

## Totals by Municipalities

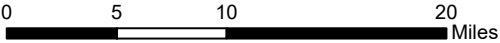


## Averages for MS4 and Non-MS4 Municipalities

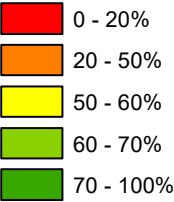
	Non-MS4	MS4
Conservation Opportunity Areas (Acres)	454	328
Restoration Opportunity Areas (Acres)	307	541
Developed Areas (Acres)	35	74
Total Buffer Acres	796	943
Percent Forest Buffer Coverage (%)	48.70	33.05



**Franklin County Municipalities**

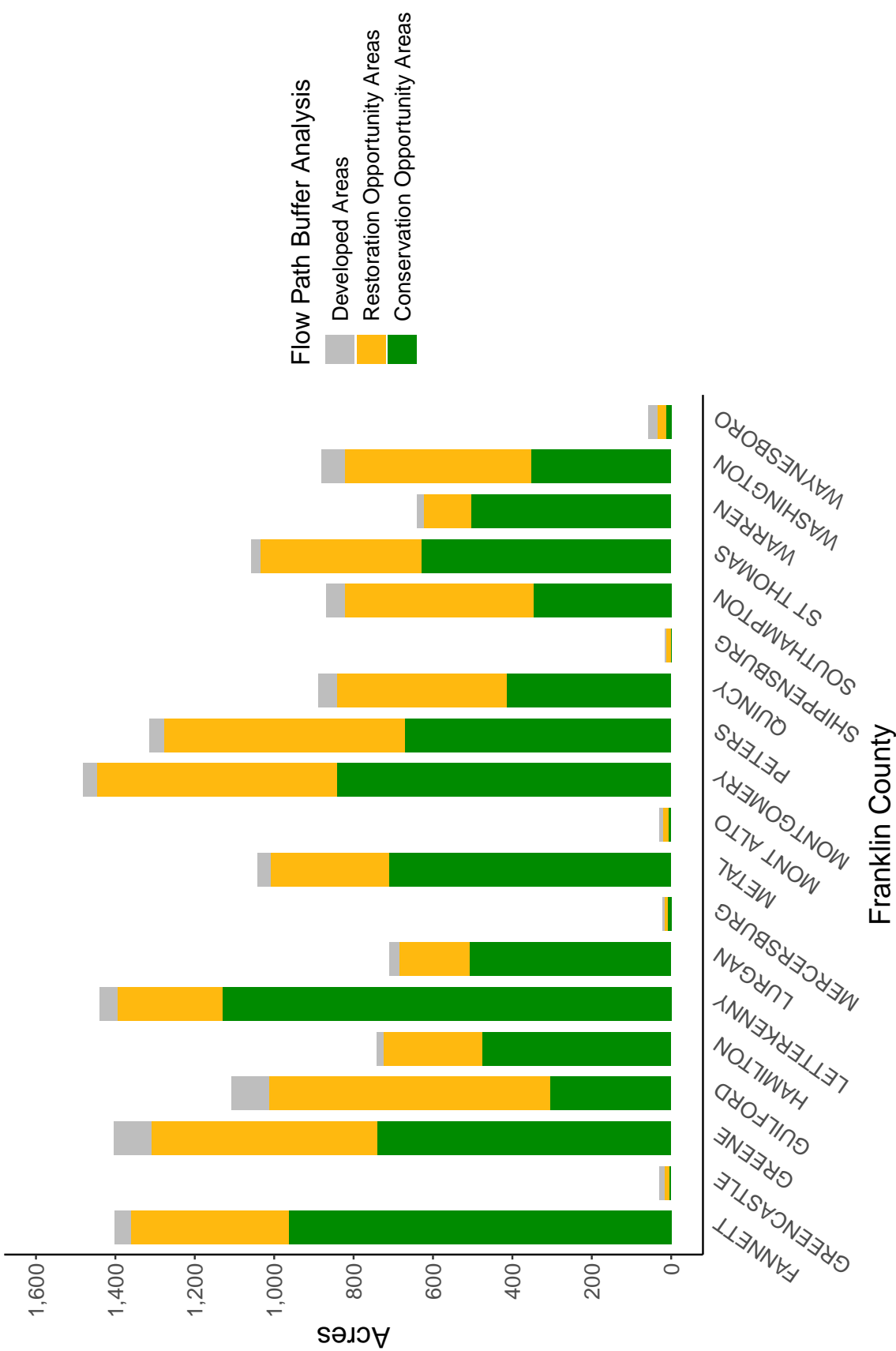


**35' Buffer Coverage (%)**



Municipality	MS4	Total 35 ft buffer acres	Conservation opportunity areas (acres)	Restoration opportunity areas (acres)	Developed areas (acres)	Percent forest buffer coverage (%)
FANNETT	0	1,402	963	399	40	68.68
GREENCASTLE	0	30	5	11	13	17.87
GREENE	0	1,404	741	569	95	52.75
GUILFORD	0	1,108	306	706	95	27.66
HAMILTON	0	742	475	250	17	64.03
LETTERKENNY	0	1,438	1,130	264	45	78.57
LURGAN	0	709	508	177	24	71.58
MERCERSBURG	0	21	8	9	4	39.11
METAL	0	1,042	711	298	33	68.22
MONT ALTO	0	29	7	14	8	24.50
MONTGOMERY	0	1,480	842	605	34	56.86
PETERS	0	1,313	671	606	36	51.09
QUINCY	0	888	415	428	46	46.67
SHIPPENSBURG	0	16	2	10	3	15.16
SOUTHAMPTON	0	868	348	474	47	40.08
ST THOMAS	0	1,059	630	406	22	59.51
WARREN	0	640	505	118	16	78.92
WASHINGTON	0	880	353	469	58	40.13
WAYNESBORO	0	59	14	22	22	23.82
ANTRIM	1	1,702	599	1,013	90	35.21
CHAMBERSBURG	1	184	57	68	59	30.88

Non-MS4 Regulated Municipalities



MS4 Regulated Municipalities

