

Fulton County Forest Buffer Summary

35 ft. Width

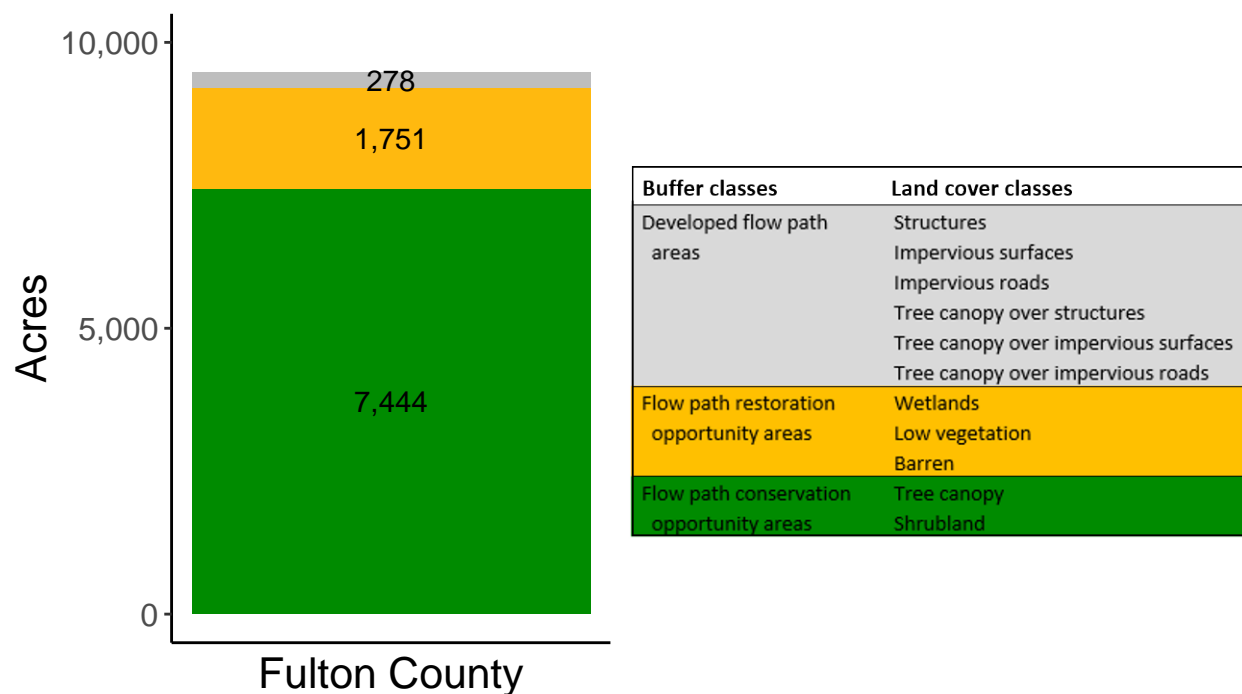
Created by: Chesapeake Conservancy, February 2019

Data Description

The buffer analysis is based on two Geospatial Information Systems (GIS) datasets created by Chesapeake Conservancy and partners. The enhanced flow path water network dataset was derived from 2006 & 2008 PAMAP Statewide digital elevation models (DEMs), developed from Lidar data. Channel heads were assigned where upslope drainage accumulation reached 60 acres. Flow paths were widened based on US Geological Survey regional curves and enhanced with high-resolution land cover. The high-resolution land cover dataset was derived from 2013 National Agriculture Inventory Program imagery. Both datasets have a spatial resolution of 1 meter. Pixels from the high-resolution land cover dataset within 35 ft. and 100 ft. distances of the enhanced flow path water network were considered in the buffer analysis. For more information and to download datasets, go to www.ChesapeakeConservancy.org and search for “data downloader.”

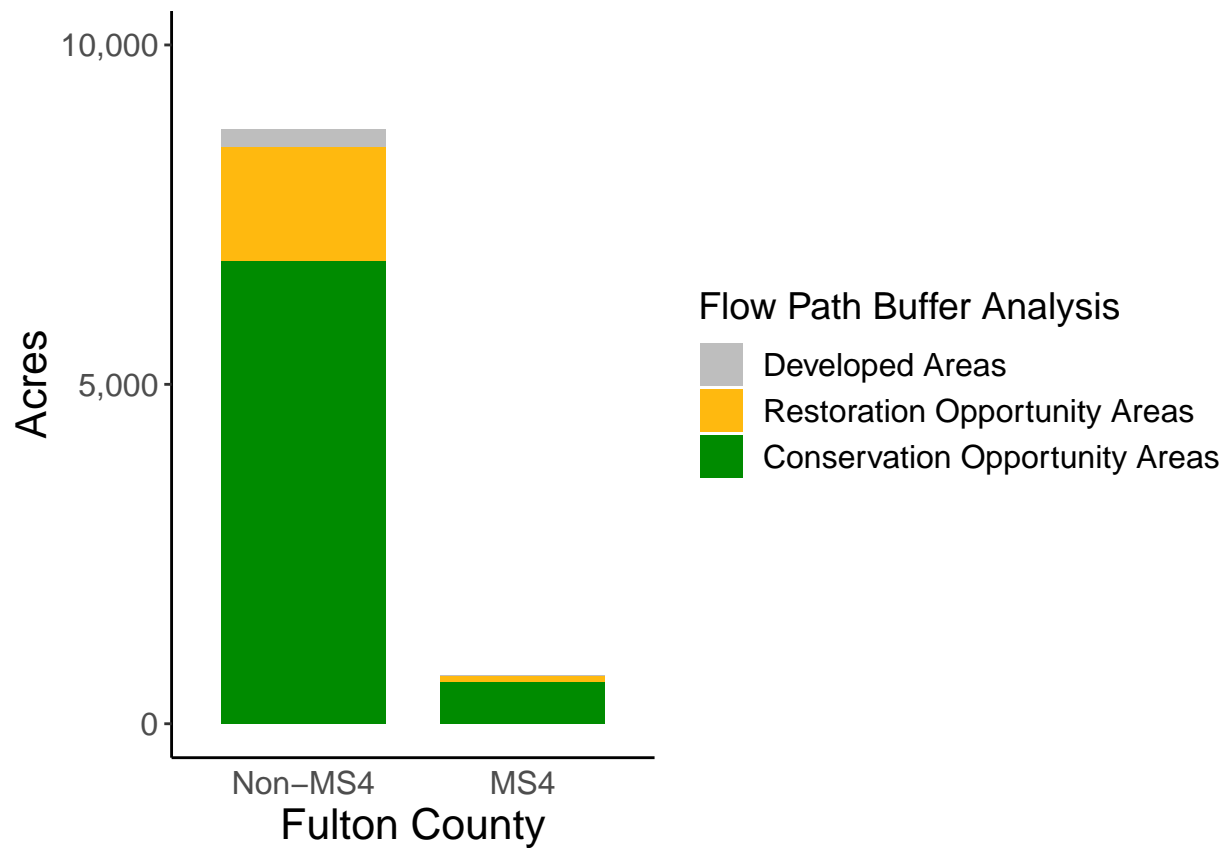
County Summary

Fulton County contains a total of 1,751 acres of flow path restoration opportunity area, and has 78.59% forest buffer coverage. Fulton County has complete buffer data coverage.



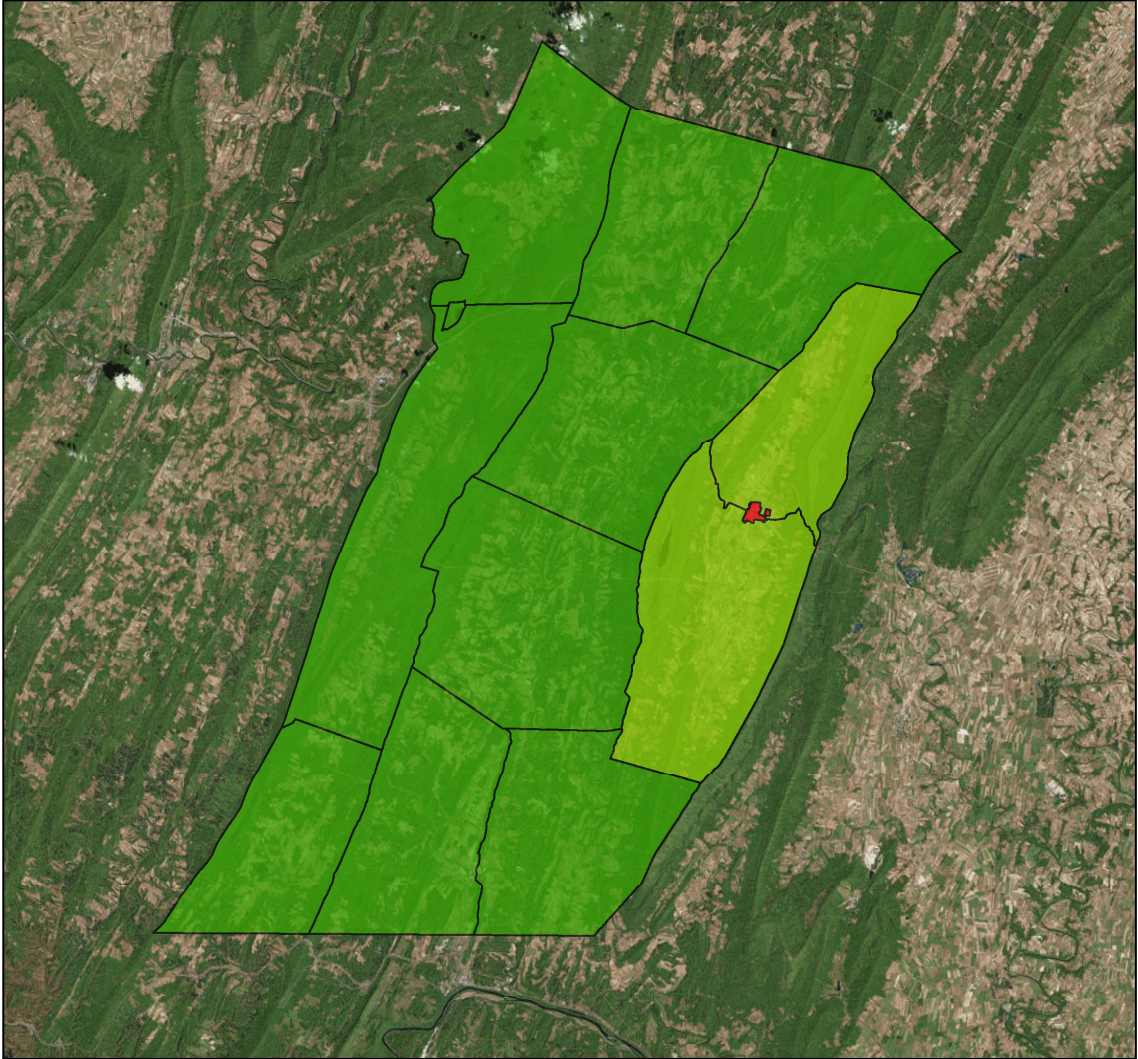
Municipal Separate Storm Sewer System (MS4) Regulated Municipality Summary

Totals by Municipalities

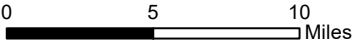


Averages for MS4 and Non-MS4 Municipalities

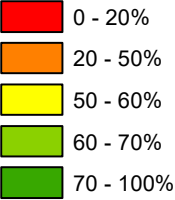
	Non-MS4	MS4
Conservation Opportunity Areas (Acres)	569	619
Restoration Opportunity Areas (Acres)	139	78
Developed Areas (Acres)	22	13
Total Buffer Acres	730	711
Percent Forest Buffer Coverage (%)	73.24	87.12



Fulton County Municipalities

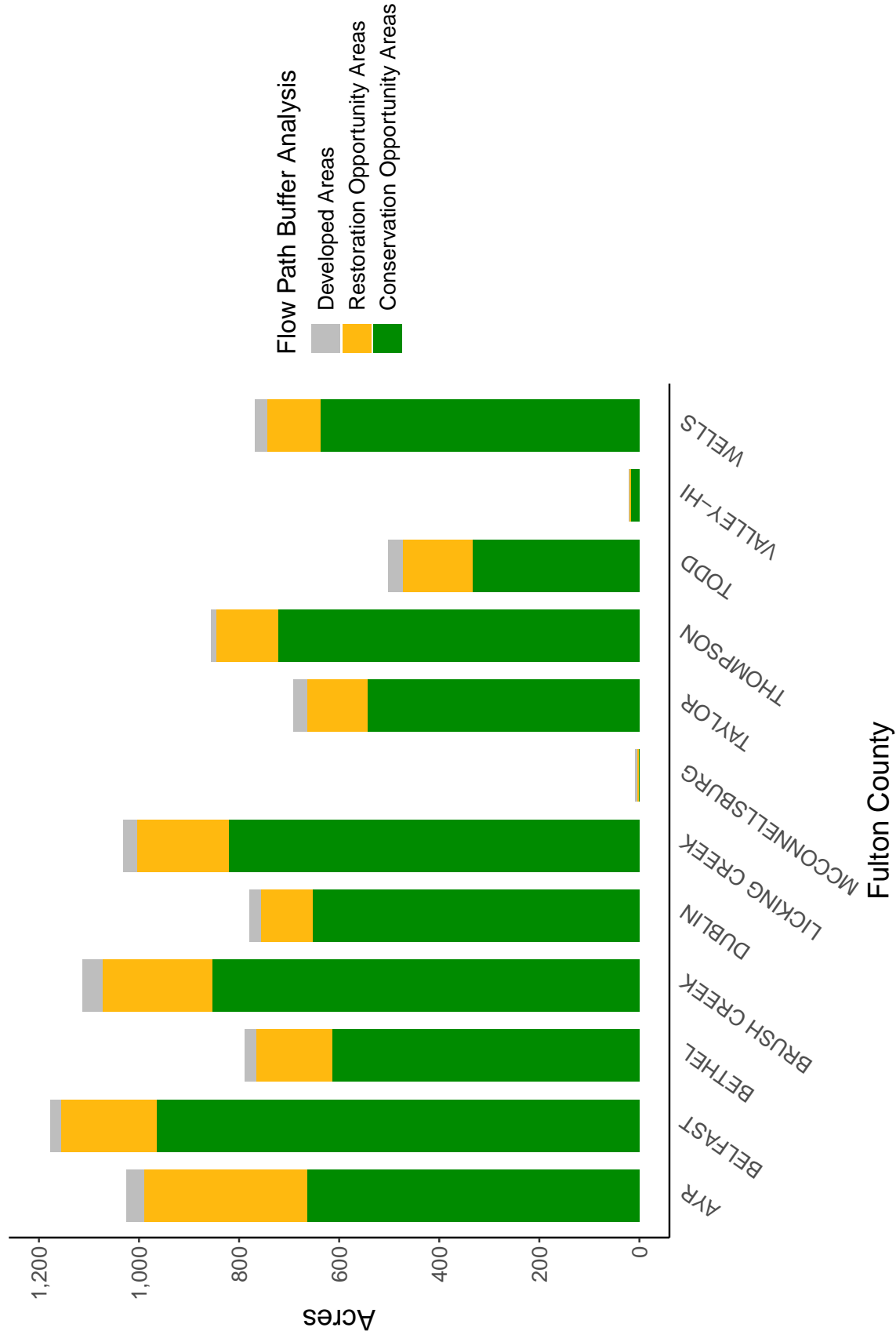


35' Buffer Coverage (%)



Municipality	MS4	Total 35 ft buffer acres	Conservation opportunity areas (acres)	Restoration opportunity areas (acres)	Developed areas (acres)	Percent forest buffer coverage (%)
AYR	0	1,025	664	325	36	64.79
BELFAST	0	1,176	965	191	21	81.99
BETHEL	0	789	614	153	22	77.86
BRUSH CREEK	0	1,113	854	219	40	76.69
DUBLIN	0	780	653	104	22	83.75
LICKING CREEK	0	1,032	821	184	27	79.55
MCCONNELLSBURG	0	8	2	2	4	19.86
TAYLOR	0	692	544	120	28	78.62
THOMPSON	0	856	722	124	10	84.32
TODD	0	502	333	140	29	66.21
VALLEY-HI	0	20	17	3	1	82.26
WELLS	0	769	638	106	24	82.99
UNION	1	711	619	78	13	87.12

Non-MS4 Regulated Municipalities



MS4 Regulated Municipalities

