

Juniata County Forest Buffer Summary

35 ft. Width

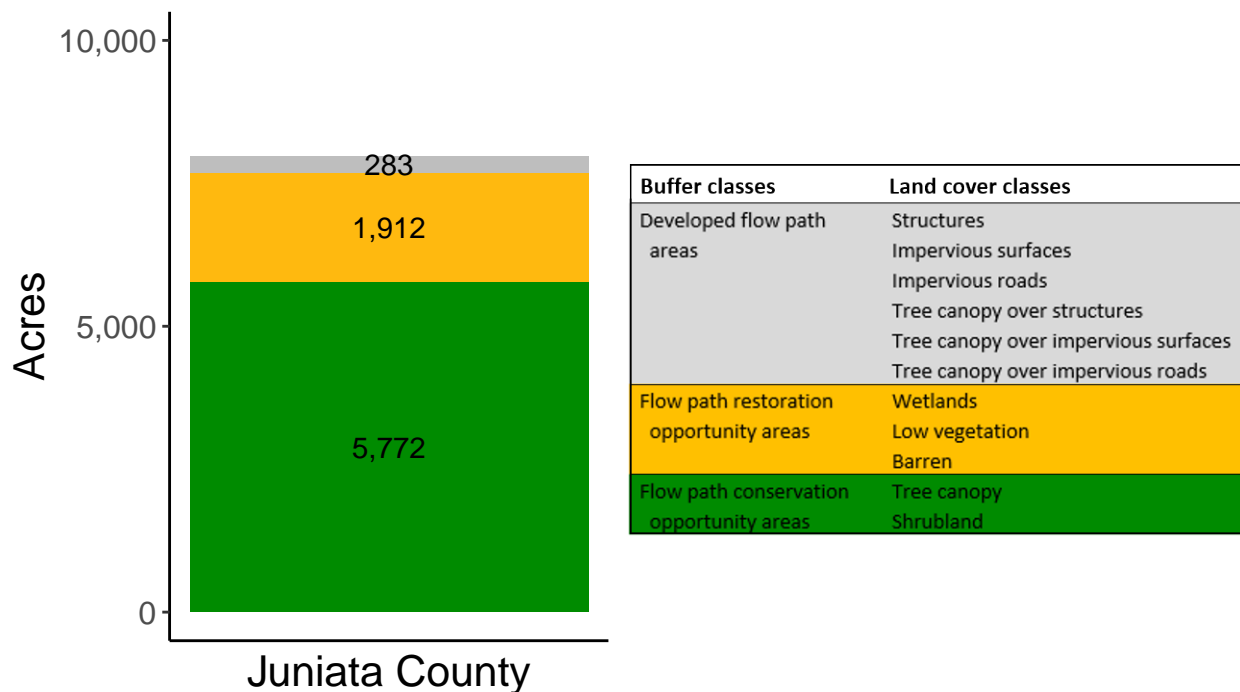
Created by: Chesapeake Conservancy, February 2019

Data Description

The buffer analysis is based on two Geospatial Information Systems (GIS) datasets created by Chesapeake Conservancy and partners. The enhanced flow path water network dataset was derived from 2006 & 2008 PAMAP Statewide digital elevation models (DEMs), developed from Lidar data. Channel heads were assigned where upslope drainage accumulation reached 60 acres. Flow paths were widened based on US Geological Survey regional curves and enhanced with high-resolution land cover. The high-resolution land cover dataset was derived from 2013 National Agriculture Inventory Program imagery. Both datasets have a spatial resolution of 1 meter. Pixels from the high-resolution land cover dataset within 35 ft. and 100 ft. distances of the enhanced flow path water network were considered in the buffer analysis. For more information and to download datasets, go to www.ChesapeakeConservancy.org and search for “data downloader.”

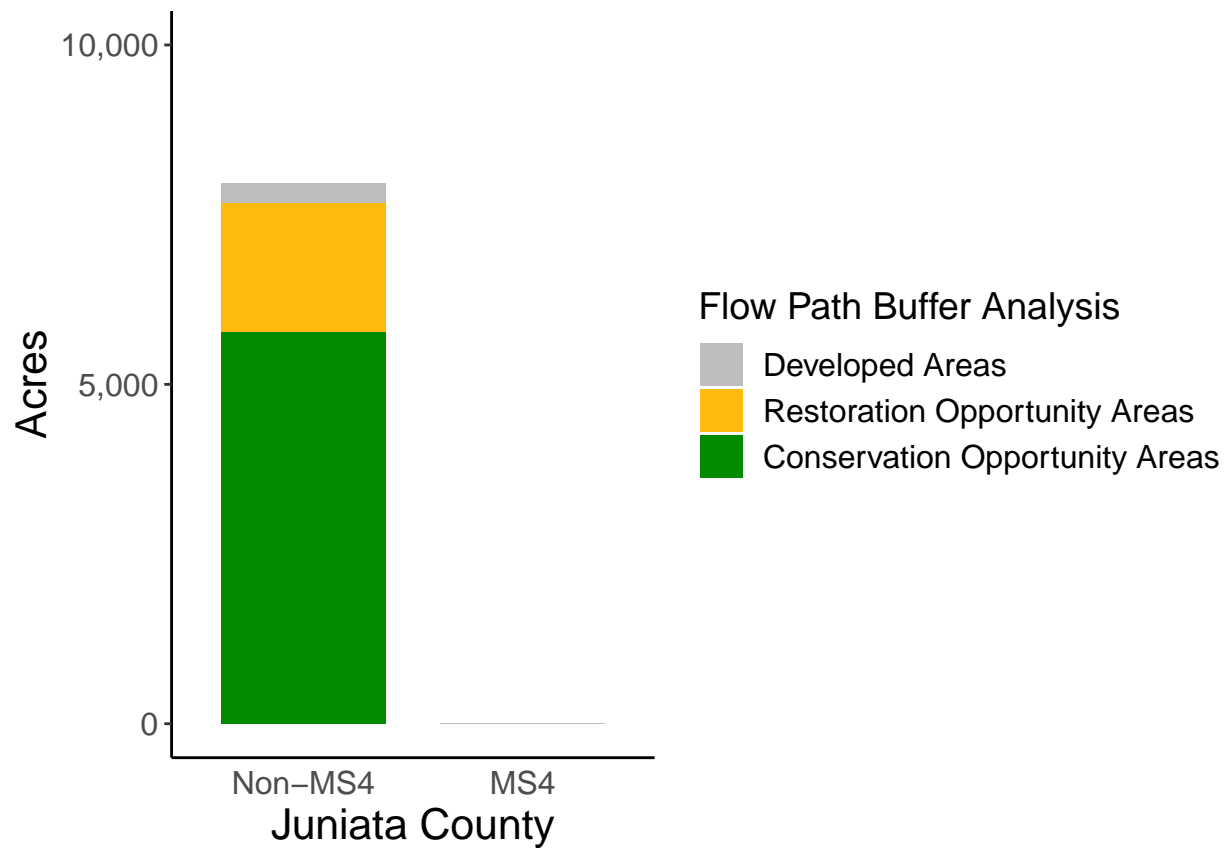
County Summary

Juniata County contains a total of 1,912 acres of flow path restoration opportunity area, and has 72.45% forest buffer coverage. Juniata County has complete buffer data coverage.



Municipal Separate Storm Sewer System (MS4) Regulated Municipality Summary

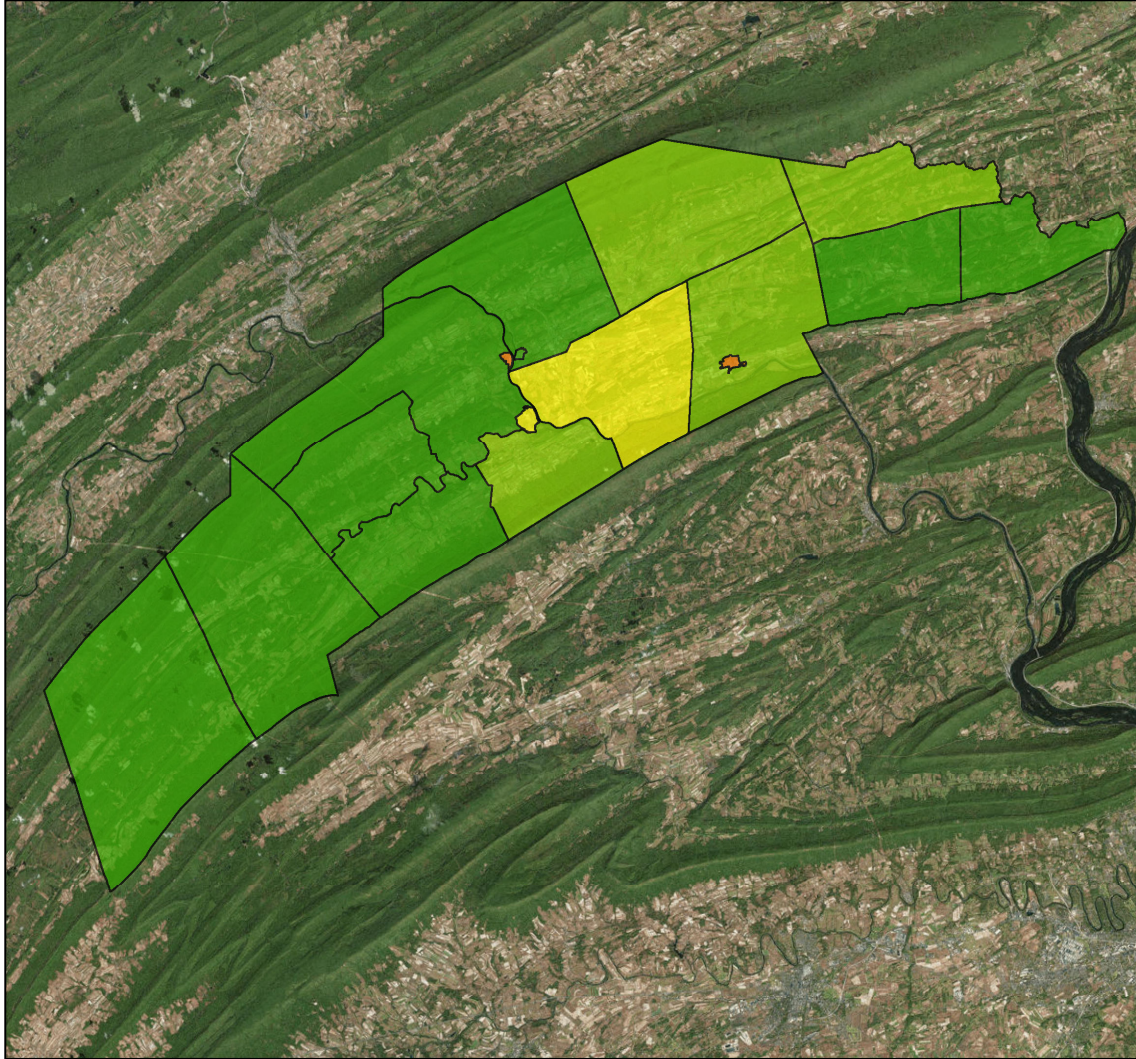
Totals by Municipalities



Juniata County does not contain any MS4 Municipalities.

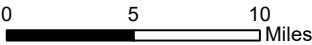
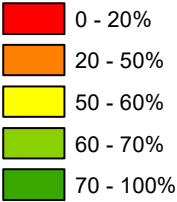
Averages for MS4 and Non-MS4 Municipalities

	Non-MS4	MS4
Conservation Opportunity Areas (Acres)	340	0
Restoration Opportunity Areas (Acres)	112	0
Developed Areas (Acres)	17	0
Total Buffer Acres	469	0
Percent Forest Buffer Coverage (%)	66.43	0.00



Juniata County Municipalities

35' Buffer Coverage (%)



Municipality	MS4	Total 35 ft buffer acres	Conservation opportunity areas (acres)	Restoration opportunity areas (acres)	Developed areas (acres)	Percent forest buffer coverage (%)
BEALE	0	442	329	104	9	74.43
DELAWARE	0	617	426	156	36	68.94
FAYETTE	0	840	554	252	34	65.92
FERMANAGH	0	640	465	142	34	72.59
GREENWOOD	0	410	345	56	10	84.07
LACK	0	984	789	180	16	80.11
MIFFLIN	0	8	2	3	4	25.31
MIFFLINTOWN	0	5	3	1	1	70.09
MILFORD	0	762	589	139	34	77.29
MONROE	0	386	264	105	16	68.58
PORT ROYAL	0	5	3	1	1	58.82
SPRUCE HILL	0	492	346	136	10	70.34
SUSQUEHANNA	0	369	269	86	14	72.87
THOMPSONTOWN	0	13	5	4	4	37.67
TURBETT	0	401	264	125	11	65.91
TUSCARORA	0	976	757	199	19	77.57
WALKER	0	616	362	223	31	58.83

*

Non-MS4 Regulated Municipalities

