

Lackawanna County Forest Buffer Summary

35 ft. Width

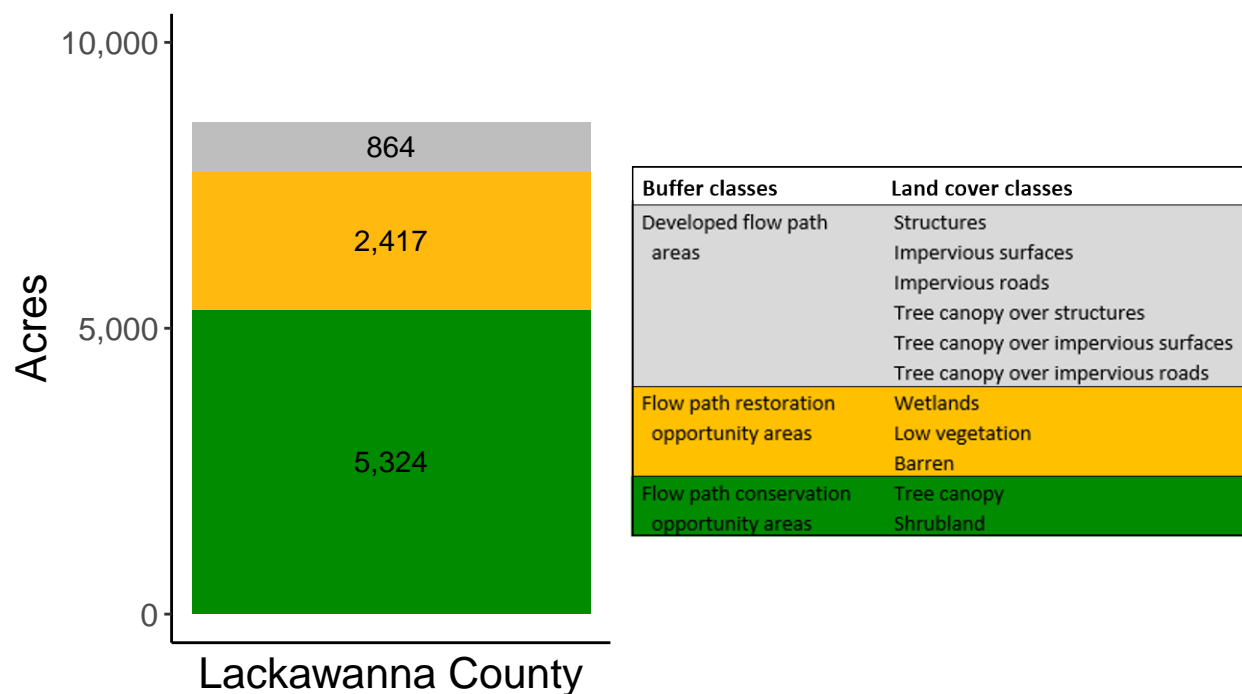
Created by: Chesapeake Conservancy, February 2019

Data Description

The buffer analysis is based on two Geospatial Information Systems (GIS) datasets created by Chesapeake Conservancy and partners. The enhanced flow path water network dataset was derived from 2006 & 2008 PAMAP Statewide digital elevation models (DEMs), developed from Lidar data. Channel heads were assigned where upslope drainage accumulation reached 60 acres. Flow paths were widened based on US Geological Survey regional curves and enhanced with high-resolution land cover. The high-resolution land cover dataset was derived from 2013 National Agriculture Inventory Program imagery. Both datasets have a spatial resolution of 1 meter. Pixels from the high-resolution land cover dataset within 35 ft. and 100 ft. distances of the enhanced flow path water network were considered in the buffer analysis. For more information and to download datasets, go to www.ChesapeakeConservancy.org and search for “data downloader.”

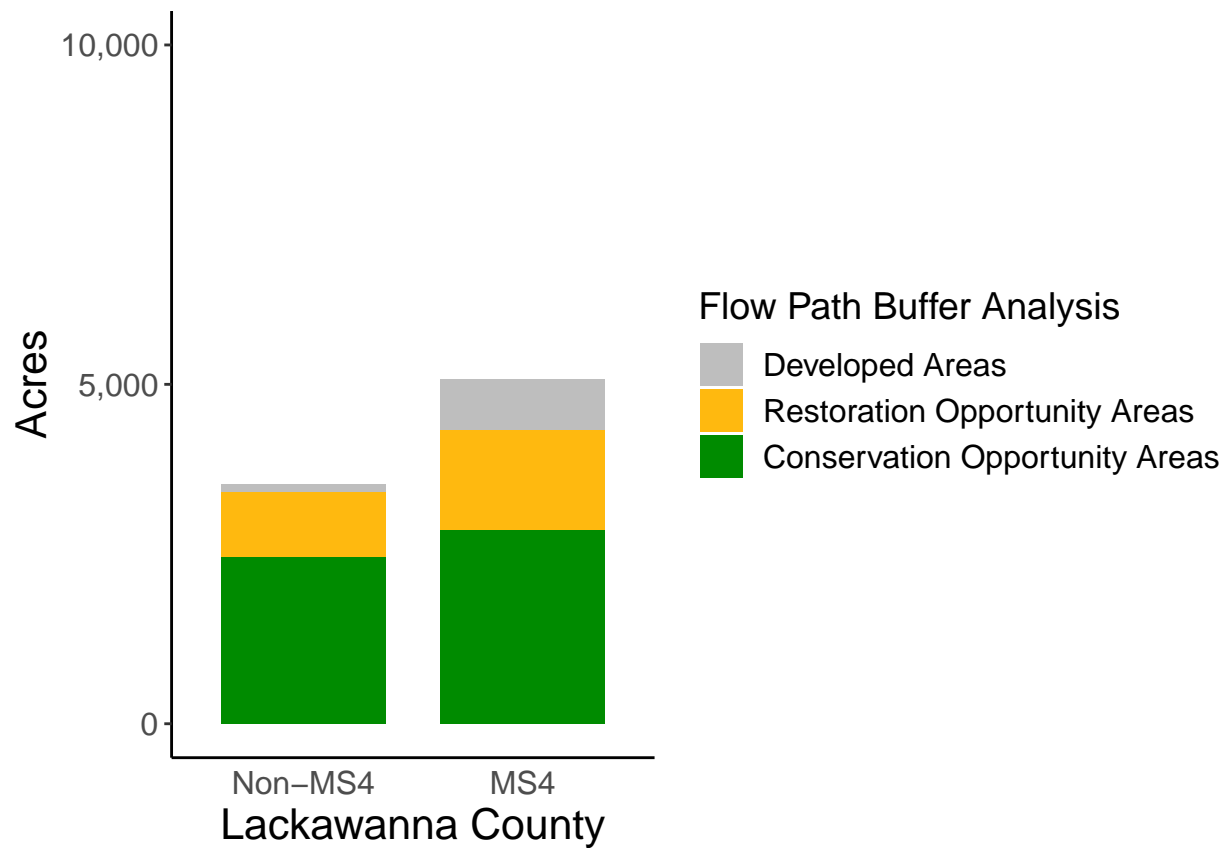
County Summary

Lackawanna County contains a total of 2,417 acres of flow path restoration opportunity area, and has 61.87% forest buffer coverage. Lackawanna County has incomplete buffer data coverage.



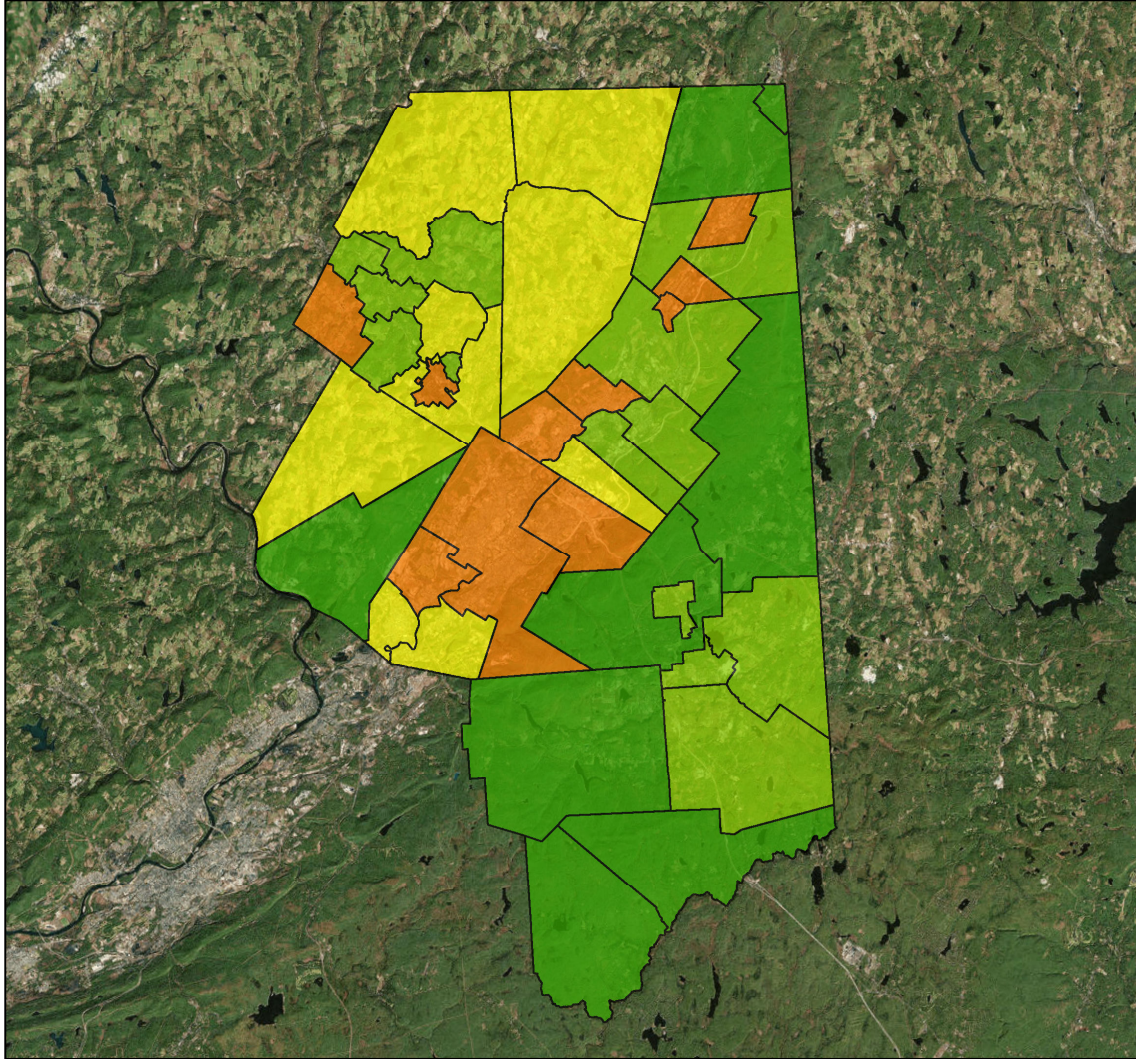
Municipal Separate Storm Sewer System (MS4) Regulated Municipality Summary

Totals by Municipalities

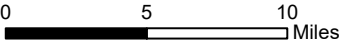


Averages for MS4 and Non-MS4 Municipalities

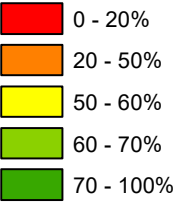
	Non-MS4	MS4
Conservation Opportunity Areas (Acres)	190	106
Restoration Opportunity Areas (Acres)	73	55
Developed Areas (Acres)	9	28
Total Buffer Acres	271	188
Percent Forest Buffer Coverage (%)	72.40	55.47



Lackawanna County Municipalities



35' Buffer Coverage (%)

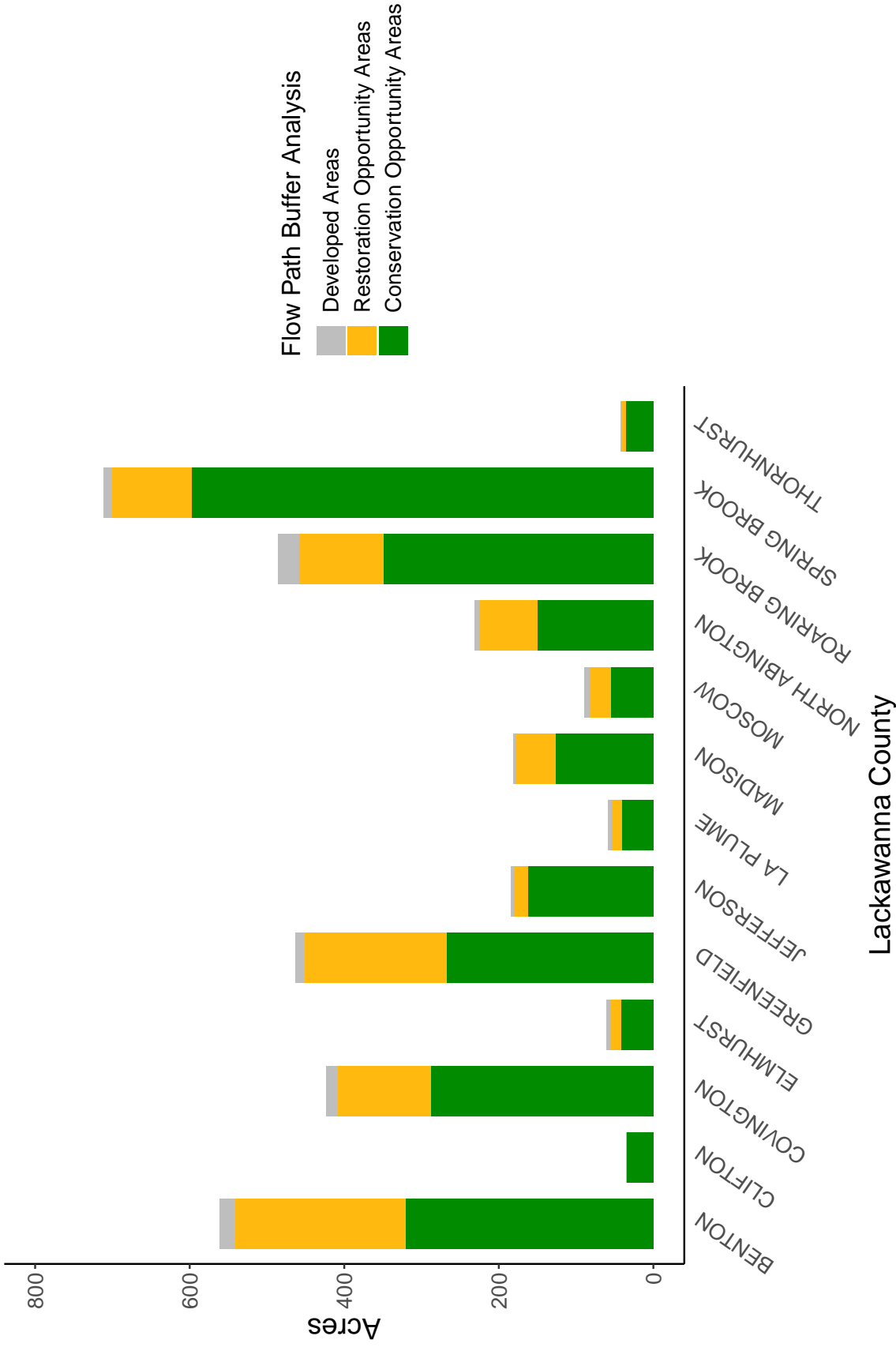


Municipality	MS4	Total 35 ft buffer acres	Conservation opportunity areas (acres)	Restoration opportunity areas (acres)	Developed areas (acres)	Percent forest buffer coverage (%)
BENTON	0	562	321	220	20	57.17
CLIFTON	0	35	34	1	0	96.50
COVINGTON	0	422	288	120	15	68.10
ELMHURST	0	60	42	14	5	69.64
GREENFIELD	0	462	268	183	12	57.93
JEFFERSON	0	184	162	18	4	88.00
LA PLUME	0	60	41	13	5	68.68
MADISON	0	182	126	52	3	69.45
MOSCOW	0	90	55	28	7	61.28
NORTH ABINGTON	0	230	150	75	6	64.99
ROARING BROOK	0	487	349	110	27	71.77
SPRING BROOK	0	712	597	104	11	83.88
THORNHURST	0	41	35	7	0	83.82
ARCHBALD	1	392	256	92	43	65.47
BLAKELY	1	110	48	32	30	43.97
CARBONDALE	1	285	179	72	35	62.63
CARBONDALE	1	107	43	36	29	39.90
CLARKS GREEN	1	6	4	1	1	68.67
CLARKS SUMMIT	1	34	15	10	9	44.03
DALTON	1	67	43	18	6	64.04
DICKSON CITY	1	147	61	44	42	41.58
DUNMORE	1	180	88	48	45	48.78
FELL	1	346	243	86	17	70.29
GLENBURN	1	115	74	34	7	63.99
JERMYN	1	43	18	14	10	42.31
JESSUP	1	161	106	32	23	65.99
MAYFIELD	1	62	25	19	19	39.51
MOOSIC	1	183	97	49	37	52.75
NEWTON	1	435	229	186	20	52.64
OLD FORGE	1	83	48	15	20	57.21
OLYPHANT	1	143	90	30	24	62.53
RANSOM	1	358	259	89	11	72.26
SCOTT	1	541	306	209	26	56.59
SCRANTON	1	583	260	121	202	44.65
SOUTH ABINGTON	1	183	96	54	33	52.17

(continued)

Municipality	MS4	Total 35 ft buffer acres	Conservation opportunity areas (acres)	Restoration opportunity areas (acres)	Developed areas (acres)	Percent forest buffer coverage (%)
TAYLOR	1	159	68	57	33	43.01
THROOP	1	124	74	32	18	59.70
VANDLING	1	35	29	6	1	81.16
WAVERLY	1	87	46	37	3	53.64
WEST ABINGTON	1	109	53	52	5	48.16

Non-MS4 Regulated Municipalities



MS4 Regulated Municipalities

