

Lebanon County Forest Buffer Summary

35 ft. Width

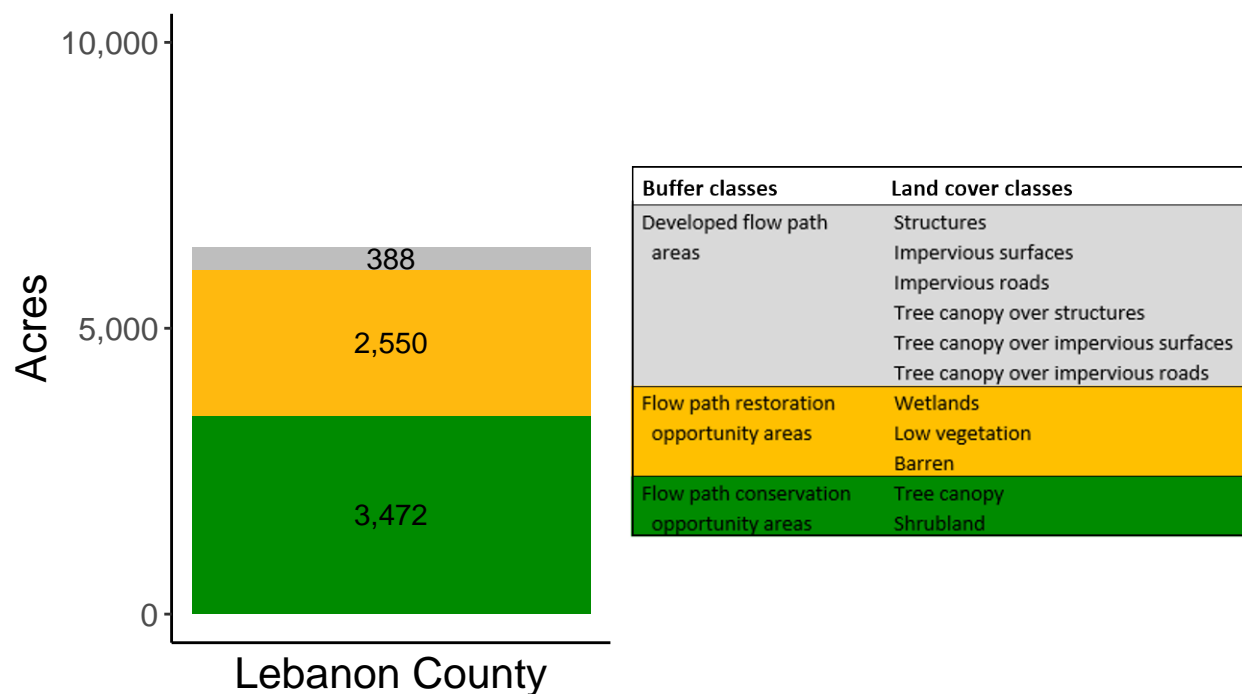
Created by: Chesapeake Conservancy, February 2019

Data Description

The buffer analysis is based on two Geospatial Information Systems (GIS) datasets created by Chesapeake Conservancy and partners. The enhanced flow path water network dataset was derived from 2006 & 2008 PAMAP Statewide digital elevation models (DEMs), developed from Lidar data. Channel heads were assigned where upslope drainage accumulation reached 60 acres. Flow paths were widened based on US Geological Survey regional curves and enhanced with high-resolution land cover. The high-resolution land cover dataset was derived from 2013 National Agriculture Inventory Program imagery. Both datasets have a spatial resolution of 1 meter. Pixels from the high-resolution land cover dataset within 35 ft. and 100 ft. distances of the enhanced flow path water network were considered in the buffer analysis. For more information and to download datasets, go to www.ChesapeakeConservancy.org and search for “data downloader.”

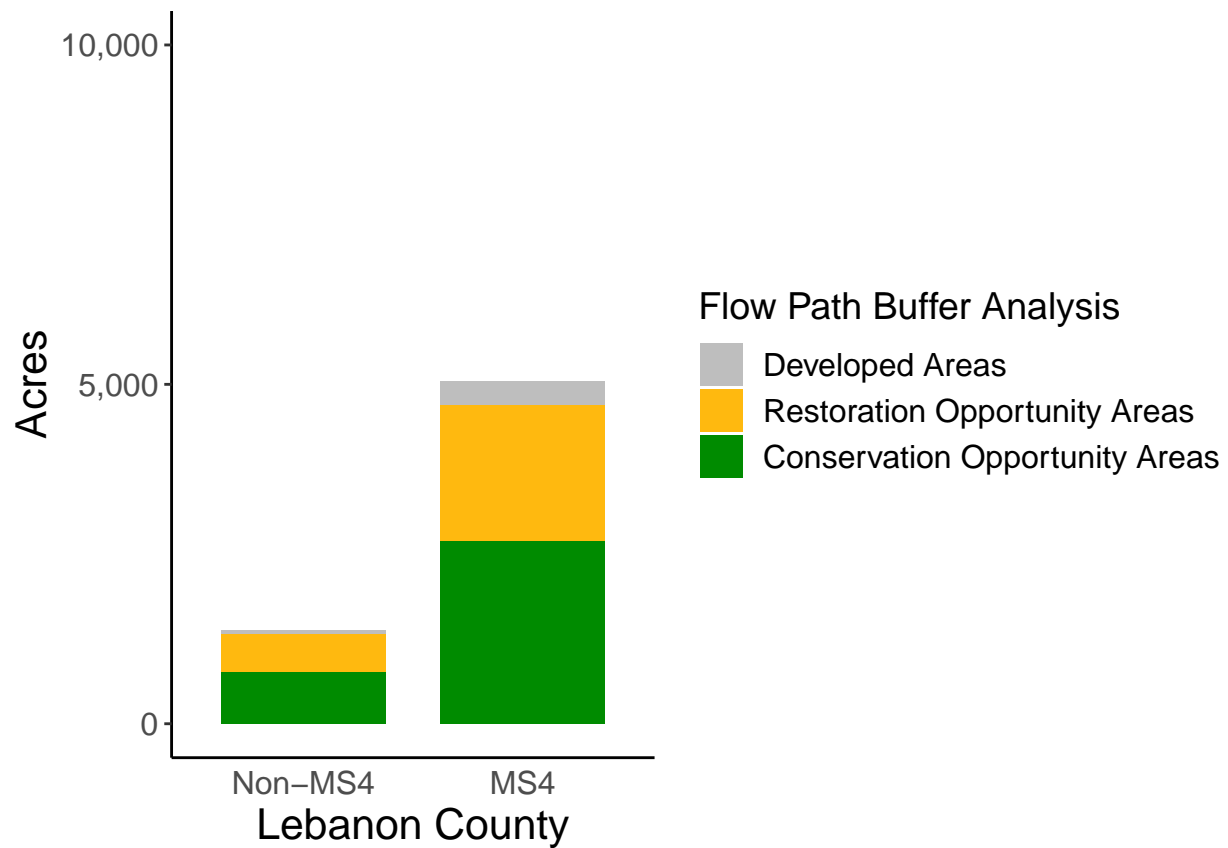
County Summary

Lebanon County contains a total of 2,550 acres of flow path restoration opportunity area, and has 54.17% forest buffer coverage. Lebanon County has incomplete buffer data coverage.



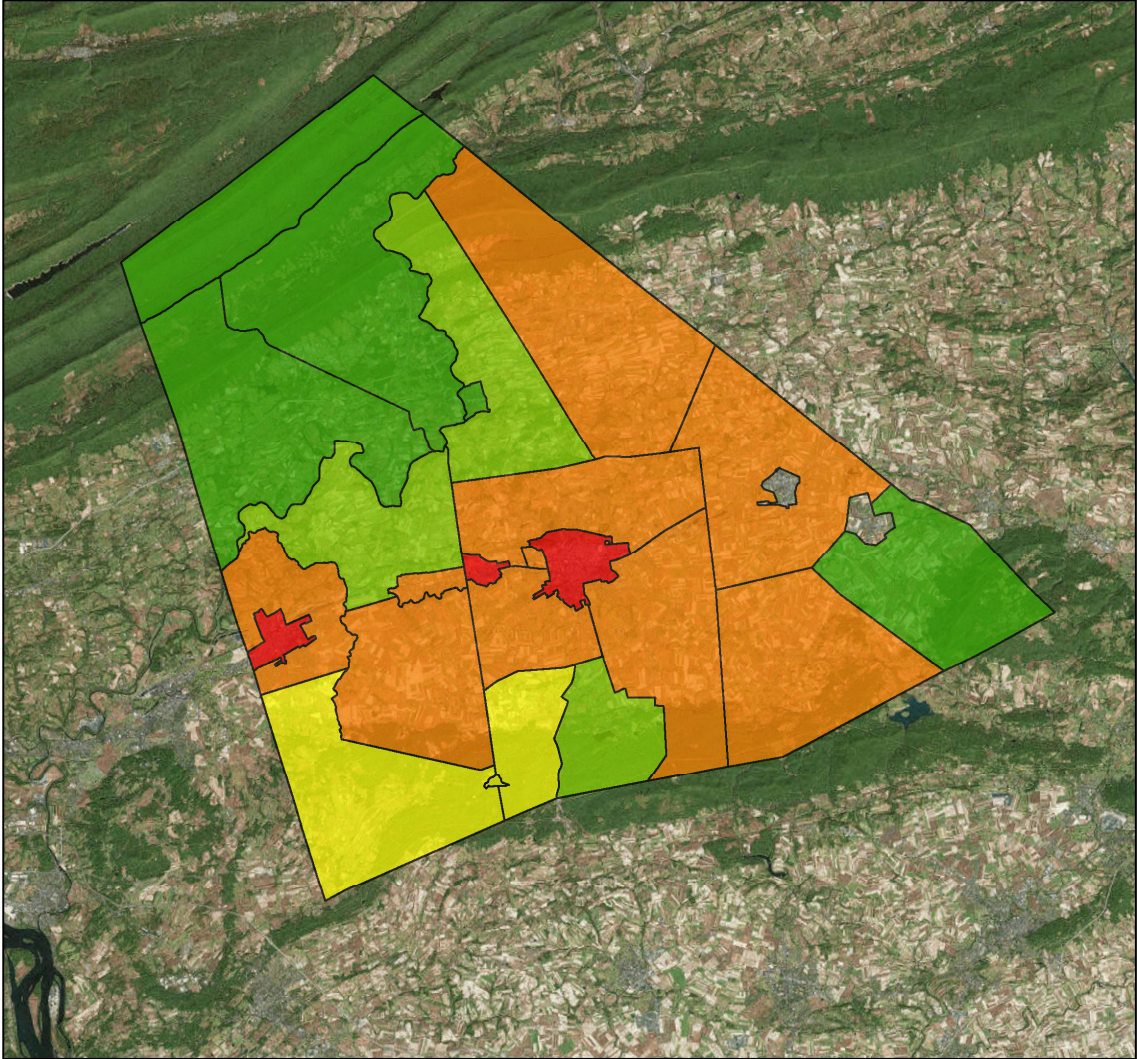
Municipal Separate Storm Sewer System (MS4) Regulated Municipality Summary

Totals by Municipalities

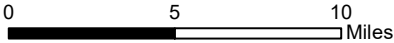


Averages for MS4 and Non-MS4 Municipalities

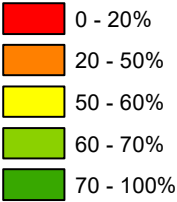
	Non-MS4	MS4
Conservation Opportunity Areas (Acres)	155	142
Restoration Opportunity Areas (Acres)	109	105
Developed Areas (Acres)	10	18
Total Buffer Acres	274	265
Percent Forest Buffer Coverage (%)	68.44	45.26



Lebanon County Municipalities

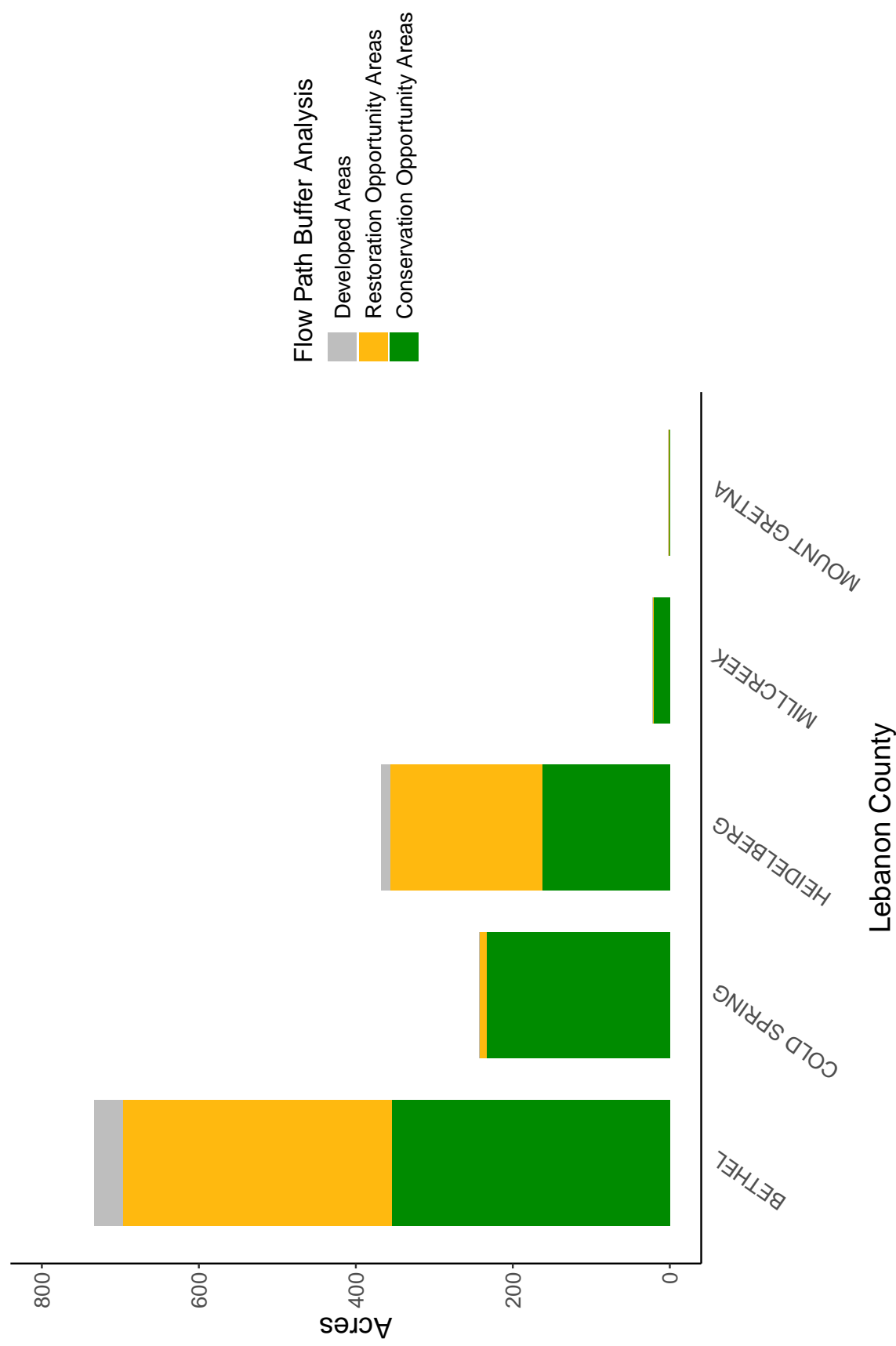


35' Buffer Coverage (%)



Municipality	MS4	Total 35 ft buffer acres	Conservation opportunity areas (acres)	Restoration opportunity areas (acres)	Developed areas (acres)	Percent forest buffer coverage (%)
BETHEL	0	734	354	343	36	48.27
COLD SPRING	0	243	234	9	0	96.41
HEIDELBERG	0	368	163	193	11	44.25
MILLCREEK	0	23	21	1	0	94.77
MOUNT GRETNA	0	2	1	1	0	58.49
ANNVILLE	1	54	24	16	14	44.11
CLEONA	1	19	3	8	8	16.62
CORNWALL	1	199	123	63	13	61.75
EAST HANOVER	1	752	533	189	30	70.87
JACKSON	1	104	43	56	4	41.69
JONESTOWN	1	14	11	2	0	79.66
LEBANON	1	125	25	30	71	19.72
NORTH ANNVILLE	1	402	262	129	11	65.03
NORTH CORNWALL	1	234	48	172	14	20.62
NORTH LEBANON	1	256	106	132	18	41.37
NORTH LONDONDERRY	1	243	107	113	23	43.98
PALMYRA	1	29	4	11	15	11.99
SOUTH ANNVILLE	1	403	86	304	13	21.30
SOUTH LEBANON	1	351	83	244	24	23.72
SOUTH LONDONDERRY	1	508	298	191	18	58.70
SWATARA	1	486	305	164	17	62.70
UNION	1	721	565	120	37	78.33
WEST CORNWALL	1	137	73	59	5	53.14
WEST LEBANON	1	4	2	1	1	44.73

Non-MS4 Regulated Municipalities



MS4 Regulated Municipalities

