

Montour County Forest Buffer Summary

35 ft. Width

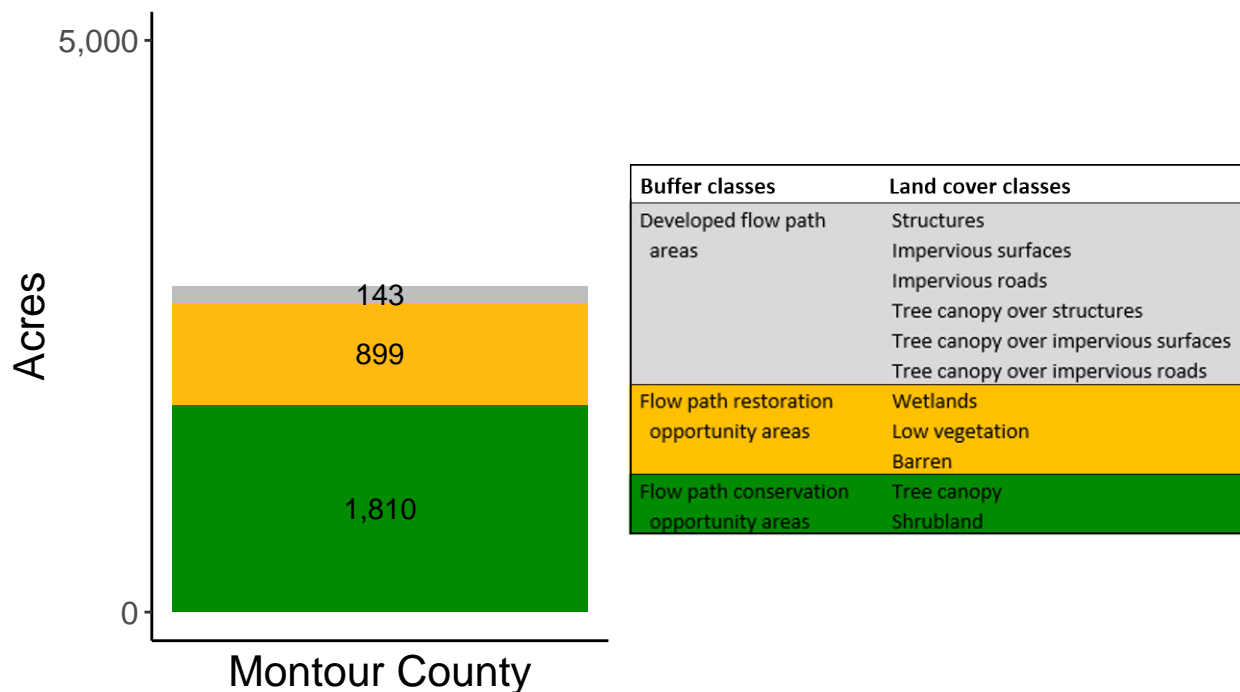
Created by: Chesapeake Conservancy, February 2019

Data Description

The buffer analysis is based on two Geospatial Information Systems (GIS) datasets created by Chesapeake Conservancy and partners. The enhanced flow path water network dataset was derived from 2006 & 2008 PAMAP Statewide digital elevation models (DEMs), developed from Lidar data. Channel heads were assigned where upslope drainage accumulation reached 60 acres. Flow paths were widened based on US Geological Survey regional curves and enhanced with high-resolution land cover. The high-resolution land cover dataset was derived from 2013 National Agriculture Inventory Program imagery. Both datasets have a spatial resolution of 1 meter. Pixels from the high-resolution land cover dataset within 35 ft. and 100 ft. distances of the enhanced flow path water network were considered in the buffer analysis. For more information and to download datasets, go to www.ChesapeakeConservancy.org and search for “data downloader.”

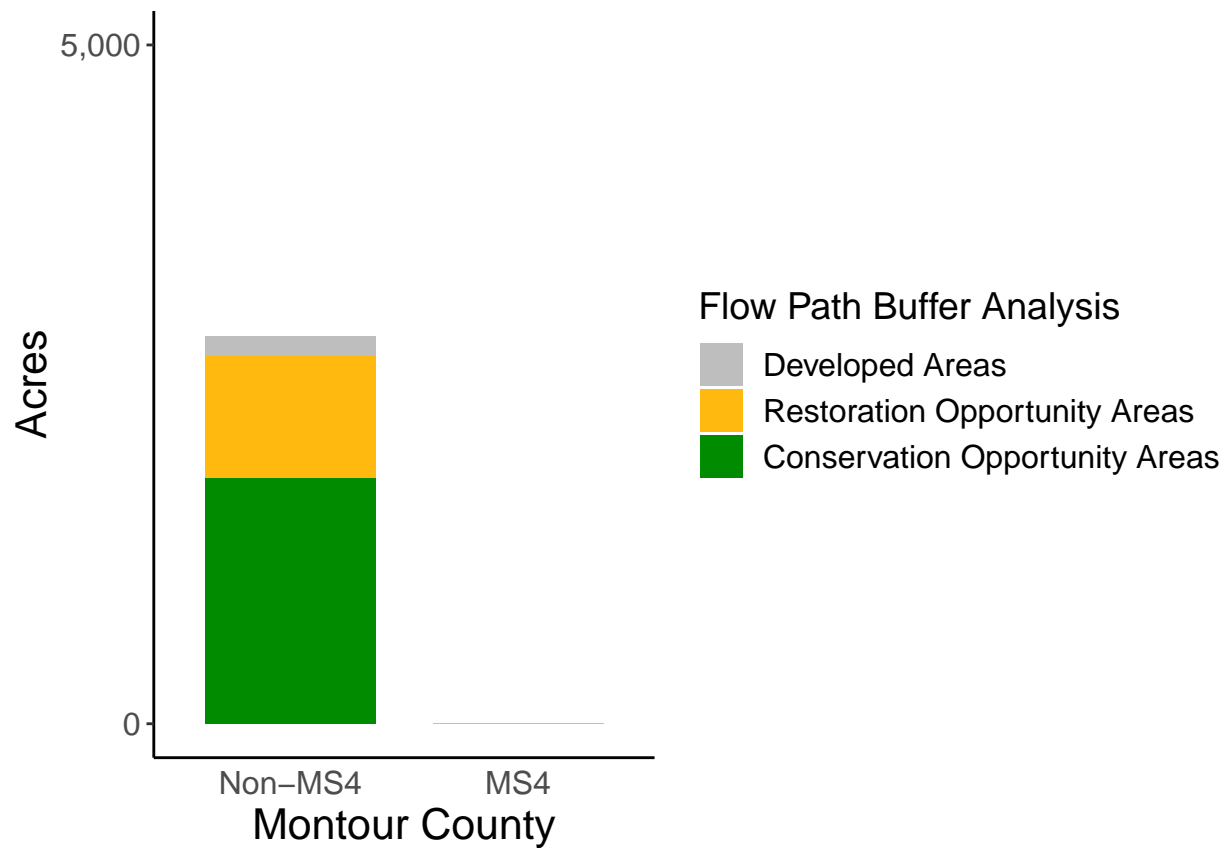
County Summary

Montour County contains a total of 899 acres of flow path restoration opportunity area, and has 63.48% forest buffer coverage. Montour County has complete buffer data coverage.



Municipal Separate Storm Sewer System (MS4) Regulated Municipality Summary

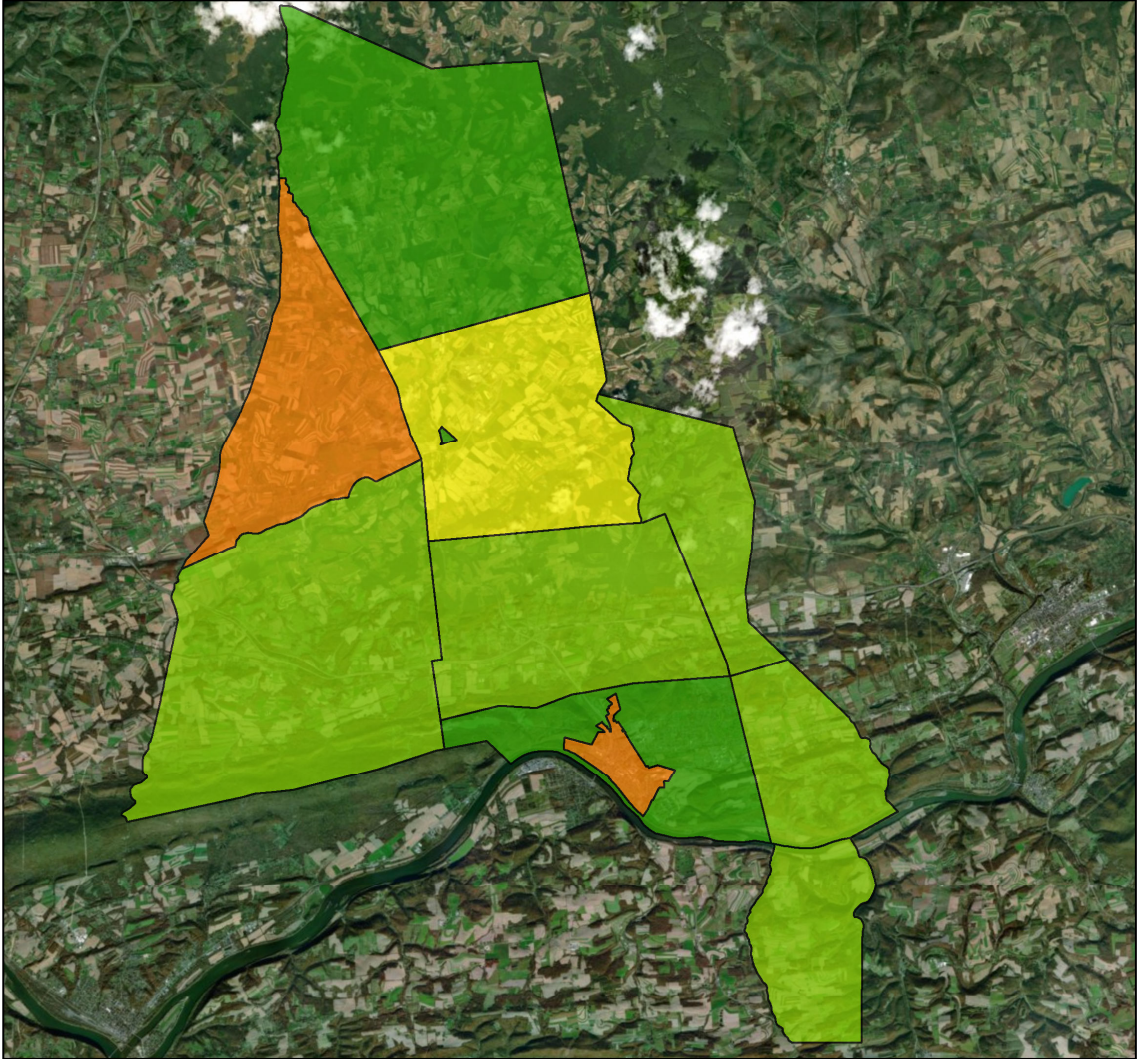
Totals by Municipalities



Montour County does not contain any MS4 Municipalities.

Averages for MS4 and Non-MS4 Municipalities

	Non-MS4	MS4
Conservation Opportunity Areas (Acres)	165	0
Restoration Opportunity Areas (Acres)	82	0
Developed Areas (Acres)	13	0
Total Buffer Acres	259	0
Percent Forest Buffer Coverage (%)	62.49	0.00



Montour County Municipalities

35' Buffer Coverage (%)

- 0 - 20%
- 20 - 50%
- 50 - 60%
- 60 - 70%
- 70 - 100%



Municipality	MS4	Total 35 ft buffer acres	Conservation opportunity areas (acres)	Restoration opportunity areas (acres)	Developed areas (acres)	Percent forest buffer coverage (%)
ANTHONY	0	538	405	122	11	75.25
COOPER	0	150	96	45	9	64.22
DANVILLE	0	54	22	19	13	40.17
DERRY	0	445	248	174	23	55.70
LIBERTY	0	565	390	156	20	68.94
LIMESTONE	0	245	57	178	10	23.24
MAHONING	0	219	158	43	17	72.29
MAYBERRY	0	129	86	40	3	66.76
VALLEY	0	365	255	83	28	69.67
WASHINGTONVILLE	0	1	1	0	0	85.02
WEST HEMLOCK	0	142	94	39	9	66.17

Non-MS4 Regulated Municipalities

