

Perry County Forest Buffer Summary

35 ft. Width

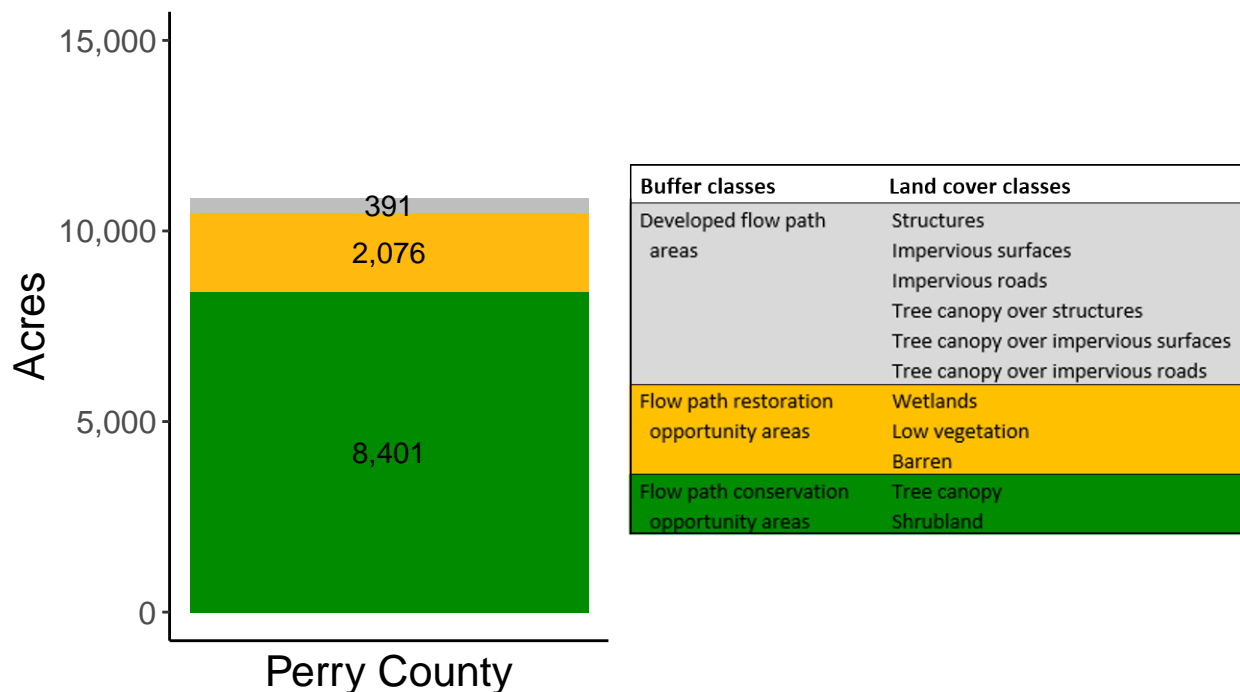
Created by: Chesapeake Conservancy, February 2019

Data Description

The buffer analysis is based on two Geospatial Information Systems (GIS) datasets created by Chesapeake Conservancy and partners. The enhanced flow path water network dataset was derived from 2006 & 2008 PAMAP Statewide digital elevation models (DEMs), developed from Lidar data. Channel heads were assigned where upslope drainage accumulation reached 60 acres. Flow paths were widened based on US Geological Survey regional curves and enhanced with high-resolution land cover. The high-resolution land cover dataset was derived from 2013 National Agriculture Inventory Program imagery. Both datasets have a spatial resolution of 1 meter. Pixels from the high-resolution land cover dataset within 35 ft. and 100 ft. distances of the enhanced flow path water network were considered in the buffer analysis. For more information and to download datasets, go to www.ChesapeakeConservancy.org and search for “data downloader.”

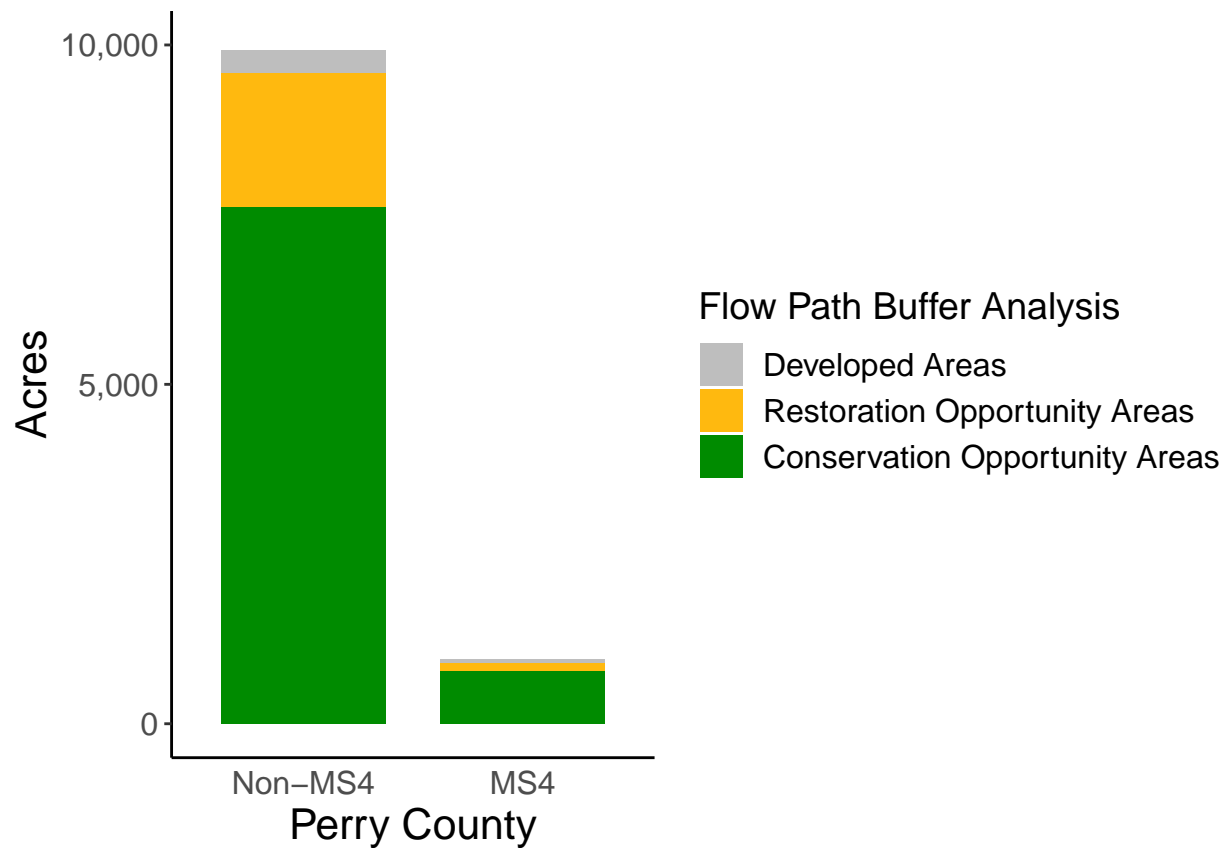
County Summary

Perry County contains a total of 2,076 acres of flow path restoration opportunity area, and has 77.3% forest buffer coverage. Perry County has complete buffer data coverage.



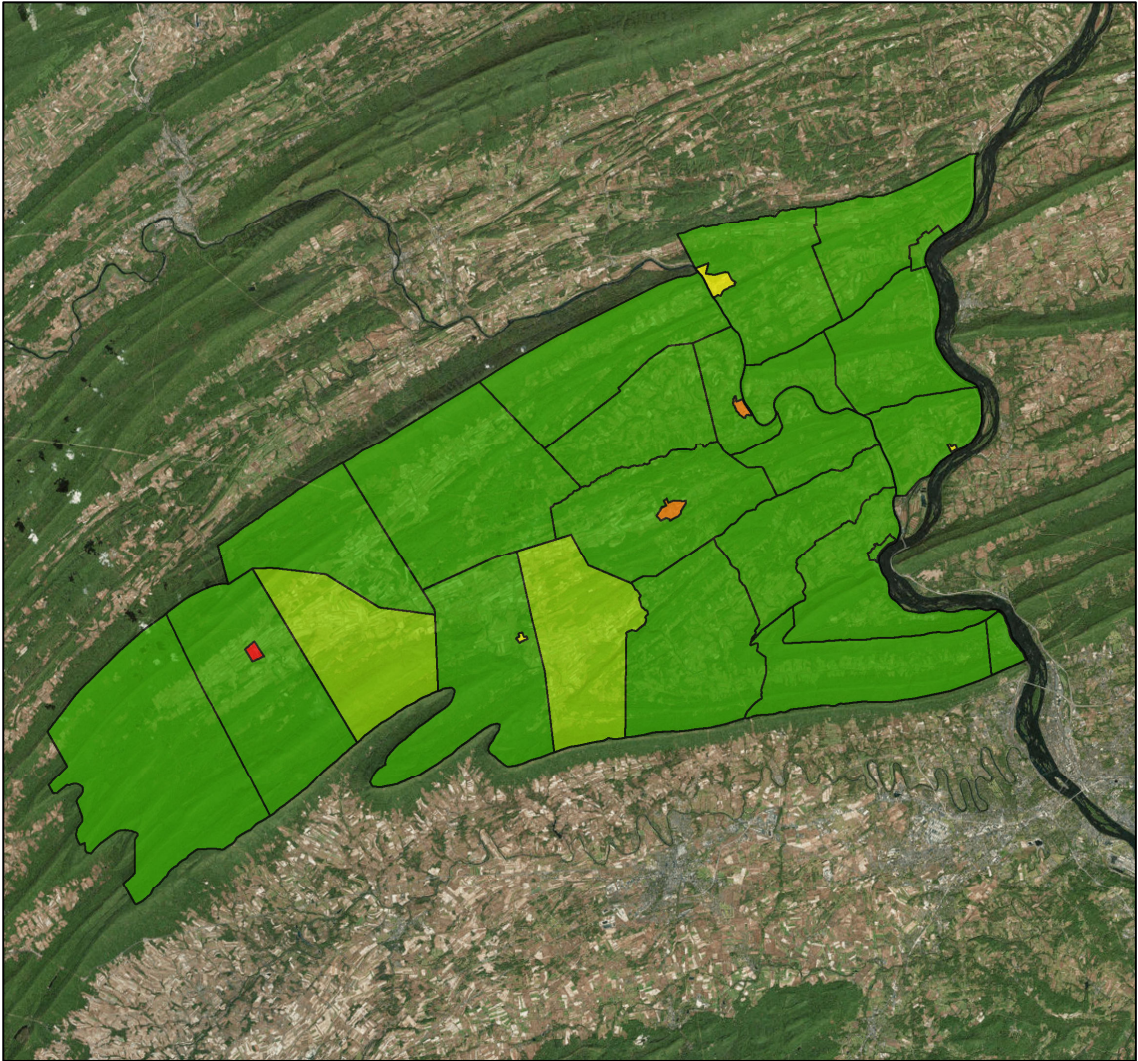
Municipal Separate Storm Sewer System (MS4) Regulated Municipality Summary

Totals by Municipalities

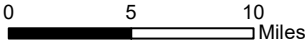


Averages for MS4 and Non-MS4 Municipalities

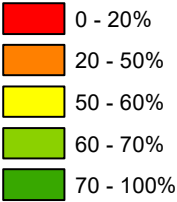
	Non-MS4	MS4
Conservation Opportunity Areas (Acres)	282	259
Restoration Opportunity Areas (Acres)	73	38
Developed Areas (Acres)	12	18
Total Buffer Acres	367	315
Percent Forest Buffer Coverage (%)	69.52	79.09



Perry County Municipalities

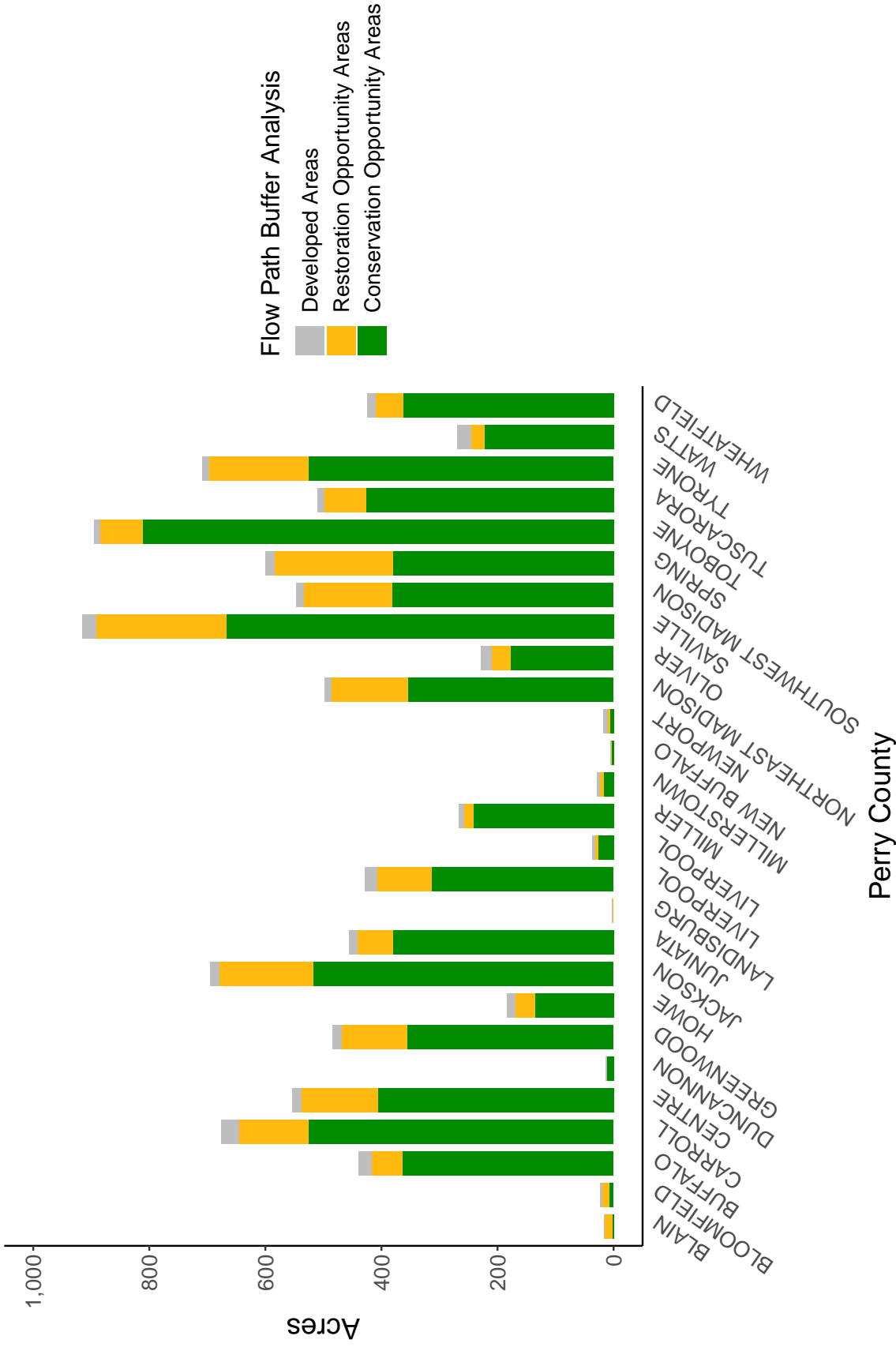


35' Buffer Coverage (%)



Municipality	MS4	Total 35 ft buffer acres	Conservation opportunity areas (acres)	Restoration opportunity areas (acres)	Developed areas (acres)	Percent forest buffer coverage (%)
BLAIN	0	17	2	13	1	14.57
BLOOMFIELD	0	23	8	11	4	34.82
BUFFALO	0	440	364	53	23	82.78
CARROLL	0	676	526	119	31	77.79
CENTRE	0	554	406	132	15	73.34
DUNCANNON	0	14	11	1	2	75.77
GREENWOOD	0	484	356	113	15	73.57
HOWE	0	184	135	34	14	73.67
JACKSON	0	695	518	162	15	74.49
JUNIATA	0	456	380	62	14	83.35
LANDISBURG	0	3	1	1	0	50.01
LIVERPOOL	0	428	314	94	21	73.27
LIVERPOOL	0	37	26	6	5	70.68
MILLER	0	267	241	17	9	90.29
MILLERSTOWN	0	28	17	6	5	59.68
NEW BUFFALO	0	6	3	1	1	56.20
NEWPORT	0	16	7	3	7	41.64
NORTHEAST MADISON	0	498	355	131	12	71.28
OLIVER	0	228	178	32	18	77.94
SAVILLE	0	914	667	224	24	72.89
SOUTHWEST MADISON	0	547	382	152	13	69.90
SPRING	0	599	380	204	15	63.38
TOBOYNE	0	895	811	74	10	90.61
TUSCARORA	0	511	426	73	12	83.35
TYRONE	0	709	526	171	11	74.25
WATTS	0	270	222	24	24	82.01
WHEATFIELD	0	424	362	48	14	85.46
MARYSVILLE	1	55	39	7	9	71.67
PENN	1	446	364	47	35	81.63
RYE	1	445	374	60	11	83.97

Non-MS4 Regulated Municipalities



MS4 Regulated Municipalities

