

Potter County Forest Buffer Summary

35 ft. Width

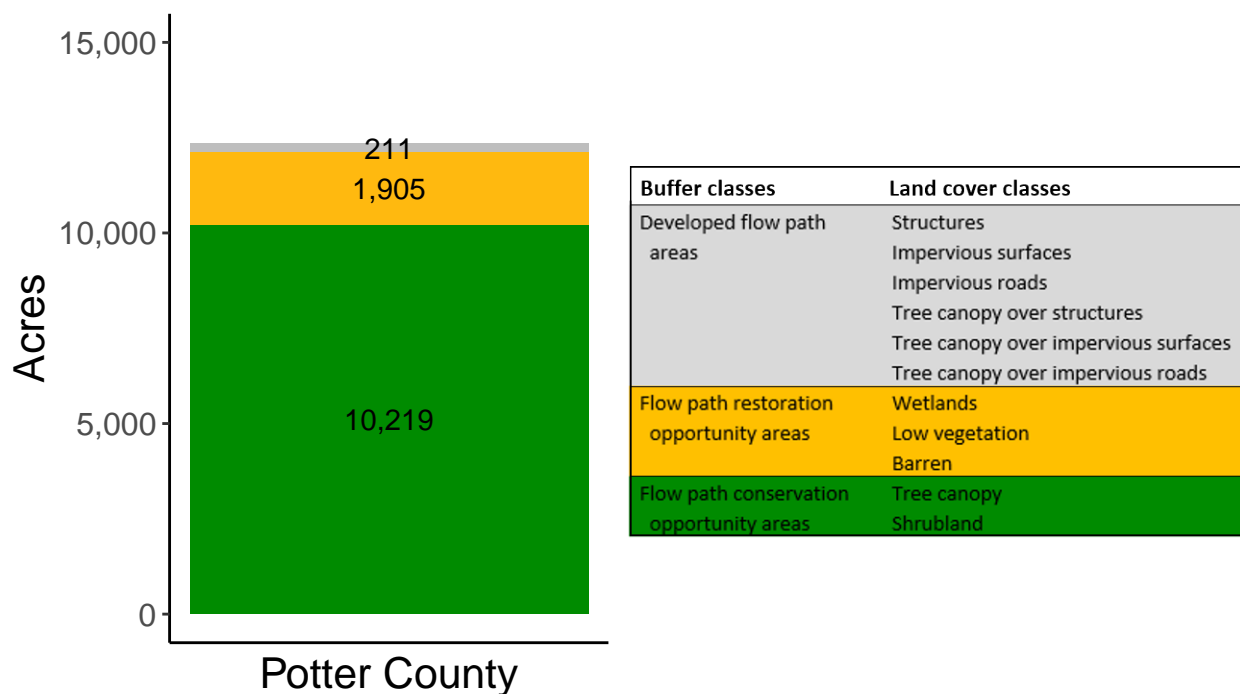
Created by: Chesapeake Conservancy, February 2019

Data Description

The buffer analysis is based on two Geospatial Information Systems (GIS) datasets created by Chesapeake Conservancy and partners. The enhanced flow path water network dataset was derived from 2006 & 2008 PAMAP Statewide digital elevation models (DEMs), developed from Lidar data. Channel heads were assigned where upslope drainage accumulation reached 60 acres. Flow paths were widened based on US Geological Survey regional curves and enhanced with high-resolution land cover. The high-resolution land cover dataset was derived from 2013 National Agriculture Inventory Program imagery. Both datasets have a spatial resolution of 1 meter. Pixels from the high-resolution land cover dataset within 35 ft. and 100 ft. distances of the enhanced flow path water network were considered in the buffer analysis. For more information and to download datasets, go to www.ChesapeakeConservancy.org and search for “data downloader.”

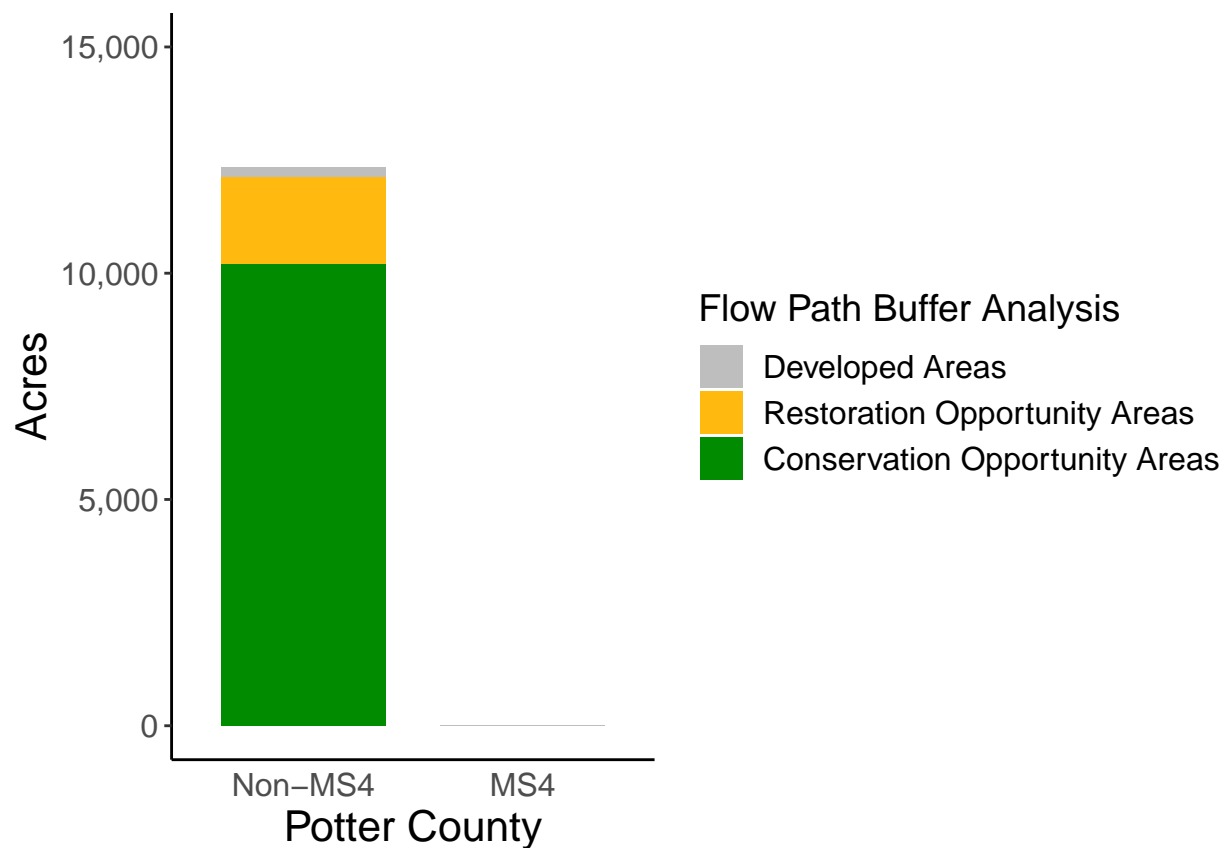
County Summary

Potter County contains a total of 1,905 acres of flow path restoration opportunity area, and has 82.85% forest buffer coverage. Potter County has incomplete buffer data coverage.



Municipal Separate Storm Sewer System (MS4) Regulated Municipality Summary

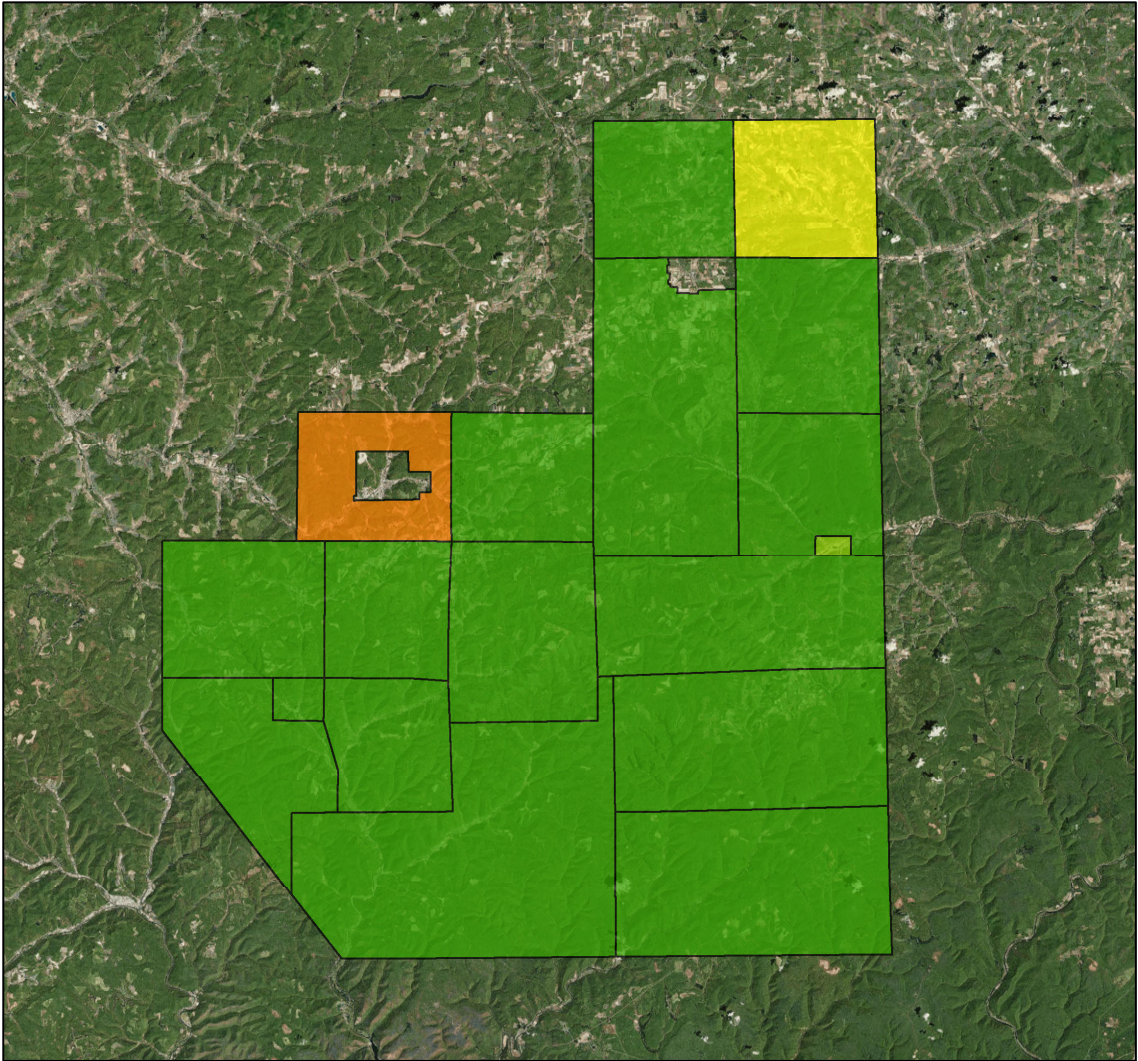
Totals by Municipalities



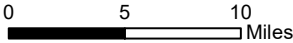
Potter County does not contain any MS4 Municipalities.

Averages for MS4 and Non-MS4 Municipalities

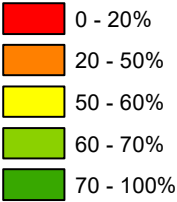
	Non-MS4	MS4
Conservation Opportunity Areas (Acres)	568	0
Restoration Opportunity Areas (Acres)	106	0
Developed Areas (Acres)	12	0
Total Buffer Acres	685	0
Percent Forest Buffer Coverage (%)	76.78	0.00



Potter County Municipalities



35' Buffer Coverage (%)



Municipality	MS4	Total 35 ft buffer acres	Conservation opportunity areas (acres)	Restoration opportunity areas (acres)	Developed areas (acres)	Percent forest buffer coverage (%)
ABBOTT	0	1,278	1,081	183	15	84.58
AUSTIN	0	78	55	16	7	70.35
BINGHAM	0	45	34	11	0	74.64
EULALIA	0	24	10	14	0	39.42
GALETON	0	38	23	11	4	61.32
HARRISON	0	641	381	244	16	59.47
HECTOR	0	702	551	139	12	78.49
HOMER	0	540	431	102	7	79.87
KEATING	0	451	333	103	15	73.82
PIKE	0	711	598	97	16	84.04
PORTAGE	0	682	605	67	11	88.69
STEWARDSOON	0	1,325	1,190	126	9	89.81
SUMMIT	0	762	624	127	11	81.94
SWEDEN	0	136	107	23	6	78.84
SYLVANIA	0	599	488	104	7	81.44
ULYSSES	0	1,133	954	150	29	84.18
WEST BRANCH	0	1,114	922	175	17	82.75
WHARTON	0	2,075	1,833	214	28	88.32

Non-MS4 Regulated Municipalities

