

Schuykill County Forest Buffer Summary

35 ft. Width

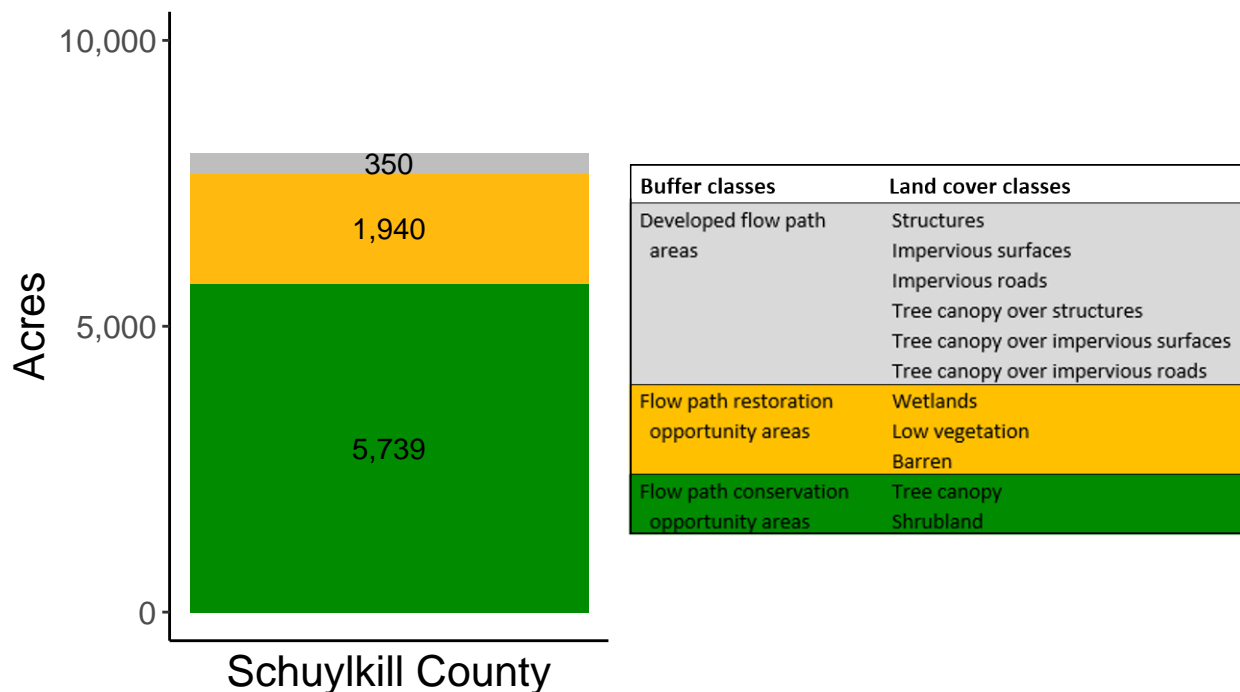
Created by: Chesapeake Conservancy, February 2019

Data Description

The buffer analysis is based on two Geospatial Information Systems (GIS) datasets created by Chesapeake Conservancy and partners. The enhanced flow path water network dataset was derived from 2006 & 2008 PAMAP Statewide digital elevation models (DEMs), developed from Lidar data. Channel heads were assigned where upslope drainage accumulation reached 60 acres. Flow paths were widened based on US Geological Survey regional curves and enhanced with high-resolution land cover. The high-resolution land cover dataset was derived from 2013 National Agriculture Inventory Program imagery. Both datasets have a spatial resolution of 1 meter. Pixels from the high-resolution land cover dataset within 35 ft. and 100 ft. distances of the enhanced flow path water network were considered in the buffer analysis. For more information and to download datasets, go to www.ChesapeakeConservancy.org and search for “data downloader.”

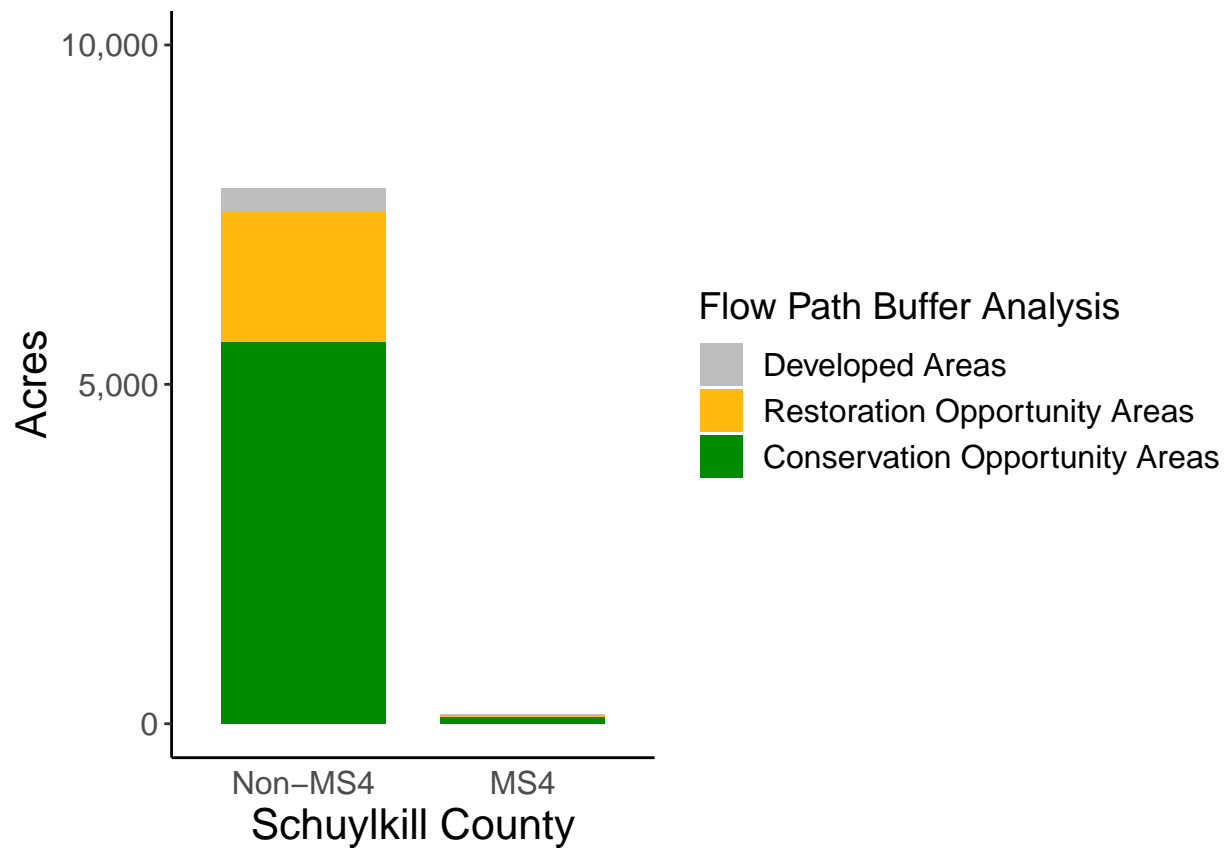
County Summary

Schuykill County contains a total of 1,940 acres of flow path restoration opportunity area, and has 71.48% forest buffer coverage. Schuykill County has incomplete buffer data coverage.



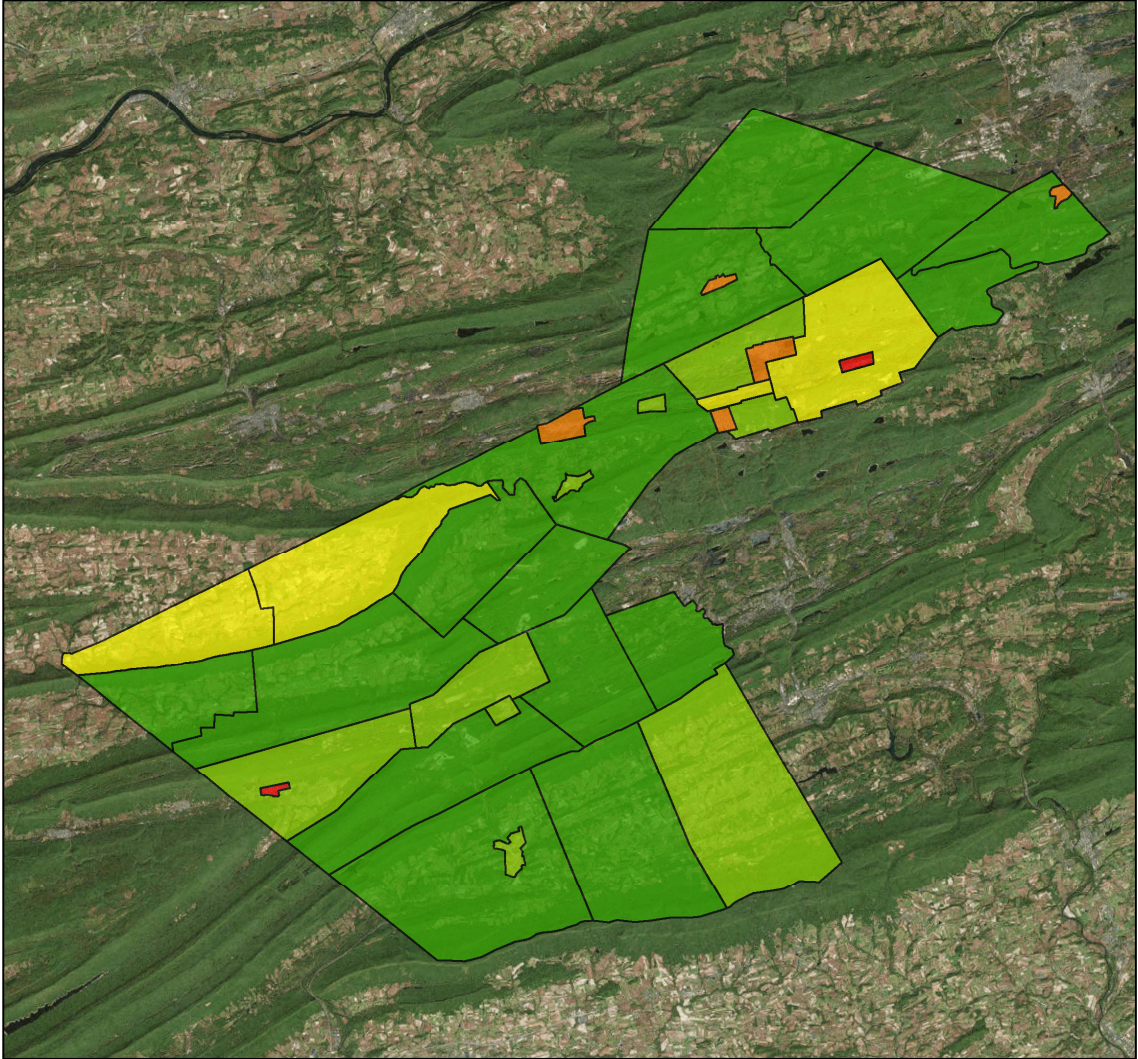
Municipal Separate Storm Sewer System (MS4) Regulated Municipality Summary

Totals by Municipalities

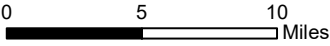


Averages for MS4 and Non-MS4 Municipalities

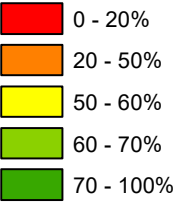
	Non-MS4	MS4
Conservation Opportunity Areas (Acres)	176	52
Restoration Opportunity Areas (Acres)	60	18
Developed Areas (Acres)	11	4
Total Buffer Acres	246	73
Percent Forest Buffer Coverage (%)	64.41	48.96



Schuylkill County Municipalities

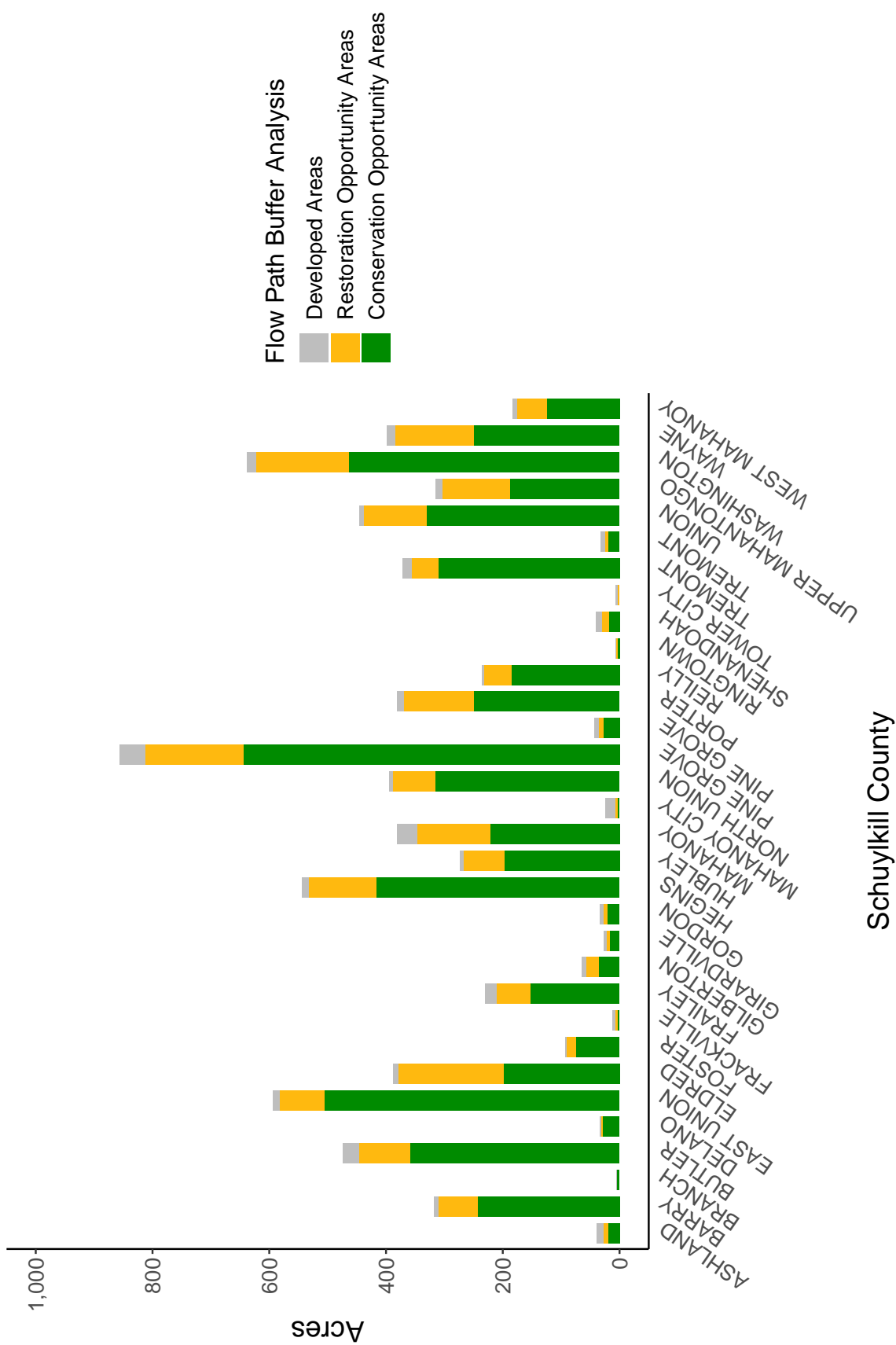


35' Buffer Coverage (%)



Municipality	MS4	Total 35 ft buffer acres	Conservation opportunity areas (acres)	Restoration opportunity areas (acres)	Developed areas (acres)	Percent forest buffer coverage (%)
ASHLAND	0	40	19	9	12	47.75
BARRY	0	317	244	66	8	76.91
BRANCH	0	5	5	0	0	100.00
BUTLER	0	474	359	88	27	75.68
DELANO	0	35	29	3	2	84.03
EAST UNION	0	594	506	77	11	85.23
ELDRED	0	387	198	181	9	51.05
FOSTER	0	93	74	17	2	79.12
FRACKVILLE	0	12	4	3	5	37.38
FRAILEY	0	230	152	59	19	66.31
GILBERTON	0	64	36	22	7	55.49
GIRARDVILLE	0	28	17	5	5	62.61
GORDON	0	32	21	6	6	63.23
HEGINS	0	544	417	116	11	76.64
HUBLEY	0	274	198	69	6	72.43
MAHANAY	0	381	221	126	34	57.86
MAHANAY CITY	0	24	4	3	17	17.01
NORTH UNION	0	396	315	74	6	79.59
PINE GROVE	0	855	645	167	44	75.42
PINE GROVE	0	44	27	9	7	62.09
PORTER	0	381	250	120	11	65.50
REILLY	0	235	186	46	4	79.02
RINGTOWN	0	6	3	3	0	43.90
SHENANDOAH	0	40	19	11	10	47.77
TOWER CITY	0	5	1	2	3	16.82
TREMONT	0	371	310	46	15	83.43
TREMONT	0	32	20	5	7	62.12
UNION	0	445	331	107	8	74.26
UPPER MAHANTONGO	0	315	187	117	11	59.50
WASHINGTON	0	638	464	159	16	72.69
WAYNE	0	399	250	135	14	62.68
WEST MAHANAY	0	183	124	52	7	67.60
KLINE	1	138	101	34	3	73.41
MCADOO	1	9	2	2	5	24.51

Non-MS4 Regulated Municipalities



MS4 Regulated Municipalities

