

Snyder County Forest Buffer Summary

35 ft. Width

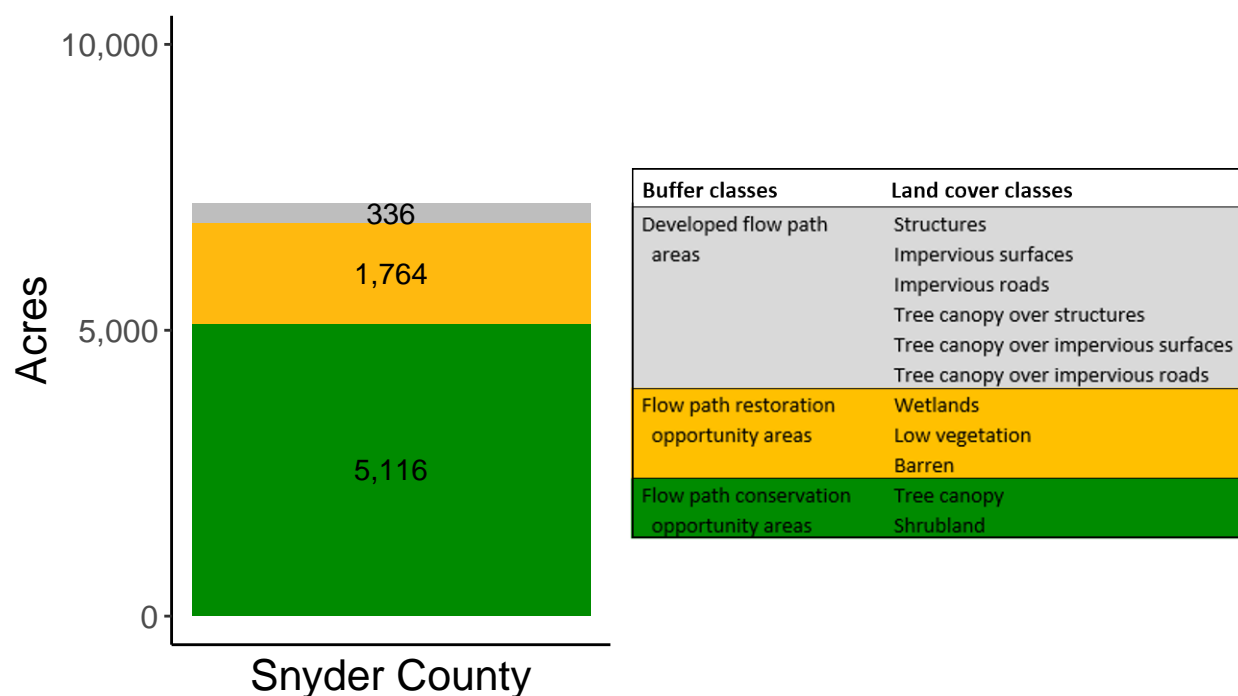
Created by: Chesapeake Conservancy, February 2019

Data Description

The buffer analysis is based on two Geospatial Information Systems (GIS) datasets created by Chesapeake Conservancy and partners. The enhanced flow path water network dataset was derived from 2006 & 2008 PAMAP Statewide digital elevation models (DEMs), developed from Lidar data. Channel heads were assigned where upslope drainage accumulation reached 60 acres. Flow paths were widened based on US Geological Survey regional curves and enhanced with high-resolution land cover. The high-resolution land cover dataset was derived from 2013 National Agriculture Inventory Program imagery. Both datasets have a spatial resolution of 1 meter. Pixels from the high-resolution land cover dataset within 35 ft. and 100 ft. distances of the enhanced flow path water network were considered in the buffer analysis. For more information and to download datasets, go to www.ChesapeakeConservancy.org and search for “data downloader.”

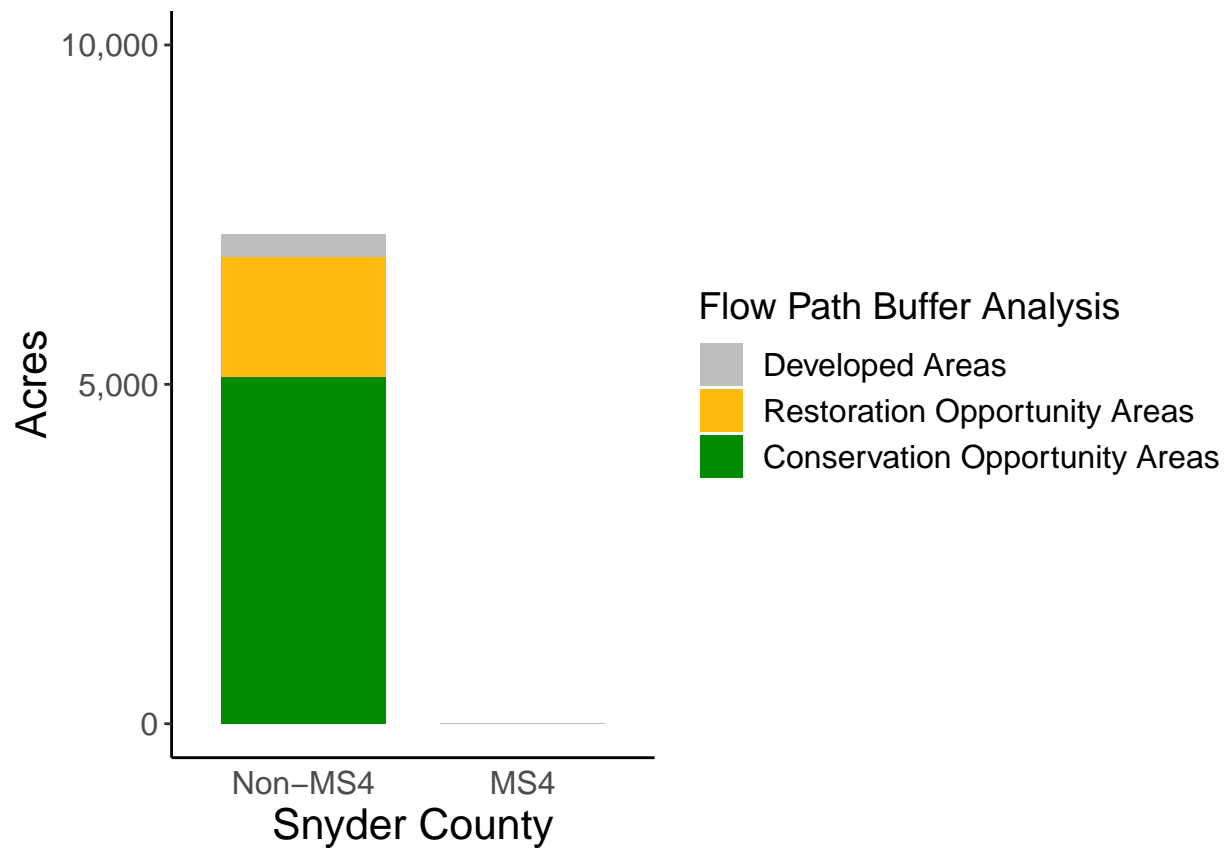
County Summary

Snyder County contains a total of 1,764 acres of flow path restoration opportunity area, and has 70.9% forest buffer coverage. Snyder County has complete buffer data coverage.



Municipal Separate Storm Sewer System (MS4) Regulated Municipality Summary

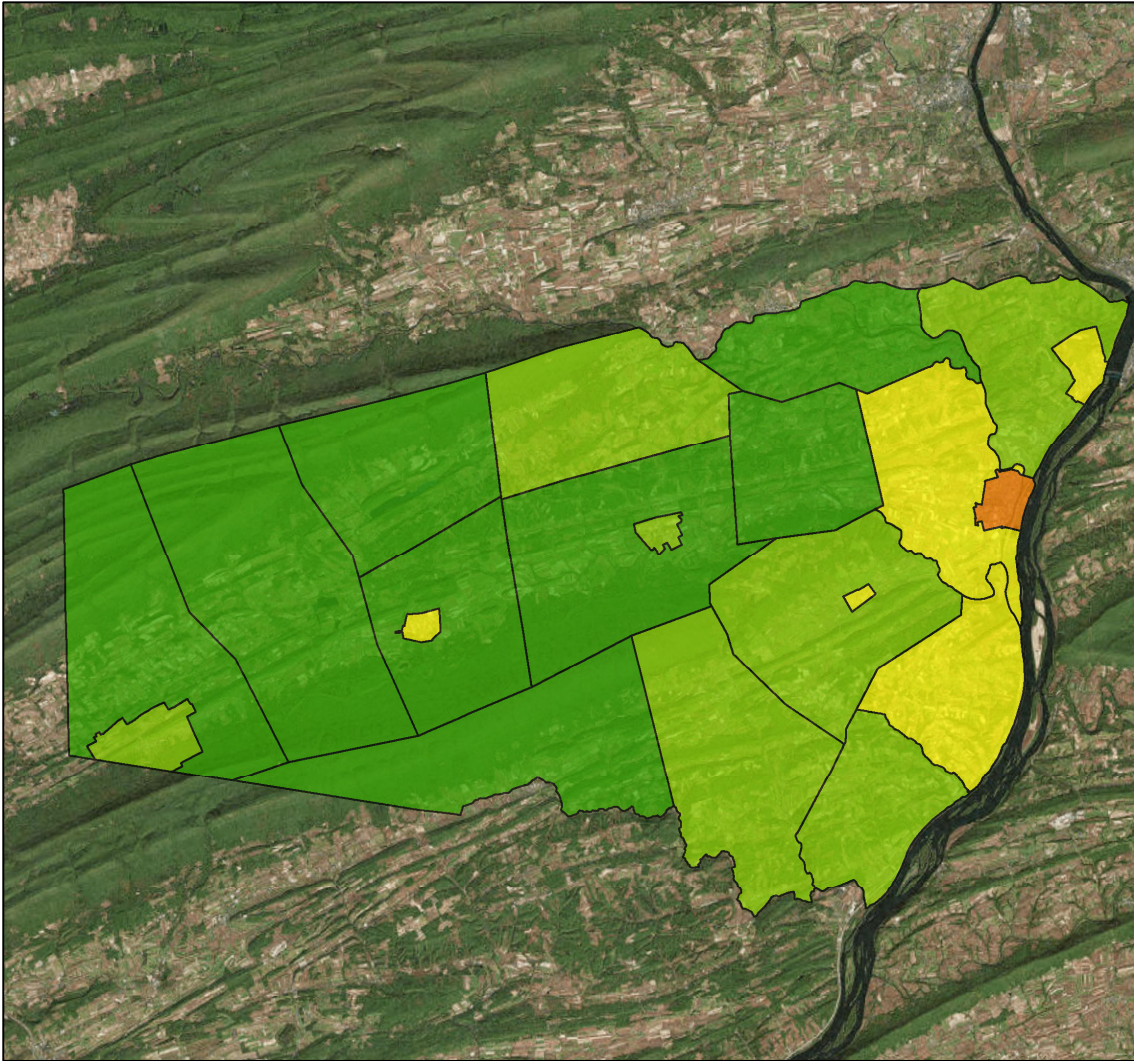
Totals by Municipalities



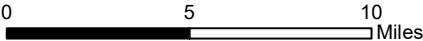
Snyder County does not contain any MS4 Municipalities.

Averages for MS4 and Non-MS4 Municipalities

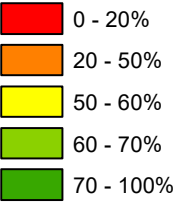
	Non-MS4	MS4
Conservation Opportunity Areas (Acres)	244	0
Restoration Opportunity Areas (Acres)	84	0
Developed Areas (Acres)	16	0
Total Buffer Acres	344	0
Percent Forest Buffer Coverage (%)	65.90	0.00



Snyder County Municipalities



35' Buffer Coverage (%)



Municipality	MS4	Total 35 ft buffer acres	Conservation opportunity areas (acres)	Restoration opportunity areas (acres)	Developed areas (acres)	Percent forest buffer coverage (%)
ADAMS	0	433	324	96	12	75.02
BEAVER	0	488	379	99	11	77.51
BEAVERTOWN	0	20	11	6	2	56.98
CENTER	0	410	282	114	14	68.77
CHAPMAN	0	287	173	96	18	60.38
FRANKLIN	0	641	490	122	28	76.54
FREEBURG	0	13	7	5	1	52.44
JACKSON	0	326	233	83	10	71.50
MCCLURE	0	95	66	23	6	69.23
MIDDLEBURG	0	31	20	7	4	64.95
MIDDLECREEK	0	333	236	78	18	70.92
MONROE	0	360	228	92	39	63.52
PENN	0	389	217	150	22	55.76
PERRY	0	537	363	153	22	67.51
SELINGSGROVE	0	60	27	19	15	44.34
SHAMOKIN DAM	0	63	32	14	17	50.41
SPRING	0	863	712	129	22	82.54
UNION	0	301	171	100	31	56.58
WASHINGTON	0	492	324	152	16	65.81
WEST BEAVER	0	518	412	95	11	79.55
WEST PERRY	0	555	409	129	18	73.60

*

Non-MS4 Regulated Municipalities

