

Susquehanna County Forest Buffer Summary

35 ft. Width

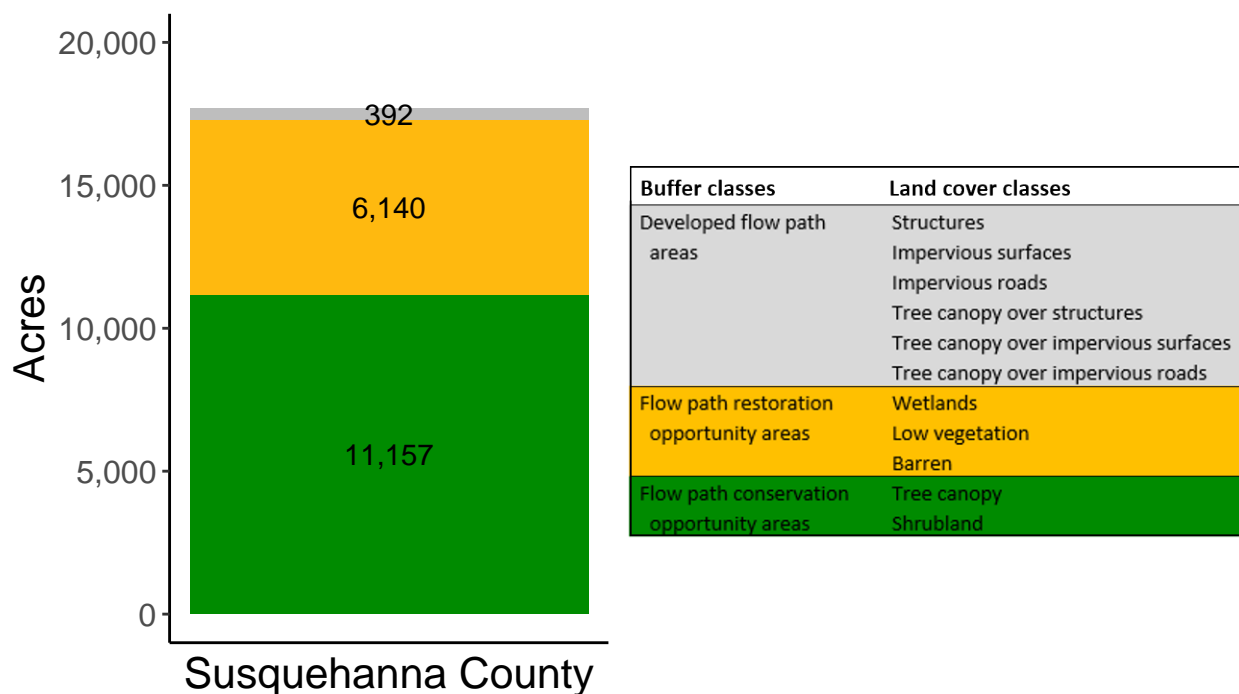
Created by: Chesapeake Conservancy, February 2019

Data Description

The buffer analysis is based on two Geospatial Information Systems (GIS) datasets created by Chesapeake Conservancy and partners. The enhanced flow path water network dataset was derived from 2006 & 2008 PAMAP Statewide digital elevation models (DEMs), developed from Lidar data. Channel heads were assigned where upslope drainage accumulation reached 60 acres. Flow paths were widened based on US Geological Survey regional curves and enhanced with high-resolution land cover. The high-resolution land cover dataset was derived from 2013 National Agriculture Inventory Program imagery. Both datasets have a spatial resolution of 1 meter. Pixels from the high-resolution land cover dataset within 35 ft. and 100 ft. distances of the enhanced flow path water network were considered in the buffer analysis. For more information and to download datasets, go to www.ChesapeakeConservancy.org and search for “data downloader.”

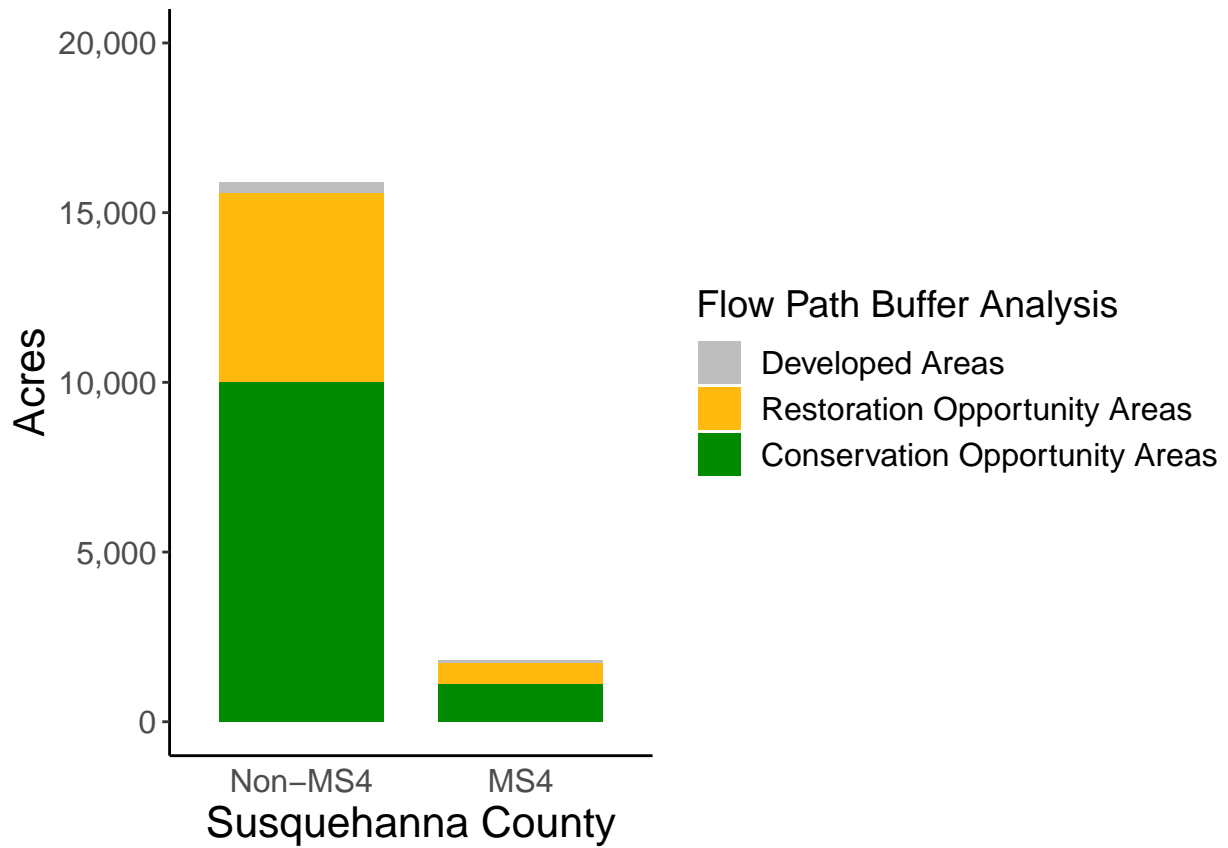
County Summary

Susquehanna County contains a total of 6,140 acres of flow path restoration opportunity area, and has 63.07% forest buffer coverage. Susquehanna County has complete buffer data coverage.



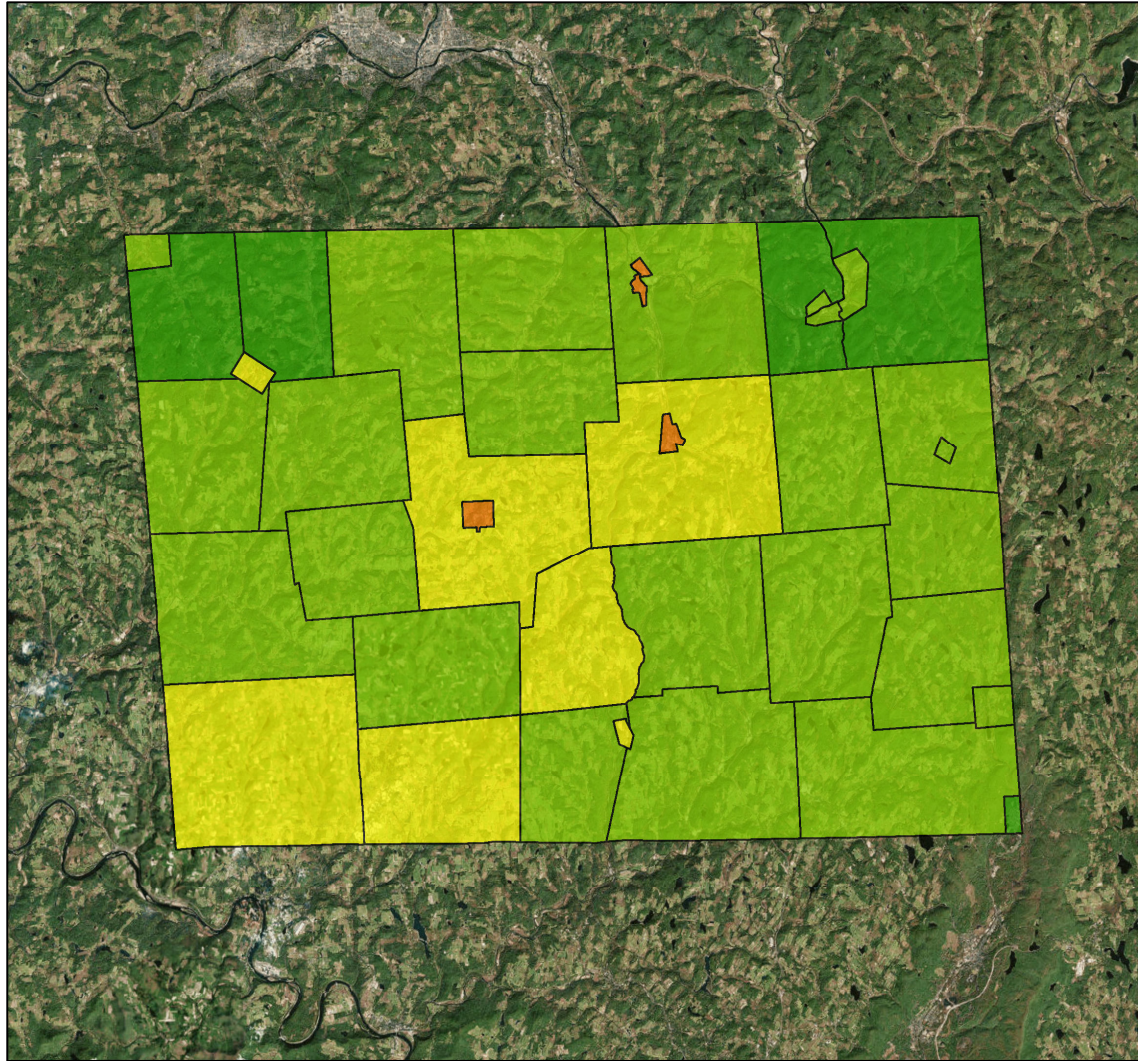
Municipal Separate Storm Sewer System (MS4) Regulated Municipality Summary

Totals by Municipalities



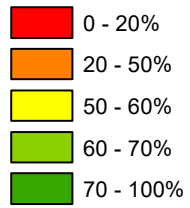
Averages for MS4 and Non-MS4 Municipalities

	Non-MS4	MS4
Conservation Opportunity Areas (Acres)	295	189
Restoration Opportunity Areas (Acres)	163	99
Developed Areas (Acres)	9	13
Total Buffer Acres	467	301
Percent Forest Buffer Coverage (%)	62.89	57.01



Susquehanna County Municipalities 0 5 10 Miles

35' Buffer Coverage (%)

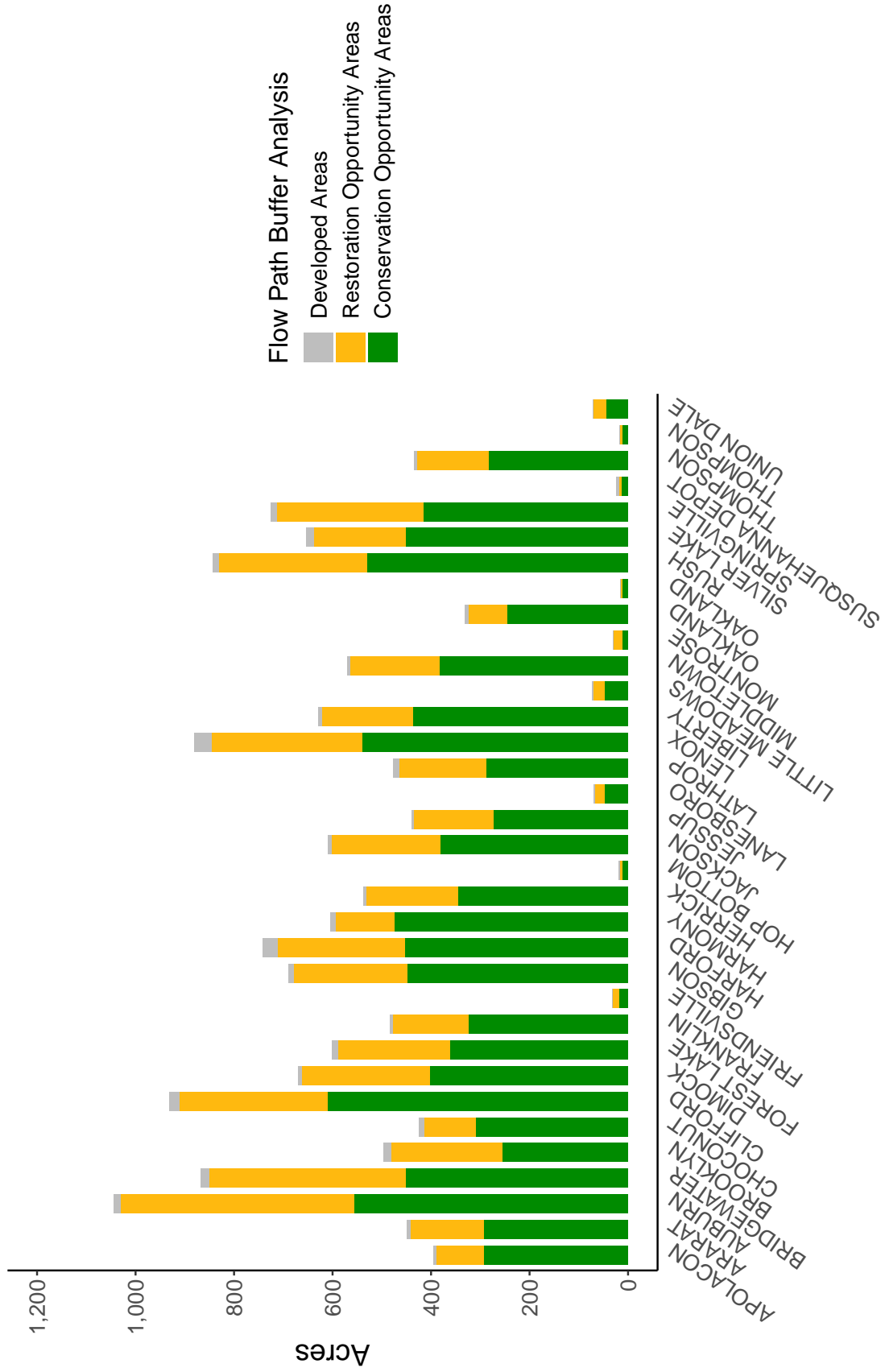


Municipality	MS4	Total 35 ft buffer acres	Conservation opportunity areas (acres)	Restoration opportunity areas (acres)	Developed areas (acres)	Percent forest buffer coverage (%)
APOLOCON	0	394	292	98	5	74.00
ARARAT	0	449	293	149	7	65.15
AUBURN	0	1,044	556	474	14	53.23
BRIDGEWATER	0	867	452	399	17	52.13
BROOKLYN	0	495	256	225	15	51.61
CHOCONUT	0	425	310	105	10	73.02
CLIFFORD	0	932	611	300	21	65.56
DIMOCK	0	670	403	259	8	60.21
FOREST LAKE	0	600	361	228	12	60.06
FRANKLIN	0	485	323	155	6	66.70
FRIENDSVILLE	0	32	18	14	0	55.59
GIBSON	0	689	448	230	11	65.03
HARFORD	0	742	452	260	31	60.88
HARMONY	0	604	474	119	11	78.51
HERRICK	0	538	345	187	6	64.12
HOP BOTTOM	0	21	11	6	3	53.14
JACKSON	0	610	381	221	8	62.51
JESSUP	0	440	273	163	4	62.07
LANESBORO	0	70	48	19	3	68.71
LATHROP	0	477	288	177	13	60.25
LENOX	0	880	539	307	35	61.20
LIBERTY	0	629	437	185	7	69.43
LITTLE MEADOWS	0	74	48	23	3	65.02
MIDDLETOWN	0	569	384	180	5	67.55
MONTROSE	0	30	12	17	1	39.75
OAKLAND	0	332	246	79	7	74.10
OAKLAND	0	16	11	4	1	64.69
RUSH	0	843	530	300	13	62.88
SILVER LAKE	0	653	451	187	15	69.08
SPRINGVILLE	0	726	415	298	12	57.24
SUSQUEHANNA DEPOT	0	23	14	4	5	62.46
THOMPSON	0	434	284	144	6	65.39
THOMPSON	0	18	12	5	1	65.84
UNION DALE	0	73	44	27	1	61.20
FOREST CITY	1	17	13	4	1	75.03

(continued)

Municipality	MS4	Total 35 ft. buffer acres	Conservation opportunity areas (acres)	Restoration opportunity areas (acres)	Developed areas (acres)	Percent forest buffer coverage (%)
GREAT BEND	1	825	565	228	32	68.50
GREAT BEND	1	5	2	3	0	45.44
HALLSTEAD	1	19	9	6	4	49.64
NEW MILFORD	1	882	521	331	30	59.07
NEW MILFORD	1	56	25	22	9	44.39

Non-MS4 Regulated Municipalities



Susquehanna County

MS4 Regulated Municipalities

