

Tioga County Forest Buffer Summary

35 ft. Width

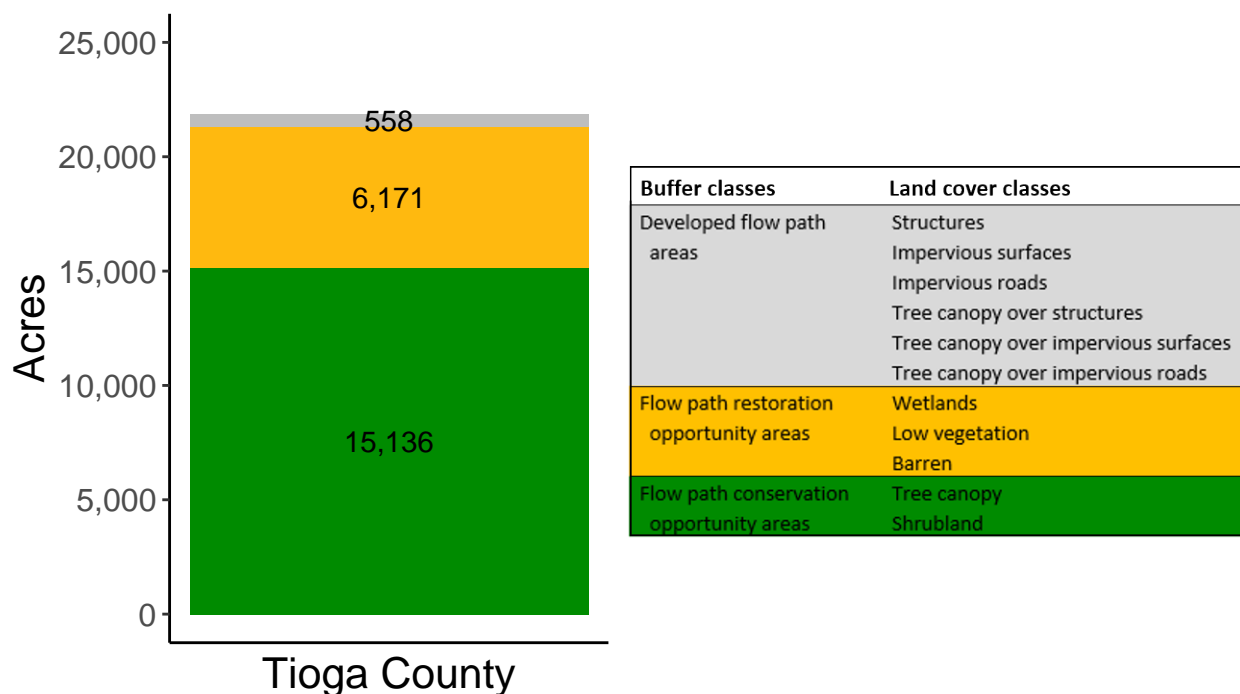
Created by: Chesapeake Conservancy, February 2019

Data Description

The buffer analysis is based on two Geospatial Information Systems (GIS) datasets created by Chesapeake Conservancy and partners. The enhanced flow path water network dataset was derived from 2006 & 2008 PAMAP Statewide digital elevation models (DEMs), developed from Lidar data. Channel heads were assigned where upslope drainage accumulation reached 60 acres. Flow paths were widened based on US Geological Survey regional curves and enhanced with high-resolution land cover. The high-resolution land cover dataset was derived from 2013 National Agriculture Inventory Program imagery. Both datasets have a spatial resolution of 1 meter. Pixels from the high-resolution land cover dataset within 35 ft. and 100 ft. distances of the enhanced flow path water network were considered in the buffer analysis. For more information and to download datasets, go to www.ChesapeakeConservancy.org and search for “data downloader.”

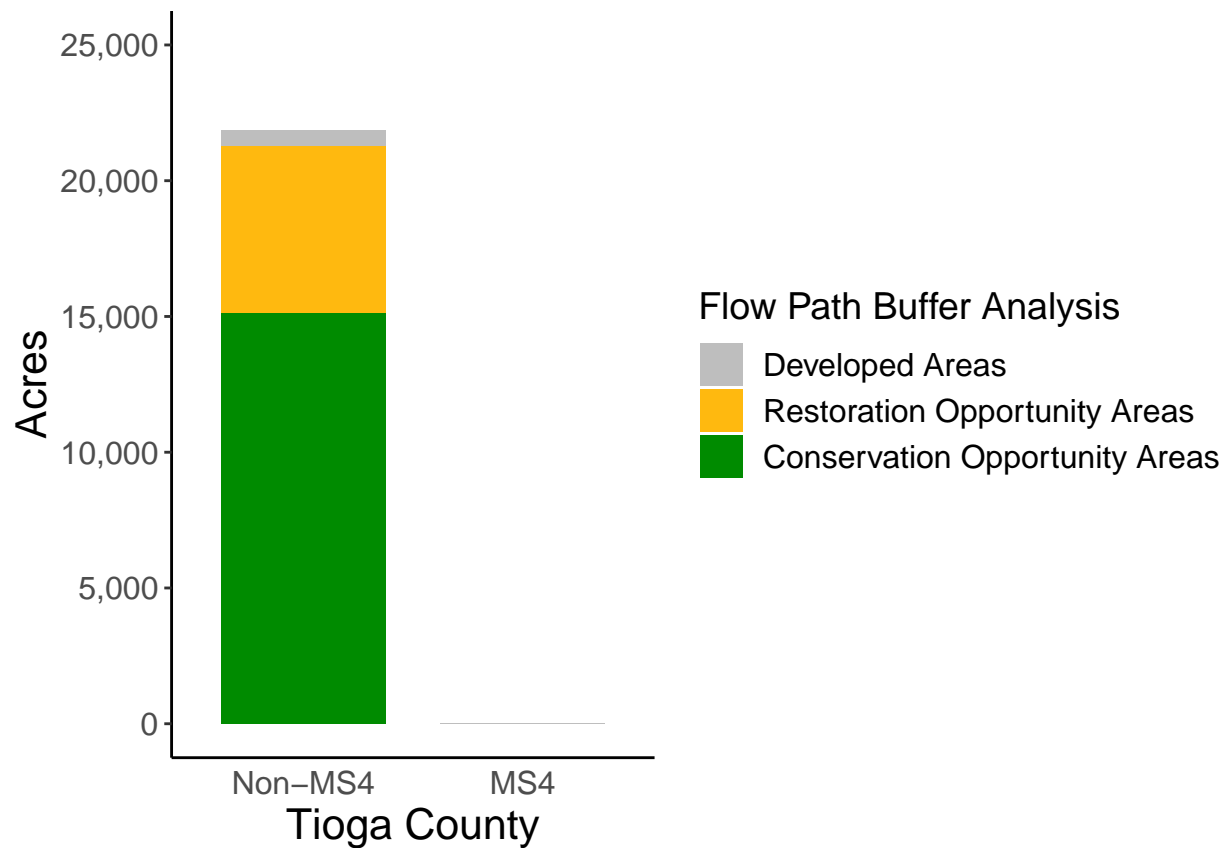
County Summary

Tioga County contains a total of 6,171 acres of flow path restoration opportunity area, and has 69.22% forest buffer coverage. Tioga County has complete buffer data coverage.



Municipal Separate Storm Sewer System (MS4) Regulated Municipality Summary

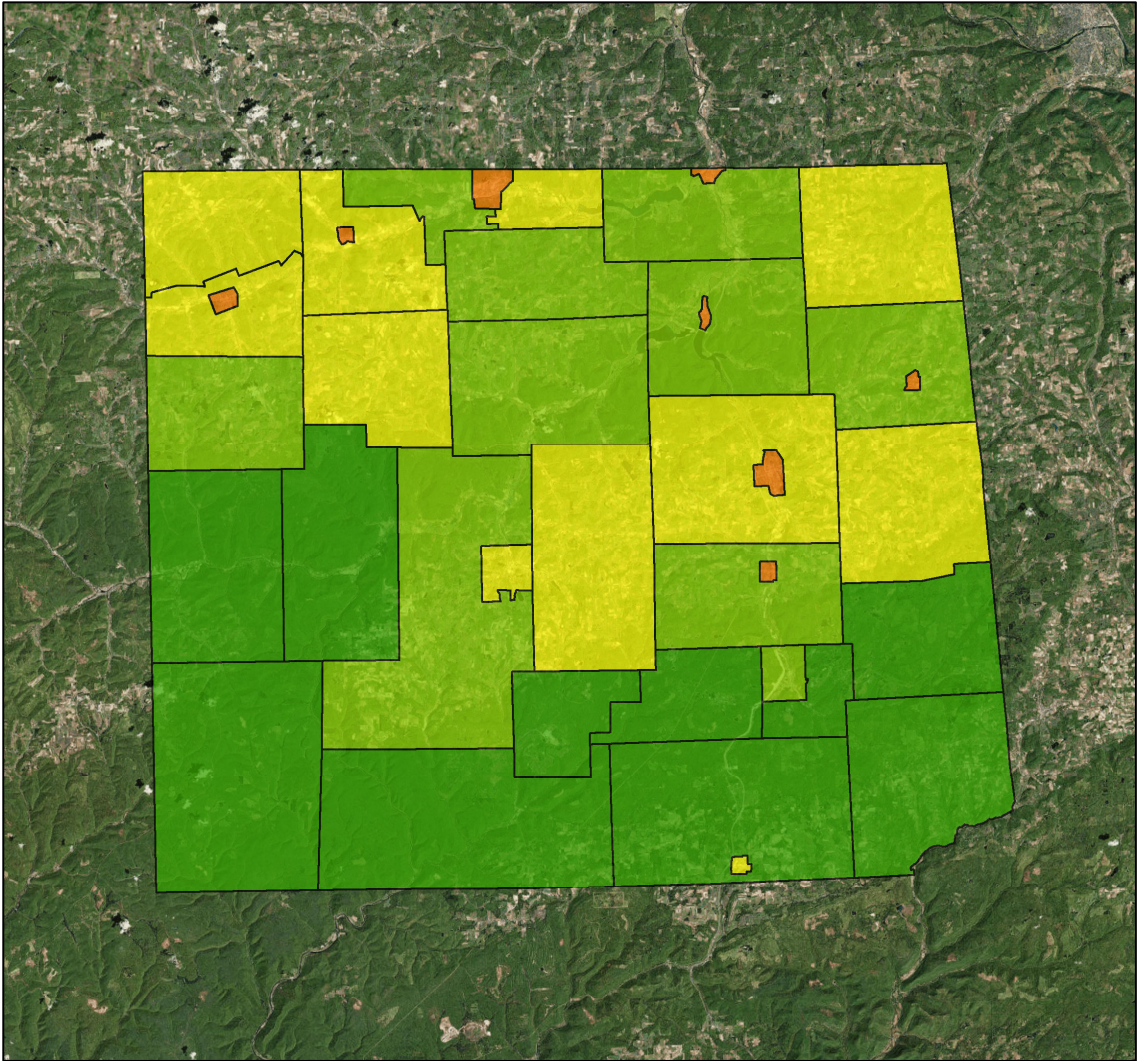
Totals by Municipalities



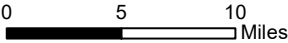
Tioga County does not contain any MS4 Municipalities.

Averages for MS4 and Non-MS4 Municipalities

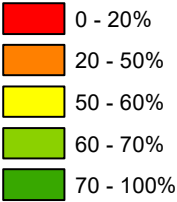
	Non-MS4	MS4
Conservation Opportunity Areas (Acres)	388	0
Restoration Opportunity Areas (Acres)	158	0
Developed Areas (Acres)	14	0
Total Buffer Acres	561	0
Percent Forest Buffer Coverage (%)	60.93	0.00



Tioga County Municipalities



35' Buffer Coverage (%)



Municipality	MS4	Total 35 ft buffer acres	Conservation opportunity areas (acres)	Restoration opportunity areas (acres)	Developed areas (acres)	Percent forest buffer coverage (%)
BLOSS	0	557	424	108	25	76.08
BLOSSBURG	0	132	80	31	21	60.85
BROOKFIELD	0	564	337	214	13	59.77
CHARLESTON	0	1,026	591	404	31	57.60
CHATHAM	0	637	378	245	15	59.26
CLYMER	0	588	393	181	14	66.83
COVINGTON	0	709	447	240	21	63.09
DEERFIELD	0	590	329	254	7	55.75
DELMAR	0	1,655	1,068	542	44	64.56
DUNCAN	0	373	314	57	2	84.22
ELK	0	1,190	1,081	92	17	90.87
ELKLAND	0	88	19	63	6	22.14
FARMINGTON	0	545	365	171	9	66.98
GAINES	0	889	750	124	14	84.41
HAMILTON	0	248	209	33	7	83.92
JACKSON	0	799	454	322	23	56.79
KNOXVILLE	0	10	4	5	1	40.75
LAWRENCE	0	725	443	256	26	61.09
LAWRENCEVILLE	0	19	6	11	1	32.56
LIBERTY	0	1,165	899	244	22	77.16
LIBERTY	0	13	7	4	2	50.69
MANSFIELD	0	59	20	24	16	33.37
MIDDLEBURY	0	964	618	320	26	64.08
MORRIS	0	1,359	1,195	154	11	87.88
NELSON	0	272	157	111	4	57.52
OSCEOLA	0	255	155	95	5	60.94
PUTNAM	0	35	15	17	3	44.26
RICHMOND	0	1,035	611	379	45	59.05
ROSEVILLE	0	20	9	10	1	46.76
RUTLAND	0	669	424	235	10	63.31
SHIPPEN	0	835	694	125	16	83.16
SULLIVAN	0	852	477	360	15	55.97
TIOGA	0	799	555	222	22	69.45
TIOGA	0	26	5	20	1	20.07
UNION	0	845	688	140	17	81.44

(continued)

Municipality	MS4	Total 35 ft buffer acres	Conservation opportunity areas (acres)	Restoration opportunity areas (acres)	Developed areas (acres)	Percent forest buffer coverage (%)
WARD	0	649	537	104	8	82.84
WELLSBORO	0	120	66	34	19	55.29
WESTFIELD	0	513	297	201	14	57.90
WESTFIELD	0	35	13	18	3	37.65
*						

Non-MS4 Regulated Municipalities

