

Union County Forest Buffer Summary

35 ft. Width

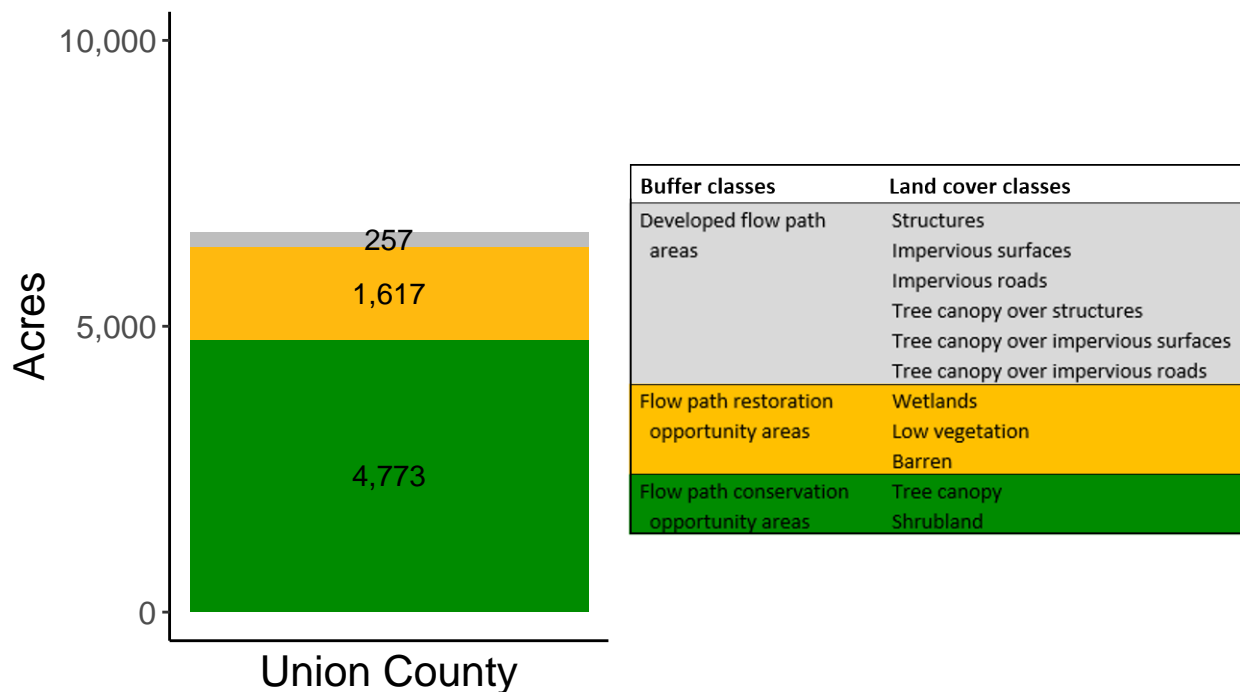
Created by: Chesapeake Conservancy, February 2019

Data Description

The buffer analysis is based on two Geospatial Information Systems (GIS) datasets created by Chesapeake Conservancy and partners. The enhanced flow path water network dataset was derived from 2006 & 2008 PAMAP Statewide digital elevation models (DEMs), developed from Lidar data. Channel heads were assigned where upslope drainage accumulation reached 60 acres. Flow paths were widened based on US Geological Survey regional curves and enhanced with high-resolution land cover. The high-resolution land cover dataset was derived from 2013 National Agriculture Inventory Program imagery. Both datasets have a spatial resolution of 1 meter. Pixels from the high-resolution land cover dataset within 35 ft. and 100 ft. distances of the enhanced flow path water network were considered in the buffer analysis. For more information and to download datasets, go to www.ChesapeakeConservancy.org and search for “data downloader.”

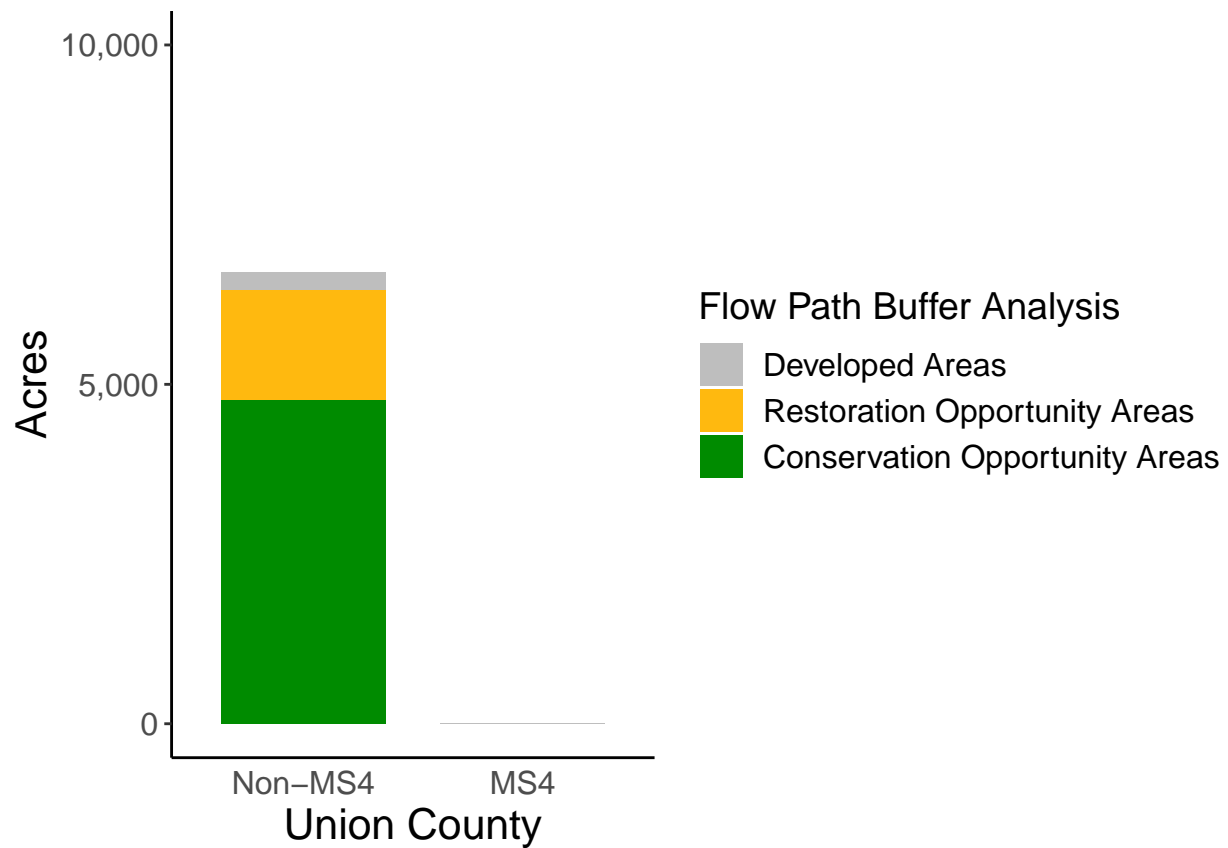
County Summary

Union County contains a total of 1,617 acres of flow path restoration opportunity area, and has 71.8% forest buffer coverage. Union County has complete buffer data coverage.



Municipal Separate Storm Sewer System (MS4) Regulated Municipality Summary

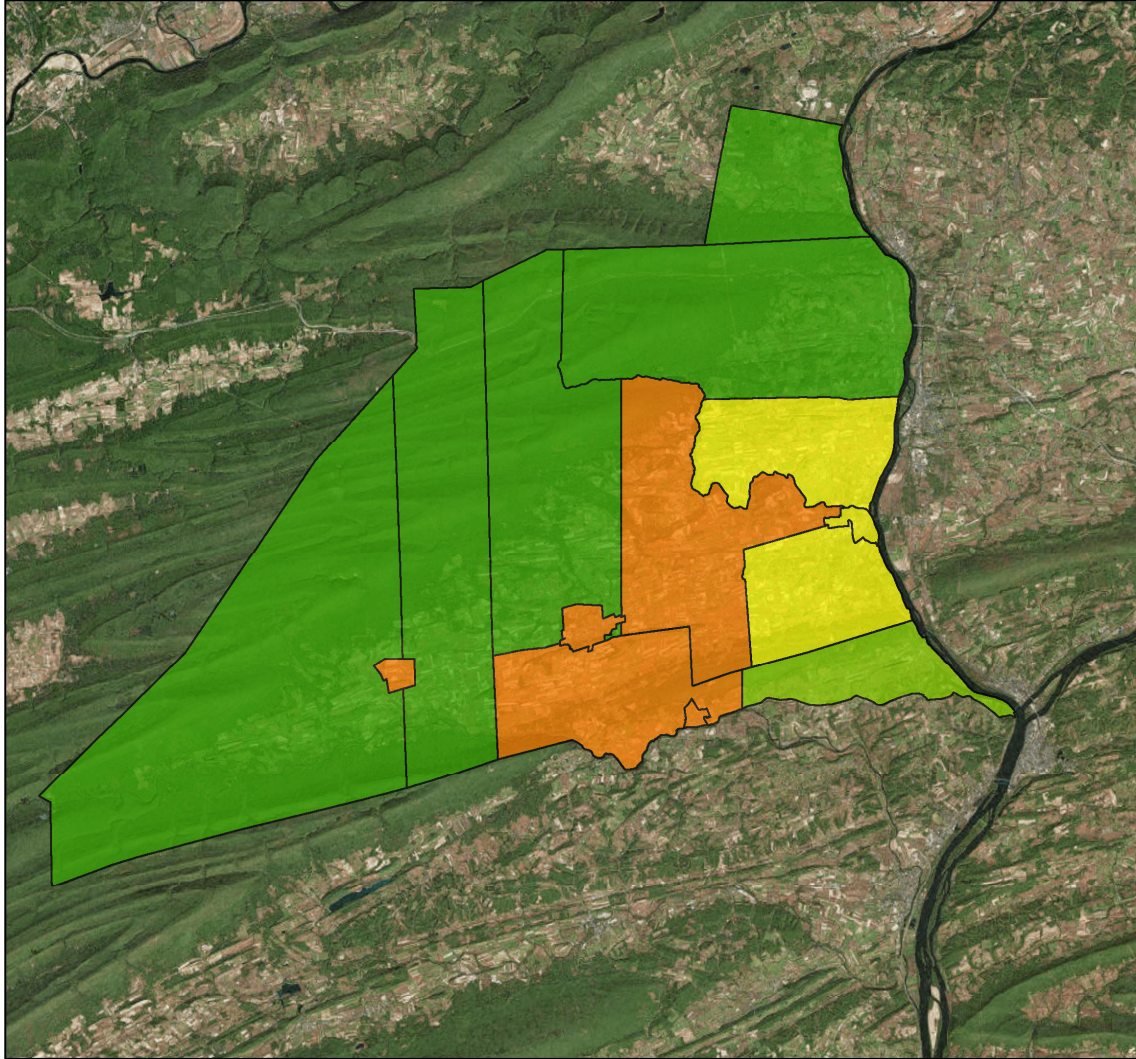
Totals by Municipalities



Union County does not contain any MS4 Municipalities.

Averages for MS4 and Non-MS4 Municipalities

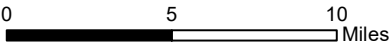
	Non-MS4	MS4
Conservation Opportunity Areas (Acres)	341	0
Restoration Opportunity Areas (Acres)	116	0
Developed Areas (Acres)	18	0
Total Buffer Acres	475	0
Percent Forest Buffer Coverage (%)	59.58	0.00



Union County Municipalities

35' Buffer Coverage (%)

- 0 - 20%
- 20 - 50%
- 50 - 60%
- 60 - 70%
- 70 - 100%



Municipality	MS4	Total 35 ft buffer acres	Conservation opportunity areas (acres)	Restoration opportunity areas (acres)	Developed areas (acres)	Percent forest buffer coverage (%)
BUFFALO	0	659	329	311	19	49.92
EAST BUFFALO	0	326	170	128	27	52.27
GREGG	0	360	253	98	8	70.35
HARTLETON	0	22	5	15	2	22.03
HARTLEY	0	1,595	1,429	136	29	89.60
KELLY	0	411	207	182	22	50.35
LEWIS	0	762	617	123	22	81.04
LEWISBURG	0	27	16	6	5	59.37
LIMESTONE	0	418	191	211	16	45.60
MIFFLINBURG	0	52	25	18	9	47.97
NEW BERLIN	0	15	6	5	3	41.65
UNION	0	229	159	60	9	69.67
WEST BUFFALO	0	835	668	138	29	79.96
WHITE DEER	0	937	698	184	56	74.42

Non-MS4 Regulated Municipalities

