

# Wayne County Forest Buffer Summary

## 35 ft. Width

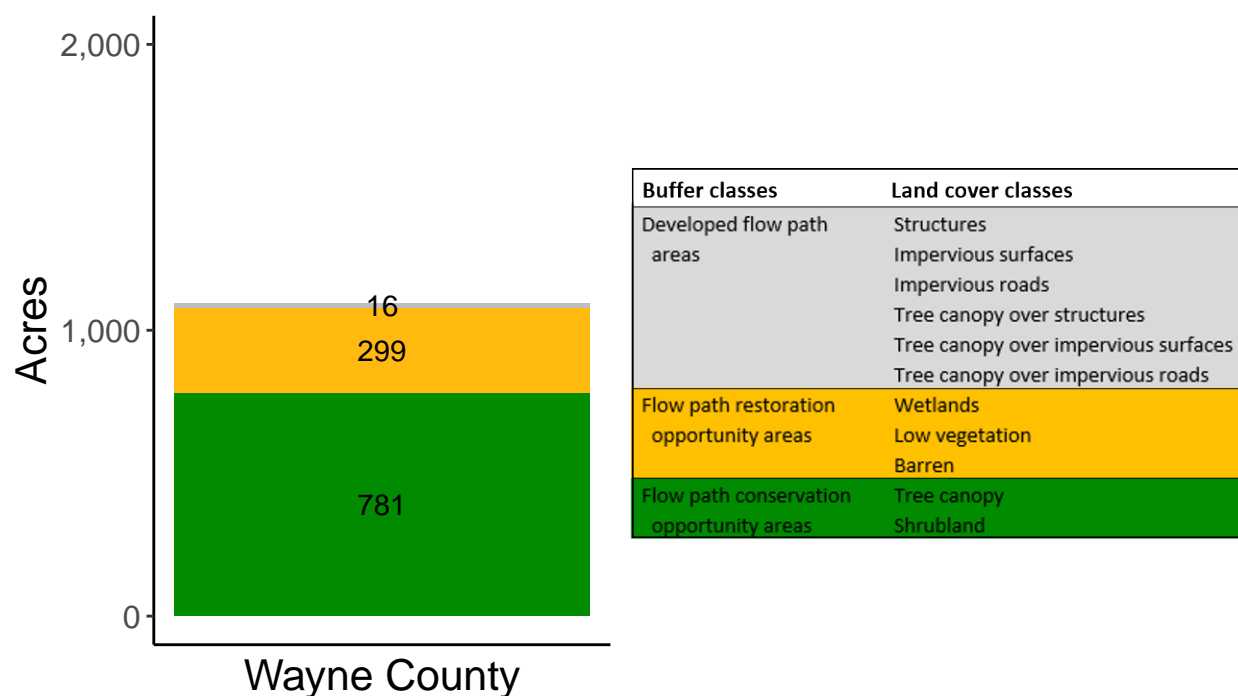
*Created by: Chesapeake Conservancy, February 2019*

### Data Description

The buffer analysis is based on two Geospatial Information Systems (GIS) datasets created by Chesapeake Conservancy and partners. The enhanced flow path water network dataset was derived from 2006 & 2008 PAMAP Statewide digital elevation models (DEMs), developed from Lidar data. Channel heads were assigned where upslope drainage accumulation reached 60 acres. Flow paths were widened based on US Geological Survey regional curves and enhanced with high-resolution land cover. The high-resolution land cover dataset was derived from 2013 National Agriculture Inventory Program imagery. Both datasets have a spatial resolution of 1 meter. Pixels from the high-resolution land cover dataset within 35 ft. and 100 ft. distances of the enhanced flow path water network were considered in the buffer analysis. For more information and to download datasets, go to [www.ChesapeakeConservancy.org](http://www.ChesapeakeConservancy.org) and search for “data downloader.”

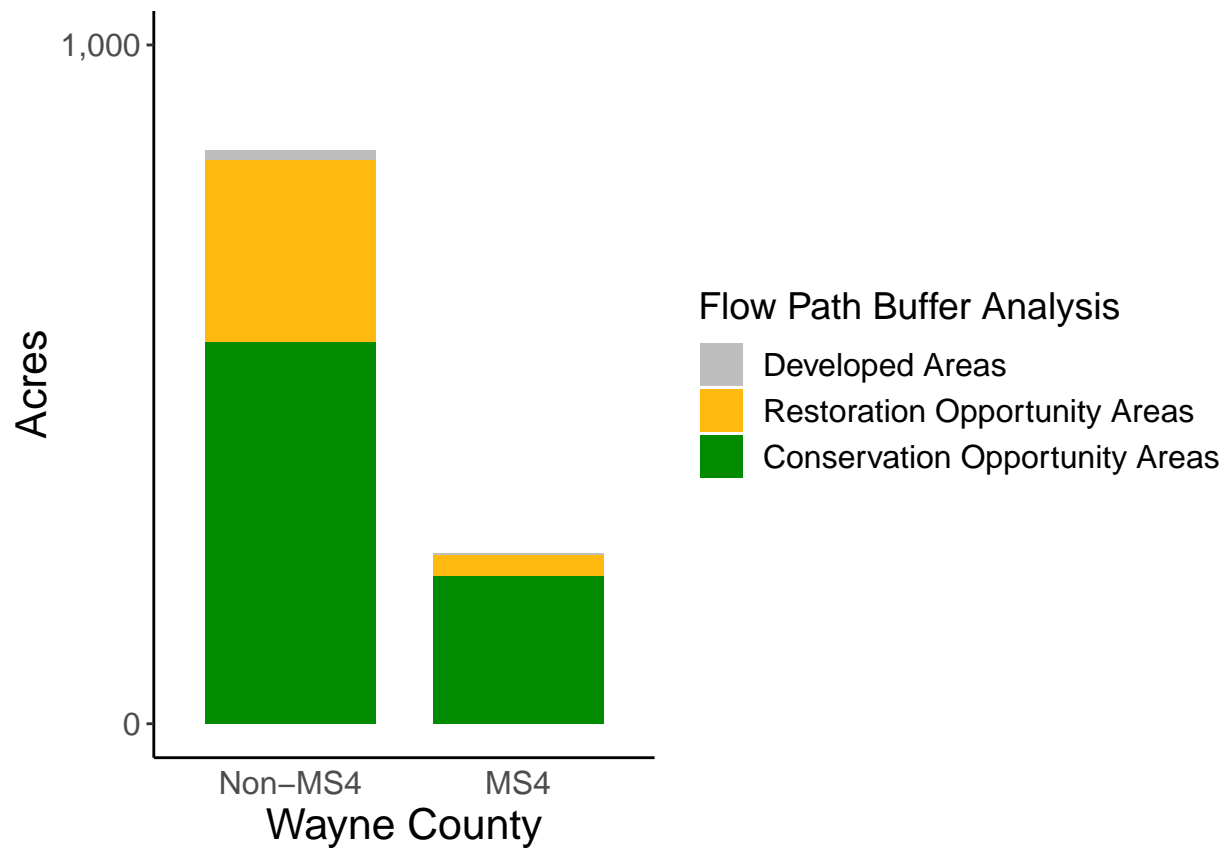
### County Summary

Wayne County contains a total of 299 acres of flow path restoration opportunity area, and has 71.27% forest buffer coverage. Wayne County has incomplete buffer data coverage.



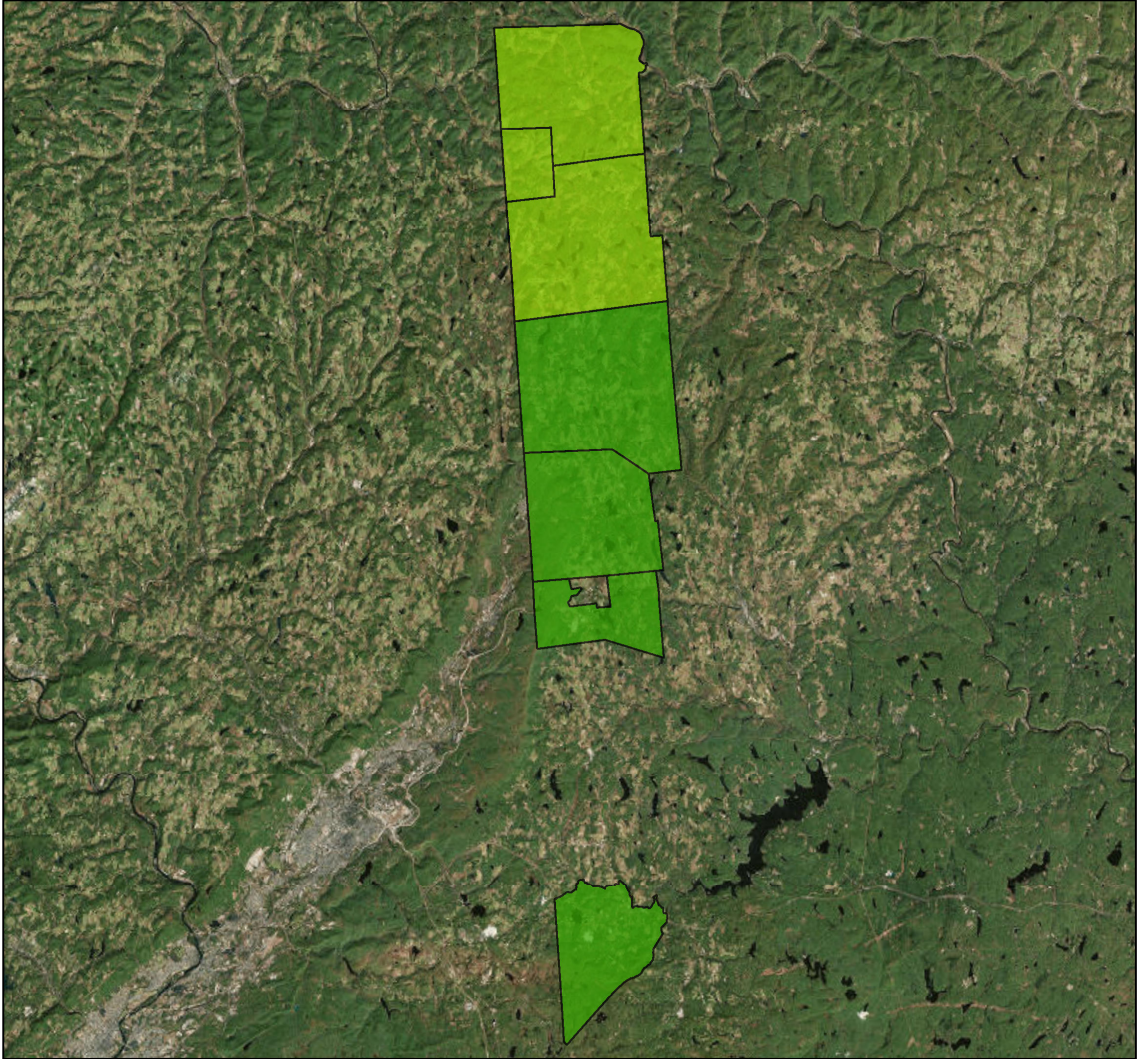
# Municipal Separate Storm Sewer System (MS4) Regulated Municipality Summary

## Totals by Municipalities



## Averages for MS4 and Non-MS4 Municipalities

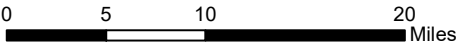
	Non-MS4	MS4
Conservation Opportunity Areas (Acres)	112	109
Restoration Opportunity Areas (Acres)	54	15
Developed Areas (Acres)	3	1
Total Buffer Acres	169	126
Percent Forest Buffer Coverage (%)	70.35	85.91



**Wayne County Municipalities**

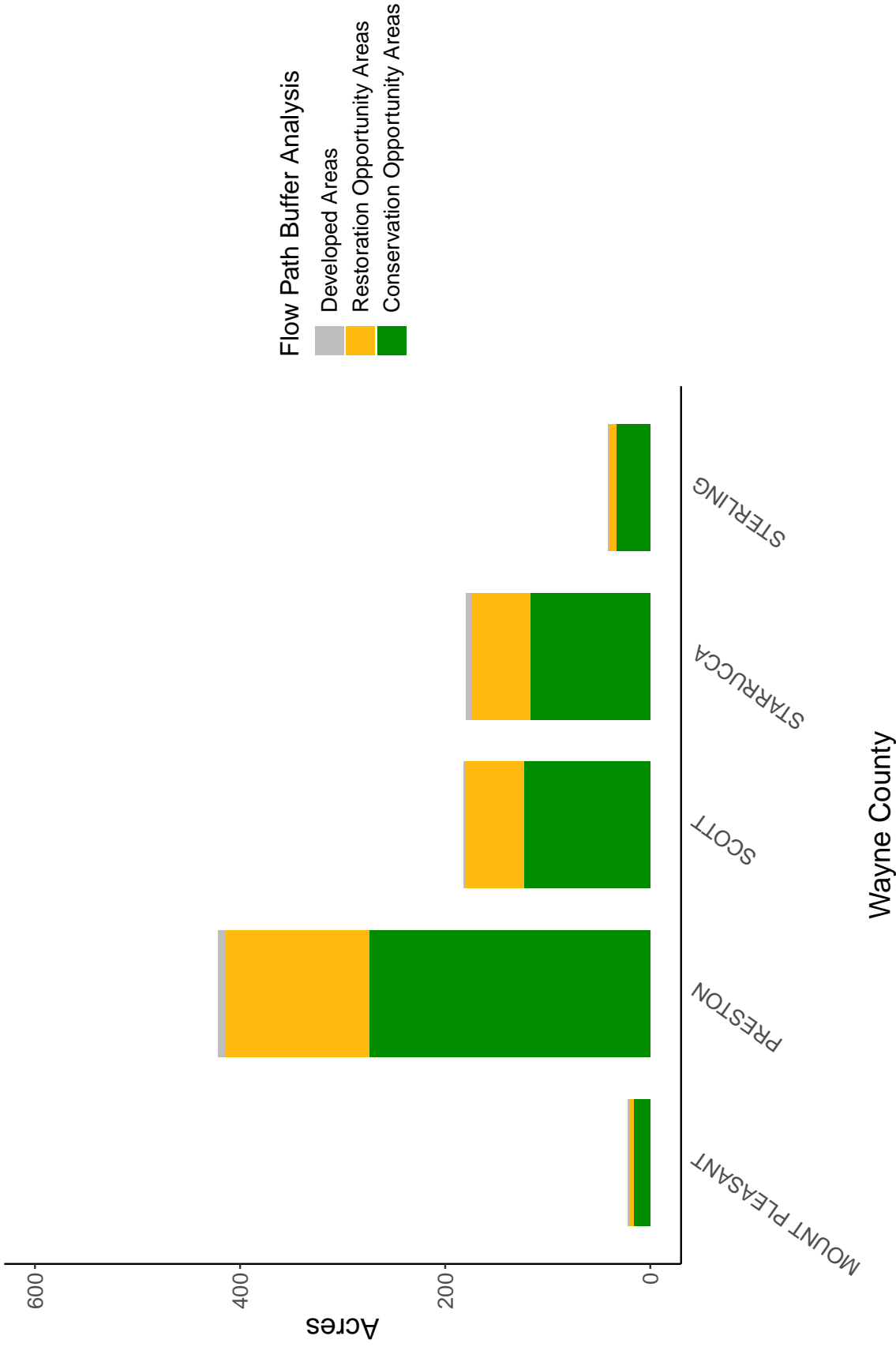
**35' Buffer Coverage (%)**

- 0 - 20%
- 20 - 50%
- 50 - 60%
- 60 - 70%
- 70 - 100%



Municipality	MS4	Total 35 ft buffer acres	Conservation opportunity areas (acres)	Restoration opportunity areas (acres)	Developed areas (acres)	Percent forest buffer coverage (%)
MOUNT PLEASANT	0	21	16	5	1	73.61
PRESTON	0	420	274	140	7	65.13
SCOTT	0	182	123	58	1	67.28
STARRUCCA	0	180	117	58	5	65.30
STERLING	0	41	33	8	0	80.45
CANAAN	1	39	33	5	1	84.30
CLINTON	1	212	186	25	2	87.52

Non-MS4 Regulated Municipalities



MS4 Regulated Municipalities

