

# Wyoming County Forest Buffer Summary

## 35 ft. Width

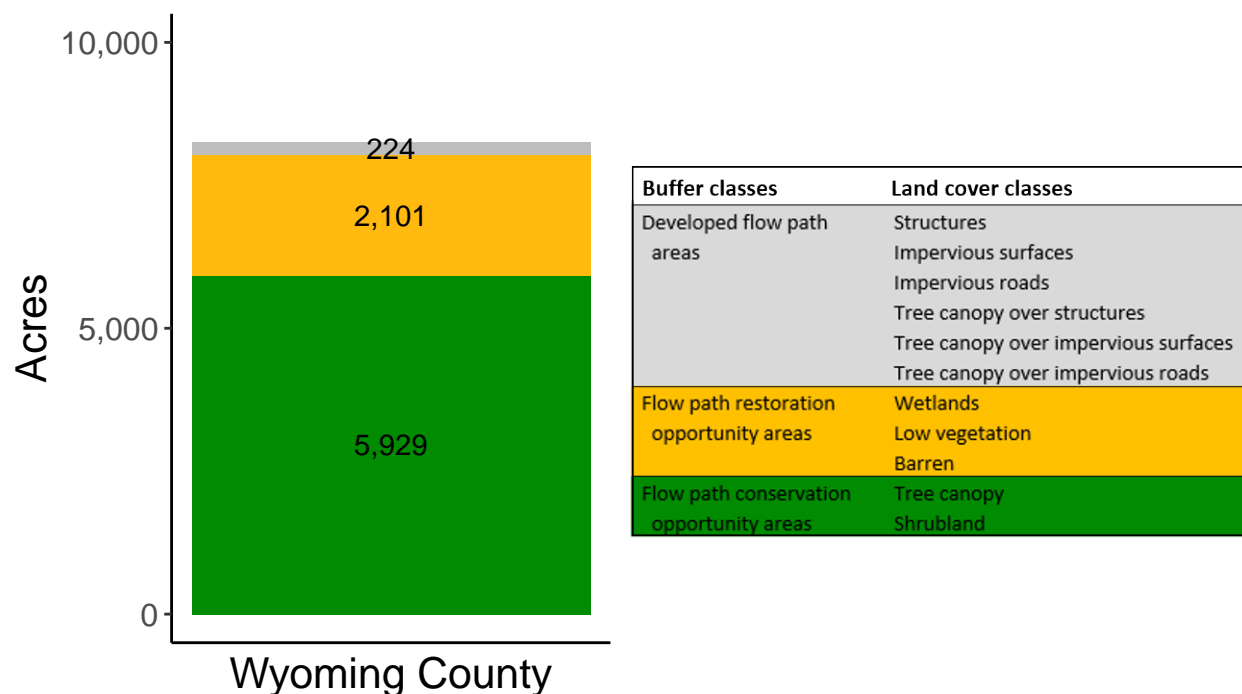
*Created by: Chesapeake Conservancy, February 2019*

### Data Description

The buffer analysis is based on two Geospatial Information Systems (GIS) datasets created by Chesapeake Conservancy and partners. The enhanced flow path water network dataset was derived from 2006 & 2008 PAMAP Statewide digital elevation models (DEMs), developed from Lidar data. Channel heads were assigned where upslope drainage accumulation reached 60 acres. Flow paths were widened based on US Geological Survey regional curves and enhanced with high-resolution land cover. The high-resolution land cover dataset was derived from 2013 National Agriculture Inventory Program imagery. Both datasets have a spatial resolution of 1 meter. Pixels from the high-resolution land cover dataset within 35 ft. and 100 ft. distances of the enhanced flow path water network were considered in the buffer analysis. For more information and to download datasets, go to [www.ChesapeakeConservancy.org](http://www.ChesapeakeConservancy.org) and search for “data downloader.”

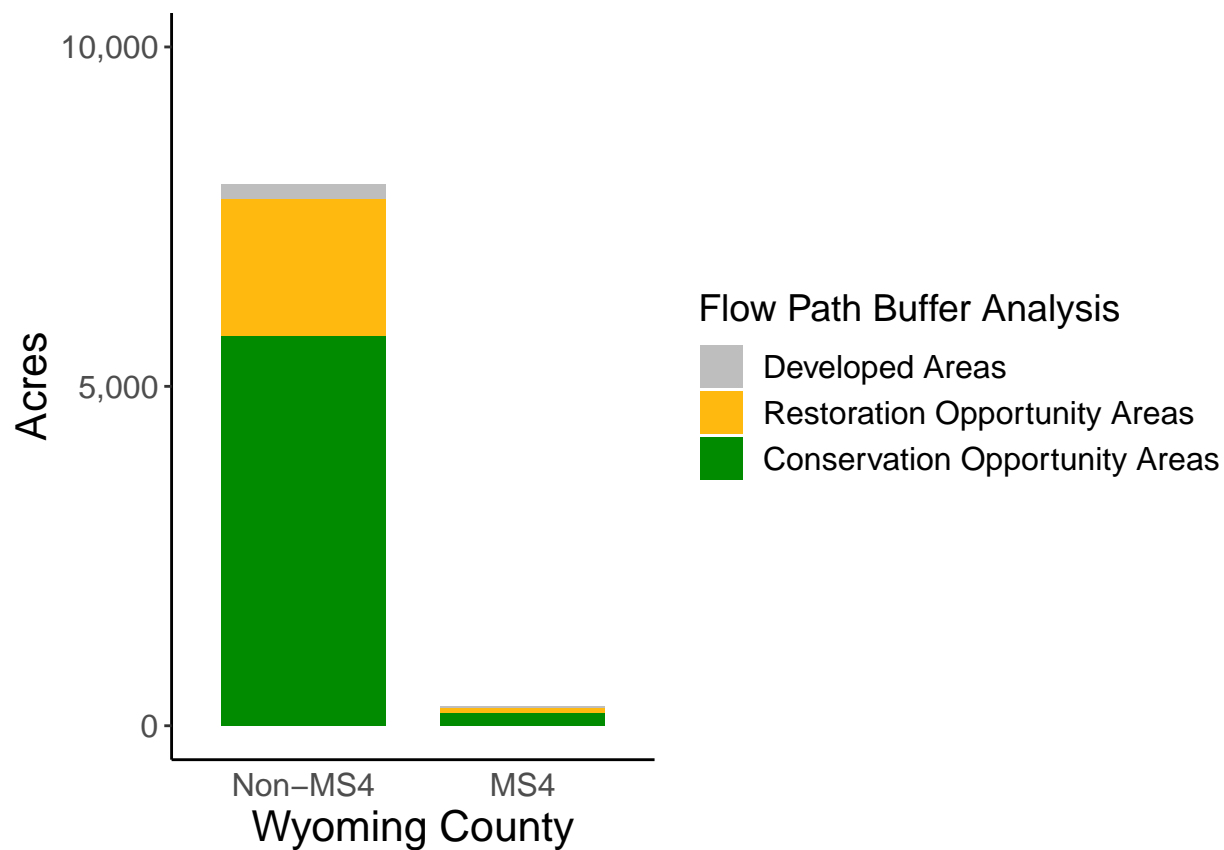
### County Summary

Wyoming County contains a total of 2,101 acres of flow path restoration opportunity area, and has 71.83% forest buffer coverage. Wyoming County has complete buffer data coverage.



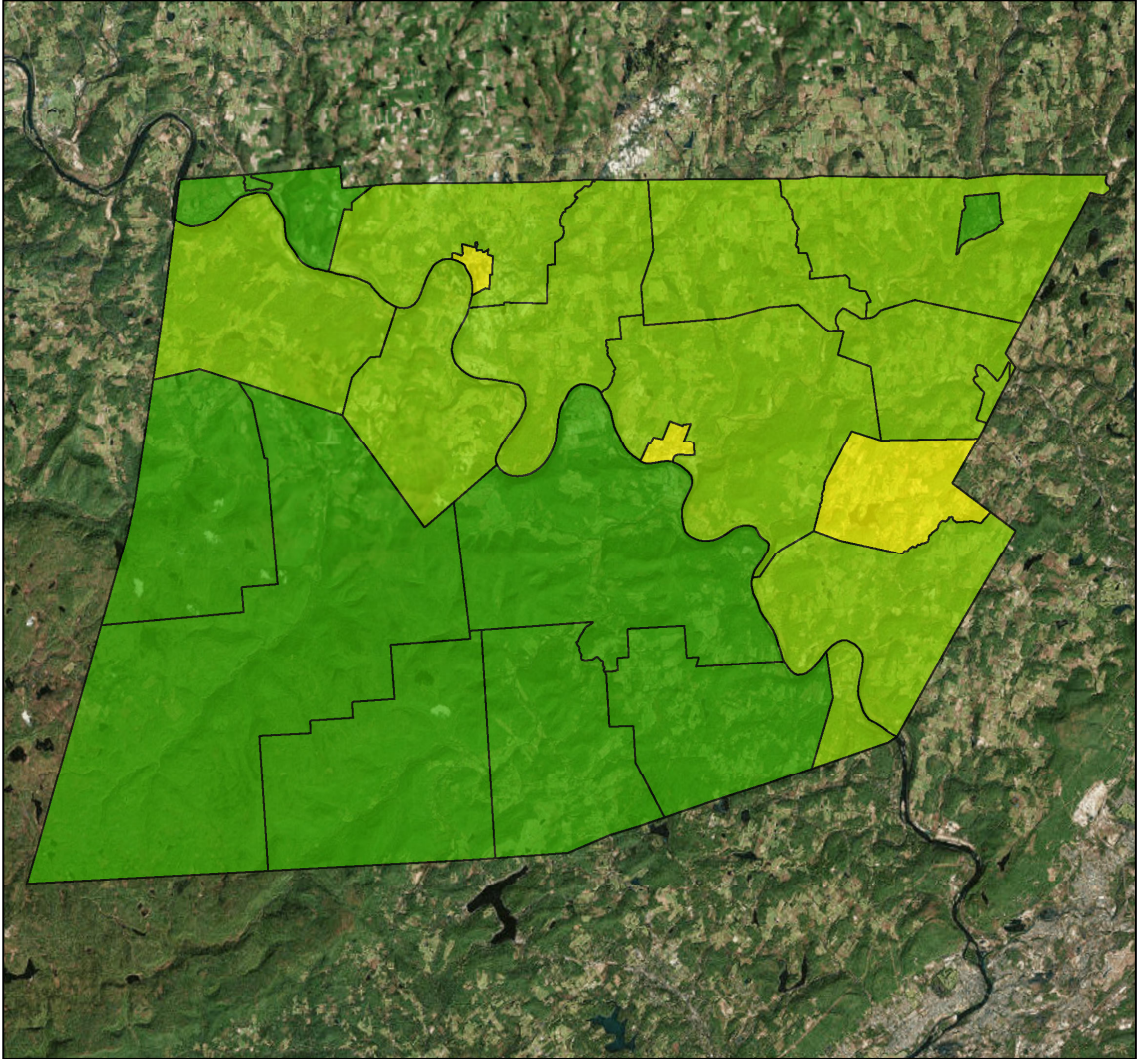
## Municipal Separate Storm Sewer System (MS4) Regulated Municipality Summary

### Totals by Municipalities

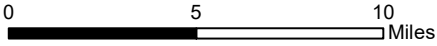


### Averages for MS4 and Non-MS4 Municipalities

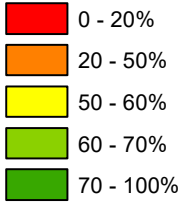
	Non-MS4	MS4
Conservation Opportunity Areas (Acres)	273	96
Restoration Opportunity Areas (Acres)	97	37
Developed Areas (Acres)	10	8
Total Buffer Acres	380	141
Percent Forest Buffer Coverage (%)	68.95	67.02



**Wyoming County Municipalities**

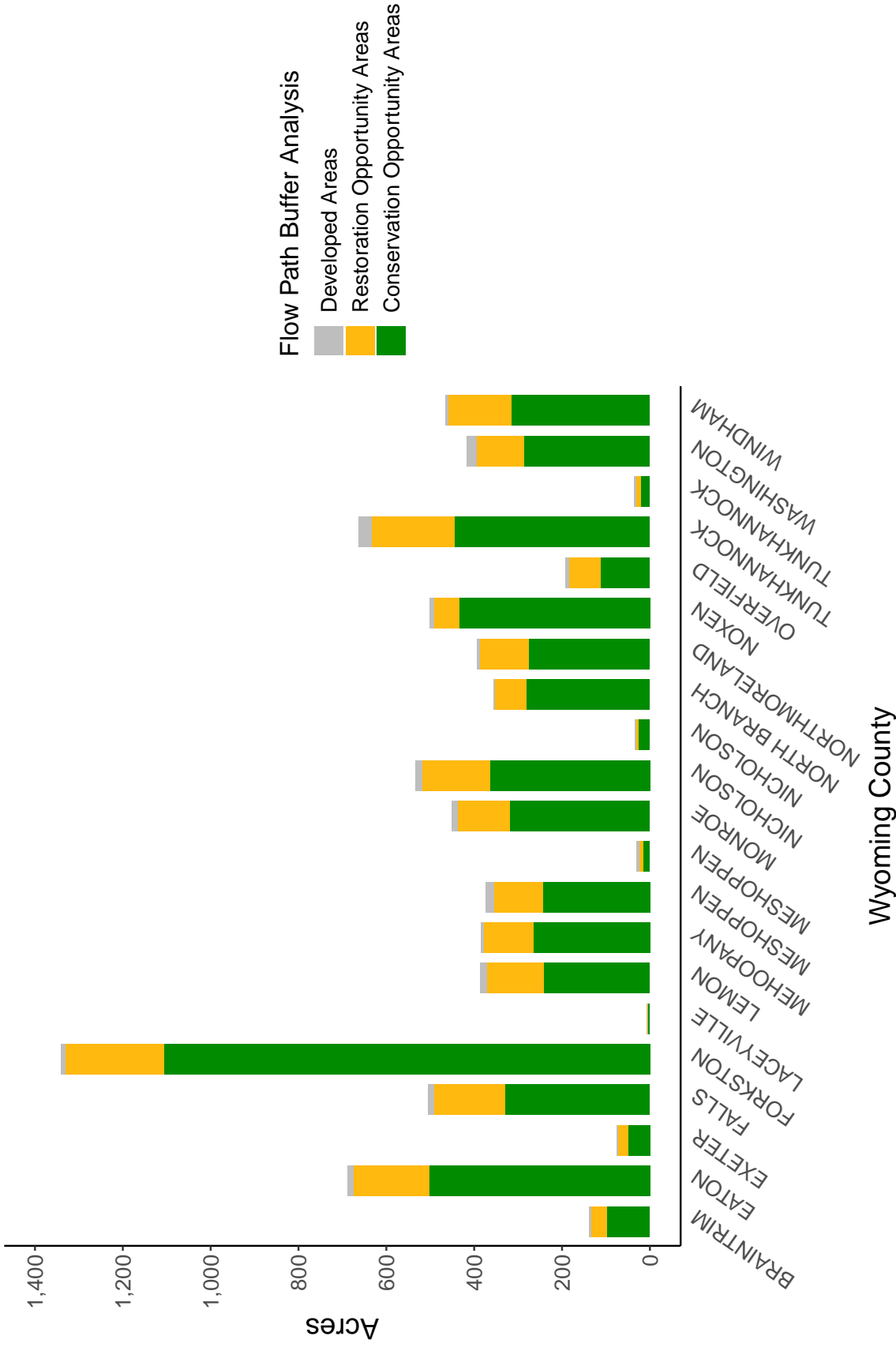


**35' Buffer Coverage (%)**



Municipality	MS4	Total 35 ft buffer acres	Conservation opportunity areas (acres)	Restoration opportunity areas (acres)	Developed areas (acres)	Percent forest buffer coverage (%)
BRAINTRIM	0	139	98	36	5	70.58
EATON	0	687	502	172	14	73.00
EXETER	0	76	49	23	3	65.15
FALLS	0	504	330	161	14	65.39
FORKSTON	0	1,342	1,106	226	9	82.44
LACEYVILLE	0	7	5	1	1	75.40
LEMON	0	386	242	129	15	62.74
MEHOOPANY	0	385	265	114	6	68.74
MESHOPPEN	0	373	243	112	18	65.13
MESHOPPEN	0	30	16	8	6	52.28
MONROE	0	452	318	120	13	70.45
NICHOLSON	0	534	365	153	16	68.39
NICHOLSON	0	34	25	7	2	73.27
NORTH BRANCH	0	355	282	71	2	79.37
NORTHMORELAND	0	393	276	112	6	70.04
NOXEN	0	501	434	58	9	86.71
OVERFIELD	0	193	113	71	8	58.72
TUNKHANNOCK	0	663	445	188	29	67.13
TUNKHANNOCK	0	37	21	11	5	56.57
WASHINGTON	0	418	287	108	23	68.58
WINDHAM	0	465	316	144	6	67.88
CLINTON	1	265	182	71	12	68.53
FACTORYVILLE	1	16	11	2	3	65.52

Non-MS4 Regulated Municipalities



MS4 Regulated Municipalities

