

# Tree Cover Status & Change

FOR GREENE COUNTY, VA

**72.1%**

**Total Percent** of  
County with Tree Cover

**\$17.1 Million**

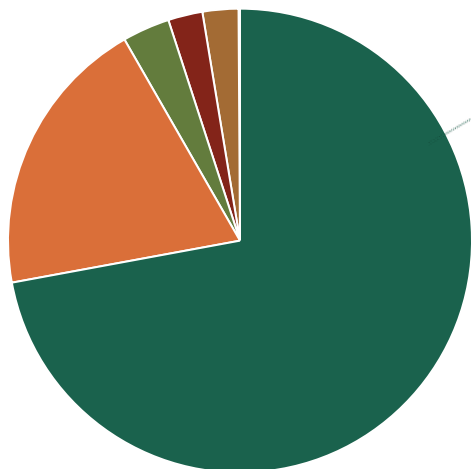
**Annual Benefits** provided by Tree Cover  
(in reduced air pollution, stormwater, & carbon dioxide)

**-111 Acres**

**Net Loss** of Tree Cover on  
Developed Lands, 2014 to 2018

## What is the land use/land cover breakdown in your county?

99,789 ACRES OF LAND AREA  
IN GREENE COUNTY



## Where does tree cover occur in your county?



**92.4%**

is in forest  
(66,449 acres)



**0.7%**

is over impervious  
(511 acres)



**4.6%**

is over turf grass  
(3,289 acres)



**2.4%**

is other tree cover  
(1,698 acres)

## What are some benefits of tree cover in your county?



### Total Air Pollution Removal Value

**4.8 Million lbs** removed annually  
**\$647,000** saved annually

Total air pollution removal includes CO, NO<sub>2</sub>, O<sub>3</sub>, SO<sub>2</sub>, and Particulate Matter (PM2.5, PM10).



### Gallons of Reduced Stormwater Runoff Value

**45.1 million gallons** reduced annually  
**\$402,900** saved annually



### Carbon Sequestered Value

**86,000 tons** removed annually  
**\$16.0 million** saved annually

Calculated based on 2018 tree cover data using:  
[landscape.itreetools.org](https://landscape.itreetools.org)

**72.1%** **Tree Cover<sup>1</sup>**  
71,947 acres

**19.6%** **Agriculture**  
19,558 acres

**3.3%** **Turf Grass**  
(Lawns)  
3,306 acres

**2.4%** **Impervious**  
(Buildings/Pavement)  
2,442 acres

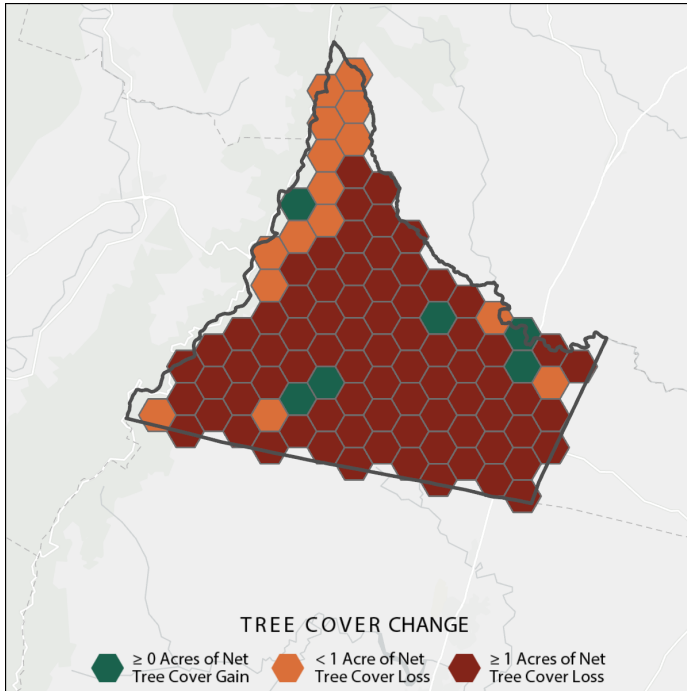
**2.5%** **Other<sup>2</sup>**  
2,471 acres

**0.1%** **Non-Forested Wetlands**  
65 acres

1. Tree cover includes all trees occurring on all land uses, such as individual trees found over turf, impervious, agricultural, wetlands, or other lands. It also includes areas of "forest," defined in this dataset as patches of tree cover 1 acre or greater, with a minimum patch width of 240 feet.
2. Other includes a mixture of non-treed land uses not captured in the main pie chart categories. See the [Data Guide](#) for detailed definitions of "other" and all the land use categories.

Land use/land cover statistics were generated based on 2018 imagery using the 2022 edition of the [Chesapeake Bay Land Use and Land Cover Database](#).

# How is tree cover changing on developed and developing lands?



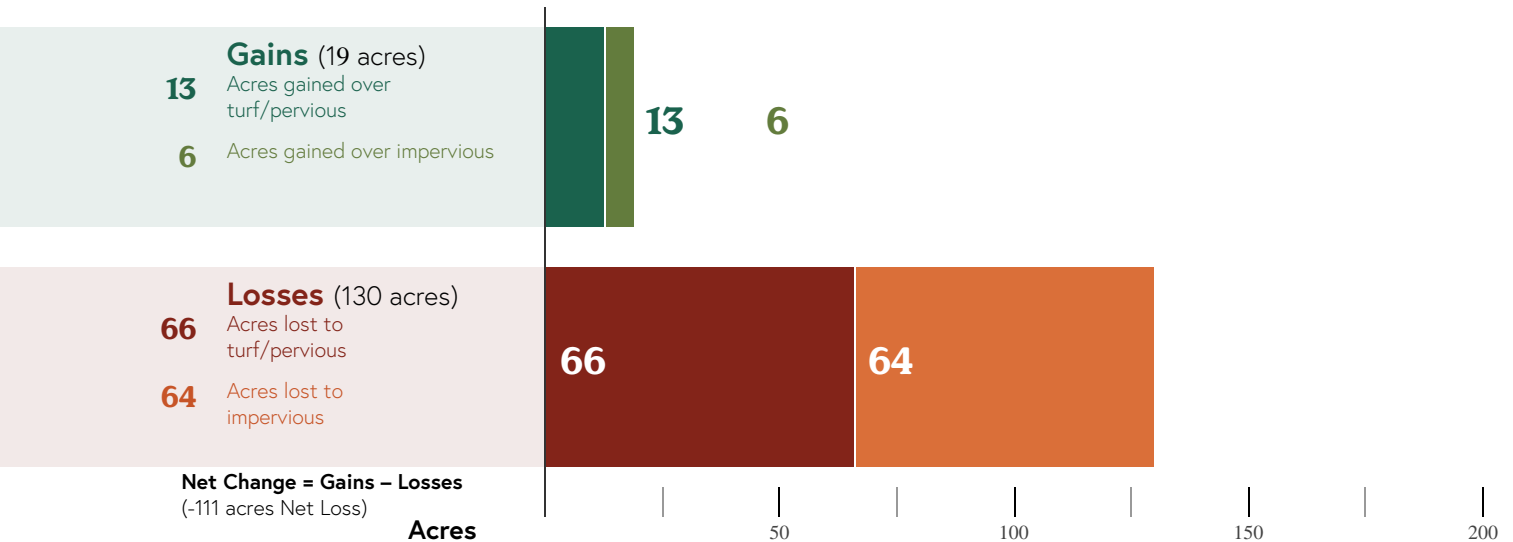
Understanding how your tree cover changes over time can inform the sustainable management of forests and community trees. The map to the left shows where your county has lost and gained tree cover from 2014 to 2018, focusing on land that is already or newly developed.

Tree cover can be lost quickly due to human activities (e.g., construction) or natural events (e.g., severe weather).

Tree cover can be gradually increased through tree planting and natural regrowth, but these gains may take 10-15 years to be detected in high resolution imagery.

Since mature, healthy trees provide significantly greater community benefits than newly planted trees, it is important to both preserve existing tree cover and seek opportunities to grow new trees and forests. Local land use planning, ordinances, and tree programs play a critical role!

## Tree Cover Change on developed/developing lands (2014–2018)



### Learn More:

#### [Chesapeake Tree Canopy Network](#)

Links to county fact sheets, user guides, map viewers, datasets, and more

#### [Tree Equity Score](#)

Explore maps of how tree benefits are distributed across communities

#### [Capitalizing on the Benefits of Trees](#)

A slideshow for local leaders featuring tree benefits, case studies and resources

#### [State Urban and Community Forestry Assistance](#)

([Lara Johnson, Virginia Website](#))



Fact sheets produced through a grant from the **USDA Forest Service**. USDA is an equal opportunity provider, employer and lender.